

12-2005

## Watched

Collin Asmus

*Bridgewater State College*, [casmus@bridgew.edu](mailto:casmus@bridgew.edu)

Follow this and additional works at: [https://vc.bridgew.edu/br\\_rev](https://vc.bridgew.edu/br_rev)



Part of the [Art and Design Commons](#), and the [Art Practice Commons](#)

---

### Recommended Citation

Asmus, Collin (2005). Watched. *Bridgewater Review*, 24(2), 14-18.

Available at: [https://vc.bridgew.edu/br\\_rev/vol24/iss2/7](https://vc.bridgew.edu/br_rev/vol24/iss2/7)

This item is available as part of Virtual Commons, the open-access institutional repository of Bridgewater State University, Bridgewater, Massachusetts.

# Watched

by Collin Asmus



M

y work involves images taken from public web cameras around the world. In some cases, the people in my paintings have no idea

they are being observed by others via the Internet, let alone that they are having their image painted and preserved.

My images function on a variety of levels: to raise questions regarding privacy and how modern technology is affecting our lives, and to reflect contemporary technology's influence on traditional subject matter such as portraiture and genre scenes.

*Café Einstein: Vienna, Austria I* (facing page) and *Café Einstein: Vienna, Austria II* (pages 16, 17) depict the same place, but at different times. My plan is to visit this café every year or so and make paintings based on the images I capture from their web cameras. It will be interesting to see this particular place change over time and to follow inevitable advances to web cam technology.

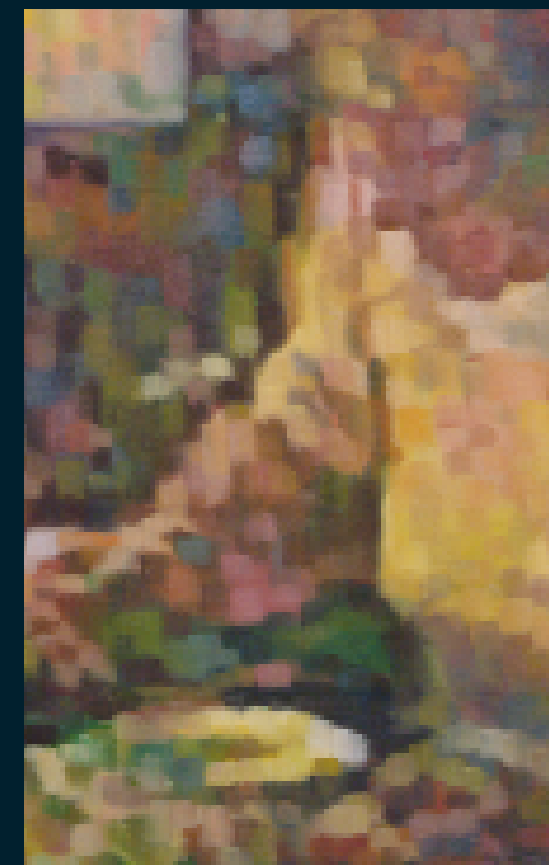
Some of my web cam paintings are portraits executed from live Internet chatroom broadcasts. In the painting on page 18, I include information the 'sitter' writes exactly as it appears on screen because of what it communicates about the subject's sense of self.

*Café Einstein: Vienna, Austria I.* Oil on linen, 18" x 24"

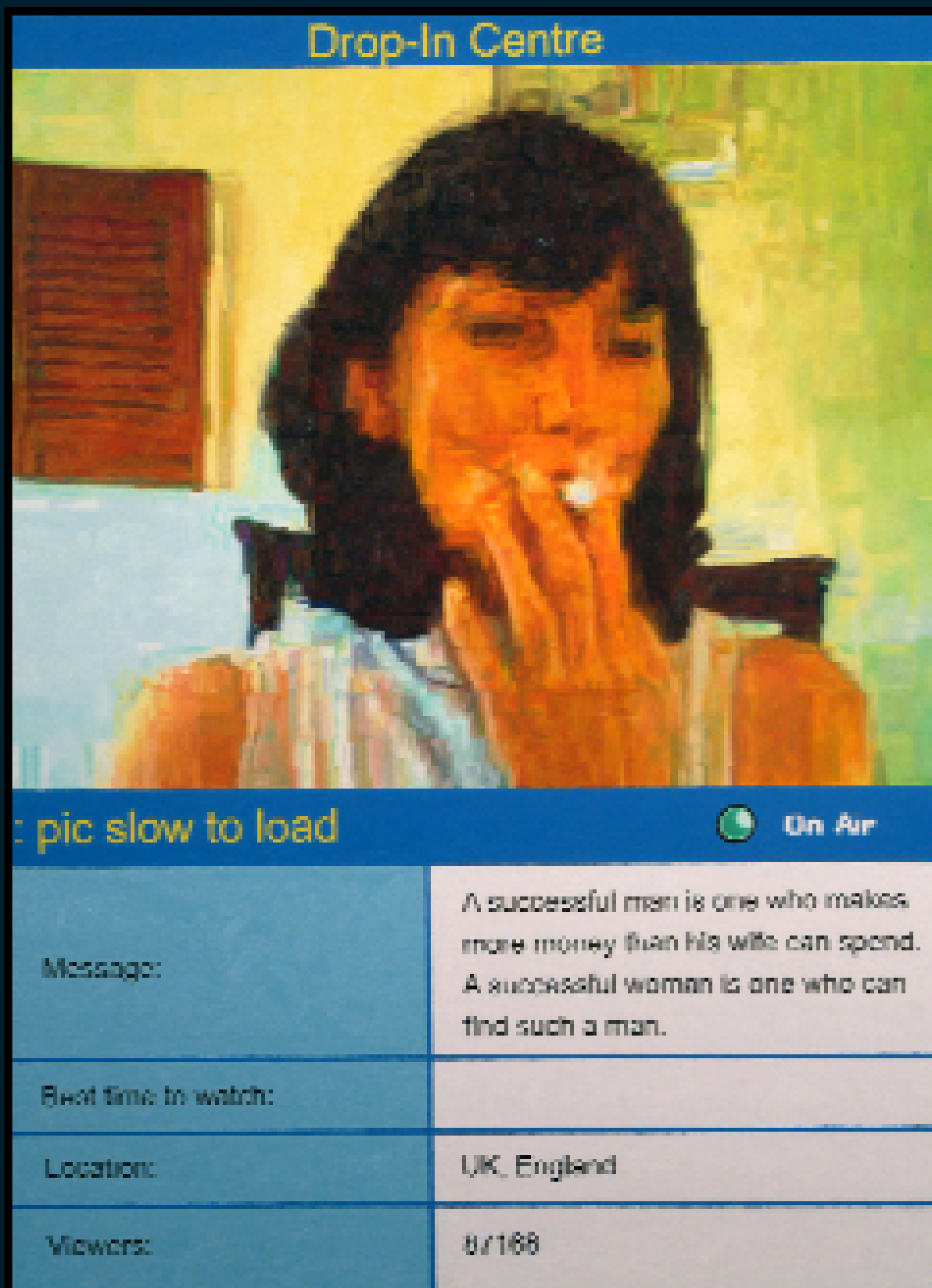




*Café Einstein: Vienna, Austria II.* Oil on linen, 48" x 60"



*Café Einstein: Vienna, Austria II.*  
(Detail)



*Drop-in Centre. Oil on linen, 32" x 24"*