



Bridgewater State University

Virtual Commons - Bridgewater State University

Watershed Access Lab Projects

Watershed Access Lab

4-30-2009

Runnins River

Follow this and additional works at: https://vc.bridgew.edu/wal_projects



Part of the [Environmental Monitoring Commons](#), and the [Natural Resources and Conservation Commons](#)

Recommended Citation

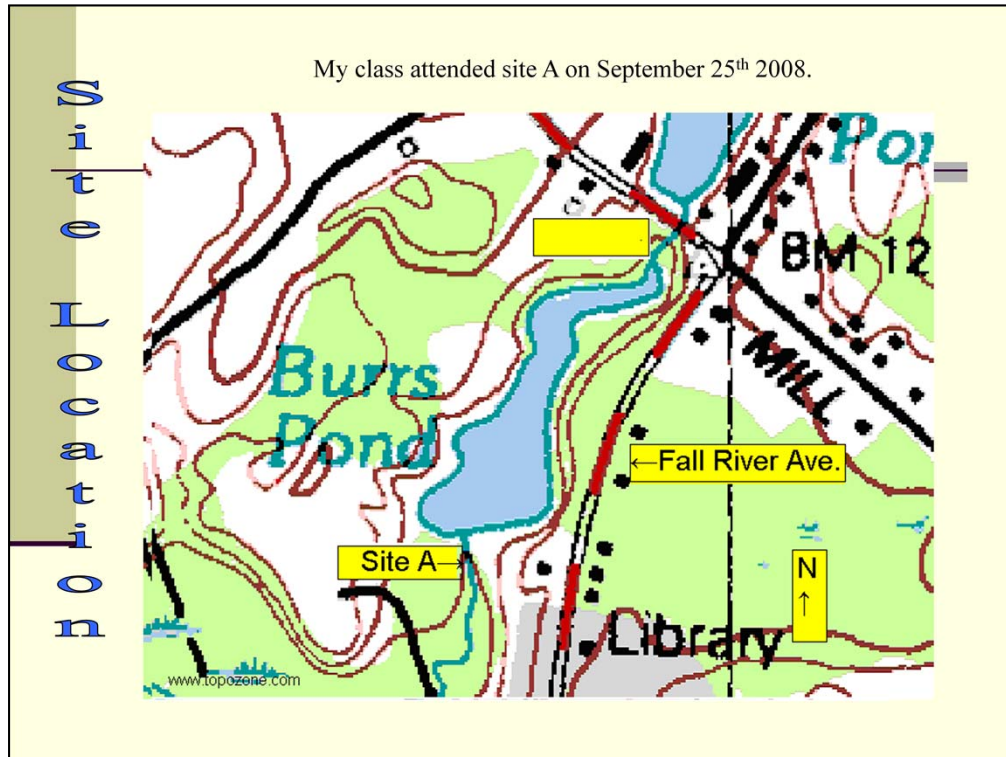
Seekonk High School, Seekonk, Massachusetts (2009). *Runnins River*. In Watershed Access Lab Projects. Project 73.

Available at: https://vc.bridgew.edu/wal_projects/73

This item is available as part of Virtual Commons, the open-access institutional repository of Bridgewater State University, Bridgewater, Massachusetts.



Here is a picture of runnins river



The site was very close to our school, and near a popular restaurant people in seekonk go to

Streamside Biosurvey

- Sunny
- Trees
- Drainage pipe
- Rocky
- Plants in stream
- Some Fish



Streamside Biosurvey

Many rocks in the river

Waterfall, causing water to move faster

Foam gathering at corner of river

Hill on one side of the river with more shade

The other side many trees and more sun shining to the river.

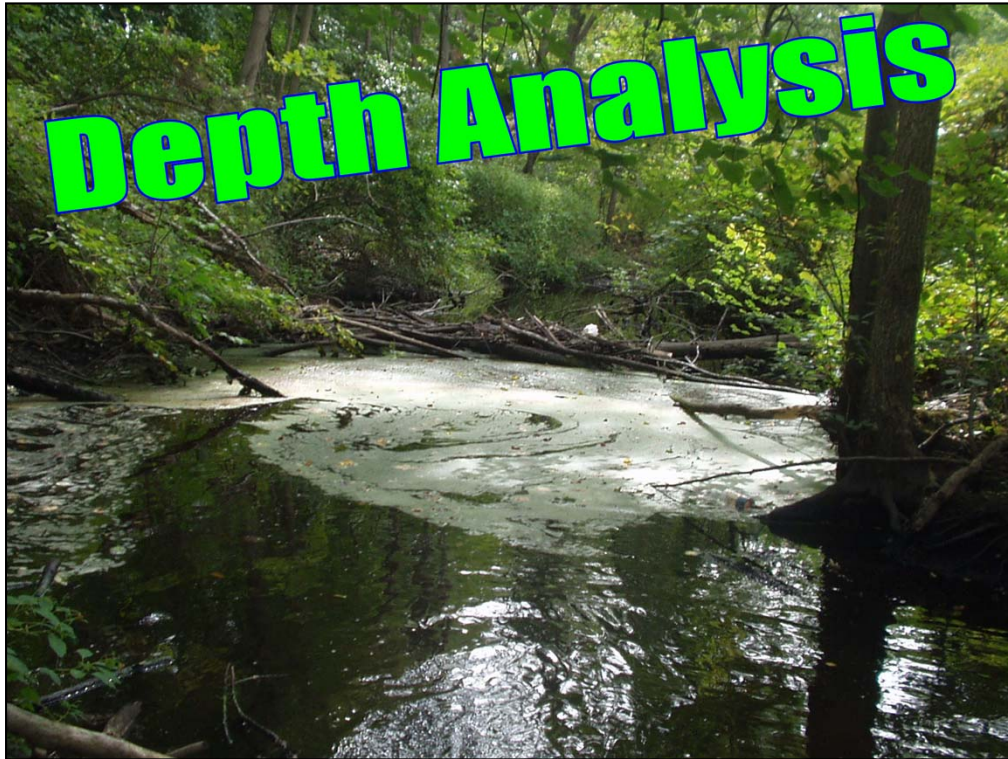


Measuring Flow

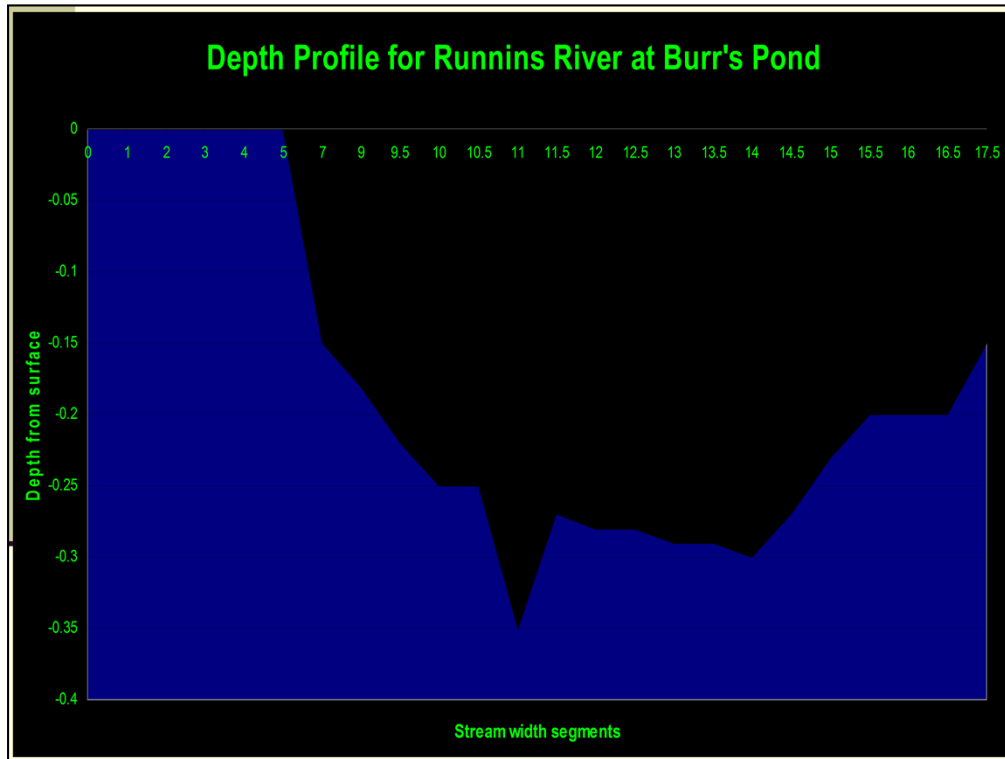


Flow data

- Flow measurements were taken at each of 9 segments of the river width.
- The average flow calculated for the site was .49 ft./sec.



Many people measured the depth with certain tools supplied to us.



Water Sampling



Water Sampling Procedure

Our class, collected samples of the streams water.

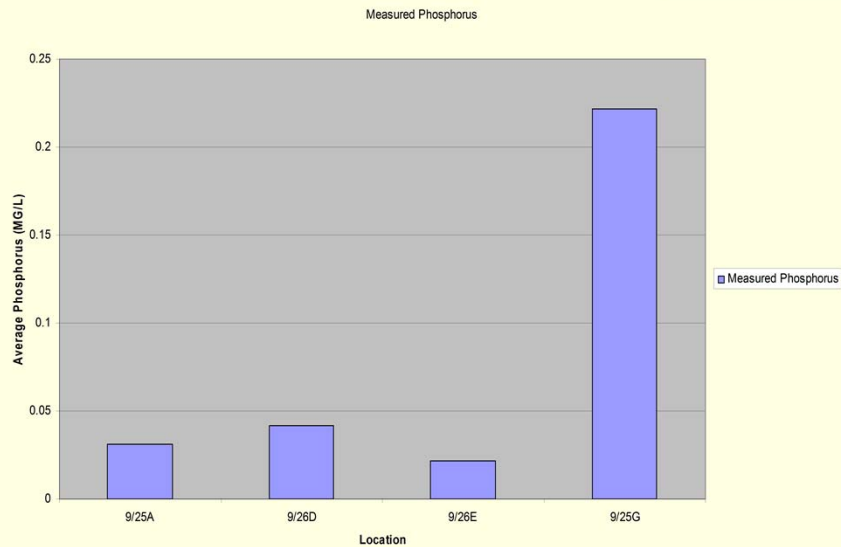
When we got all of the samples we took them back to class to measure the phosphorus.

The materials we used were PhosVer 3 Powder Pillows, 2-10ml sample cells, and a Hach 2010.

Once we went through all of the steps we got the phosphate level of the river.

My group got samples of the water to later test in class

Phosphate Data



This chart compares the four days that class went. It compares the phosphate level.

What the Data Means

- After looking over a Aquatic Chemistry Reference Sheet it showed that our phosphate level was 0.04 ppm which is overall pretty good.
- This level is typical for undisturbed forest streams.

During class we measured the phosphorus level.

Collecting Macroinvertebrates





Macroinvertebrate Collection & ID

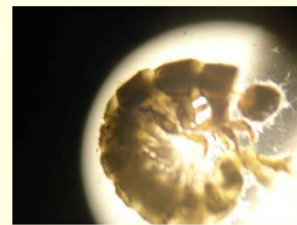
- From the Runnins River, we discovered various types of bugs.
- Discovering these organisms can tell us what species they are and how they interact with the river's environment.
- After gathering our report, our MGBI is 5.38.



Odonata



Coleoptera



Amphioda

We took class time to observe different organisms we found in runnins river

Biodiversity

Plants observed include the following:

- Dandy Lions
- Moss
- Live Oak
- Southern Catalpa
- Black Oak
- Tall Trees
- Yellow/White Plants
- Poison Ivy
- Eastern Cottonweed
- Bigtooth Aspen

Animals observed include the following:

- Mosquito
- Squirrel
- Bird
- Duck
- Dragonfly
- Bees
- Ants

It was a very foggy day and I regocnized many organisms and plant life that I have not studied before.

Biodiversity Continued...

DISRUPTIONS

-Unnatural disruption including bottles, buckets, and bags. There is also a pipe coming in from the road which brings in pollution and may cause living organisms to die.



Conclusions

- The result of the phosphate test was that the river is fairly healthy
- The MGBI turned out to be 5.38, moderately impaired.



MGBI stands for MAJOR GROUP BIOTIC INDEX

Thank You...

Kim, Dr. Curry, Ms. McGovern, Seekonk Land Trust, and Mrs. Cunard for taking your time helping us with our investigation at the Runnins River. We really appreciate your consideration and helping us learn something new.

We wouldn't have done better with out all of our helpers.