



Bridgewater State University

## Virtual Commons - Bridgewater State University

---

Bridgewater State Yearbooks

Journals and Campus Publications

---

1945

### Alpha [Yearbook] 1945

Bridgewater State Teachers College

Follow this and additional works at: <https://vc.bridgew.edu/yearbooks>



Part of the [Education Commons](#), and the [Social History Commons](#)

---

#### Recommended Citation

Bridgewater State Teachers College. (1945). *Alpha [Yearbook] 1945*.

Retrieved from: <https://vc.bridgew.edu/yearbooks/59>

This item is available as part of Virtual Commons, the open-access institutional repository of Bridgewater State University, Bridgewater, Massachusetts.

# ALPHA

*1945*





Myra A. Luce  
gym









CLASS OF 1945

*Alpha*

STATE TEACHERS COLLEGE

BRIDGEWATER • MASSACHUSETTS





D E D I C

*To the men and women of '45  
Who are fighting for Victory*

*To them . . .*

*Wherever they may be  
We dedicate this book*

BURGESS, JOHN ALLYN, III

CASEY, ALICE PATRICIA

CONLON, RICHARD PATRICK

DOREY, RICHARD EDWARD

FEARS, RUSSELL PRESCOTT

GIBSON, WALTER DANA

GOLDBERG, MELVIN

GOLDBERG, MILTON BRUCE

GRIMLEY, RICHARD THOMAS

LIND, FRED CHARLES

MAHONEY, JOSEPH JEREMIAH

SALVATORE, VINCENT DANTE

SIDES, WILLIAM BRADFORD

WEINBERG, ROBERT

WOGNAR, EDWARD

A T I O N



JOHN J. KELLY

*President*

# *To the Class of '45*

In this, the era of the radio, the news commentator and propaganda agents, too many people accept as fact the opinions which are so carelessly and casually sent forth upon the air waves. There is not enough discernment, not enough careful distinction.

Common sense dictates that we do our own thinking; common sense requires that we look at issues objectively. Observation and knowledge of common things, understanding of human nature, human sympathy, self-control, a sense of proportion, penetrating insight and mental agility, these are the elements of straight thinking. Common sense is developed in men's minds by observation and the habit of learning from observation and experience.

This common sense cannot be taught directly, nor as part of a school curriculum; it must be acquired.

In your preparation for teaching the opportunities that have been yours to observe, to think, to analyze, to compare should serve you well as you develop in the minds and hearts of your pupils a common sense attitude toward life and their fellow men.

May your success and happiness be measured only by your unselfish service to those whom you teach.

A handwritten signature in cursive script, reading "John F. Kelly". The signature is written in dark ink and is positioned in the lower right quadrant of the page.





F A



CULTY

# Faculty



JOSEPH I. ARNOLD  
*Sociology*  
*History*



EDITH H. BRADFORD  
*French*  
*Spanish*



MARY I. CALDWELL  
*Physical Education*



JULIA C. CARTER  
*Librarian*

MARY M. CROWLEY  
*Art*

RUTH E. DAVIS  
*Direction of Training*  
*Education*



JOHN L. DAVOREN  
*English*

LOIS L. DECKER  
*Physical Education*





# B. S. T. C.

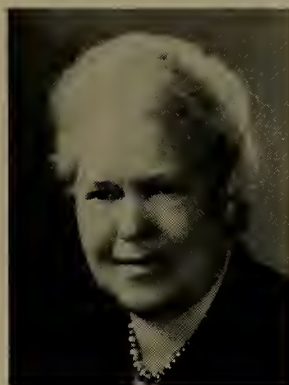
CHARLES E. DONER  
*Handwriting*

CHARLES E. FOTH  
*History*



BESSIE E. GOFF  
*Assistant Librarian*

E. IRENE GRAVES  
*Biological Sciences*



M. KATHERINE HILL  
*English*

PAUL HUFFINGTON  
*Geography  
Geology*



T. LEONARD KELLY  
*Chemistry  
Physical Science*

OLIVE H. LOVETT  
*English*



RUTH I. LOW  
*English*



IVA V. LUTZ  
*Education*



MARY J. MORIARTY  
*Physical Education*



EDNA M. MULLEN  
*Dietitian  
Nutrition*

DOROTHY D. NUTTER  
*Art Supervision*

S. ELIZABETH POPE  
*Dean of Women  
Education*



ROBERT W. RUCKER  
*Education  
Geography*

FRIEDA RAND  
*Music*



BALFOUR S. TYNDALL

*Dean of Men  
Physics  
Physical Science*

FREDERICK L. WOOD

*Mathematics  
Economics*



CLEMENT C. MAXWELL

*English  
Sociology*



GLADYS L. ALLEN  
*Grade Two*

LOUISE H. BORCHERS  
*Grades Four and Five*



ELIZABETH HOLLIS  
*Grades Two and Three*

EVELYN R. LINDQUIST  
*Principal*



MARY L. MARKS  
*Kindergarten*



GERTRUDE M. ROGERS  
*Grade One*



GRACE V. ROWLAND  
*Grade Six*



HELEN E. SLEEPER  
*Grade Four*

GRACE E. SMITH  
*Grade One*

CHARLOTTE H.  
THOMPSON  
*Grade Three*



CATHERINE D. TOWEY  
*Grade Six*

MABELLE WARNER  
*Grade Five*







BRENELLE HUNT



NEVA I. LOCKWOOD



LOUIS C. STEARNS

## *In Appreciation*

In June, 1944, three beloved members of our faculty achieved the goal of all teachers, leisure time to reflect upon a life of service and to spend doing the things they have always dreamed of doing.

Our three years of association with Miss Lockwood, Mr. Hunt, and Mr. Stearns have left happy memories of their many kindnesses and the sense of gratitude which the student must always feel for the unselfish master.

Now that they have been relieved of the arduous duties of the classroom, may they long enjoy the fruits of their labors. We shall look forward to Alumni gatherings of the future with the hope of renewing treasured friendships.



*“Not to be ministered unto  
but to minister”*

S E N

I O R S





ROSE E. BATES

Randolph

*Elementary*

Dramatic Club 2, 3, 4; Topics-of-the-Day Club, Secretary 2, President 3, Vice President 4; Press Club, Vice President 3, President 4; Day Student Council, President 4.

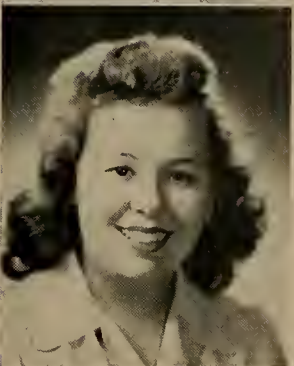


MARY E. BEGLEY

Lakeville

*Elementary*

Dramatic Club 1, 2, 4; S. C. A. 1; *Alpha* 3, Art Editor 4; W. A. A. Board 2; Day Student Council, Vice President 4.



HAZEL I. BENSON

Brockton

*English-Library*

HILDA BERGER

Brockton

*Elementary*

Menorah Club 1, 2, Secretary 3, President 4; Kappa Delta Pi 4; Dramatic Club 2.



CLYDE ORMAND BEZANSON

Brockton

*Geography*

Soccer 1; M. A. A. 1, 2, 3, 4; Boyden Men's Club 1, 2; Kappa Delta Pi 3, 4; *Campus Comment*, Business Manager, 3, 4.



BETTINA BREENE

Taunton *Elementary*  
Newman Club 1, 2; Dramatic Club 1, 2;  
S. C. A. 3; Class Treasurer 4.



MARY L. CAPIFERRI

Quincy *English*  
Newman Club 1.



CATHERINE M. CARROLL

Medford *English*  
Garden Club 1, 2; Newman Club 1, 2, 3, 4;  
S. C. A. 3, Treasurer 4; W. A. A. Board 1.



JANE B. CASS

Brockton *Elementary*  
Dramatic Club 2, 3, President 4; Alpha Psi  
Omega 3, President 4; Topics-of-the-Day Club 4;  
Press Club 4; *Campus Comment* 3.



GERTRUDE BLAKELEY CHATTERTON

Somerset Centre *Social Studies*  
Orchestra 1; Tillinghast Dormitory, Treasurer  
3, President 4.



L. AVIS CLIFTON

Somerset Centre *History*  
*Campus Comment* 1; Library Club 3, 4;  
 Dramatic Club 3, 4; W. A. A. Folk Dancing Director  
 3, 4.



JEAN F. CONDON

Weymouth *Elementary*  
 Newman Club 1, 2, 3, 4; Garden Club 3;  
 Library 3, 4.



ALDA M. COSTA

Bridgewater *Geography-Science*  
 Newman Club 1, 2, 3, 4; Day Student Council  
 2; S. C. A. 3, 4; W. A. A. Board 4; Secretary of Senior  
 Class 4; Chairman Sixth War Loan Drive.

ESTHER E. DONOHUE

North Easton *Mathematics*  
 Glee Club 2, 3, 4; *Campus Comment* 1, 2, 3;  
 Press Club 2; Secretary of Woodward Dormitory 4.



CLAIRE A. DRISCOLL

Boston *Elementary*  
 Newman Club 1 2, 3, 4; Press Club 2; Garden  
 Club 2, Secretary 3; Dormitory Council, Vice Presi-  
 dent pro-tem 4.



THEDA W. DUTRA

Middleboro

Orchestra 1; Dramatic Club 2.

*Elementary*



CLAIRE L. EMERSON

Hyde Park

*Elementary*

Glee Club 1, 2, 3, 4; Student Fellowship 2, 3, Vice President 4; *Alpha*, Secretary 4; Tillinghast Dormitory, Secretary 3, Vice President 4; Dormitory Council 3, 4; S. C. A. 3.



ADRIENNE MARIE GARRITY

Weymouth

*Elementary*

Newman Club 1, 2, 3, 4; Dramatic Club 2, 3, 4; Day Student Council, Secretary 4.



M. ELEANOR GEARY

Gloucester

*English*

*Campus Comment* 1, 2, 3, Editor-in-Chief 4; Glee Club 2, 3, 4; Press Club 1, 2, 3, General Director 4; Newman Club 1, 2, 3, 4; Library Club 3, 4; S. C. A. 4; Dramatic Club 1, 2.



DOROTHY R. GIFFORD

Faithaven

*Elementary*

Mary Washington College 1, 2; Home Economics Club 1, 2; Hyannis S. T. C. 3; K. P. Club 4





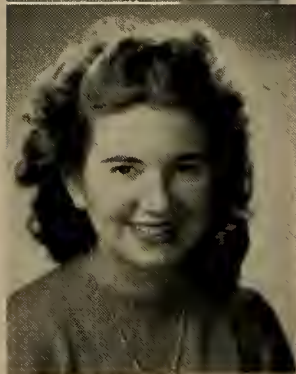
ELIZABETH A. HALLISEY

Brockton *Elementary*  
Press Club 1; *Campus Comment* 1, 2; Newman  
Club 1, 2, 3, 4; Kappa Delta Pi 4.



CONSTANCE LILLIAN HARTWELL

East Pembroke *Geography*  
French Club 1; Glee Club 1, Librarian 2,  
President 3, 4; Mixed Choir 1; Woodward Sextette  
2, 3, 4; Class Vice President 4; Dramatic Club 2;  
*Campus Comment* 3.



MADELYN L. HOGAN

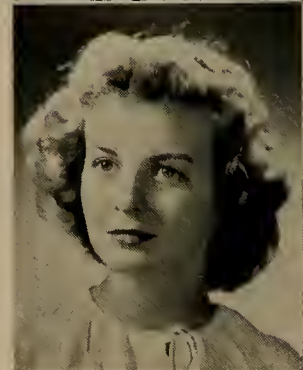
Holbrook *English*  
Newman Club 2, 3, 4; *Campus Comment*  
1, 2, 3, 4.

ANNE E. HOUGHTON

North Attleboro *Elementary*  
Glee Club 2, 3, 4; Newman Club 1, 2, 3, 4;  
Library Club 3, 4; *Campus Comment* 1, 3; K. P.  
Club 1; Kappa Delta Pi 4; Election Committee 3;  
Vice President pro-tem Senior Class.

DOROTHY HOWES

Dennis *English*  
S. C. A. 4; Dramatic Club 4; *Campus Comment*  
4; Hyannis S. T. C. 1, 2, 3.



MELLICENT I. JENKINS

East Braintree *Elementary*  
Glee Club 2, 3, 4; Kappa Delta Pi 3, Secretary 4; S. C. A. 2.



SHIRLEY A. JOY

Taunton *Elementary*  
Newman Club 1, 2.



CONSTANCE M. KENNEFICK

Gloucester *Geography-History*  
Newman Club 1, 2, 3, 4; Library Club 3, Vice President 4; W. A. A. Outing Director 3, Corresponding Secretary 4; WACMSTC, Executive-Secretary-Treasurer 4; Press Club 1; *Campus Comment* Staff 1, 2, 3, 4; S. C. A. Seal Committee 4.



HELEN R. F. KOLENDA

Brockton *English*  
Kappa Delta Pi 3, Historian-Reporter 4.



MARY LOUISE KRÉMP

Marion *Geography*  
Orchestra 1, Student Director 2, 3, 4; Glee Club 1, 2, 3, 4; French Club 1; Kappa Delta Pi 3, 4; Mixed Choir 1; Dormitory Council 4; S. C. A. 3, 4; Lecture Fund Committee, Co-chairman 3, 4.



LOUISE F. LAMBERT

Sandwich *Elementary*  
Newman Club 1; Garden Club 1; *Alpha*,  
Photography Editor 4; W. A. A. Board 2, 3.



HANNAH LEAVITT

Haverhill *Elementary*  
Kindergarten-Primary Club 1, 2, 3, Presi-  
dent 4; Garden Club 1; Menorah Club 1, 2, President  
3; *Campus Comment* 1, 2; Library Club 1; W. A. A.  
Board 2, Recording Secretary 3; Lecture Fund Com-  
mittee 2; Chapel Committee 2; Kappa Delta Pi 4;  
Dramatic Club 1, 2; *Alpha* 3, Advertising Manager 4.



HELEN W. LUCAS

Attleboro *English*  
Newman Club 1, 2, 3, 4; Kappa Delta Pi,  
Secretary pro-tem 3, President 4; President of Dormi-  
tory Council 4; Class Secretary 2; Chairman of  
Elections 3.

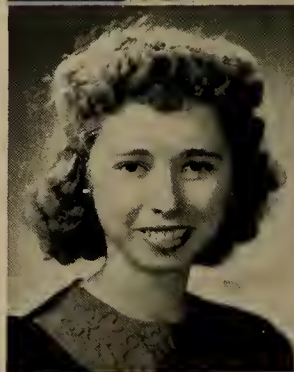
PHYLLIS V. LUCEY

Brockton *Elementary*  
Press Club 4; Topics-of-the-Day Club 4;  
Dramatic Club 2, 3, 4; Alpha Psi Omega 3, Assistant  
Director 4.



CLEMENTINE M. MAGLIANO

Brockton *Elementary*  
Newman Club 1, 2; W. A. A., Archery Head  
4, Secretary pro-tem 4.





MARY E. MCCARTHY

Brockton *Elementary*  
*Campus Comment* 2; Press Club 1; Newman  
 Club 1, 4.



CATHERINE J. MCCROHAN

New Bedford *Math.-Science*  
 Newman Club 1, 2, 3, 4; Dormitory Council,  
 Vice President 4; Woodward Dormitory, Vice Presi-  
 dent pro-tem 3.



HELEN N. MOIR

Marshfield Hills *Elementary*  
 Student Fellowship, Board 1, 4; Secretary 2,  
 President 3; *Alpha*, Assistant Business Manager 3;  
 K. P. Club 2; Dramatic Club 2; Glee Club 1, 2, 3, 4;  
 Chapel Committee, Treasurer 3; S. C. A., Vice Presi-  
 dent 4; Kappa Delta Pi 3, 4; *Campus Comment*,  
 Assistant Circulation Manager 2, 3.



FRANCES MORRELL

Canton *English*  
 W. A. A. Biking Head 3; Dramatic Club 2, 3,  
 4; Alpha Psi Omega 3, Stage Manager 4; Library  
 Club 2, President 3; Newman Club 1, 2, Secretary 3;  
*Campus Comment* 2, News Editor 3; Press Club 1, 2;  
 Woodward Dormitory, Vice President pro-tem 3.



DOROTHY E. MORTON

Plymouth *Elementary*  
 Woodward Sextette 2, 3, 4; Glee Club 1, 2, 4,  
 Secretary 3; *Campus Comment* 2, 3, 4; Student Fellow-  
 ship 2, 3, 4; Kappa Delta Pi, 3, 4; S. C. A., 2nd Vice  
 President 4; *Alpha*, Assistant Photography Editor 3,  
 Editor-in-Chief 4; School Store, Manager 2, 3;  
 Dormitory Council 3.



GERALDINE MULLER  
South Braintree *Elementary*  
Lecture Fund Committee, Secretary 4.



REGINA M. MURRAY  
Randolph *Elementary*  
Glee Club 2, 3, 4; Press Club 2, Treasurer 3;  
Newman Club 2, 3, Secretary 4; Library Club 3,  
Secretary 4; W. A. A. Biking Head 4; Dormitory  
Council, President pro-tem 4.



JEAN NICOLL  
Brockton *Elementary*  
Day Student Council 1; *Campus Comment*  
1, 2; Library Club 3, 4; W. A. A. 1; Class Secretary 3;  
S. C. A., Secretary 4.



EDITH F. NOLAN  
Mattapan *History-English*  
Newman Club 1, 2, President 3, 4; *Campus*  
*Comment* 1, 2, Sports Editor 3, 4; W. A. A., Swimming  
Head 3, 4, Tennis Head 3; Recording Secretary 4;  
WACMSTC, Financial Chairman; Library Club 3.



VINETA RUTH NOYES  
West Bridgewater *Elementary*  
Kappa Delta Pi 3, Vice President 4.

MARY RUTH OLENICK

Brockton

*Elementary*

S. C. A. Representative 3, 4; Newman Club 1; Kappa Delta Pi 3, 4.



LORRAINE F. PORTER

Jamaica Plain

*Geography-Math.*

Library Club 1, Treasurer 2, Vice President 3; Press Club 2, Secretary 3; Newman Club 2, 3, 4; *Campus Comment* 2, News Editor 3; Dramatic Club 2, 3, 4; Alpha Psi Omega 3, Treasurer 4; Kappa Delta Pi 3, Treasurer 4; Woodward Dormitory, Vice President 4; W. A. A., 1st Vice President 4, Modern Dance Head 2, 3; WACMSTC, Chairman 4.



MAIDA RUTH PRATT

West Bridgewater

*Physical Education*

W. A. A. Board 2, 4; Glee Club 2, 3; Foghorn 1, 2, 3; Dormitory Council 2, 3; Class Secretary 3; Hyannis S. T. C. 1, 2, 3.



MARIAN ELIZABETH RADCLIFFE

Plymouth

*Math.-Social Studies*

Washington State Normal School 1, 2; W. A. A. Board 4, Hockey Head 4; *Alpha*, Business Manager, 4; Student Fellowship 3, 4; *Campus Comment* 3, 4.



MADELYN ALICE REED

Hyannis

*English-Library*

French Club, Secretary 2, Vice President 3; Library Club 3, 4; Glee Club 3, 4; S. C. A. 3; Dormitory Council, Secretary 4.





LOUISE C. REILLY

Bridgewater *Geography-History*  
 Newman Club 1, 2, 3, 4; Day Student Council,  
 Assistant Treasurer 3, Treasurer 4; W. A. A. Hockey  
 Head 3, President 4; S. C. A. 4; Civic Committee 4;  
 WACMSTC, Presiding Officer 4.



ANNE V. REYNOLDS

Quincy *Elementary*  
 Newman Club 1, 2, 3, 4; Kappa Delta Pi 4;  
 Class Vice President 1, 2, President 3, 4; S. A. C.  
 3, 4; S. C. A. 3, 4.



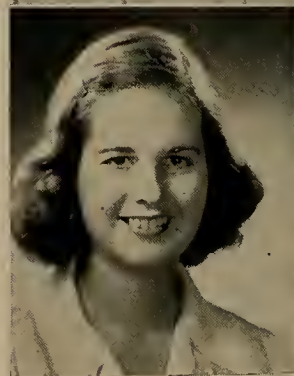
VIRGINIA I. SHANLEY

Brant Rock *English-Geography*  
*Campus Comment* 1, 2, 3, 4; Library Club,  
 1, 2, 3, Treasurer 4; W. A. A., Basketball Head 4;  
 S. C. A. 1.



ELIZABETH J. SNOW

Carver *Elementary*  
 Hyannis State Teachers College 1, 2.



MARY T. SULLIVAN

Brockton *English*  
 Newman Club 1, 2, President pro-tem 3, 4;  
*Campus Comment* 1, 2, 3; Glee Club 2; Library Club  
 3; Dormitory Council 4, Vice President 3; S. C. A.,  
 President 4.

SYLVIA SUNDELIN

West Barnstable

*English*

*Alpha* 4; Dramatic Club 4; S. C. A. 4.



MARY C. TWOMEY

South Weymouth

*English*

Glee Club 1, 2, 3, 4; Dramatic Club 2; Kappa Delta Pi 4; Newman Club 1, 2, 3, 4; *Alpha*, Treasurer 4; Woodward Dormitory, Treasurer 4; *Campus Comment*, Head Typist 1, 2, 3, 4.



MARTHA VICKERY

Plymouth

*Geography-Science*

Glee Club 1, Librarian 2, Vice President 3, 4; Student Fellowship 2, Vice President 3, 4; Woodward Sextette 2, 3, 4; Class Treasurer 3; Woodward Dormitory, President 4.



MARILYNN WATERMAN

Bridgewater

*Elementary*

Dramatic Club 2.



E. FYRNE WATTERS

Bridgewater

*English*



DOROTHY EDITH WELLS

Weymouth Heights

*English*

Student Fellowship 1, 2, Secretary-Treasurer 3, President 4; W. A. A. Outing Head 2, Corresponding Secretary 3, 2nd Vice President 4; Dormitory Council, Secretary pro-tem 3; *Alpha*, Literary Editor 4; Hobby Club 2.

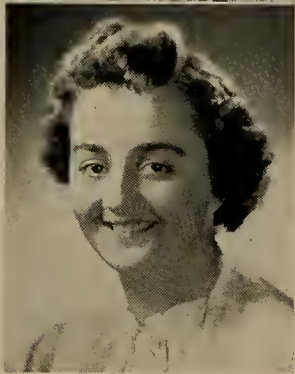


MEREDITH FLAGG WHITE

Elmwood

*Elementary*

Orchestra 1, 2, 3, Secretary 4; Glee Club 3, Vice President 4; Day Student Council, 1st Vice President 4; Dramatic Club 1, 2; S. C. A., Acting Secretary 4.



HELEN WHITING

Plymouth

*Physical Education*

Choir 1, 2, 3; W. A. A., Secretary 2, Vice President and President 3, Board 4; Class President 3; Calendar Committee 3; Fire Chief Dormitory 3; Dormitory Council, Treasurer 4, Volleyball Head 4.

**In Memoriam**

**P.F.C. Raymond J. Boudreau**

**May 12, 1943**

**Amphibian Engineers**

**Co. B, 594 E., B & S. Regiment**



## *Former Members of Class*

ADAMS, OLIVE ROBERTS	HENDRICKS, ELMA DEAN
ATKINSON, GERTRUDE McGRAY	WEST, CONSTANCE LOUISE
BENNER, BEVERLY ALFRETТА	MARY TAYLOR JAMIESON
BERRY, JOAN MARY	KING, JOAN TERESE
*BURGESS, JOHN ALLYN, III	LAMB, JEAN DOROTHY
*CASEY, ALICE PATRICIA	*LIND, FRED CHARLES
CHIANCIOLA, SERAPHINA MARGARET	*MAHONEY, JOSEPH JEREMIAH
*CONLON, RICHARD PATRICK	MAJOR, LUCILLE MARJORIE
COOK, MARGUERITE MAY	MENDALL, JOANNE
D'AGATA, FRANCES LORRAINE	MORRISSEY, ANN CATHERINE
DANTOS, EVERDIKE	PAOLETTI, LAURA ARGIA
DENCH, DOROTHY D.	PAQUETTE, SIMONE
DORAN, SUSAN ANN	PARSONS, STELLA SYLVIA
*DOREY, RICHARD EDWARD	*SALVATORE, VINCENT DANTE
EASTON, SHIRLEY ELIZABETH	*SIDES, WILLIAM BRADFORD
*FEARS, RUSSELL PRESCOTT	SUPPLE, EMMA LOUISE
*GIBSON, WALTER DANA	THOMPSON, MARY FRANCES
*GOLDBERG, MELVIN	*WEINBERG, ROBERT
*GOLDBERG, MILTON BRUCE	*WOGNAR, EDWARD
*GRIMLEY, RICHARD THOMAS	MEADE, EDWARD
HACKETT, ROSEMARY CECILIA	PRIESTNAL, MARION

\* Now in the armed services.





# History of



WE began our college life with a transformation into Angels. Who could ever forget that first grueling day in the Gym?

However, it wasn't long before we were labelled as something entirely different. Yes, we were the typical green Freshmen. Do you remember getting up at least a half hour early to put up your hair in rags, tie on a lampshade chapeau, and comply with a dozen other annoying requirements?

We also possessed seventeen of that rare species of Homo Sapiens known as MAN! Praying for rain, soap-box orations, find-your-own-way-back walks were only a few of the hardships they endured.

But a truce was made with our former enemies, the Sophs, at the Freshman Party when we took the Bridgewater Oath and became a real part of B.T.C.

Remember the Barn Dances, Frat Dances, and dancing in the Gym Wednesday nights (where three Freshmen could always be found trumping Miss Henderson's ace)?

We ushered in the Xmas season with a formal—the Poinsettia Prom, other Yuletide activities included a night of magic, carolling, and a sleighride. These culminated in one of our most treasured memories—the Xmas Banquet.

We loaded our suitcases with books and immediately forgot about them until our return from the Xmas Vacation, when the Gremlin of Midyears reared his ugly

head and studying changed from an avocation into a necessity.

With the help of an understanding Big Sister's reassurances, we endured the Midyear ordeal. Once this milestone was passed, the time flew by. An outstanding event was the trip the Glee Club made to Pops on Bridgewater Night to sing in Symphony Hall.

Many of us said goodbye to our Big Sisters in June, but only after the thrilling Commencement exercises. Who can forget the furtive glances at the Oak Boughs to determine what member of the insect family might fall?

Thus came to a close our first year at B.T.C.

The sophistication we had acquired as Freshmen was fully brought to bear on the unsuspecting Freshman Class of '46. They emerged unscathed, but slightly humbled, after a week of wrecked rooms, nightly entertainments, and Truth Society. We realized then that they were pretty good kids after all.

This brought more responsibilities, deeper friendships, and memorable experiences. Many lasting associations were formed at the Soph-Junior Social in Tillie when the sailors from the Weymouth Base were our guests. A return invitation to attend a formal at the Base was eagerly accepted and not soon forgotten.

Xmas Banquet had become a treasured tradition and was enjoyed even more than the previous year. Remember singing



# *the Class*

carols in the Gym afterward in the dark, due to a blackout?

The shadow of war was darkening, and in April it stretched out a cold hand to clutch the popular leader of our class, Dick Dorey, and many of the other fellows. No longer could we watch Dick Grimley and Dorey performing their inimitable antics on the basketball floor.

By June we had almost ceased to be a co-ed college in anything but name. We raised our Oak Boughs for the last time and said goodbye to another class and another year.

This September brought a challenge. Could we "Do Unto Others" and become helpful Big Sisters to the bewildered Freshmen? We could and did, and it was a very satisfying experience to feel that we were carrying on one of the traditions of B.T.C.

By this time we had really become "the girls they left behind" and the post office was besieged with an increased supply both of incoming and outgoing mail.

This was the year when we tried our wings for an eight-week stretch at the "T. S." It proved very enjoyable to some and to others an endless term of Luxing stockings nightly. We all survived, however, and came out feeling we had experienced our "trial by fire" and were now well on the road to becoming professionals.

In January we enjoyed our second Mardi Gras. Beautiful costumes, in-

genious floats, and imported men all contributed to its success.

Other successful affairs were the Glee Club and Orchestra Concerts, Sophomore Sophistries (a bird's-eye view of the Faculty), and the Dramatic Club Spring Play.

Then came the great day—Graduation. Many of us experienced an annoying lump in our throats as we held the Daisy Chain in tribute to the Seniors. No one could tell us they weren't the finest group of girls anywhere, and we knew we were going to miss them in many ways in the year ahead.

September rolled around again bringing a few changes of station-marriage and its intermediate steps. Our class had dwindled, but we were determined to make it one of our best years at B.T.C.

Our sister College on the Cape contributed new blood to college activities with the advent of Physical Education Majors and other interesting people.

All the tradition which we had been storing up flashed upon us. Symbolically the Tower Light, which had been dimmed for military purposes, shone out with all its meaning. The realization came to us that we must cling to each event and store it up in our Treasure Chest of Memory.

The Supper Hike was reminiscent of former years, and all the funny, friendly, spirited times this tradition has occasioned. "Goin' to Kentucky," George Washington,





and the sand pit are only a few expressions which bring a smile of remembrance.

November was a busy month with Big and Little Sister Party, Open House Week-end, the Barn Dance (sponsored by Newman Club, Menorah and Student Fellowship), Book Week Tea, and the most welcomed Thanksgiving Recess.

After this breathing spell we returned for S. C. A. Social, Day Students Social, Christmas Concert, and best of all—Christmas Banquet. The glamour of evening gowns and the attractively decorated dining hall contributed to the success of the Banquet. This was surpassed only by the Faculty Reception which followed in the Gym. Miss Decker and Miss Caldwell jitterbugging, Mr. Tyndall, the lonesome sailor, looking for a date with a redhead, and Mr. Foth's reading from "Hyman Kaplan" were only a few of the highlights.

Then home again for the Christmas

Recess, back to the spectre of midyears thrown aside for a successful Alumni Week-end, including Play Night, conferences, luncheon and a tea, to say nothing of bull sessions until the wee small hours.

This year brought a challenge. After three years of preparation, were we capable of assuming the role for which we had studied? With trembling hearts and knocking knees we ventured forth. With the co-operation of sympathetic room teachers and the understanding of most of the pupils, we passed a more enjoyable eight weeks than we had dreamed possible.

The production of a second Gym-Jam to equal and if possible surpass the first, of two years ago, was a responsibility thrust upon the more athletic-minded members of our class. Needless to say the experience gained at the WACMSTC in October and the addition of the Physical Education Majors to our enrollment were two of the factors which assured a successful affair.

With other exciting events—house parties, concerts, plays, class productions, rushing parties, etc., the year drew to a close. Before we knew it, Graduation Day was here! This time we donned our Caps and Gowns with assurance and participated in Iyy March for the last time.

These are our memories of four years at B.T.C. These and many more personal ones that Time can never erase. May each member of the Class of '45 go forth to meet the problems of life strengthened through his associations and experiences at B.T.C.

Dorothy Morton '45





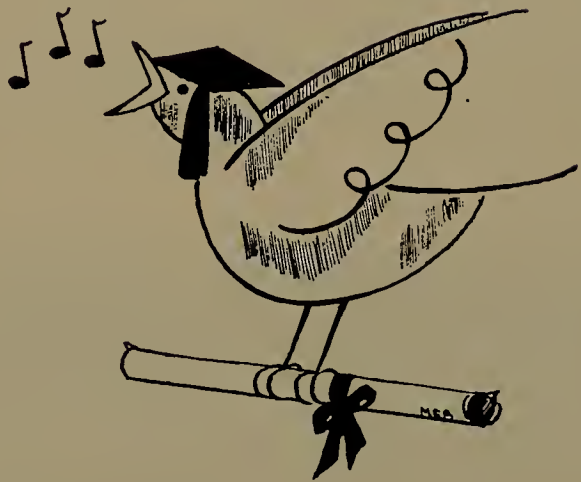
# *Class Ode*

Within your sheltering walls we've labored long,  
O Alma Mater, guide to knowledge rare;  
And now to minister to mankind  
We venture forth into a world to dare.

We pause to wonder what the future holds  
For us who stand upon its shadowed sill.  
So much there is of darkness and of doubt,  
Of plans that seem so hopeless to fulfill.

The myriad trials we've shared but charge us now  
To climb the heights and search for truth so pure  
That war nor tempest, hate nor greed  
May hurt the faith that we have built secure.

Dorothy E. Morton '45



# Dormitory

Life in the dormitory is one long orgy of eating, completely surrounded by women and rules. This theory of continual nourishment is based upon the Epicurean philosophy: that is, "Eat, drink and be merry" today, for every tomorrow is jeopardized by the possibility of a violent end, caused by an explosion in the ironing room or a fire in the smoking room.

One's associates consist of the usual extroverts and introverts; the latter are characterized by regular periods of hibernation directly preceding every exam, while the former are typified by spasmodic intervals of "rec" room worry, occurring at about the same times.

The selection of an appropriate roommate is vital to the durability of every individual. The ideal roommate should be generous, tactful, altruistic, industrious, domestic, intelligent, loyal, courageous, and cold-blooded. The last qualification is perhaps the most essential, since it is necessary to raise the temperature of one's room to at least 32 degrees on dark winter mornings, and, if one's roomie is sufficiently hardy to brave the elements, it is really a great boon. The most desirable roommate is well-stocked with sewing equipment, stamps, Kleenex, and food.

Mornings in the dormitory are varied. If you desire to sleep late, you are certain to be awakened at the crack of dawn by considerate friends who insist that brisk, morning air, frigid rays of refracted sunlight, and an overturned bed are just what Miss Haggart has ordered. If you would like to rise early, to cram for that \*!?! exam, you are sure to sleep through everyone's alarm-clock, and, despite all subsequent rushing, arrive at the dining-hall just one second too late for breakfast.

The life of the dorm student is made tolerable just by that continual hope for mail; the proper letter has been known to sustain girls for weeks at a time.

Evenings in the dorm are indicative of the personality of each of the inhabitants. If one is a plug, her door is barred with a "Quarantine" notice and a "lite cut" sign. The tattoo of a typewriter may frequently be heard, and the midnight oil is always burning. The really versatile student is the one most deserving of attention. This creature is simultaneously able to study, play bridge, listen to the radio, gossip, knit, eat, advise, and write letters to at least three different persons (keeping them all straight; it would never do to send



# Life

to one's parents a letter intended for an entirely different recipient!) Evenings are always high-lighted by the opportunity to dash downtown for a hamburger!

The dormitory is notorious for its most infamous features. At the very time when one discovers several weeks' laundry waiting scandalously in one's closet, the hot water is sure to be turned off for the evening. When one finds that unless she irons something *toute de suite* she will have to wear pajamas to class tomorrow, the irons are all mysteriously out of order. At the very hour of "One Man's Family" the fuse blows out. When one is desperately hungry, all the food in the dorm will have been consumed—and, to boot, the coke-machine will be empty. Just when one is dog-tired, and aching to fall into her warm, cozy, and hard-as-a-board cot, she will positively find turtles, maggots, grasshoppers, cracker-crumbs, and decaying vegetation between the sheets.

When one chooses to live in the dormitory, she irrevocably relinquishes all privacy for four long years. Her room is treated to periodical, unannounced visitations at the very times that it is in its most disreputable condition. Articles

of clothing have a way of disappearing and later turning up on the persons of one's best friends.

One's entire life is dedicated to the "records"—incriminating evidence regarding one's social life that may readily be used for blackmailing purposes by posterity. (There are a few items that have not as yet found their way to the "records," but to say more would be to disclose trade secrets and to cheat our successors of their due.)

If one has been so sufficiently fortunate as to ensnare one of the rarer sex, dorm life makes his complete capture a miracle indeed! Perhaps there is no kid brother to strip one of heavily applied sophistication, but certain individuals in positions of guardian angelship can do a great deal to obstruct progress.

Dormitory life is awful! It is a deliberate cramping of the style of youth; it promotes feelings of frustration, melancholy, and dissipation; it makes home look like heaven. Yet, nothing in the whole, wide world would ever make us voluntarily commute!

*Berniss Mazer '46*





# Commuters

At about 8:15 A.M. from Monday to Friday a large group of people can be seen headed eastward on School Street. Who are they? They are commuters of B.T.C. After having traveled five, ten, or twenty-five miles by Eastern Mass. Railway buses with bags of books slung over their shoulders, faces red, they make their way through the snow finally to reach the campus. Some of them may have burned the midnight oil the night before, but it is scarcely noticeable for they look so alive and invigorated. No matter how sleepy they may have felt when they left their homes an hour or more before, the sharp early-morning winter air succeeded in counteracting that feeling of drowsiness. Whatever may have been the cause of full awakening, the lively and spirited conversation which is carried on by the "trotters" to the time Boyden Hall is reached, and usually after, indicates the fact that they are completely awake.

Rains pour. Snowstorms blind and impair travel. Streets are ice-covered. Strong winds cut. Yet the commuters still come to B.T.C. They have oceans of fun in their travel and their study, a "gripe" here and a "groan" there being only two small drops in those oceans. Winter weather remains a challenge to the commuters, but it cannot defeat them. For most of the commuters, it remains an outlet for fun and jovial conversation.

Shortly before 9:00 A.M., infrequently after, groups of several beaming-faced individuals are to be seen entering any of the portals of Boyden Hall. They are more commuters, having been chauffeured to Bridgewater by fellow students who unerringly bear the risks and responsibilities of driving the family car, or their own, in nearly every type of hard New England weather.

All of these are the people that meet in the Day Students' Social Room or Lunch Room before classes begin



# Life

every morning. Particular pride is shared in the Social Room this year since they have made renovations. In this room everyone feels as though he belongs.

Reading the current magazines in this room has become a habit with most of the girls. Groups of them often can be seen discreetly observing the pictures in *Life*, or discussing articles appearing in *Times*. At the beginning of every month comes that familiar question, "Has the new *Mademoiselle* come in yet?" The newly-added bookcase offers reading for those who have already read the most recent magazines. Every so often the girls congregate and get a great deal of enjoyment from the *Trotters' Bits*, a newspaper put out by the Day Students. Topics of conversation vary widely in this room, but one that is being constantly brought up is the subject of those good old days when the fellows were with us on the campus.

After morning classes there is a mad dash to the coke machine, "the pause that refreshes" somehow seeming to have the ability of changing a dry sandwich into a highly appetizing victual. Pending the end of the war when the commuters hope to manage a small cafeteria in their Lunch Room, the coke machine remains an object of deep value to them.

More classes are attended before the basement corridor becomes cluttered with girls hurrying this way and that. The sound of lockers opening and closing can be heard above the clattering of the girls about what they must take home, who will meet whom where, who is going to have her bus ticket punched for whom, and any number of other questions. Warm clothes are adorned, galoshes and boots are put on, and the commuters are on their way home, five, ten, or twenty-five miles away.

Dorothy Christofori '46





# Extra Curricular Activities

## STUDENT CO-OPERATIVE ASSOCIATION

<i>President</i>	Mary Sullivan
<i>1st Vice President</i>	Helen Moir
<i>2nd Vice President</i>	Dorothy Morton
<i>Secretary</i>	Jean Nicoll
<i>Treasurer</i>	Catherine Carroll
<i>Assistant Treasurer</i>	Constance Macomber

## DORMITORY COUNCIL

<i>President</i>	Helen Lucas
<i>Vice President</i>	Catherine McCrohan
<i>Secretary</i>	Madelyn Reed
<i>Treasurer</i>	Hannah Leavitt

## WOODWARD DORMITORY

<i>President</i>	Martha Vickery
<i>Vice President</i>	Lorraine Porter
<i>Secretary</i>	Elizabeth Donohue
<i>Treasurer</i>	Mary Twomey

## TILLINGHAST DORMITORY

<i>President</i>	Gertrude Chatterton
<i>Vice President</i>	Claire Emerson
<i>Secretary</i>	Mabel Mason
<i>Treasurer</i>	Dorothy Belcher

## DAY STUDENT COUNCIL

<i>President</i>	Rose Bates
<i>1st Vice President</i>	Meredith White
<i>2nd Vice President</i>	Mary Begley
<i>Secretary</i>	Adrienne Garrity
<i>Treasurer</i>	Louise Reilly
<i>Assistant Treasurer</i>	Elizabeth Sheehan

## SENIOR CLASS

<i>President</i>	Anne Reynolds
<i>Vice President</i>	Constance Hartwell
<i>Secretary</i>	Alda Costa
<i>Treasurer</i>	Bettina Breene

## JUNIOR CLASS

<i>President</i>	Esther Rosenblatt
<i>Vice President</i>	Marjorie Tolman
<i>Secretary</i>	Elizabeth Roper
<i>Treasurer</i>	Arleen Linton

## SOPHOMORE CLASS

<i>President</i>	Ruth Anderson
<i>Vice President</i>	Eileen Finnegan
<i>Secretary</i>	Muriel Rowell
<i>Treasurer</i>	Elizabeth Roper

## FRESHMAN CLASS

<i>President</i>	Barbara Talbot
<i>Vice President</i>	Jeanne Moynihan
<i>Secretary</i>	Janet Allen
<i>Treasurer</i>	Marie McGowan

## WOMEN'S ATHLETIC ASSOCIATION

<i>President</i>	Louise Reilly
<i>1st Vice President</i>	Lorraine Porter
<i>2nd Vice President</i>	Dorothy Wells
<i>Corresponding Sec.</i>	Constance Kennefick
<i>Recording Sec.</i>	Edith Nolan
<i>Treasurer</i>	Dorothy Brooks
<i>Assistant Treasurer</i>	Lenore Kelly

## WOMEN'S GLEE CLUB

<i>President</i>	Constance Hartwell
<i>Vice President</i>	Meredith White
<i>Secretary</i>	Madelyn Guzzi
<i>Librarians</i>	Jean Crane
	Margaret Lopes

## ORCHESTRA

<i>Student Director</i>	Mary Kremp
<i>Asst. Stud. Director</i>	Phyllis Schmidt
<i>Secretary</i>	Meredith White
<i>Librarians</i>	Beverly Morey
	Jeanne Peck

# Extra Curricular Activities

## FRENCH CLUB

<i>President</i>	Lucille Paquette
<i>Vice President</i>	Dorothy Christofori
<i>Secretary</i>	Harriet Parsons
<i>Treasurer</i>	Janice Burchard
<i>Librarian</i>	Phyllis Clayman

## LIBRARY CLUB

<i>President</i>	
<i>Vice President</i>	Constance Kennefick
<i>Secretary</i>	Regina Murray
<i>Treasurer</i>	Virginia Shanley

## KINDERGARTEN-PRIMARY CLUB

<i>President</i>	Hannah Leavitt
<i>1st Vice President</i>	Vivian Chaffin
<i>2nd Vice President</i>	Constance Macomber
<i>Corresponding Sec.</i>	Dorothy Brooks
<i>Recording Sec.</i>	Phyllis Clayman
<i>Treasurer</i>	Jeanette Murchie

## TOPICS-OF-THE-DAY CLUB

<i>President</i>	Martha Howard
<i>Vice President</i>	Rose Bates
<i>Secretary</i>	Alice Twomey
<i>Treasurer</i>	Vivian Lovell

## DRAMATIC CLUB

<i>President</i>	Jane Cass
<i>Vice President</i>	Frances Burns
<i>Secretary</i>	Alice Twomey
<i>Treasurer</i>	Eldon Lawson

## PRESS CLUB

<i>President</i>	Rose Bates
<i>Vice President</i>	Eleanor Geary
<i>Secretary</i>	Annette Kerr
<i>Treasurer</i>	Thelma Parsons

## KAPPA DELTA PI

<i>President</i>	Helen Lucas
<i>Vice President</i>	Vineta Noyes
<i>Secretary</i>	Mellicent Jenkins
<i>Treasurer</i>	Lorraine Porter
<i>Historian-Reporter</i>	Helen Kolenda

## STUDENT FELLOWSHIP

<i>President</i>	Dorothy Wells
<i>Vice President</i>	Claire Emerson
<i>Secretary-Treasurer</i>	Altana Mann

## ALPHA PSI OMEGA

<i>Director</i>	Jane Cass
<i>Assistant Director</i>	Phyllis Lucey
<i>Stage Manager</i>	Frances Morrell
<i>Business Manager</i>	Lorraine Porter

## MENORAH CLUB

<i>President</i>	Hilda Berger
<i>Vice President</i>	Phyllis Werlin
<i>Secretary</i>	Esther Rosenblatt
<i>Treasurer</i>	Jack Herman

## CHAIRMEN OF STANDING COMMITTEES

<i>Handbook Committee</i>	Berniss Mazer
<i>Lecture Fund Com.</i>	Mary Kremp
<i>Chapel Committee</i>	Arleen Linton
<i>Civic Committee</i>	Eunice Kohler
<i>Elections Committee</i>	Elizabeth Connors
<i>Scholarship Com.</i>	Ilsa Chapin

## NEWMAN CLUB

<i>President</i>	Edith Nolan
<i>Vice President</i>	Elizabeth Connors
<i>Secretary</i>	Regina Murray
<i>Treasurer</i>	Mary Kennedy



# Class of 1946

## *President*

Esther Rosenblatt

## *Vice President*

Marjorie Tolman

## *Secretary*

Elizabeth Roper

## *Treasurer*

Arleen Linton





Class  
of  
1947



*President*

Ruth Anderson

*Vice President*

Eileen Finnegan

*Secretary*

Muriel Rowell

*Treasurer*

Elizabeth Roper





Class of





# 1948



*President*

Barbara Talbot

*Vice President*

Jeanne Moynihan

*Secretary*

Janet Allen

*Treasurer*

Marie McGowan

## *Alpha Board*

### EDITOR-IN-CHIEF

Dorothy E. Morton

### BUSINESS MANAGER

Marian E. Radcliffe

### ADVERTISING MANAGER

Hannah Leavitt

### LITERARY EDITOR

Dorothy E. Wells

### ART EDITOR

Mary E. Begley

### PHOTOGRAPHY EDITOR

Louise Lambert

### TREASURER

Mary Twomey

### SECRETARY

Claire Emerson

### ADVISERS

Miss Dorothy D. Nutter

Dr. Clement C. Maxwell

## *Undergraduate Members of the Board*

<i>Assistant Editor</i>	Barbara Kane
<i>Assistant Business Manager</i>	Elaine Jackson
<i>Assistant Advertising Manager</i>	Roberta Sullivan
<i>Assistant Literary Editor</i>	Dorothy Christofori
<i>Assistant Art Editor</i>	Dorothy Brooks
<i>Assistant Photography Editor</i>	Phyllis Schmidt

## *Appreciation*

We, the members of the ALPHA Board, wish to extend our deepest appreciation to all those who helped in the production of the 1945 yearbook.

We wish to extend our heartfelt thanks to Miss Pope for her invaluable service in the guiding of our finances; to Miss Nutter for her competent work in the capacity of both general adviser and art critic; to Dr. Maxwell for his sound literary advice; and to the Seniors for their co-operation and understanding of our problems.

# Faculty

ARNOLD, JOSEPH I.	24 Grove Street, Bridgewater
BRADFORD, EDITH H.	272 Summer Street, West Somerville
CALDWELL, MARY I.	193 Summer Street, Bridgewater
CARTER, JULIA C.	49 South Street, Bridgewater
CROWLEY, MARY M.	222 Summer Street, Bridgewater
DAVIS, RUTH E.	318 Summer Street, Bridgewater
DAVOREN, JOHN L.	59 Bedford Street, Bridgewater
DECKER, LOIS L.	21 Church Street, Bridgewater
DONER, CHARLES E.	43 Scotland Road, Reading
FOTH, CHARLES E.	134 Main Street, Bridgewater
GOFF, BESSIE E.	46 Pearl Street, Hyannis
GRAVES, E. IRENE	237 Summer Street, Bridgewater
HILL, M. KATHERINE	49 South Street, Bridgewater
HUFFINGTON, PAUL	173 Pleasant Street, Bridgewater
KELLY, T. LEONARD	43 Belcher Avenue, Brockton
LOVETT, OLIVE H.	36 Shaw Road, Bridgewater
LOW, RUTH I.	56 Bennett Street, Wakefield
LUTZ, IVA V.	92 Bedford Street, Bridgewater
MAXWELL, CLEMENT C.	11 State Street, Taunton
MORIARTY, MARY J.	57 Spring Hill Avenue, Bridgewater
MULLEN, EDNA M.	18 Arlington Street, Brockton
NUTTER, DOROTHY D.	145 Mt. Vernon Street, Winchester
POPE, S. ELIZABETH	15 Spring Hill Avenue, Bridgewater
RAND, FRIEDA	37 Church Street, Bridgewater
RUCKER, ROBERT W.	39 Pleasant Street, Bridgewater
TYNDALL, BALFOUR S.	17 Hillberg Avenue, Brockton
WOOD, FREDERICK L.	9 Alsada Road, Nantasket Beach, Box 368

# Training School Faculty

ALLEN, GLADYS L.	Columbia Falls, Maine
BORCHERS, LOUISE H.	15 Clarence Avenue, Bridgewater
HOLLIS, ELIZABETH	25 Bates Avenue, South Weymouth
LINDQUIST, EVELYN R.	64 Grove Street, Thomaston, Conn.
MARKS, MARY L.	477 Webster Street, Rockland
ROGERS, GERTRUDE M.	49 South Street, Bridgewater
ROWLAND, GRACE V.	46 Pearl Street, Hyannis
SLEEPER, HELEN E.	South Thomaston, Maine
SMITH, GRACE E.	29 Park Street, Rockland
THOMPSON, CHARLOTTE H.	93 Charles Street, Fitchburg
TOWEY, CATHERINE D.	41 Parkway Place, Hyannis
WARNER, A. MABELLE	4 Summer Street, Merrimac

# Senior Directory

BATES, ROSE E.	411 South Street, Randolph
BEGLEY, MARY E.	Bedford Street, Lakeville
BENSON, HAZEL I.	Main Street, Brockton
BERGER, HILDA	102 Ash Street, Brockton
BEZANSON, CLYDE O.	32 Grove Street, Brockton
BREENE, BETTINA	299 Bay Street, Taunton
CAPIFERRI, MARY L.	329 Southern Artery, Quincy
CARROLL, CATHERINE M.	16 Water Street, Medford
CASS, JANE B.	588 Belmont Street, Brockton
CHATTERTON, GERTRUDE B.	1215 Riverside Avenue, Somerset
CLIFTON, L. AVIS	79 Roosevelt Avenue, Somerset
CONDON, JEAN F.	23 Roosevelt Road, Weymouth
COSTA, ALDA M.	Hale Street, Bridgewater
DONOHUE, ESTHER E.	60 Columbus Avenue, North Easton
DRISCOLL, CLAIRE	1905 Columbus Avenue, Boston
DUTRA, THEDA W.	93 Plymouth Street, Middleboro
EMERSON, CLAIRE	94 Beacon Street, Hyde Park
GARRITY, ADRIENNE M.	18 Walker Street, Weymouth
GEARY, M. ELEANOR	54 Harrison Avenue, Gloucester
GIFFORD, DOROTHY R.	82 Ford Street, Fairhaven
HALLISEY, ELIZABETH A.	63 Wheeler Avenue, Brockton
HARTWELL, CONSTANCE L.	Elm Street, East Pembroke
HOGAN, MADELINE L.	16 Norfolk Road, Holbrook
HOUGHTON, ANNE E.	83 Jackson Street, North Attleboro
HOWES, DOROTHY	Dennis
JENKINS, MELLICENT I.	8 Trefton Drive, East Braintree
JOY, SHIRLEY A.	59 Oak Street, Taunton
KENNEFICK, CONSTANCE M.	9 Highland Street, Gloucester
KOLENDA, HELEN R. F.	Richmond Street, Brockton
KREMP, MARY L.	Wareham Road, Marion
LAMBERT, LOUISE F.	Jarves Street, Sandwich
LEAVITT, HANNAH	24 Highland Avenue, Haverhill
LUCAS, HELEN W.	115 Emory Street, Attleboro
LUCEY, PHYLLIS V.	371 Moraine Street, Brockton
MAGLIANO, CLEMENTINE	37 Porter Street, Brockton
MCCARTHY, MARY E.	124 Ford Street, Brockton
MCCROHAN, CATHERINE J.	236 Mt. Pleasant Street, New Bedford
MOIR, HELEN N.	Main Street, Marshfield Hills

MORRELL, FRANCES H.	291 Mechanic Street, Canton
MORTON, DOROTHY E.	250 Sandwich Road, Plymouth
MULLER, GERALDINE	691 Washington Street, South Braintree
MURRAY, REGINA M.	63 Orchard Street, Randolph
NICOLL, JEAN C.	28 Troy Street, Brockton
NOLAN, EDITH F.	35 Hollingsworth Avenue, Mattapan
NOYES, VINETA R.	455 Spring Street, West Bridgewater
OLENICK, MARY R.	262 Field Street, Brockton
PORTER, LORRAINE F.	114 Heath Street, Jamaica Plain
PRATT, MAIDA R.	209 North Main Street, West Bridgewater
RADCLIFFE, MARIAN E.	5 Wood Street, Plymouth
REED, MADYLYN A.	11 Russo Street, Hyannis
REILLY, LOUISE C.	30 Spring Hill Avenue, Bridgewater
REYNOLDS, ANNE V.	31 Rogers Street, Quincy
SHANLEY, VIRGINIA I.	Branch Street, Brant Rock
SNOW, ELIZABETH J.	R. F. D., Carver
SULLIVAN, MARY T.	411 Montello Street, Brockton
SUNDELIN, SYLVIA	Centre Street, West Barnstable
TWOMEY, MARY C.	1106 Main Street, South Weymouth
VICKERY, MARTHA	76 Sandwich Street, Plymouth
WATERMAN, MARILYNN F.	39 Ball Avenue, Bridgewater
WATTERS, E. FYRNE	South Street, Bridgewater
WELLS, DOROTHY E.	54 Jaffrey Street, Weymouth Heights
WHITE, MEREDITH F.	82 West Street, Elmwood
WHITING, HELEN	Vernon Street, Plymouth

## Class of 1946

ACEBO, SINFOROSA G.	24 Grossman Street, Brockton
ALFIERI, GERALDINE F.	38 Brett Street, Brockton
ALMEIDA, EVELYN	57 Clinton Street, Fall River
ANESTES, SEVA	261 Ocean Street, Hyannis
BATES, BARBARA L.	309 King Street, Cohasset
BELCHER, DOROTHY C.	118 High Street, East Weymouth
BOLTZ, ADELE C.	77 School Street, Braintree
BROOKS, DOROTHY L.	242 Homer Street, Newton Centre
BURNS, FRANCES M.	264 Elmwood Avenue, Wollaston
CAPIFERRI, MARGARET E.	329 Southern Artery, Quincy
CATE, ELIZABETH M.	71 Marion Road, Watertown



CHAFFIN, VIVIAN R.	108 Church Street, Mansfield
CHAMBERLIN, VIRGINIA D.	76 North Ash Street, Brockton
CHAPIN, ILSA C.	28 Larkspur Street, Springfield
CHATTERTON, EUNICE B.	1215 Riverside Avenue, Somerset
CHRISTOFORI, DOROTHY L.	29 Ball Avenue, Bridgewater
CLAYMAN, PHYLLIS R.	37 Brookledge Street, Roxbury
CONDON, MARY E.	278 Moraine Street, Brockton
CONNELL, DOROTHEA L.	7 Abbey Street, Randolph
CONNORS, MARY ELIZABETH	517 Cottage Street, New Bedford
CUNNINGHAM, GERALDINE R.	149 Liberty Street, Randolph
CURLEY, MARY E.	11 Ardmore Street, East Braintree
DAY, FLORENCE A.	25 Grove Street, Bridgewater
DOWNTON, MILDRED L.	108 Massachusetts Avenue, Springfield
ELLISON, MARY A.	158 Bonney Street, New Bedford
GALLAGHER, SHIRLEY	14 Crocker Street, Medford
GLEASON, CANDACE H.	88 Lewis Bay Road, Hyannis
GODFREY, VIRGINIA C.	72 Lincoln Street, Greenfield
GUZZI, MADELYN R.	34 Gibson Street, Malden
HACKING, MILDRED E.	90 Woodlawn Street, New Bedford
HAMLETT, ELIZABETH E.	Athol
HOMEN, LOUISE L.	11 O'Conner Street, Taunton
HOWARD, MARTHA S.	15 Pearl Street, Middleboro
JACKSON, ELAINE E.	Green Lane, Edgartown
KANE, BARBARA	475 Liberty Street, Rockland
KENNEDY, MARY E.	15 Strafford Street, Plymouth
KLIMM, ELENORE L.	Pleasant Street, Hyannis
KOHLER, EUNICE M.	1121 Main Street, South Weymouth
LINTON, ARLEEN M.	Plymouth Street, North Carver
LOUGEE, VIRGINIA H.	Pleasant Street, Millis
LOVELL, VIVIAN J.	28 Stanley Street, North Weymouth
MACK, MARIE A.	35 Snell Street, Holbrook
MACKENZIE, BARBARA G.	115 Sommer Road, Brookline
MACGOWN, JANE	295 Center Avenue, North Abington
MACOMBER, CONSTANCE W.	187 County Street, Taunton
MADDOX, PRISCILLA E.	104 Metropolitan Avenue, Roslindale
MANN, ALTANA B.	11 Allen Avenue, Westfield
MASON, MABEL E.	Locust Street, Swansea
MATTHEWS, EDITH E.	103 Middleboro Road, West Wareham
MAZER, BERNISS G.	22 York Terrace, Brookline
MITCHELL, ROSELLA	Jefferson Shores, Buzzards Bay
MOONEY, MARJORIE M.	66 Raymond Street, East Weymouth
MURCHIE, JEANETTE	3 Lincoln Street, Somerville
MURRILL, CATHERINE E.	538 Market Street, Rockland
MUTHER, BARBARA	216 Pleasant Street, Newton Centre
O'BYRNE, ELEANOR M.	386 Pleasant Street, Brockton
PECK, JEAN E.	Olney Street, Seekonk
PELTZ, ELSIE N.	4557 Acushnet Avenue, New Bedford
QUERZE, LOIS	Sagamore

RING, DOROTHEA E.	57 North Central Street, East Bridgewater
ROSENBLATT, ESTHER	16 Morse Street, Dorchester
RUSSELL, JANE W.	82 Stevens Road, Needham
SALVADOR, EVANGELINE D.	32 Roosevelt Avenue, East Bridgewater
SANFORD, HELEN E.	Main Street, Sandwich
SCHMIDT, PHYLLIS L.	86 Willard Street, New Bedford
SHEEHAN, EILEEN	62 Chancery Street, New Bedford
SHEEHAN, ELIZABETH	430 Main Street, Bridgewater
SIMPSON, PHYLLIS L.	9 Harrisson Avenue, Gloucester
SISSON, MARJORIE P.	56 Pleasant Street, Stoneham
SULLIVAN, ALICE A.	49 Monadnock Street, Dorchester
SULLIVAN, A. ROBERTA	4 Harding Avenue, Haverhill
SWEENEY, GRACE M.	18 Verplank Street, Albany, N. Y.
TOLMAN, MARJORIE H.	Church Street, Hanover
TOOMEY, ALICE M.	23 Drew Avenue, East Weymouth

## Class of 1947

ANDERSON, RUTH P.	25 Louis Street, Hyannis
ANDREWS, MARGARET	63 West Street, Whitman
ANGELEY, MARY A.	37 Center Avenue, Abington
AVERILL, CAROL C.	Base Point Way, Edgartown
BAUMBACH, HELEN R.	36 Nevyns Avenue, Longmeadow
BEAUMONT, LEO E.	Phinneys Lane, Centerville
BIGELOW, MARGARET G.	Evergreen Acres, Worthboro
BIGNELLI, LOUISE	28 East Merrimac Street, New Bedford
BOFFETTI, MARGARET	Box 223, Sagamore
BOLLES, CLAIRE B.	Heartbreak Road, Ipswich
BOWLER, JEAN C.	41 Ellison Park, Waltham
BURCHARD, JANICE C.	70 Broad Street, North Attleboro
BURNHAM, ROBERTA L.	55 Summer Street, Kingston
BURKE, MARGARET A.	225 East Street, East Walpole
CHASE, JUNE	Main Street, West Yarmouth
CLARK, CAROL H.	Center Street, East Dennis
COBB, MYRTLE C.	Camp Street, West Yarmouth
CONANT, LOUISE N.	55 Tanager Street, Arlington
COYNE, E. PATRICIA	Gibbs Avenue, Wareham
CRANE, JEAN E.	14 Springhill Avenue, Bridgewater
CUSHING, RUTH A.	East Grove Street, Middleboro
CUSTEAU, RITA L.	820 Lakeview Avenue, Lowell
DAVIDSON, HELEN M.	48 Rosemone Street, Boston
DOUGLASS, JEAN	Locust Street, Swansea
FINNEGAN, EILEEN M.	35 Lakeview Avenue, South Braintree
FORRED, WALTER A.	South Orleans Road, Orleans
FROIO, PATRICIA	45 Gifford Street, Brockton
GERSTEIN, GERTRUDE	31 Cherryvale Avenue, Springfield

GHILARDI, ANITA . . . . .	186 North Street, New Bedford
GLASER, MURIAL I. . . . .	77 Plymouth Street, Brockton
GRALTON, RUTH J. . . . .	155 Summer Street, Somerville
GRAVES, FROSTINE A. . . . .	55 South Street, Williamsburg
GUILBAULT, MARION L. . . . .	Turnpike Hill, Montague City
HANSON, ATHERLEEN J. . . . .	42 Waldo Street, Brockton
HARRIMAN, DOROTHY M. . . . .	Taunton Avenue, Dennis
HARRINGTON, BARBARA . . . . .	15 Chestnut Street, Natick
HASKELL, MARGUERITE A. . . . .	811 East Street, Dedham
HASKINS, ANNE . . . . .	652 Washington Street, Abington
HERMAN, JACK . . . . .	916 Crescent Street, Brockton
HUMMEL, JOAN E. . . . .	25 Federal Street, Springfield
JOSEPH, ALICE L. . . . .	Wellfleet
KAZANOVICZ, HELEN R. . . . .	35 Ellsworth Street, Worcester
KELLY, LENORE M. . . . .	43 Belcher Avenue, Brockton
KERR, ANNETTE . . . . .	341 Worth Avenue, North Abington
KILLORY, HELEN G. . . . .	6 George Road, Quincy
KVALE, KATHERINE . . . . .	56 Linden Place, Brookline
LAGARDE, ELIZABETH R. . . . .	216 Walnut Street, Stoughton
LAHTEINE, EDNA A. . . . .	Plum Street, West Barnstable
LAPPEN, MILDRED J. . . . .	87 Winthrop Street, Winthrop
LAWDAY, PHYLLIS C. . . . .	372 Port Street, Plymouth
LAWSON, ELDON C. . . . .	99 Carroll Avenue, Brockton
LEAVITT, THELMA E. . . . .	734 North Street, Randolph
LOPES, MARGARET A. . . . .	221 Middleboro Road, West Wareham
LOVELL, DORINDA S. . . . .	Hyannis Road, Barnstable
MACKIN, DOROTHY M. . . . .	19 Sherman Street, Brockton
McCORKLE, OTIS . . . . .	36 Thaxter Avenue, Abington
McCOSH, BETSEY . . . . .	Box 145, Manomet
McNAMARA, ANN E. . . . .	77 Franklin Street, Haverhill
MERRILL, DOROTHY . . . . .	43 Winthrop Street, North Abington
MONOHAN, MARGARET M. . . . .	140 Main Street, Wareham
MOORE, KAYTHRYN . . . . .	195 Pleasant Street, Bridgewater
MOORE, MARION P. . . . .	2 Preston Street, Worcester
MOREY, BEVERLY D. . . . .	Prospect Street, Mattapoisett
MURPHY, MARGARET T. . . . .	56 Stockman Street, Springfield
NICKERSON, MARTHA L. . . . .	Richardson Avenue, Attleboro
NOVICK, BERNICE J. . . . .	17 Bartlett Crescent, Brookline
OLSON, GLORIA C. . . . .	68 Granite Street, Melrose
OLSON, VIRGINIA C. . . . .	Vernon Street, Rockland
PACKER, ELSIE M. . . . .	Mill Street, Swansea
PAQUETTE, LUCILLE E. . . . .	214 South Main Street, Attleboro
PARSONS, HARRIETTE J. . . . .	22 Martin Avenue, Franklin
PARSONS, THELMA I. . . . .	471 Adams Street, North Abington
PECK, JEANNE M. . . . .	Pickville Road, Shelburne
PENTINEN, MIRIAM M. . . . .	Wellfleet
PERKINS, VIRGINIA G. . . . .	181 Longplain Road, Acushnet
POTTER, LOIS A. . . . .	West Main Street, Ware

RANDALL, PRISCILLA E.	131 Kensington Lane, Swampscott
REDGATE, ANN C.	38 Lawrence Street, Brockton
ROGERS, KATHERINE G.	School Street, Wellfleet
ROPER, ELIZABETH A.	17 Marion Avenue, Brockton
ROWELL, MURIEL L.	1039 Plymouth Avenue, Fall River
SAGER, SHIRLEY M.	96 Lincoln Street, Norwood
SCHLOSSTEIN, JEAN C.	East Main Street, Warren
SCOBLE, BARBARA F.	203 Washington Street, Islington
SHORTALL, PATRICIA E.	29 Pleasant Street, Braintree
SHUGRUE, BETTY ANN	19 Blossom Street, Bradford
SMARSH, HELEN	390 Bedford Street, Middleboro
SMIALEK, IRÈNE C.	338 Globe Street, Fall River
SOULE, KATHERINE F.	74 North Street, Middleboro
SULLIVAN, M. ELAINE	24 May Street, East Braintree
THATCHER, SHIRLEY W.	South Yarmouth
THEBERGE, GRACE	107 Sycamore Street, New Bedford
THIESING, MARGARET F.	10 Browne Road, Shrewsbury
WALSH, ANNA M.	43 Clarence Avenue, Bridgewater
WALSH, RUTH B.	43 Clarence Street, Bridgewater
WARREN, BARBARA H.	87 Groveland Street, Springfield
WEBSTER, JEANNE J.	155 Florence Road, Waltham
WERLIN, PHYLLIS D.	417 Central Street, Saugus
WICKLES, JEANNE M.	Main Street, Hatfield
WINKLE, NORA M.	Jerusalem Road, North Cohasset

## Class of 1948

ADAMS, DOROTHY Q.	10 Morrison Road, Hyannis
ALLEN, JANET F.	37 School Street, Hyannis
ANDERSON, JEANNE P.	14 Hamilton Road, Waltham
ARCHAMBAULT, HORTENSE E.	801 Broadway, Haverhill
BAILEY, MARGARET E.	45 Alpha Road, Dorchester
BARNES, HESTER M.	23 Oak Street, Fairhaven
BOCKUS, BETTY	249 Central Street, Stoneham
BOYDEN, PHYLLIS N.	45 South Street, East Bridgewater
BRIGGS, JANE F.	216 Main Street, Fairhaven
BRITTAIN, DOROTHY A.	331 Bedford Street, Whitman
BUCK, JANET S.	99 Dean Street, Mansfield
BURBANK, FRANCES S.	253 State Road, North Dartmouth
CALLAHAN, EILEEN M.	North Main Street, South Deerfield
CARROLL, JEANETTE T.	115 Bouve Avenue, Brockton
CASTANO, CONSTANCE M.	18 Huntington Street, Brockton
CHRISTIAN, M. LORRAINE	McCabe Avenue, Millis
COSTA, ALVARINA M.	18 Howland Street, South Dartmouth
CRONIN, MARY A.	5 Crows Lane, Hingham
CULLINANE, THERESE M.	17 Bird Street, East Walpole



DALEY, PAUL V.	11 Wildewood Road, Medford
DAVIS, DOROTHY R.	29 Payson Avenue, Dorchester
DAVIS, MARJORIE E.	628 Pleasant Street, Attleboro
DAVIS, SELMA C.	10 Shore Drive, Winthrop
DAY, IRENE E.	7 Alleyne Street, West Roxbury
DOLLIVER, LORRAINE V.	51 Marlboro Street, Wollaston
DOWNER, MILDRED E.	Centre Street, Dover
DUFTON, HELEN	Lakeville State Sanatorium
DUGGAN, MILDRED I.	103 Rockland Street, Canton
FARNSWORTH, ARDYS C.	North West Street, Feeding Hill
FARRELL, BARBARA A.	199 Samoset Avenue, Allerton
FLECK, MARION L.	141 Cottage Street, Norwood
FLYNN, MARJORIE B.	72 Maple Street, South Hamilton
FULTON, HELEN E.	169 Main Street, South Hamilton
GALLIGAN, ELLEN C.	18 Tremont Street, New Bedford
GAYNOR, ARLENE P.	44 Maple Street, Randolph
GIBBS, ANNA E.	Old Plymouth Road, Sagamore
GILLIGAN, ELIZABETH	83 Burnap Street, Wilmington
GLOSTER, ANNA H.	29 Granite Street, Weymouth
GREEN, MARGARET I.	191 Glimrose Avenue, East Braintree
HANSEN, JANE	Main Street, North Hanover
HARPER, BARBARA B.	96 Beulah Street, Whitman
HAYES, R. NATALIE	171 Mason Street, Wollaston
HENRY, MARIE L.	36 Magoun Avenue, Medford
HILL, CAROL V.	Chace Road, East Freetown
HORRIGAN, ANN M.	17 Standish Road, Milton
HUGHES, JAMES F.	32 New Bedford Street, Hyde Park
JONES, CYNTHIA C.	Chase Street, West Harwich
JONES, PHYLLIS L.	Chase Street, West Harwich
KEEFE, ROSEMARY A.	377 Archer Street, Fall River
KING, HOPE M.	West Harwich
KOMICH, EDITH A.	32 Mt. Pleasant Street, Randolph
LALIBERTE, LORRAINE E.	53 Moraine Street, Brockton
LEWIS, DOROTHY M.	11 Moulton Street, Randolph
LITTLEFIELD, JEAN	147 School Street, Bryantville
LOSSONE, BARBARA H.	16 Myrtle Street, Melrose
LOUGHMAN, EILEEN E.	22 Rowner Avenue, Dorchester
LUPION, JUNE G.	63 Sunset Avenue, West Bridgewater
LYMAN, VIRGINIA A.	777 South Street, Bridgewater
LYNCH, RITA E.	206 Main Street, Bridgewater
MACKINNON, BENENA	42 Dahata Street, Dorchester
MACLENNAN, MARJORIE	17 Fells Road, Stoneham
MACPHERSON, VIRGINIA A.	80 Woodlawn Street, Springfield
MALINA, SARA	76 Intervale Street, Roxbury
MANCHESTER, EUNICE	40 Chestnut Street, South Dartmouth
MARKS, MEREDITH T.	37 Keith Avenue, Brockton
MCDONOUGH, CORINNE	Causeway Road, Vineyard Haven
MCGOWAN, MARIE C.	40 Broad Street, North Attleboro

McGRATH, CATHERINE L.	77 Billings Street, Sharon
MILLS, ERNESTINE E.	29 Mayflower Street, Plymouth
MISHARA, MARILYN M.	97 Wellington Hill Street, Mattapan
MORIARTY, RUTH F.	50 Pearl Street, North Abington
MOYNIHAN, E. JEANNE	42 Arch Street, North Abington
MULQUEENY, FRANCES V.	11 Nelson Avenue, Quincy
O'NEIL, LOUISE M.	28 Norfolk Road, Randolph
PAUL, MARIE V.	12 Zamora Court, Jamaica Plain
PAYNE, LOUISE E.	42 Middlesex Street, Boston
PHILLIPS, MARJORIE H.	59 Freedom Street, Fall River
POTTERN, ESTELLE A.	17 Brookline Avenue, Springfield
POWERS, GENEVIEVE M.	70 William Street, Bradford
RADZUKINAS, GENEVIEVE R.	108 South Pleasant Street, Bradford
ROCHE, CAROLINE F.	87 Hazard Street, New Bedford
ROUD, EDITH L.	514 Howard Street, Brookline
ROWE, PRISCILLA A.	17 Pleasant Street, Plymouth
RUDOLPH, ANNIE	600 Plymouth Street, Whitman
SEDGWICK, SHIRLEY H.	162 Weir Street, Taunton
SHAPIRO, HAZEL D.	28 Abbot Street, Dorchester
SHAPIRO, MIRIAM J.	34 Salem Street, Springfield
SHEA, GRACE H.	47 Caren Street, Springfield
SHERMAN, HELEN W.	2 Willard Place, Plymouth
SHIPMAN, VIRGINIA P.	18 Allerton Street, Plymouth
SOUZA, LOUISE T.	618 Cottage Street, New Bedford
STRANGER, MARILYN H.	Main Street, West Newburg
SULLIVAN, MARY R.	52 Forest Street, Fall River
SULLIVAN, MARY T.	44 Pearl Street, New Bedford
TALBOT, BARBARA M.	Washington Avenue, Somerset Centre
TASSINARI, LILLIAN M.	83 Main Street, Kingston
THOMPSON, DOROTHY N.	47 Main Street, Quincy
TORRES, ADELE M.	Main Street, Dighton
TRIPP, HANNAH F.	60 State Street, New Bedford
TUCKER, ELINOR G.	120 Beal Avenue, Whitman
VLAAS, MARJORIE L.	92 Highland Avenue, Wollaston
WALSH, MARTHA T.	79 Border Street, Dedham
WEINSTEIN, DAVID	33 Wildwood Street, Dorchester
WILSON, LILLIAN M.	187 Lake Street, Acushnet
WISOTSKY, MARY	355 School Street, Stoughton
ZUMAS, MADELINE	17 Chestnut Street, Stoughton

---

*Compliments of*  
**STENGEL'S INCORPORATED**  
**4 Central Square                      Bridgewater**

---

**THE CARY TEACHERS'  
AGENCY OF BOSTON**  
  
Rose Estelle Bradbury, Manager  
  
*Member of National Association of  
Teachers' Agencies*  
  
**14 Beacon Street, Boston 8, Massachusetts**

---

*Compliments of*  
  
**SNOW'S FRIENDLY STORE**

**ROY BEAUTY SHOP**  
  
Specializing in  
  
Permanent Waving - Razor Cutting  
  
**303 Belmont Street, Brockton**

---

**WILLIAM C. PROPHETT**  
  
**UNDERTAKER**  
  
**98 Bedford Street**  
  
**Bridgewater, Massachusetts**

---

**DAIKER NURSERIES AND  
FLOWER SHOP**  
  
**977 Summer Street, Bridgewater**  
  
*Member of Florist Telegraph Delivery Assoc.*

---

**EDGAR'S**  
  
**195 North Main Street**  
  
**Brockton, Massachusetts**

---

---

### DORR'S PRINT SHOP

Dependable Printing Service

Printers of the *Campus Comment*

Bridgewater

Massachusetts

### BRADY'S DINER

Wishes good luck and success  
to the Graduating Class of 1945

---

*Compliments of*

### PORTER'S

Junior - Misses - Women's

APPAREL

227-229 Main Street

Brockton

---

### HYMAN'S FURNITURE CO.

Complete Home Furnishings

Bridgewater, Mass.

Hyman T. Gotshalk, *Prop.*

---

### M. H. CHURCHILL

Headquarters for Gordon Hosiery

Central Square

Bridgewater

---

### MOORE'S DRUG STORE

Best of Luck

To All the 1945 Graduates

---

*Compliments of a Friend*

---





*Compliments of*

C K. GROUSE CO.

North Attleboro, Massachusetts

---

**CAPITOL THEATRE BRIDGEWATER**

Up to the minute Motion Picture Entertainment

For the Entire Family

*Sundays and Holidays Continuous*

Matinees daily at 2.00 p.m.

Evenings from 6.45 to 11.00

---

**BRIDGEWATER SAVINGS BANK**

**Bridgewater, Massachusetts**

A Mutual Savings Bank

Incorporated 1872

---

---

## THE FIELD COMPANY

Simpson Spring Beverages

Confectionery at Wholesale

290 Montello Street                      Brockton

---

## EASTERN GRAIN COMPANY

Bridgewater, Mass.

Distributor of Wirthmore Feeds

Use Wirthmore Feeds for Best Results

---

## THE FISK TEACHERS' AGENCIES

Boston Office - 120 Boylston Street

*Member of National Association of  
Teachers' Agencies*

---

To the Graduating Class

Congratulations and Best Wishes for the  
Future

## CENTRAL SQUARE PHARMACY

*The Rexall Store*

Bridgewater                      Massachusetts

---

Marjorie P. Ticknor

and

Louise H. Essery

*Managers*

---

## SUCCESS

in your first position is essential to your  
future. Let us help you select the right  
place.

*Reed Teachers' Agency*

120 Boylston Street                      Boston

---

## The Grace M. Abbott Teachers' Agency

120 Boylston Street

Boston, Mass.

GRACE M. ABBOTT, *Manager*

*Member of National Association of Teachers Agencies*

---

















