



Bridgewater State University

## Virtual Commons - Bridgewater State University

---

Bridgewater State Yearbooks

Journals and Campus Publications

---

1941

### Alpha [Yearbook] 1941

Bridgewater State Teachers College

Follow this and additional works at: <https://vc.bridgew.edu/yearbooks>



Part of the [Education Commons](#), and the [Social History Commons](#)

---

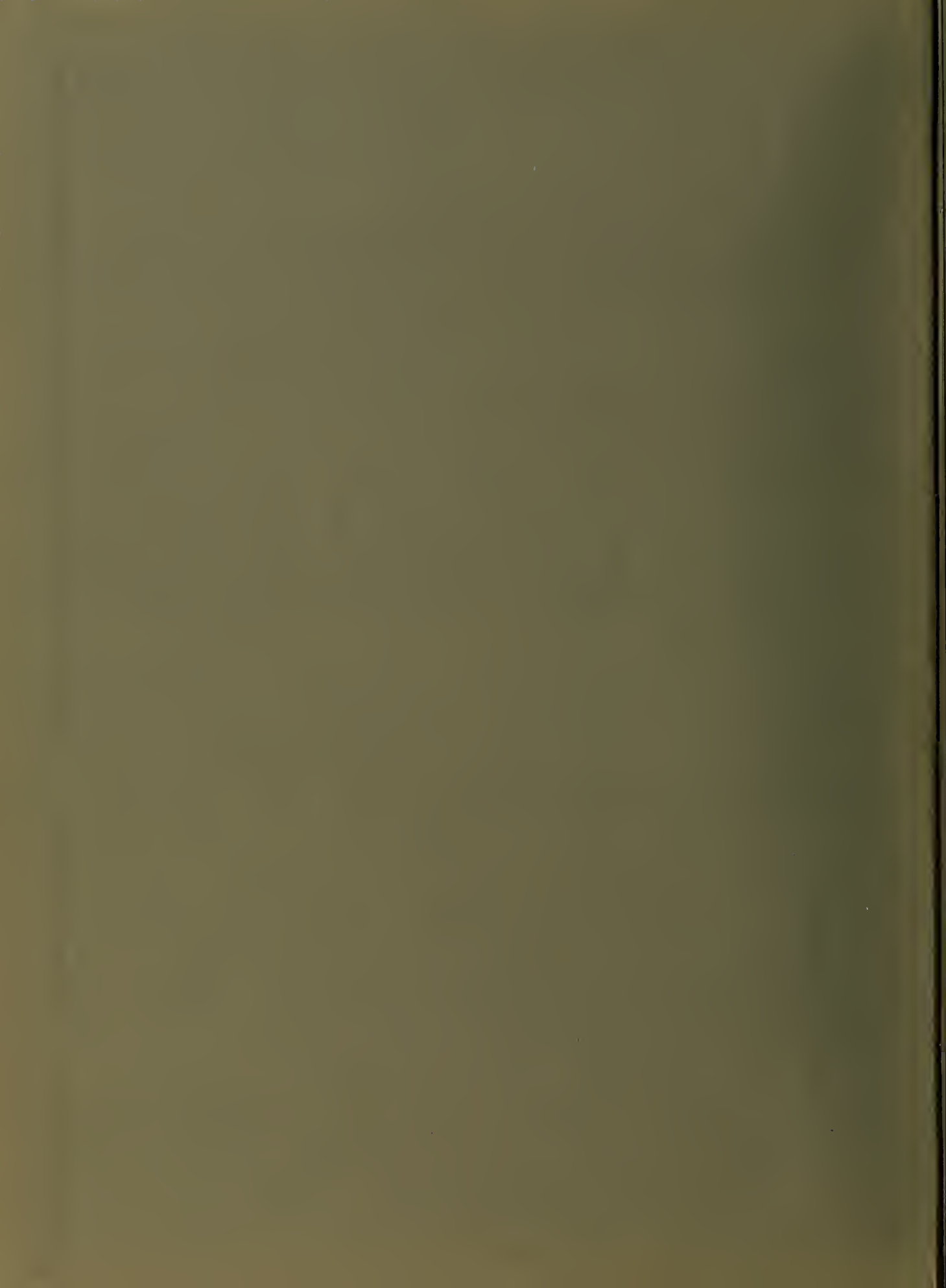
#### Recommended Citation

Bridgewater State Teachers College. (1941). *Alpha [Yearbook] 1941*.

Retrieved from: <https://vc.bridgew.edu/yearbooks/37>

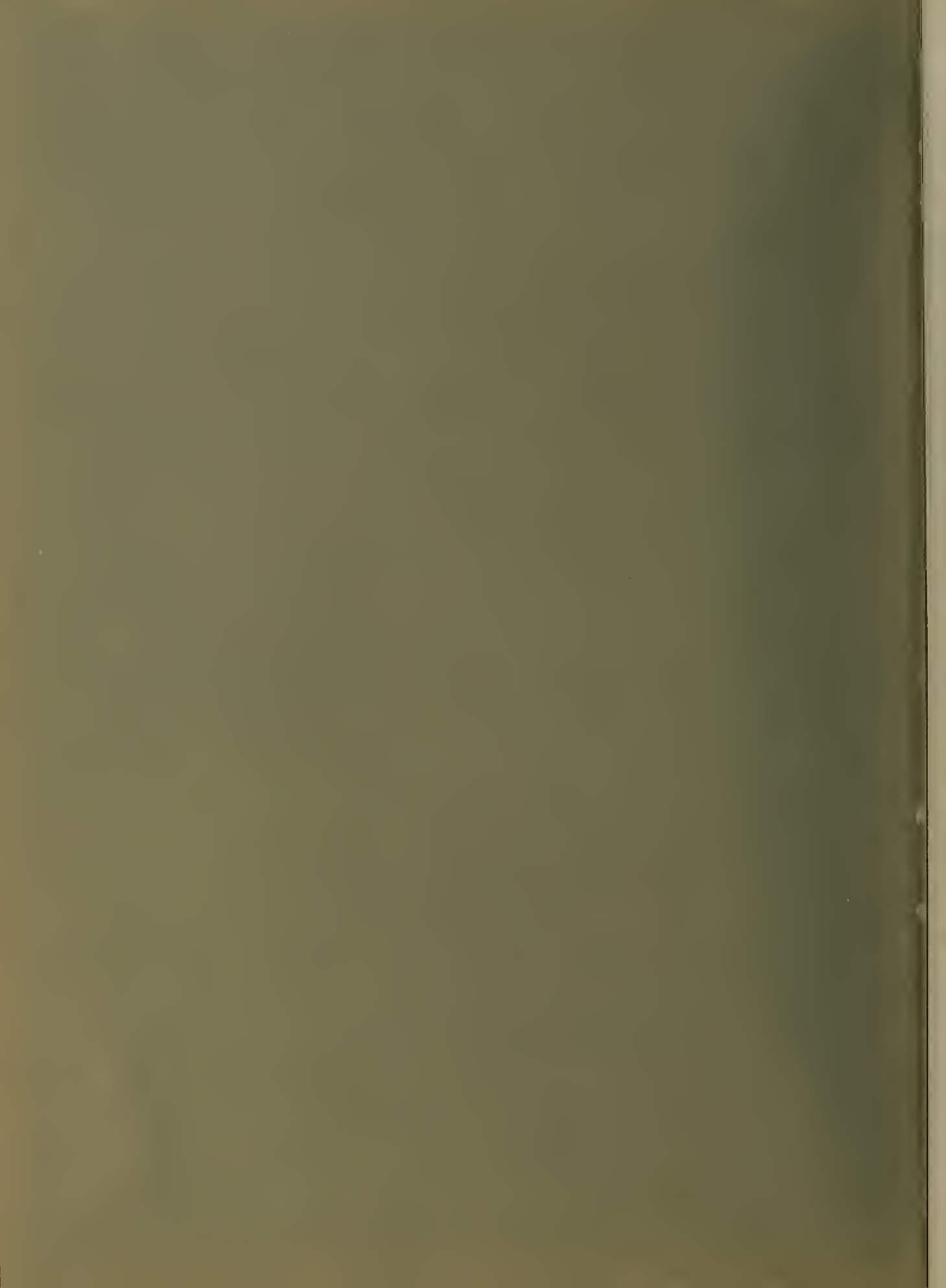
This item is available as part of Virtual Commons, the open-access institutional repository of Bridgewater State University, Bridgewater, Massachusetts.





1941

*Archives*







JOHN J. KELLY

PRESIDENT

# ALPHA

1941

PUBLISHED BY THE  
STUDENTS  
OF THE  
STATE TEACHERS COLLEGE  
BRIDGEWATER, MASSACHUSETTS

VOLUME NO.

XLIII



# Dedication

To Cora M. Vining, assistant librarian at Bridgewater from 1928 to 1940, we dedicate our yearbook as a measure of our appreciation of valuable service faithfully rendered.



CORA M. VINING

# To the Seniors

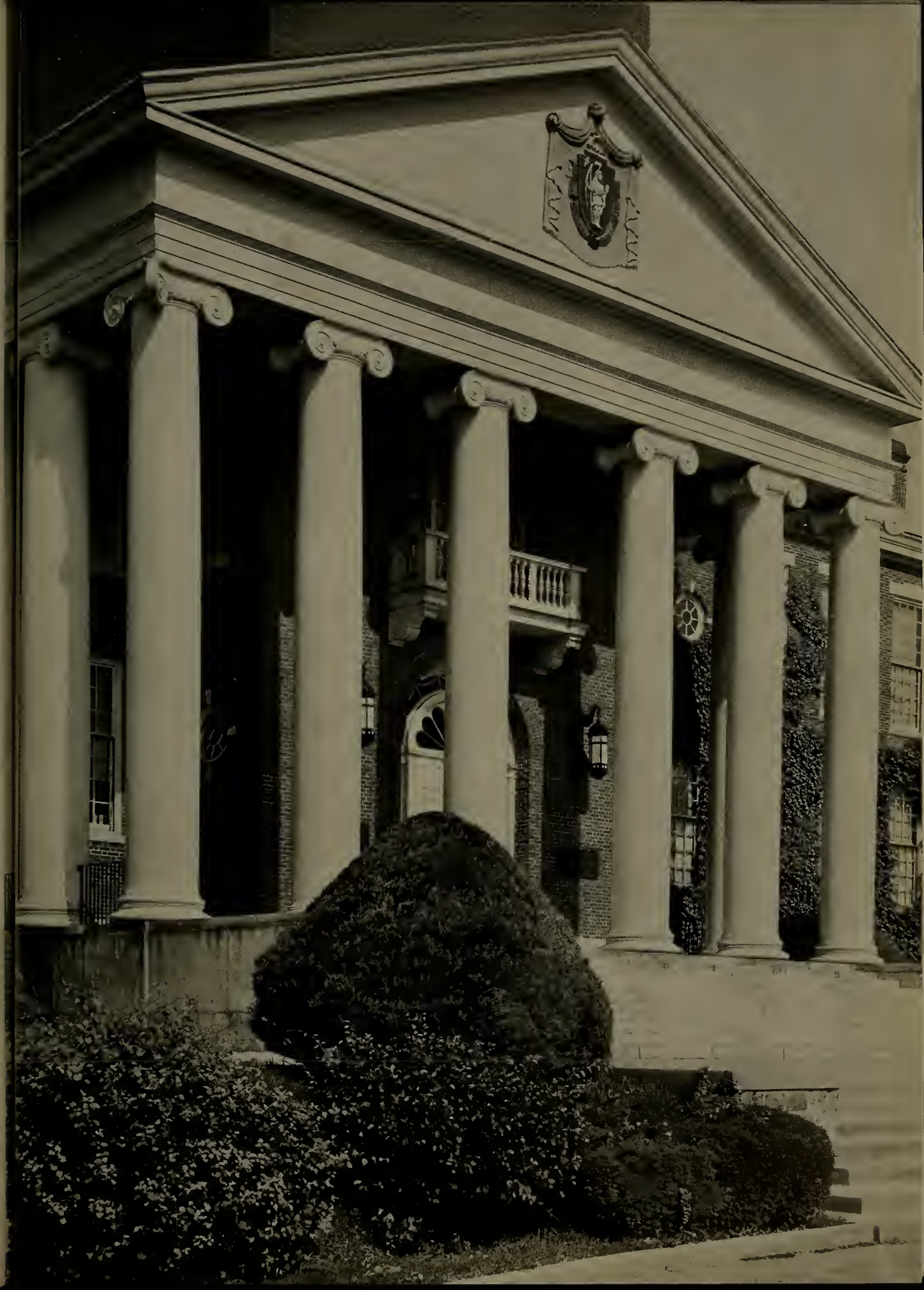
The invention of the alphabet was the greatest cultural advance of mankind, for not until man had mastered the art of getting the sounds of words into recorded symbols could he communicate his thoughts and feelings to men beyond the reach of his voice. Primitive picture-writing was useful for recording facts: so many enemies killed, a certain number of animals taken in the hunt; but in order to preserve for all time an adventure of the spirit as it might be told by one man to another, an alphabet was essential. Mastery of the alphabet led to the production of books, although before the fifteenth century the ability to read them or to write them was limited to a few learned men. Books were all lettered by hand, a laborious process which made them infinitely precious. Their great spiritual heritage was not for the mass of people.

Next to the alphabet, printing is probably mankind's greatest achievement. The invention of printing caused a great increase in the number of books and a consequent increase in the ability to read them. Through the printed page recorded thought can be communicated everywhere and forever. Books are more than depositories for facts. Books contain the spiritual adventures of the men who wrote them. Man today is heir to all the thought of centuries. He need not begin his life in the pre-historic cave—he may start from yesterday.

In turbulent periods of history when true and life-giving ideas have often been suppressed, men have recorded their experiences and convictions on the printed page which has protected and preserved the kindling flame of their spirits. The keeper of books has the duty of preservation and interpretation of this spiritual heritage of the past; he is responsible for making this heritage available to all mankind. The keeper of books who realizes the significance of his guardianship is a potent force for democracy.

Cora M. Vining.





# Class Ode

The columns standing straight and tall,  
The vines enlivening the wall,  
The beacon burning through the night,  
And shining from its tower height,—

For all is beauty we have known  
And, knowing it, have richer grown.  
The memories we all hold dear,  
The loyalty of friends sincere,

The trials and tasks we gladly met,  
The noble standards you have set,—  
For all is love that we have known  
And, knowing, it have richer grown.

Laura Von Bergen '41

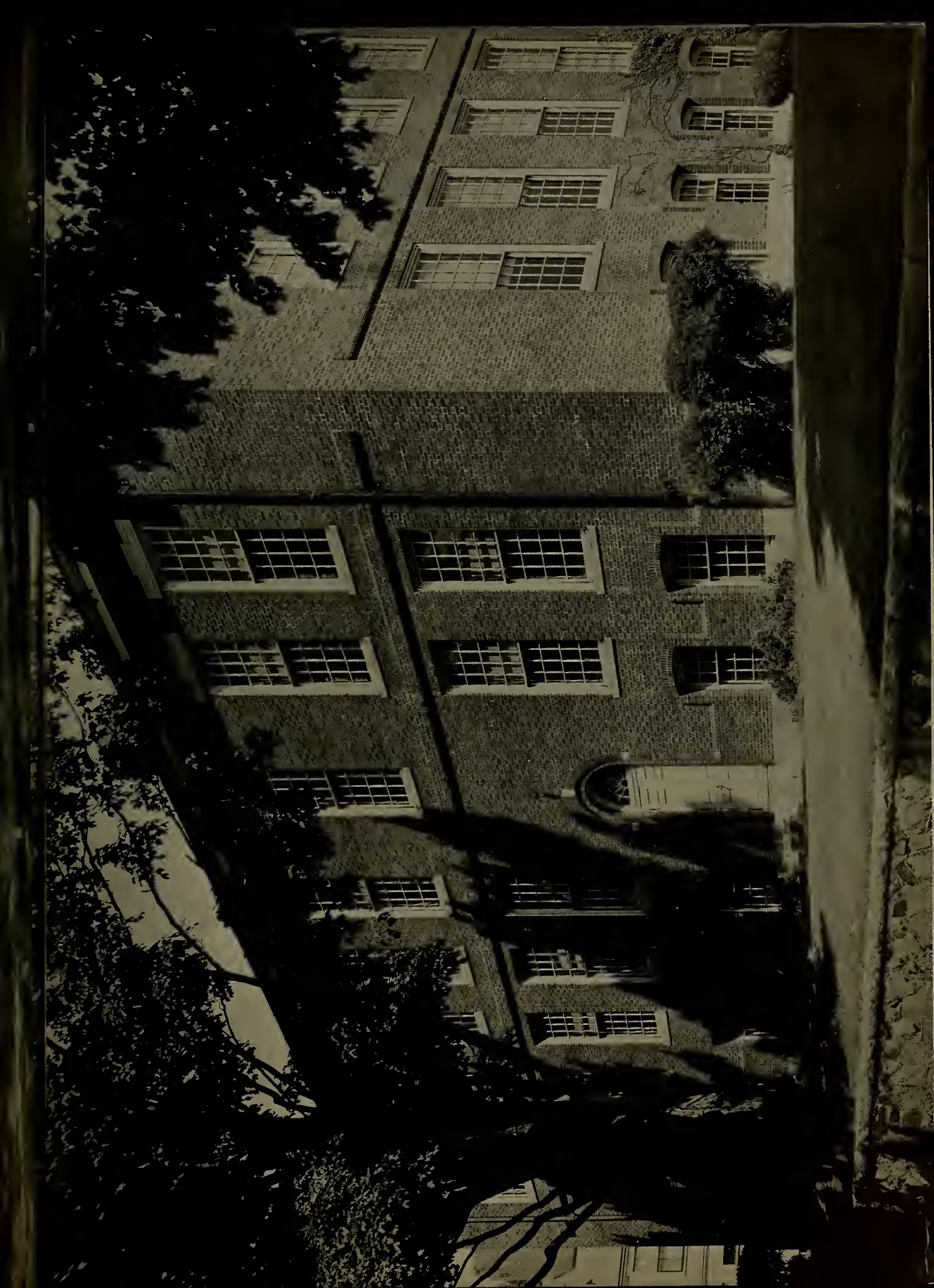
















## Foreword

We have just lived through the one hundred first year of the existence of this college, and will be graduated, not in the banner-filled air of last June, but on a quiet campus, with all eyes looking into this second century.

Our class, having had the opportunity of starting this next hundred years on the way, fully realizes the heritage which it has shared for four years, and to which it hopes it has added.

## Appreciation

The Alpha Board and the seniors wish to thank all those who aided in the production of the 1941 yearbook.

We are especially indebted to:

Miss Pope, for her invaluable assistance in financial and social matters;  
Miss Nye, for steadying us through the sands of composition and arrangement;

Miss Triggs, our new advisor, who has so ably directed the activities of the Alpha Board this year, for her calm and welcomed assistance;

Miss Davis, for her expert advice in business affairs, and to  
Dr. Maxwell, for so willingly guiding us in technical problems.



# Faculty



JOSEPH I. ARNOLD  
Columbia University, M.A.  
Harvard University, Ph.D.  
*Sociology, History, Philosophy of  
Education*



EDITH H. BRADFORD  
Middlebury College, M.A.  
Paris, Harvard University  
*French*



MARY ISABEL CALDWELL  
New York University, M.A.  
Boston University  
*Physical Education*



JULIA C. CARTER  
New York State Library School  
Columbia School of Library Service  
*Head Librarian, Library Courses*



JOHN L. DAVOREN  
Emerson College, B.L.I.  
Boston University  
*Literature*

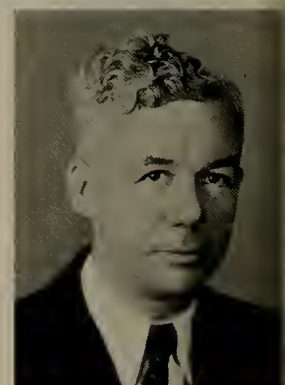
LOIS L. DECKER  
New York University, M.A.  
Boston University  
*Supervisor of Physical Education*



CHARLES E. DONER  
Zanerian College  
Denison University  
*Supervisor of Penmanship*



GEORGE H. DURGIN  
Harvard University, A.B., Ed.M  
*Mathematics, Economics*



E. IRENE GRAVES  
Columbia University, M.A.  
Cornell University  
*Biological Sciences*



# 1941



M. KATHARINE HILL  
Emerson College, B.L.I.  
Harvard University  
*Speech, Literature*



PAUL HUFFINGTON  
Clark University, A.M.  
University of Chicago  
*Geography, Geology, Climatology*



BRENELLE HUNT  
Harvard University  
Columbia University  
*Psychology, Educational Measurements*



OLIVE H. LOVETT  
Columbia University  
Harvard University, Ed.M.  
*English, Journalism*



RUTH I. LOW  
New England Conservatory  
Gallishaw School of Writing  
*English, Dramatics, Spoken English*



IVA V. LUTZ  
Columbia University, B.S., A.M.  
Harvard University  
*Psychology, Classroom Techniques*



MARIE P. MAHONEY  
Clark University, A.M.  
Harvard University  
*History, Government*



WILLIAM A. MCGURREN  
Holy Cross, B.A.  
Clark University  
*Physical Science, Chemistry*



FREDERICK A. MEIER  
Boston College, B.S., M.S.  
Boston University  
*Physical Education, Biological Sciences*





DOROTHY NUTTER  
 Mass. School of Art, B.S.Ed.  
 George Peabody College for Teachers, M.A.  
*Art, History of Art*



PRISCILLA M. NYE  
 International School of Art  
 Mass. School of Art, B.S.  
*Supervisor of Art*



S. ELIZABETH POPE  
 Framingham  
 Columbia University, B.S., M.A.  
*Dean of Women*



FRIEDA RAND  
 Mount Holyoke, A.B.  
 New England Conservatory of Music  
*Supervisor of Music*



MARY V. SMITH  
 Boston University, B.S., Ed.M.  
 Harvard University, Ed.M.  
*History*

LOUIS C. STEARNS  
 Bussey Institute, Harvard  
*College Greenhouse*



MARY M. TRIGGS  
 Simmons College, B.S.  
*Assistant Librarian*



BALFOUR S. TYNDALL  
 University of Maine, B.A.  
 Harvard University, Ed.M.  
*Physics, Geography*



GLADYS L. ALLEN  
 Machias Normal School  
 Farmington Normal School  
*Grade 2*



LOUISE H. BORCHERS  
 Fitchburg Normal School  
 Boston University, B.S., M.A.  
*Grades 4 and 5*





EVELYN R. LINDQUIST  
 Bridgewater, B.S. Ed.  
 Boston University  
 Grade 6



HELEN E. SLEEPER  
 Castine Normal School  
 Boston University  
 Grade 3



NEVA I. LOCKWOOD  
 Bridgewater Normal School  
 Boston University, B.S.  
 Grade 6



GRACE E. SMITH  
 Symonds Kindergarten School  
 Boston University  
 Grade 1



MARY L. MARKS  
 Wheelock School  
 Boston University  
 Kindergarten



CHARLOTTE H. THOMPSON  
 Fitchburg Normal School  
 Columbia University, B.S.  
 Grades 2 and 3



GRACE RIDDELL  
 Worcester Teachers College, B.S.Ed.  
 Boston University  
 Grade 4

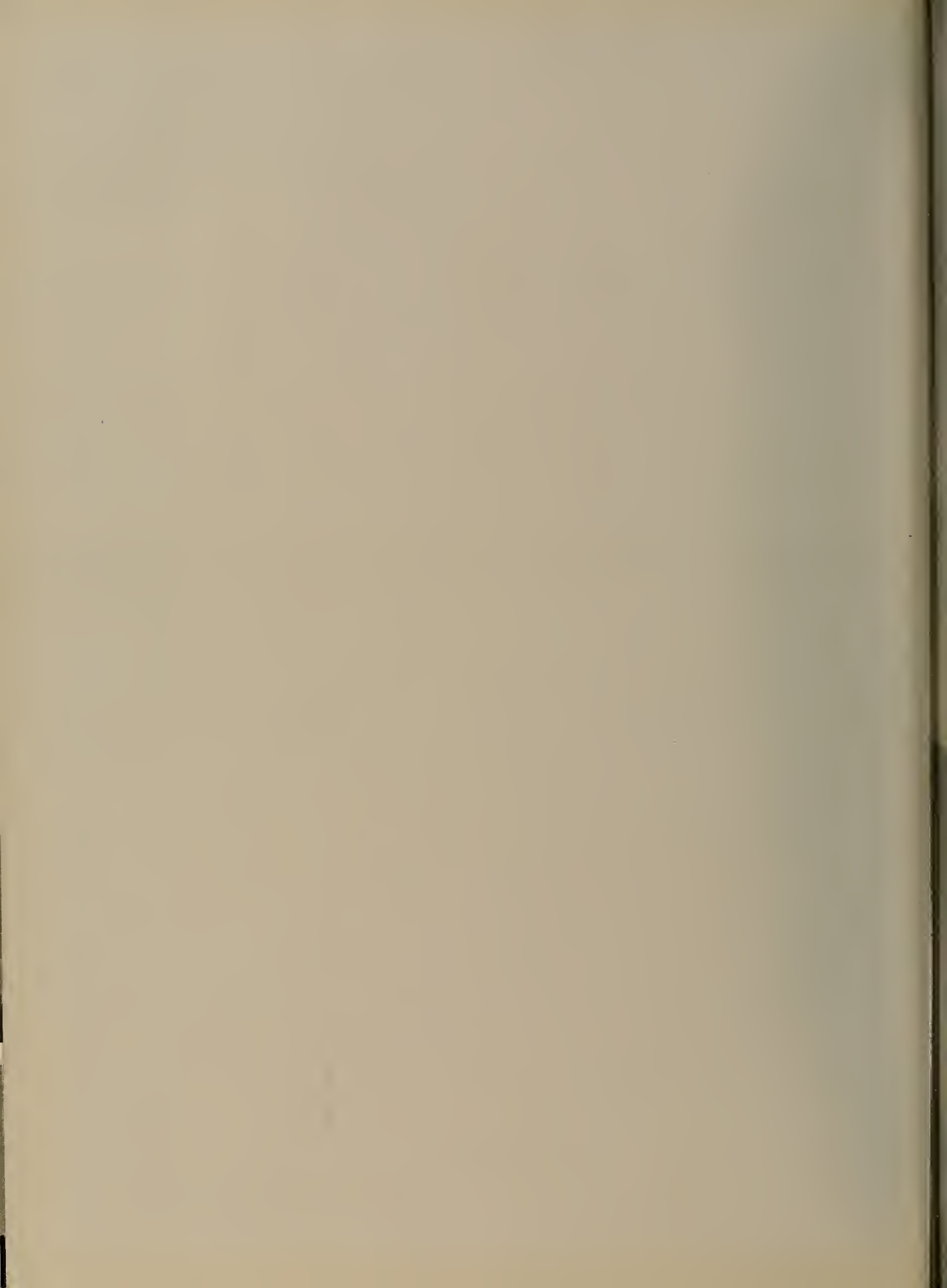


A. MABELLE WARNER  
 Salem Normal School  
 Columbia University  
 Grade 5



GERTRUDE M. ROGERS  
 Columbia University  
 Boston University, B.S.  
 Grade .1

CLEMENT C. MAXWELL  
 Holy Cross, A.B.  
 Fordham University, A.M., Ph.D.  
 Literature



classes

s

s

e

s







## AMELIA ACEBO

Quincy

*Glee Club 2, 3, 4; Librarian of Glee Club 3; Second Vice-President of Glee Club 4; German Club 1, 2, 3, 4; Director of German Club 3; Mixed Choir 4.*

This shy little miss from Quincy has made a very special place for herself in our class. One of the best "refreshment" workers German Club has yet found, Amelia is always willing to pitch in and help. Few know it but Amelia has a Spanish background, and if you can get her started, she has a sense of humor, unsuspected by most of her classmates. A good teacher, Amelia likes the little ones of the first grade, but whatever the grade, she makes music one of her main interests.



## ILMI ANDERSON

Wareham

*French Club 1, 2, 3, 4; First Vice President of French Club 2; Second Vice President 3; Secretary 4.*

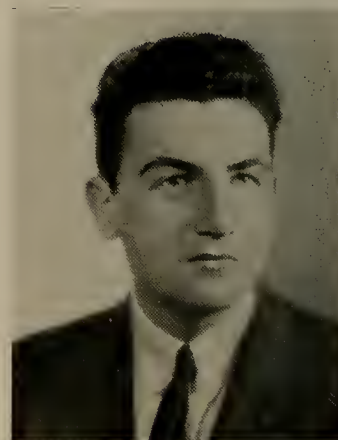
As one of our outstanding blondes, Ilmi has always been studious, and yet active socially. She is a very prominent member of French Club, and was always rushing around to get her job done quickly and efficiently. Even though her commuting has been a problem, she has never allowed it to interfere with her numerous college activities.

## ARTHUR APPLEBAUM

Dorchester

*Alpha Art Staff 1, 2; Dramatic Club 1, 2, 3, 4; Baseball 3, 4; Men's Club 1, 2, 3, 4; Campus Comment 2, 3; Science Club 2, 3, 4.*

Frank and impulsive, "Aps" sometimes shocks people, but those who know him have seen beneath the exterior. His is a nature of rich struggling emotions, of generosity, of sincerity. There is something in him, too, — a deep feeling and love for music, poetry and drama. Yet, more than the ability to appreciate the beautiful, — he has the ability to create it.



## MELVIN BACKMAN

Lynn

*Topics of Day 4; Men's Athletic Association 1, 2, 3, 4.*

Only few of us can penetrate the cold reticence of a clever man. Underneath the slight, "soigne" demon who frequently enlivened Dr. Arnold's classes with his ardent philosophy, there lurked a witty and unselfish dreamer. Mel is a sober idealist in a Beelzebub mask.

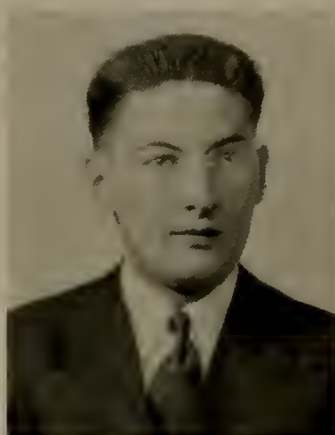


## HENRY BARBER

Pittsfield

*Camera Club 1, 2, President 3, 4; Men's Athletic Association 1, Treasurer 2, 3, 4; Campus Comment 1, 2; Newman Club 1; Science Club 2, 3, 4; Business Manager Alpha 4; Baseball Manager 3; Tennis Team 3, 4.*

H. J. is a versatile boy; efficient enough to have a finger in every proceeding, inefficient enough to do a good job at all of them. No grind, despite his good marks, Bud reserves about two hours a week for study — from one to three some quiet morning. When genetic patterns evolve a specimen as unbigoted, as unaffected, and as generous as the Pittsfield panther, we'd like to be there at the epiphany.



## LAWRENCE BERCH

Mattapan

*Men's Athletic Association 1, 2, 3, 4; Dramatic Club 1, 2, 3, 4; Vice President 4; Men's Club 1, 2, 3, 4.*

He's that tall quiet blonde who reads "Lil Abner" in the library, who wisely sleeps while professors talk, and who occasionally emerges to take over the romantic leads in the school plays. A good head, even temper, retiring nature, — that's Larry. There is more in him than people suspect. Some day he will surprise not only them but himself.



## GEORGE BORGES

Dighton

*Men's Athletic Association 1, 2, 3, 4; Newman Club 1, 2, 3, 4; Dramatic Club 2, 3, 4.*

George is one of our most versatile actors, as the dramatics class will readily testify, — feminine roles or character roles, it made no difference to George. Possessing a pleasant and amiable nature, and an even, unruffled temper, George has quietly won the friendship of all.

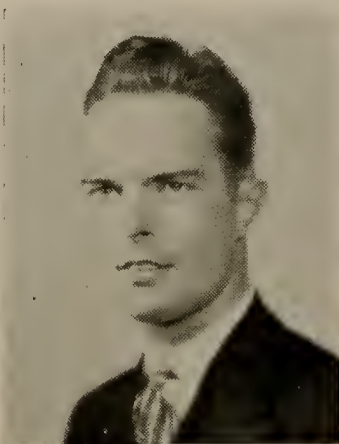


## MARY BRIGIDA

Plymouth

*Day Student Council 1, 2, 3; S. C. A. Representative 1; Dean's Council 2, 3; W. A. A. Director of Basketball 3; Pres. W. A. A. 4.*

Good sportsmanship is the outstanding characteristic of Bridge, both socially and athletically. Her vitality is shown on the gymn floor, hockey field, at sport conferences, and in all social groups. Dark flashing eyes, jet hair, a sunny disposition, (the key to her popularity) all truly enhance her pep, vigor.

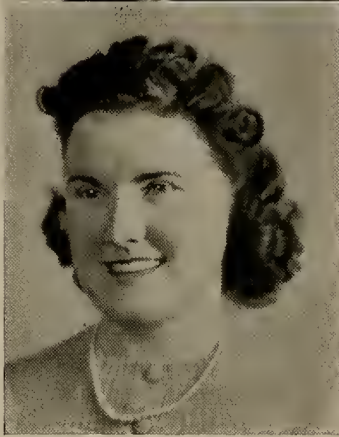


## WILLIAM BRODERICK

Bridgewater

*Men's Athletic Association 1, 2, 3, 4; Men's Club 1, 2, 3, 4; Newman Club 1, 2, 3; Captain of Baseball 4.*

Here's one fellow without the least trace of vanity. Taciturn, friendly, generous, Bill is one of the most popular men of the senior class, and by the way, Bill's the most consistent hitter on the baseball team. If any fault is to be found with him, it's that his opinion of himself is too small.



## EDNA BROWN

Quincy

*Hobby Club (Treasurer 3); KP Club; Library Club; Newman Club, 2nd Vice President of Woodward Dormitory 4; Dormitory Council 4.*

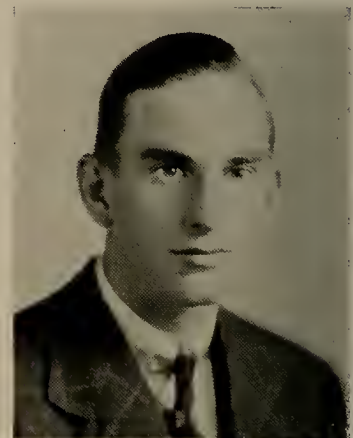
To the one who loves to travel and meet people; to the girl who becomes a friend of all those she meets. To the girl who is interested in everything and everyone. To you, Edna, we wish happiness for always.

## CAREY BRUSH

Raynham

*Men's Athletic Association 1, 2, 3, 4.*

Life to Carey is a walk along the sea-shore. Whether he is loping on the basketball court, or zealously engaged in harassing Mr. Durgin, the Brush happiness is in evidence. The boy with the plastered hair and frightening green tie (or it is red, Carey?) can teach us all a thing: the way to enjoy life is to live it.



## BARBARA BUFFINGTON

Seekonk

*Kindergarten—Primary Club (Treasurer 3, 2nd Vice President 4); Treasurer of Dormitory Council 4.*

You couldn't miss this vivacious little lady with the twinkle in her eye. Need enthusiasm, cheering-up, or just plain help? Call on Barb. Would Wood have its rec room if it hadn't been for Barbara?





## DORIS BURRELL

*Dormitory Council 3, 4; President of Woodward 4; Women's Athletic Association Board 3, 4; Newman Club 1, 2, 3, 4; Kindergarten-Primary Club 1; French Club 1, 2.*

Much of Doris's fame was founded on a Game Night many long years ago. From that humble beginning Doris rose to great heights as a party organizer, folk-dance leader, and ideas-for-entertainment encyclopedia.

As president of the dorm she had her great responsibilities as a go-between, but she squeezed between very satisfactorily.



## MARY CAMERON

Gloucester

*Hobby Club 1; Garden Club 2, 3, 4; President of Garden Club 4; W. A. A. Health Governing Board 3; Tillinghast Officer 2, 3, 4; Press Club 1; Kindergarten-Primary Club 1, 2; Student Fellowship 1, 2.*

Living by the sea has not turned Mary into a "seadog" entirely. While she is an accomplished swimmer and boatswain, she also displays with pride a purple ribbon won for a horticultural adventure in tomato-potato grafting (she calls it a Scotchman's delight to get two crops from one plot). Her sparkling wit and subtle humor has brightened many a quiet hour. As a result of four years at Bridgewater, she has decided that variety is not only the spice of life but also a key to successful teaching.



## ANTONIO CEDDIA

Boston

*Newman Club 1, 2, 3, 4; Men's Athletic Association 1, 2, 3, 4; President of Newman Club 4; Dean's Council 4.*

Tony is strong and severely masculine; yet, his blustering early anthropoidal ferocity is, in reality, part of a pose. For he is as harmless as Switzerland, and as soft-hearted and warm as a hot fudge sundae.

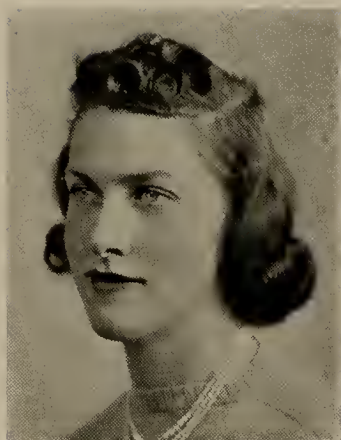


## PEGGY CHILDERHOSE

Wollaston

*German Club 3; Topics of the Day Club 3; Riding Club 4.*

Impulsive, generous, and humorous, Peggy is one of the most popular girls in her class. We'll all remember Peg's individualistic hair-do! Her vivacious personality is absolutely unpredictable, as are her spontaneous witticisms. She works best under pressure, but always gets things done. Good luck, Peg!

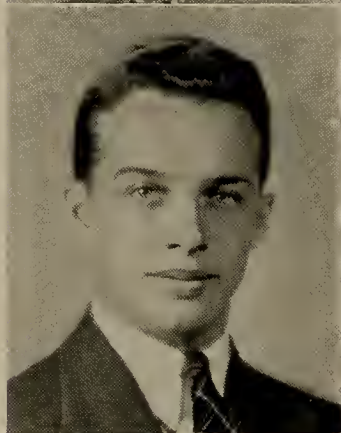


## CHARLOTTE CLARK

North Weymouth

*Hobby Club 3, 4; Secretary Hobby Club 4; Woman's Athletic Association 1, 2, 3, 4.*

No one entered more readily into the spirit of fun or laughed more heartily at our puns. Her unfailing sportsmanship ranks her as one of the best volley ball players on the campus.



## MALCOLM CLOUTER

Marion

*Men's Club 1, 2, 3, 4; M. A. A. 1, 2, 3, 4; Glee Club 1, 2, 3, 4; Orchestra 1, 2, 3; Soccer 1, 2, 3, 4; Tennis 2.*

Small, dapper Malcolm never staggers under his heavy burden: the aplomb of seven men. Trying situations only increase his volatility, and troubles only add to his indifference. For, his is the studied nonchalance of a Puck, unconvincingly maintaining his ability with the women, but — more power to you, Mal — maintaining it nevertheless.

## MARY CONNELLY

Somerville

*Dramatic Club 2, 3, 4; Dormitory Council 3, 4; Sec. 4; K. P. Club 1, 3; Hobby Club 1; Topics of Day Club 2, 3; Camera Club 3, 4; Sec. Protom of S. C. A. 4; Newman Club 1, 2, 3, 4.*

"Hello chickens" is the way Mary always used to greet us. But when the expression became too common, she dropped the "chickens" and now gives us her "hello" with her quick engaging smile.

She has delighted us many times with her dramatic interpretations in the dramatic club productions of everything from the boy, Holge, in "Why the Chimes Rang" to sweet Jane, in "Pride and Prejudice". But Mary not only has made a name for herself in dramatics, but has entertained us many times with her clever poetry and essays, and we can always depend on her to give just the right point of view in Phil. of Ed.

Her interest in teaching is surpassed only by the U. S. Post Office Dept., and we don't mean Mr. Farley.

## MARY COVENEY

East Weymouth

*Day Student Council 1, 2, 4, Secretary 4; Newman Club 1, 2, 3, 4.*

That gracious young lady with the utmost charm, poise and sophistication is Mary. Frequent chuckling and sparkling eyes are evidences of Mary's fine sense of humor. She is also noted for her exquisite hair styles and her immaculate manner of dress. To put Mary in a rapture, mention B. C. formals, football games, Block Island, and above all, Braintree.





## EILEEN CREAN

*Hobby Club 2, 3; Newman Club 1, 2; Horse-back riding Club 4; Women's Athletic Association 1, 2, 3, 4.*

Charming, dainty, unassuming — that's Sis. We all admire her for her easy going manner that seems to get everything done so well and yet so easily. Is it true Sis — not long for the teaching game?



## MURIEL DOBLE

South Weymouth

*Women's Athletic Association 1, 2, 3, 4; French Club 1.*

Muriel Doble is five feet of quiet efficiency. With a perky bow perched on the top of brown curls, she is the bundle of personality you see bobbing through B. T. C. corridors. An authority on army maneuvers, a lover of good music, good books, a good time, Muriel gets our vote for an ideal B. T. C. 'er. If you see a pair of sparkling eyes and then hear a contagious chuckle—that's Muriel.



## KATHRIN DONAHER

Quincy

*Class Representative to Student Council 4; Hobby Club 2, 3, 4; Secretary of Hobby Club 3; Newman Club 3, 4.*

This typical Irish colleen has laughing eyes, and is tall and gracious. An ever present smile displays her cheery disposition. Kay is gifted with the knack of appreciating anything artistic. This brunette, friendly to all, has added to our ranks of personable coeds.



## JAMES DONAHUE

Chelsea

*Varsity Basketball 1, 2; Varsity Baseball 1, 2; Treasurer of Class 2; Assistant Treasurer of S. C. A. 3; Treasurer of S. C. A. 4; Secretary of M. A. A.; College Mailman 3, 4.*

Our mailman is the king of silence. Slow, and terribly sincere, he never has a bad word for anyone. Certainly it was a pleasure to be dunned for one's Student Activities Fee by Jimmy, for, his smile and attitude are whimsical and infectious.

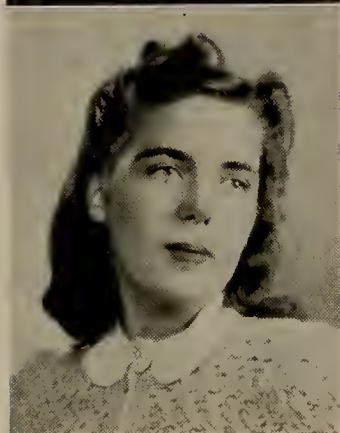


## MARY DRUMMEY

East Braintree

*Woman's Athletic Association Board Director of Hockey 4; Hobby Club 4; Newman Club 1.*

Small in stature, but tall in personality, we look to May for her spontaneous quips, imitations, and accents. She is the girl who can travel on the basketball court with as much ease as she can on a dance floor.



## ALICE DUNKERLEY

Brockton

*Hobby Club 2, 3; Women's Athletic Association 1, 2, 3, 4.*

Alice was one of the "Brockton" set, but a close friend of all. She excelled in sports and will be remembered for her intuitive sympathy.

## JEANNETTE DURGIN

Braintree

*Topics of the Day Club 3; Women's Athletic Association 1, 2, 3, 4.*

Jolly, happy-go-lucky, Jane is our budding chemist. Where goes Shirley there goes Jane, or else inquire at the nearest science lab. During the summer she leaves retorts for trays, and says balance is the secret of her success.



## WILLIAM EDGAR

Ludlow

*President of Men's Club 4; Chairman of Lecture Fund 4; Captain of Soccer 1, 2, 3, 4; President of class 1; Science club 2, 3, 4; Vice president of Science club 3.*

Bill is the diplomat of the class—urbane and bland. Seeing him mollify an indignant professor is an experience memorable for its subtlety and tact. Yet Bill is as capable as he is politic. His mien is imperturbable and quite English.



## MARY ELLARD

Quincy

*Newman Club 3, 4; Division Representative to Student Council 3; Hobby Club 2, 3, 4; Vice President of Hobby Club 4.*

Mary always presents a smart appearance, and has a charming manner. You'll hear spasms of laughter at any humorous remark, and she is all ready for a good time.

She is capable in many lines, but particularly in Music.



## ELLEN FAHEY

Randolph

*Women's Athletic Association 1, 2, 3, 4.*

Ellen always has time for everyone and everything. Though very serious in class, she displays a charming wit among her intimates! Those blue eyes reveal enthusiasm and earnestness. She has a friendly word and a smile always ready.

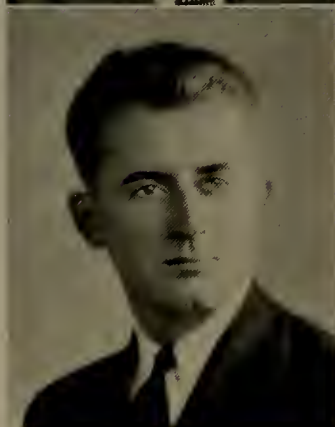


## FRANKLIN FAHNLEY

Dorchester

*Men's Athletic Association 1, 2, 3, 4.*

Good-natured and unobtrusive, Frank is the Lepidus of the Saxe, Rosequist, and Fahmley triumvirate. It is he who supplies the voluminous notes. Frank will be long remembered; he elected to spend his senior training period at the training school.



## LORING FELCH

Brockton

*Basketball 1, 2, 3, 4; Men's Glee Club 2, 3, 4; Baseball 1, 4; Class President 2, 3, 4; Class Treasurer 1.*

Pete is scholastically one of the highest in the class, and has an everyday common sense and a social acumen that is amazing. Tall, handsome, athletic, he is undoubtedly the most self-contained, the least self-assertive man among us. He is sedate without a grain of conceit, moral without an iota of priggishness.





## ETHEL FIELDS

Brockton

*Glee Club 1, 2, 3, 4; Dormitory Council 1, 2, 3, 4; Student Fellowship 1, 2, 3, 4; Choir 2, 3; A Capella 3; Press Club 3, 4; Garden Club 4; Social Activities Committee 4.*

Noted for her pianistic ability, Ethel has delighted us on many an occasion with her cosmopolitan repertoire. Indeed, this artistic tendency has expressed itself in many other activities, but especially in the art of the modern dance, in which she excels in movement and rhythm.



## ELNA FILIPSON

Attleboro

*Dormitory Council 3, 4; Vice President of Dormitory 4; Library Club 2, 3, 4; President of Library Club 4; Science Club 2, 3, 4; Secretary of Science Club 3; Garden Club 1.*

Elna had to act as mother and psychiatrist to everyone in her gang. There was seldom an evening when her room wasn't visited by three or four "pests" asking her advice, pouring forth their troubles, or getting her sympathy. Elna loved to skate, but one sunny Saturday morning Elna was minus a front tooth. Nasty ole ice!

## MARY FINN

Canton

*Hobby Club 1, 2, 3, 4; Topics of the Day Club 1, 2; Newman Club 1, 2, 4; W. A. A. Governing Board 2; Director Hockey 2; Folk Dancing Group 2, 3.*

Mary is our personal nomination for the most popular, most enthusiastic, and peppiest classmate with effervescent humor. Mary loves action and finds supreme satisfaction when leading a hockey team to victory.

## HELEN FISKE

Waltham

*Women's Glee Club 1, 2, 3, 4; Choir 2, 3, 4; Dramatic Club 2, 3; A Capella 3; Newman Club 1, 2, 3, 4; W. A. A. 1, 2, 3, 4.*

With the enviable ability to succeed in studies with a minimum of work, Helen has time to enjoy the fields of literature and bridge. Charm, dignity and serenity are qualities which make her one of the most pleasant companions. Her quick, spontaneous wit is a constant delight to everyone who knows her.



## RITA FITZGERALD

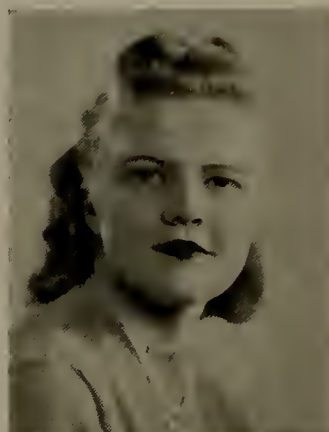
South Weymouth

*Newman Club 1, 2, 3, 4; Horseback Riding 4; Women's Athletic Association 1, 2, 3, 4.*

Rita is that little blonde who can always find something amusing to do on the dullest days. What she lacks in stature she makes up in personality. She punctuates her sentences with a winning smile, something which makes us doubly enjoy listening to her speak.

She is an expert horsewoman, and she can be seen dashing around the locker room in her smart habit.

Always ready to lend a helping hand, she is an addition to any group.



## LEE FLEMING

Dighton

*Dramatic Club 1, 2, 3, 4; Vice-President Camera Club 3; President Glee Club 4; Glee Club 1, 2, 3, 4.*

Best wishes to Lee, a former member of the class of '41, in his new career as a flyer and air instructor.



## DOROTHY FONTAINE

New Bedford

*French Club 1, 2, 3; President of French Club 3; Glee Club 1, 2, 4; Choir 1, 2; A Capella 2; Library Club 1, 2, 3; Sketch Group 3, 4; Vice-President of Class 4.*

As president of French Club during a very successful Mardi Gras year, and as vice-president of the senior class, Dorothy has shown fine qualities of leadership. Definite in her ideas and interests she is most capable in the fields of art, music, and French. Dot often enjoys presenting a practical and cynical view of life to her friends, but we have discovered her to be romantic underneath.

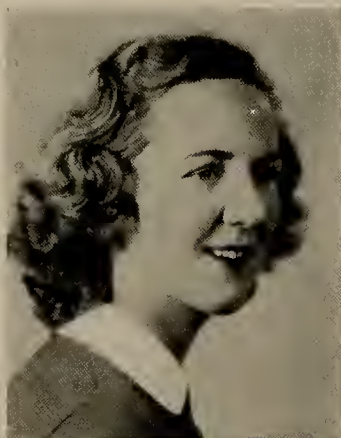


## LOUISE FORSYTH

Quincy

*Hobby Club 2, 3; Library Club 1, 2, 3, 4; Vice President of Library Club 4; Student Fellowship 1, 2, 3.*

"Anchors Aweigh" is Louise's theme song. As a Navy daughter she has had a life full of adventure. She can always be counted on to give the Oriental point of view, and when the subject of progressive schools is brought up, Louise never fails to expound on those California "palaces" called schools.



## ELEANOR FULTON

Cohasset

*Campus Comment Advertising Manager 2, 3, 4; Press Club 2; Topics of the Day Club 4; Kindergarten Primary Club 3; Garden Club Treasurer 2, 3, Secretary 4; W. A. A. Activity Director of Badminton, Baseball 4.*

Jovial, jolly and downright witty — that's Eleanor. She has a flair for figures in keeping our college account books and manages extremely well. She handles her bike and books with equal ease and goes out of her way to make others happy. Active in sports, Eleanor is an asset to any team or social gathering.



## MARY GIAMPEROLI

Bridgewater

*Glee Club 1, 2, 3, 4; Hobby Club 1; Newman Club 1.*

Tall, statuesque and attractive, Mary is a person completely enjoying life at its best. And when Mary talks, her beautiful husky voice radiates poise and calm assurance, two positive assets which have been proven to her colleagues. College activities would have felt the loss of her ardent support.

## DOROTHY GIDDINGS

Great Barrington

*Library Club 1, 2, 3; Lecture Fund Committee 3; Campus Comment (Reporter 1, Assistant Technical Editor 2, Executive Editor 4).*

The young lady from Great Barrington with that calm, cool, collected poise that fooled us all. The one with an overflowing interest in other people. We need not worry about this young lass as she has seven brothers to take care of her—lucky Dot!



## BARBARA GOVONI

Somerville

*Library 4; Newman Club 3; Literary Editor of Alpha 3, 4.*

Barbie is loved for her lively sense of humor, her wit, and ability to argue and a charming personality. When Barbie laughs it is impossible not to laugh with her. Discussing seriously some favorite topic, she is a fascinating person to hear. Her ability and versatility have led Barbie into the fields of Geography, History, Music and Art.





## LEONA GREGORY

Weymouth

*Dramatic Club 2, 3, 4; President of Dramatic Club 4; Dormitory Council 4; Secretary of Alpha 4; Hobby Club 1, 2; Newman Club 1, 2, 3, 4; Kindergarten Primary 1; Camera Club 3, 4.*

Leona is a constant surprise and delight to her friends. The talented president of the Dramatic Club shows her definitely English sense of humor in her reactions to jokes and in her droll expressions. A dabbler in science, Leona concentrates on her dramatic interests. When not rehearsing for one of Miss Low's productions she shows another ability — that of keeping Miss Stuart contented by her faithful and capable assistance.



## MARGUERITE HALLISEY

Brockton

*Dramatic Club 1, 2, 3, 4; Campus Comment 1, 2, 3, 4; Assistant News Editor 4; Press Club 2; Hobby Club 2; Newman Club 1, 2, 3, 4.*

Marg, with her peaches and cream complexion, is the one who gave first aid to the seasick (even the chaperone) on that trip of trips from New York. (Remember the orange toddies for Tod?)

Marg has been noted for her excellent dramatic interpretations from that first Freshman party to the last play of her Senior year. The one whom you see "nosing for news" to put B. T. C. on the map, is our star news reporter, Marg.



## LINNEA HARJU

Brockton

*Glee Club 2, 3, 4; Choir 3, 4; Civic Committee 4.*

"Lynn" is the modest girl with a definite musical talent. She is gifted with a beautiful voice plus pianistic tendencies. Her one ambition is to be an organist in a large church, and so we wish her a very successful future.



## NANCY HATCH

Wollaston

*French Club 1; Glee Club 1, 2, 3, 4; President of Glee Club 4; Dramatic Club 1, 2, 3, 4; Dormitory Council 3; Kindergarten-Primary Club 1; Choir 1, 2, 3; Campus Comment 2; Hobby Club 1.*

Capable, poised and sophisticated, Nancy led the Glee Club through a successful year. Her sparkling sense of humor and charming naivete are qualities which frequently overcome her sophistication. Nancy succeeds in whatever she undertakes, whether it is a social affair or an exam in Geog. We cannot be certain how long Nancy will teach, but she will always have a definite interest in teaching.



## MAE HAWES

East Weymouth

*Library Club 4; Hobby Club 3; Kindergarten-Primary Club 2, 3; Student Fellowship 2, 3, 4.*

Did you ever know her when she wasn't happy? It's our guess that Mae was the attraction for many customers at a certain Cape Cod tea room just because of her notoriously sunny disposition. She and Mary lived together for four years, an unusual feat for room mates — which proves that her n. s. d. (notoriously sunny disposition) isn't just turned on for the occasion.



## LUCILLE HEALEY

Waltham

*Topics of the Day Club 2, 3, 4; Dramatic Club 2, 3, 4; Newman Club 1, 2, 3, 4; French Club 1, 2, 3, 4; Kindergarten Primary 1, 2.*

What she lacks in height, petite Lucille more than compensates for in vivacity. Her hearty chuckle (well known to occupants of Wood's third floor) punctuates the end of any good joke. We know Lucille as a willing worker, a good scholar and a friend indeed in administering to ailing college mates. She says what she means and means what she says. May we add that Lucille is one of our ardent noon-time gym trotters.

## OLIVE HEY

Bridgewater

*Editor of Alpha 4; Assistant Editor 3; Glee Club 2, 3; Librarian of Glee Club 3; Topics of the Day Club 4; Lecture Fund 3.*

"Laws, what is it!" always introduces any doubt in our Olive's mind.

As the Editor of Alpha she had a tremendous task before her, and as in everything else, she has completed an exceptional piece of work. But Olive's talents do not stop at the literary, for she has turned out many masterpieces in the art and handicraft classes.

Although she has spent a summer abroad, seeing first-hand the work of the great masters, you can never imagine her enthusiasm over the art trip to New York.

## VIRGINIA HULL

Watertown

*Garden Club 1; Kindergarten-Primary Club 1, 2, 3, 4; Student Fellowship 1, 2, 3; Dormitory Council 4.*

Somewhere in the dorm an old "vic" groaned out one of Verdi's best, and we all nodded our heads, for we knew that Ginny was entertaining herself again. And the thing which amazes us most of all is that she can listen and get her studying done.

Kind, loveable Ginny — these are the words which best describe her.





## PHYLLIS JACOBSON

Brockton

*German Club 1, 2, 3, 4; Library Club 2, 3, 4; Campus Comment 2, 3; Chairman of Civic Committee 4; Student Fellowship 1, 2, 3, 4; Dormitory Council 4.*

"Now, at Monhegan", and we know that our Phyl is telling another of her many stories about the summers spent at Maine. Definitely interested in her teaching profession and in Monhegan, Phyl has even considered the idea of teaching up there. If Phyl is not giving the latest news on Monhegan, she will probably be reading one of her many poems, or telling of her accomplishments in the Swedish culinary art. She has amused us many times by her gullibleness and her lack of ability to get the point to our best jokes. Once a truly happy-go-lucky Scandinavian, she now divides her time between Monhegan and Williams College, which really isn't any division at all.



## PHYLLIS JOHNSON

Plymouth

*Women's Athletic Association 1, 2, 3, 4.*

Ideally athletic, quietly humorous, and forcefully reserved is Phyl. She personifies the standards of W. A. A. of stability, sportsmanship, and scholarship. Her scholastic ability is outstanding and everything about her points to a successful life.



## LOUISE KALAGHAN

Weymouth

*Dramatic Club 2, 3; Press Club 4.*

A lover of music, and a fine singer, Louise always shows a willingness and a co-operative spirit. This belies any promise of the usual operatic temperament, but we all hope to attend her concerts some day.

## FLORENCE KAMANDULIS

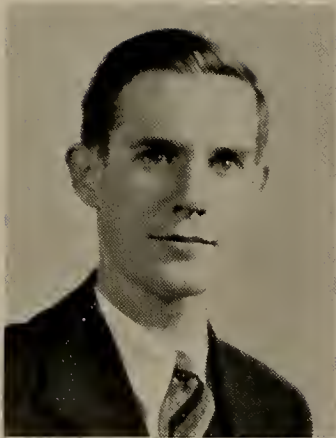
Brockton

*German Club 1, 2, 3, 4; Campus Comment 1, 2; Modern Dancing 2, 3, 4; Dramatic Club 3; Topics of the Day Club 4; President of Day Students 4.*

Florence and effervescence are synonymous. She is an agile and graceful dancer, a clever conversationalist, and a willing participant in all social activities.

As President of Day Students, she has exhibited a facility for accomplishing much in a pleasant and efficient manner.

We all admire that blonde hair and value our friendship with one of the most promising of the class of 1941.

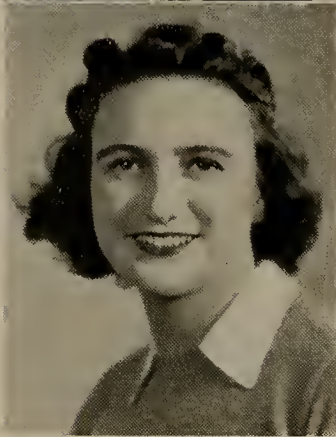


## WILLIAM KEARNS

Weymouth

*Class Representative 2; Dramatic Club 3, 4; French Club 1, 2, 3; Treasurer of Alpha 4; Newman Club 2, 3.*

Bill is mild, shy, and studious. A ranking member of the class, and a diligent student, he may frequently be seen disporting himself upon the stage in Miss Low's lighter dramatic vehicles. Bill is a born comedian.



## MARION KELLY

Quincy

*Dramatic Club 2, 3, 4; W. A. A. Division Representative 1; Kindergarten Primary Club 1; Topics of the Day Club 2, 3, 4; First vice-president 4; Newman Club 3.*

That irresponsible giggle could belong to no one else but Marion. One of the most cheerful girls on campus, she inevitably has an amusing anecdote to tell. Always willing to accept responsibility, Marion is a welcome addition to any group.

## DORIS KENNEY

Wollaston

*Glee Club 1, 2, 3; Choir 3; Chairman of Scholarship Committee 4; Student Council 4; Secretary Pro-Tem of W. A. A. 4.*

With a kindly "hello" to everyone, regardless of the weather, and a perpetual smile, Doris has been a constant supporter of school activities. Despite her scholastic application, she has always found time for a trip to the drug store or to help a fellow student.

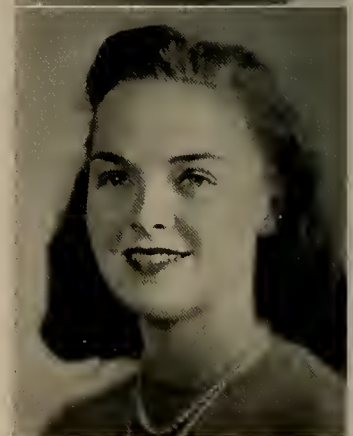


## ANN KING

Quincy

*Topics of the Day Club 3; German Club 3; Dramatic Club 2, 3, 4; Newman Club 2, 3, 4; Riding Club 4; Treasurer of the Day Students 4.*

Ann is everybody's friend and a friend to everybody. Merry and fun-loving, she spends her spares enjoying life. She is such a good sport and is an ever-present figure at noon-time dancing. Her artistic talent displays itself in posters and gym decorations and her delightful humor increases her wide circle of friends.



## FELICIA KRUPKA

Randolph

*Hobby Club 1, 2, 3, 4; Topics of the Day Club 1, 2, 3, 4; German Club 4; Women's Athletic Association 1, 2, 3, 4; Riding Club 4.*

Slavic in temperament, individualistic and dashing, Krupp needs no introduction to any group for her popularity is self evident. She is an equestrienne, a golfer and loves to travel; she is an admirer of Paderewski and has a zest for Polish folk dances. If what you like is a maximum of charm and wit, we recommend "Fil".



## NELLIE KUCINSKIS

Stoughton

*German Club 1, 2, 3, 4; French Club 2, 3, 4; Treasurer 4; Hobby Club 3, 4; Campus Comment 2, 3, 4; Sketch Group 4.*

If a difficult task must be done, give it to Nellie, and you'll have it done well. Her ability doesn't stop at history and French either, for she designs and sews her own clothes. With a bolt of cloth and her needle, Nellie has more than made her mark.



## MARY KYTE

Waltham

*Library Club 3, 4; Newman Club 1, 2, 3, 4; Secretary of Newman Club 3; Garden Club 1; Hobby Club 3.*

"When Irish Eyes Are Smilin'," it's Mary that's behind them. Our lovely colleen with her naturally wavy hair, could be depended on to do two things — open the dorm store every night, and stay sleepy until noontime. But when Mary did wake up—well!



## MARY LARKIN

Brockton

*Secretary of Dramatic Club 2, 3, 4; Secretary of Campus Comment 2, 3, 4; Treasurer of German Club 2, 3, 4; Newman Club 1, 2, 3, 4; Hobby Club 1, 2; Topics of the Day Club 2, 3.*

"Any news?", is the question Mary always asks, as she hastens to take out her notebook. She has been a great asset to Campus Comment, always doing her stories just the right way. She recognizes a good story, and always makes sure she gets it.

But Mary has another side to her. Her giggle is as catching as the measles, and we can always count on it after telling our best jokes and puns.

She enjoys dancing very much, and can be found at noon dancing at the gym, or at socials and formals.



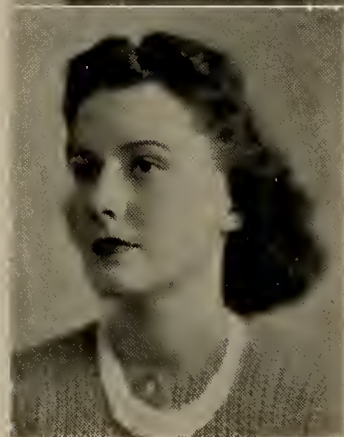


## MARY LATHAM

Quincy Pond

*Dramatic Club 2, 3, 4; Women's Athletic Association 1, 2, 3, 4.*

Mary was quiet and even retiring, but she could finish her work in no time at all, an ability we all admired. In Mary, there was a true sense of humor and her literary talents should provide her with a busy avocation, and perhaps, vocation.



## PATRICIA LYONS

North Weymouth

*Newman Club 1, 2, 3, 4; German Club 1, 2, 3, 4; Director third year; Garden Club 1; Division Representative 4; W. A. A. Representative 3.*

Pat's that dark-eyed, vivacious Miss whom you see running around getting things done so efficiently. Our authority on geography and geology, a faithful opera attendant, and an enthusiastic supporter of any good time, Pat is our idea of an all-round person. Ask her about Brown some day—or about Block Island. But one warning — never ask her to hurry.

## MARIAN MADAN

Randolph

*Glee Club 1, 2, 3, 4; Women's Athletic Association 1, 2, 3, 4.*

Charm, sympathy, and personality best describe Marian. She is known for her sincerity and naive manner. (The latter kept things moving fast in Phil. of Ed.) Soft-spoken yet deliberate, she is friendly and easy going, and she is bound to be successful in the career for which she is preparing.

## CAMELLA MAIEWSKI

Whately

*Topics of Day 3; Campus Comment 4; W. A. A. Board 1; House Board 2; Dormitory Council 3, 4; Secretary Pro-tem of Senior Class 4; Glee Club 4; K. P. Club 3, 4.*

Is it the Connecticut Valley sunshine that makes her hair so gold? It did give her a sunny disposition and a winning smile. As an organizer and friend she is tops.



## MALVENA MacDONNELL

North Weymouth

*Women's Glee Club 3; Choir 3; Hobby Club 4.*

We wish our girl with the golden voice and nimble fingers the utmost success in the future. As an accomplished singer and pianist she has made her mark here at Bridgewater, but her classmates will remember Malvena for her equanimity and ready smile.



## ESTELLE MACKEY

Somerset

*Garden Club 1; Secretary of Social Activities 1; Newman Club 1, 2, 3, 4; Glee Club 2, 3, 4; Choir 2, 3, 4; Dramatic Club 2, 3, 4; Director of Folk Dancing 3; Kindergarten Primary 1; Campus Comment 1, 2, 3.*

Small, dark and vivacious, Stelle is one of the most joyous members of the class. She is always ready to join in a lively activity whether it is a baseball game on lower campus or a game of "sardines" in the dormitory. Her dancing ability and her charming personality make her a welcome addition to any group.



## ILENE MARTIN

Brockton

*Glee Club 2, 3, 4; Choir 4; Hobby Club 1; Women's Athletic Association 1, 2, 3, 4.*

Socially she is hospitable, intellectually she is progressive and possesses great poise as well as taste. Conversation with her usually swings toward college football games, hockey, and proms. Ilene's scholastic accomplishments turn us green with envy.



## LUCILLE MARVILL

Easton

*Topics of the Day Club 2; Press Club 1; Riding Club 4; Archery 2, 3.*

Tall and good-looking, Lucille wears her clothes smartly. If you want the words to the latest song, ask Lucille. She has many and varied interests and her latest passion is horse-back riding. No conversation lags if Lucille is near. She is capable and confident, and is serious in her plans for a teaching career.





## MARY McGUIRE

Fall River

*Kindergarten Primary 1; Garden Club 1; Newman Club 1, 2, 3, 4; Topics of the Day 2, 3, 4; Library Club 1, 2, 3, 4; Campus Comment Associate Editor 4; Staff member 1, 2, 3, 4.*

Mary is tall, dignified and gracious. Her quiet charm is enjoyed by all who know her but she reserves her clever humor and livelier personality for her closest friends. The well-written and timely editorials in *Campus Comment* show Mary's ability in one of the fields in which she is most interested.



## AVIS McKEACHERN

New Bedford

*Chairman of Hyannis Play Day 3; Member of Chapel Committee 2; Woman's Athletic Association 1, 2, 3, 4.*

If you see someone rushing past you in the corridor, just taking time out for a quick "hi", you can be sure it's Avis. She is so much fun to be with and her merry sense of humor wins her many friends. Avie's vast store of energy is expended on everything from the classification of the Mollusks to a certain interest in New Bedford.

## ELEANOR McLAUGHLIN

Stoneham

*Glee Club 1, 2, 3, 4; French Club 3, 4; Choir 4; Newman Club 2, 3.*

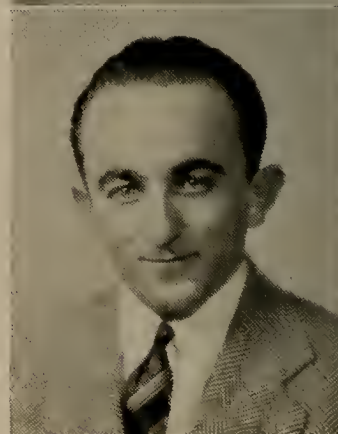
Ellie, always bursting out with some French phrase, has kept us posted on the latest dance bands and their recordings for four years. Originator of the "Foo", we shall always remember those hectic nights we spent in her room playing everything from "Song-Titles" to "Forfeits". But Ellie has a very serious side to her makeup. Majoring in French, she has put in four successful years. How well we remember her expressions, "I'm doing French". Ellie's interests range from the latest dance step to that certain someone at Worcester's "Holy Hill".

## NICHOLAS MEGAS

Lowell

*Glee Club 1, 2, Secretary 2; Manager of Tennis 1, 2; Men's Athletic Association 1, 2, 3, 4; Vice-President 3; Men's Club 1, 2, 3, 4; Lecture Fund.*

Our short Sophocles is a fiery soldier with a wrinkled forehead. Anything he may interpret as personally malignant is met with a feigned frenetic rage capable of deceiving very young rabbits and freshmen women. When the state of the world is not at too great variance with his moods (oftener than he lets on) Nickie is his natural, pleasant ebullient self.



## ELIZABETH MILNE

Quincy

*Science Club 2, 3, 4; President of Science Club 4; Library Club 3, 4; German Club 2, 3, 4; Lecture Fund 4.*

Betty's frankness and independence amazed and bewildered us at first, but we soon became accustomed to, and even expected it.

Definitely interested in Science, she has lived through four years of the most difficult science courses and has come out on top with the best of them.

But Betty's interests do not stop at science for she is very fond of dancing and has done a very successful job of teaching folk dancing at the Bridgewater Academy.

Betty has a few plans of her own, and come what may, she intends to realize them.



## GERTRUDE MITCHELL

Quincy

*Hobby Club 1, 2, 3, 4; Women's Athletic Association 1, 2, 3, 4.*

Always trim, neat, and pleasantly aggressive, Gertrude likes to wear blue for her auburn locks. She is invariably good-natured, frank, and sincere. Because she is particularly adept at mathematics, we predict a well-ordered future for her.



## LIETTE MORIN

Brockton

*French Club 1, 2, 3, 4; President of French Club 4; Women's Athletic Association 1, 2, 3, 4; Dramatic Club 2, 3, 4.*

Liette's typical French humor has won her many friends at Bridgewater and will carry her far in the social world. She has proven herself a capable and willing executive, and has brought interest and variety into French Club meetings.

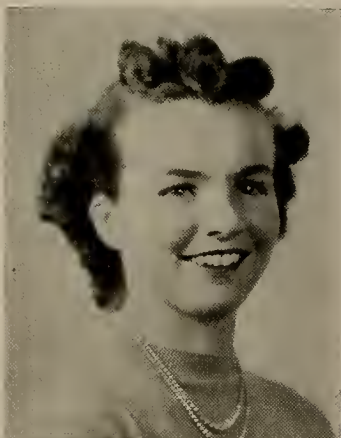
## INA MAY MOSHER

West Bridgewater

*Orchestra 1, 2, 3, 4; Topics of the Day Club 3; Scholarship Committee 4.*

Ina Mae has a definite appreciation of all the arts, but is especially enthusiastic about music. Her loyalty and dependability will help her scale the ladder, plus a genuine admiration for all that is fine in life.





## PAULINE MURDOCK

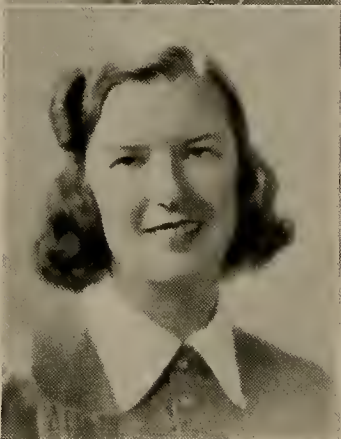
Milton

*Newman Club 1, 2, 3, 4; Hobby Club 1, 2, 3, 4; President of Student Cooperative Association 4; Social Activities Committee 4.*

Polly is our gracious S. C. A. president, and you'll always find her dashing from one meeting to another, always on the go, stopping long enough for a "hi" and a friendly smile.

She is the owner of that sweet voice which we enjoyed hearing so much, and we'll always remember the time she sang to us in chapel.

If Polly asked about the weather, we knew it was not just to make conversation, for she wanted to know if she would fly that day. She has many and varied interests, aeronautics being the most recent to be added to her already long list.



## CAROLYN NASH

Brockton

*German Club 1; Woman's Athletic Association Representative 2.*

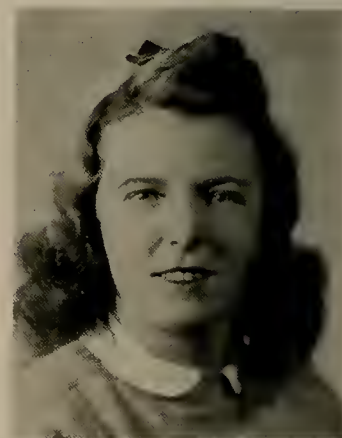
Friendliness and wit were the traits most evident when we met this charming lady. She is a smooth voiced Brocktonian who is always on time for buses. Very conscientious and efficient is Carolyn, no matter what her task may be.

## CATHERINE NOLAN

East Weymouth

*Woman's Athletic Association Division Representative 1, 2; Second Vice President of Woman's Athletic Association 4; Hobby Club 3, 4; Newman Club 4; Senior Representative for Day Student Council 4.*

Kay is an enthusiastic worker, always going somewhere. She can brush aside her homework with a blissful laugh, and get down to her chief interests ranging from athletics to hot-fudge sundaes.



## RUTH NUTTER

Norwood

*Kindergarten Primary Club 1, 3, 4; Glee Club 2, 3, 4; Social Activities Committee 2; Lecture Fund Committee 4; Treasurer of Woodward 4; Secretary Pro-tem of Dormitory Council 4.*

Slim, dignified, and lovely, Ruth represents our picture of the ideal college senior. Her qualities of sincerity, understanding and co-operation have made her one of the best liked girls on the campus. Ruth is enthusiastic about everything and may be found using this enthusiasm in the gym, on lower campus, or in a discussion of what she hopes to do in the very near future.



## SADIE O'BYRNE

Brockton

*Hobby Club 1, 4; Topics of the Day Club 1, 2, 3; Newman Club 3; Governing Board Women's Athletic Association 4.*

This dark haired colleen is a most nonchalant miss with a wealth of abilities and rare experiences. Sadie is peerless in the water, agile on the court, nimble on skates, and an enviable dancer. She loves a challenge and lively discussions. Diligence and wisdom, plus a dash of humor, are Sadie's secrets of success.



## RITA O'GRADY

New Bedford

*Woman's Athletic Association Division Representative 4; Hobby Club 3, 4; Newman Club 3, 4; Kindergarten-Primary 2, 3.*

Tall, obliging Rita has a gayety which is usually termed a "well developed sense of humor". She is always ready and willing to participate in anything, whether it be work or play. She is a welcome addition to any party.



## MADELYN OLENICK

Brockton

*Hobby Club 1, 4; Newman Club 3; Director of Soccer 3; Corresponding Secretary Women's Athletic Association 4; Women's Athletic Association Governing Board 3, 4.*

Being maid of many arts is the secret of her popularity. "Maddie" has shown a skill and enthusiasm in all diversions and has a reputation of accomplishing her intentions. Music is her primary interest, especially symphonies. Madelyn is a firm believer that "traveling broadens the mind" and hopes to explore the strange lands of this living world.



## ARNOLD OLIVER

Provincetown

*Dramatic Club 2, 3, 4; Science Club 3, 4; Soccer Team 4.*

Here is the self-effacing quietness of an honest person—dark, reticent, tall, with a demeanor that invites friendship, and lips that never shape "no". Where others glare, loom, or protrude, Arnie is the pleasant comfort of indirect-lighting.



## ELEANOR OLSON

Avon

*Women's Athletic Association 1, 2, 3, 4; Hobby Club 1.*

The companionship of this fair-haired Viking lass is sought by all for her jovial good nature and wealth of wit. Scandinavian traits are apparent for Eleanor excels in the culinary art and is a marvel on skates. She has an appealing and serene manner that blends into a charming personality.



## BETTY OWENS

Lowell

*Newman Club 1, 2; Library Club 4.*

The quiet reserve which Betty often adopts does not describe the lively personality and quick wit which she presents to her friends. Her ability to mimic and imitate makes Betty one of the most appreciated story-tellers of the class. She is small and slim with the ability to wear clothes and look young or sophisticated, as the occasion demands.

## NORMAN PAQUETTE

Taunton

*French Club 1; Newman Club 1, 2, 3, 4; Men's Athletic Club.*

A friendly, reticent ascetic is Norman, with an enviable philosophy of life, and an impersonal discerning mind. To that heaven of all kind Frenchmen, we shall come up to pay you a visit, Norman, one hundred fifty years from today. It's a date.

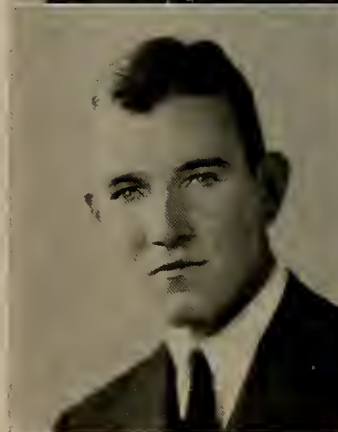


## W. WILBOR PARKINSON

Fairhaven

*Camera Club 1, 2, 3, 4; Manager of Soccer 4; Glee Club 1, 2, 3, 4; Treasurer of Men's Club 4; Campus Comment 4.*

Parkie, when you trip into the room on your soft clumsy feet, nothing about you says "Look", or "I", or "You". The door has opened and closed, and the atoms cease to bump. Soon the whole, long, inept goodness of you permeates each corner, patines each absorbed heart; for your words are the deep eyes of kindness, and your slow smile is a circumspect dawn.





## CLAIRE PATENAUDE

Taunton

*Women's Glee Club 1, 2, 3, 4; French Club 1, 2; Hobby Club.*

Claire's ambition is to teach in the intermediate grades, but knowing of her experience in office work, we shouldn't be surprised to find her going to her second love. Claire has an understanding way with little children, plus vast patience; two qualities which are requisites for either type of work.



## JOSEPH PLOUFFE

Brockton

*Dramatic Club 1, 2, 3, 4; Property Manager Campus Comment 2, 3, 4; Advertising Manager 2; Business Manager 3, 4; Alpha 2, 3, 4; Advertising Manager Science Club 2, 3, 4; Treasurer 3; Newman Club 2, 3; German Club 1.*

Joe is sober, douce, and terribly efficient, yet, for all his conscientiousness, certainly the most reliable man in the class. He is honest to a fault, thorough, capable; in short, an exemplary student and man.



## FAYE POSTLE

Brockton

*French Club 1; Glee Club 2, 3, 4; Vice President of Glee Club 4; Orchestra 2, 3; Choir 3, 4; Student Director of Choir 4.*

There is intelligence, personality, beauty, in Faye, the personification of modern youth. Already she has a combination of definite qualities and attitudes toward life. She excels in every line and has a flair for art and music. Faye cherishes a desire to travel far and wide, and to again claim California as her "home". Says Faye demurely, "Life is so short—with so many things yet to accomplish."



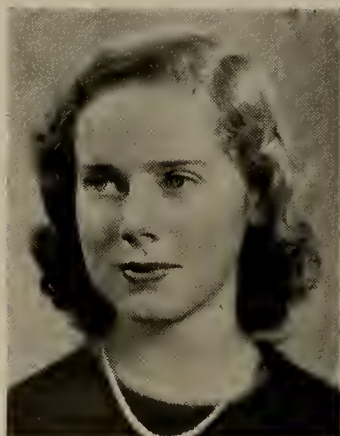
## SUZANNE PRATT

East Carver

*Garden Club 1; Women's Athletic Association 1, 2, 3, 4.*

Suzanne is reserved in her judgments and is loyal and generous to her associates. She is a happy medium of labor and laughter, with a generous measure of charm.





## PHYLLIS PRAY

North Weymouth

*Director of Folk Dancing 4; Hobby Club 3, 4; President of Hobby Club 4; Sketch Group 3, 4; Women's Athletic Association 1, 2, 3, 4.*

"Phyl" is sweet and quiet, characterized by poise and amiability. She is adept at handcrafts, knitting, and sports. Her lovely clothes personify a lovely person.



## JEANNETTE REED

Quincy

*French Club 3, 4; Newman Club 3.*

Jan is serious, thoughtful, and understanding. But don't be fooled by this quiet exterior. Behind it lies a girl with an enviable sense of humor and ability to enjoy a joke, especially if it's on herself. All who have ever worked with Jan know her dependability and her knack of getting things done quickly and well. We guarantee Jan is headed for success.

## AGNES RICHARDSON

Melrose Highlands

*Library Club 1, 2, 3, 4; Orchestra 2, 3; Sketch Club 3; Alpha (Assistant co-art editor 3; co-art editor 4).*

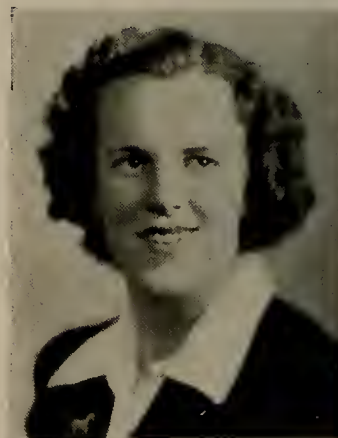
Skiing over the mountain tops and galloping along the byways, wouldn't you know her favorite subject is Geology? Although her interests are varied, she is always willing to take time out to help those in need.

## ALICE RICHARDSON

Melrose Highlands

*Sketch Group 3, 4; Alpha Board (Art Editor 4); Orchestra 1, 2, 3, 4; Garden Club 1, 2; Dramatic Club 2, 3; Class Representative 1; Student Fellowship 1, 2, 3, 4.*

We salute the first one to arrive. Her ambition has been to decorate the gym better for each dance. To her we owe a bountiful supply of appreciation for the many posters and decorations she has so willingly done for us. Maple is her favorite flavor, I wonder why?



## MARGUERITE ROACH

Fall River

*French Club 1, 2, 3; Garden Club 1; Kindergarten-Primary Club 1, 2; Library Club 2, 3, 4; Topics of the Day Club 1.*

For identification purposes — a unique knitting bag with dangerously protruding needles hooked on a little finger, a ballot box under one arm, an historical novel under the other, and a Fall River accent, especially noticeable in the fond utterance—"John". When she studied no one knew, but what she knew astounded everybody.



## BEATRICE ROBBINS

Brockton

*German Club 1, 2; Topics of the Day Club 3, 4; Menorah Society 1, 2, 3, 4; Day Student Council 2.*

Bea has that dark vivacity and a contagious enthusiasm coupled with a keen appreciation of music and art. Our unsuspected Math whizz has been a constant inhabitant of the social room and a sincere and forceful member of our class.



## LILLIAN ROGERS

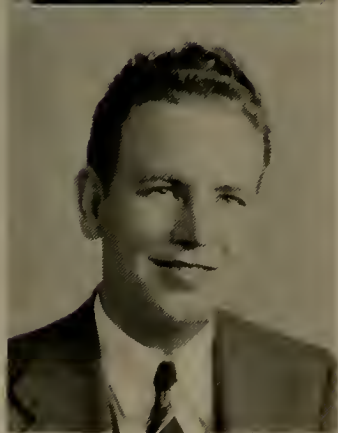
Bridgewater

*Topics of the Day Club 4; Kindergarten-Primary Club 1; Dramatic Club 1, 2; Women's Athletic Association 1, 2, 3, 4.*

"Lil" to the girls here at school, but always "Shorty" to the girls at Monhegan. But whether Lil or Shorty, she is one of the liveliest girls in her class, and is considered a pal by all.

Her curly hair, merry blue eyes, and a lovely smile are the things we know her by. She is always happy, and never lets perplexing problems bother her for long. She has a solution for everything and anything.

But could that merry twinkle in her eye be caused by a certain someone from "way out west?" How about it Shorty?



## DONALD ROSEQUIST

Avon

*Men's Athletic Association 1, 2, 3, 4; Topics of the Day Club 1, 2, 3, 4.*

The handsome, hard-working blonde from Avon, that's Don. Don is the most efficient N. Y. A. worker in the school; but what is more remarkable, ironical though it may be,—he is a dyed-in-the-wool Republican. Settled and practical, Don can always be depended on to give the outlook of the married man on existing problems.





## EILEEN ROWE

Bridgewater

*Kindergarten-Primary Club 1; Topics of the Day Club 2, 3, 4; Dramatic Club 1, 2, 3, 4.*

"I" has an attractive smile and a delightful personality with the red hair. Something must have given the zest to her laughter, the deviltry to her eyes, and the "pep" to her motions. Could it be that someone in Ithaca?



## JEAN ROY

East Walpole

*Glee Club 3, 4; French Club 1; Library Club 4; Kindergarten-Primary Club 1, 2, 3, 4.*

When anyone wanted to hear a good joke, she'd hie herself off to Jean. When anyone wanted a few conga lessons, down to Jeans room she'd trip. When anyone suspected a bit of mischief afoot, she'd set out after Jean. This young lady seemed to hold all the strings to the bag of fun for her gang. Without her, things were very dull. With her, they never knew a minutes' peace.

## LOUISE RUBOLINO

Brockton

*Topics of the Day Club 3; Newman Club 1; German Club 4.*

Louise is a demure and quiet individual. For four years she has been the more quiet half of that inseparable Alice-Louise combination. Louise is noted for her neat, smooth clothes, and very distinct hair styles.

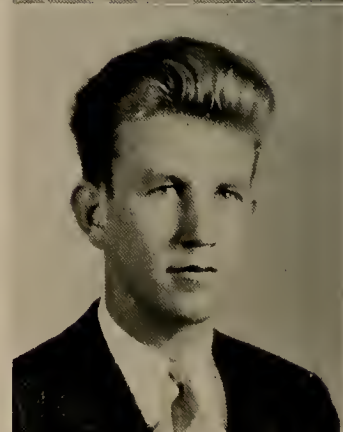


## JAMES SAVAGE

Quincy

*Men's Club 1, 2, 3, 4; Glee Club 2, 3; Newman Club 1, 2, 3, 4; Men's Athletic Club 1, 2, 3, 4; Soccer 1, 2, 3 (Captain 4); Tennis; Baseball 2, 3, 4.*

With enough quick wit and intelligence to squander as he pleases, Jim saunters through our environment so easily and lackadaisically that we are too prone to notice the former and overlook the latter. Blonde, roguish, somewhat headstrong, with ever an eye for the ladies.

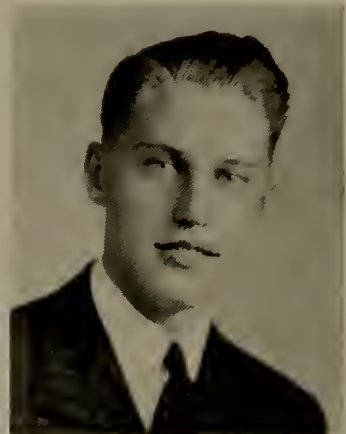


## EDWARD SAWICKI

Middleboro

*Class Treasurer 3, 4; Newman Club 2, 3, 4; Dramatic Club 3, 4; Orchestra 2; Men's Athletic Club; Class Representative 3.*

As an alert, clear-eyed, leading scholar, Ed needs no introduction. Certainly, he is one of the most deserving members of the entire graduating class. For the esoteric group of stags that line up the gym wall every noon, he is also a mad-cap clown with a dead-pan delivery that would panic even the groundlings.



## MORRIS SAXE

Mattapan

*Glee Club 1; Topics of the Day Club 2, 3, 4; President of Topics of the Day Club 4; Class Representative 3.*

This red-head knows his current events; you will always find him in the library perusing the New York Times. Not only is he our expert on national politics and international affairs, but he is a top history student. When we want a clear and logical mind, a dependable and efficient worker, we turn to Morris.



## IRVING SCLARENCO

Quincy

*Orchestra 1, 2, 3 (Manager 2, 3); Dramatic Club 1, 2, 3, 4; Men's Athletic Club 1, 2, 3, 4; Horse-Back Riding Club 4; Topics of Day Club 1, 2, 3, 4; Men's Club 1, 2, 3, 4.*

Irving is one of the best-dressed men at school; a good dancer, and an inchoate horseman. He is a skilled member of the Dramatic Club.

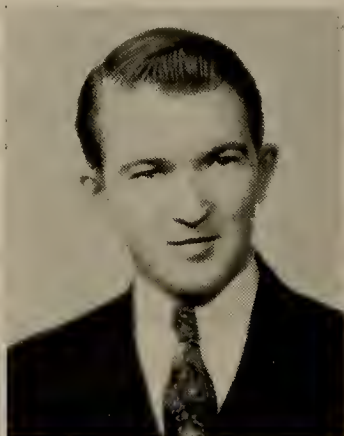


## SYLVIA SHAFF

Taunton

*Campus Comment 2, 3; News Editor of Campus Comment 4; Topics of the Day Club 4; Menorah 1, 2, 3, 4; Day Student Council 4.*

Sylvia is petite and charming with a twinkle in her eye. She has a leisurely air and can be seen endlessly curling those raven locks. An individual in her way, a loyal friend and gay companion, Sylvia is bound for success.

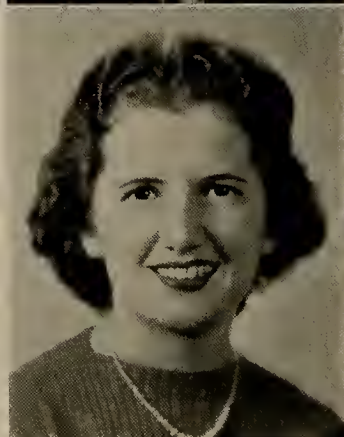


## JOHN SKAHILL

Wellesley

*Dramatic Club 1, 2, 3, 4; Men's Athletic Association 1, 2, 3, 4; Soccer 2, 3, 4.*

Johnny is little and energetic, a thorough businessman, and one of our best dancers. Not many know of the open-handed generosity which comes so easily to him, nor of the meager amount of time and effort he requires for accomplishing his studies.



## RUTH SMALL

New Braintree

*Glee Club 1, 2, 3, 4; French Club 1, 2; Student Fellowship 1, 2, 3; Librarian of French and Glee Clubs 2; Secretary of Glee Club 3; Vice-President of Student Fellowship 3; Chairman of Chapel Committee 3; First Vice-President of S. C. A. 4.*

One of the leaders of S. C. A., Ruth uses her unlimited energy and abilities wherever they are needed. Her personality is a combination of dignity, vivaciousness and the ability to make people feel at ease. Ruth has a lively sense of humor which has provided many delightful moments for her understanding friends.

## ANNE SMARSH

Middleboro

*Women's Athletic Association 1, 2, 3, 4; Camera Club 3; Class Representative 4.*

Although Anne was quiet and unassuming we will not forget that she invariably took top scholastic honors in nearly every class. Her simplicity was, and will be her drawing card. We look for great things in her future career.

## MARY SMITH

Holbrook

*Hobby Club 1, 2, 3, 4; Topics of the Day Club 2; Newman Club 1, 2, 3, 4; Folk Dance Group 2, 3; Day Student Council 1, 2, 3.*

Well informed on everything from the latest dance step to politics, Mary always appears to be amused with the world. Titian hair and laughing blue eyes remind us of a little bit of Erin, for "Smythe" has entertained us many a time with her Irish ballads. Her abilities extend to drama and music, and she also has a facile pen for poetry.





## THOMAS SPARKES

Taunton

*Men's Club 1, 2, 3, 4; Men's Athletic Club 1, 2, 3, 4 (President 4); Basketball 1, 2, 3, 4 (Captain 3); Baseball 1, 2, 3, 4; Soccer 3, 4; Glee Club 1, 2, 3, 4; Newman Club 1, 2, 3, 4.*

Sparksie is a man's man; unobtrusive, unassuming, and worldly, with an unconscious sophistication that is admirable. Best and most versatile athlete among the seniors, Tom is indifferent and truthfully modest: a thoroughly good egg, and more so because he doesn't realize it.



## LOUISE STANGE

South Deerfield

*Topics of the Day Club 2, 3; Penman Club 1, 2, 3; President of Dormitory Council 4; Campus Comment 3.*

Our gracious president of Dormitory Council fulfills her duties with ease and ability. As student-director of N. Y. A. Louise had another opportunity to show qualities of leadership. Friendly, poised and charming, Louise is also one of the most enthusiastic members of the class especially when she is discussing military affairs.



## DOROTHY STOLER

Quincy

*Topics of the Day Club 2; Menorah 1, 2, 3, 4, Treasurer 4; Glee Club 3, 4.*

A bright-eyed lass whose wit makes her an amiable companion. But we can never be sure of one phase of her disposition or action for five minutes. We know her at her best in music for there her keenest interest lies. Through everything penetrates her ability and easy manner, which will be an asset in any field she enters.



## RUTH STONE

Brockton

*Topics of the Day Club 1, 4; Menorah 1, 2, 3, 4, President 4; Campus Comment 1, 2, 3, 4; Dramatic Club 1, 2, 3, 4.*

How Ruth delights in excellent marks and manages to attain them. Some day, surely, Ruth shall be an executive, for reliability seems to be one of her outstanding qualities. Poise, a keen mind, and a likable personality are her's. Ruth is as generous as she is intelligent.



## ESTHER SULLIVAN

Fall River

*Newman Club 3; Sketch Group 3, 4; Class Representative 4; W. A. A. 2, 3, 4.*

Although she transferred from Framingham in her sophomore year, Esther soon became a lively leader among her classmates. She was often the center of an animated discussion on the foreign situation. She has the outstanding ability to maintain a point once she has started it. For that reason we should not be surprised to live up to her resolutions of furthering her studies towards a college professorship. Her talent as an artist certainly makes that goal seem attainable!



## WINIFRED TAYLOR

Brockton

*German Club 1; W. A. A. Representative 1; Kindergarten Primary 3; Treasurer W. A. A. 3; Secretary pro-tem of S. C. A. 3; Second Vice-President of S. C. A. 4.*

Friendliness and personality have made Wini one of the leaders of S. C. A. Her slow, charming voice belies her speed of accomplishing everything she attempts. She is an ardent sport enthusiast and spends much of her leisure time on the tennis courts or in the gym. Wini is a person who can successfully combine studies, responsibilities and a full social program.

## SHIRLEY THOMPSON

Braintree

*German Club 1; Topics of the Day Club 3, 4; Vice President of Day Students 4; Class Representative of Women's Athletic Association 4.*

Whether it's politics, geography, or the next dance, Shirley is our enthusiast. Always happy, Shirl's frankness amazed us at first, but we know that it will assure her many smiles in days to come. But don't let her fool you, for she'd exchange them all for a "Brown" man any day.

## CAROLYN TURNER

Falmouth

*Campus Comment 3, 4; Technical Editor of Campus Comment 4; French Club 1; German Club 2, 3, 4; Garden Club 2, 3, 4; Library Club 3, 4; Vice President of Woodward Dormitory 4.*

The salt breezes from the Cape blew a refreshing addition into Bridgewater fortunately for T. C., German Club, and Woodward Dormitory, and all of us at large. Her beautiful clothes, and her curly hair will always be remembered, as well as her love for flowers. As our farmerette, she could be seen puttering around the plants in her room. However we don't predict a turnip raising future for Carolyn. The way in which she taught school at Middleboro has shown us that she is going to do things, and we don't necessarily mean solely along teaching lines.





## GERTRUDE TWOHIG

Brockton

*Class Vice-President 1, 2; Dramatic Club 1, 2, 3, 4; Newman Club 1, 2, 3, 4; Topics-of-the-Day-Club 1, 2, 3, 4; German Club 1, 2, 3, 4; Vice-President of German Club 4; Hobby Club 1, 2, 3, 4; Secretary of S. C. A. 4; Feature Editor of Campus Comment 2, 3, 4.*

Her consistently happy disposition and her willingness to help on every occasion make Gert one of our most popular co-eds. She is one of the real troupers from the Dramatic Club for, when sister Twohig "gives them the old eye-ball", they fall. Our S. C. A. secretary is one of the big assets to our class; we can always rely upon her to create the right impression.



## ROWLAND TYNDALL

Bellingham

*Men's Athletic Association 1, 2, 3, 4; Track 1, 2.*

No one dislikes Rowland; that is impossible. Quiet and unassuming, he is always surprising us with his rare, but timely, and humorous remarks, given in his slow speech. Rowland is our farmer. And lest you forget, on those hard-working shoulders there is a thinking head.



## LORA VON BERGEN

Wollaston

*Glee Club 1, 2, 3, 4; Orchestra 1; Dramatic Club 2, 3, 4; Topics of the Day Club 2, 3; German Club 2, 3; Sketch Group 3, 4.*

Lora is one of the most versatile members of our class, doing exceptional work in poetry, art, and music.

She undertook a tremendous task in planning the Class Day program, and as in everything else, she did it easily and well.

Lora has amazed us with her beautiful designing, and has turned out many smart ensembles.

Knowing her talents, we are certain she will be successful in whatever she undertakes in the future.



## EILEEN WALSH

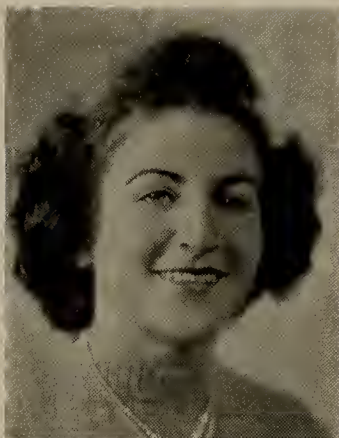
Quincy

*Orchestra 1, 2, 3, 4; Newman Club 3, 4; Topics of the day Club 3, 4; W. A. A. Governing Board 1, Vice President 4; Chapel Committee 4.*

A flashing smile, laughing eyes and a keen sense of wit, all typify Eileen. Sympathetic and understanding of nature, she is alert to everything going on about her, and enters into a multitude of activities. Eileen's participation in athletics is evidence of her grand school spirit.





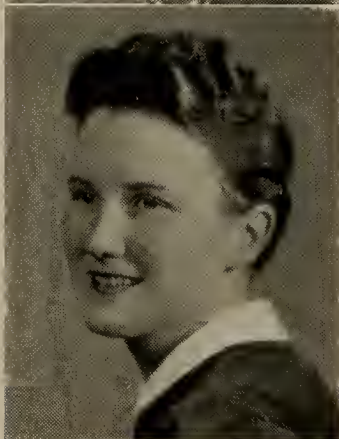


## LILLIAN WARREN

Brockton

*Menorah 1, 2, 3, 4; German Club 1, 2, 3, 4; Librarian of German Club 2; First Vice President of German Club 3; President of German Club 4.*

Pert, always effervescent and bubbling, Lil has a light heart and a carefree smile. She is eager and able to help, but her plans for the near future are going to deprive some school department of a willing worker.



## HARRIET WELCH

East Freetown

*Hobby Club 2, Women's Athletic Association 1, 2, 3, 4.*

Harriet is small but mighty. She has a sincere interest in the Grange and devotes much of her time to lecturing — what better qualification for teaching? This special ability, plus her sincerity, efficiency and charm make us feel that she will accomplish great things.

## ARLEEN WESTON

Brockton

*Topics of Day Club 1, 2, 3, 4; Dramatic Club 2, 3, 4; Hobby Club 4.*

With a strong "Yankee" background, Arleen has been the mainstay of the argumentative section of the elementary division. Very cute, with brown curls that are the envy of the school, she has been a four year commuter on the Brockton bus. Strong were the discussions held with Faye about the prom favors and many were the refreshment committees headed by Arleen while at B. T. C. Slim and petite, Arleen should go far in her chosen field.



## NORMA WOLF

Quincy

*Science Club 3, 4; Topics of the Day Club 2, 3, 4; Camera Club 3; Menorah Society 1, 2, 3, 4.*

A staunch friend with an enviable naturalness, Norma has a weakness for scientific subjects. She is a bicycle enthusiast, more than holds her own in political arguments, and has a persistent desire to know all the answers.



## ELIZABETH B. WOOD

Lawrence

*Garden Club 1; Glee Club 2, 3, 4; Kindergarten-Primary Club 1, 2, 3, 4; Student Fellowship 1, 2, 3, 4.*

Betty has entertained us many times with the stories about her summer job. We have laughed until we hurt and until we begged her to stop.

She is very interested in her teaching profession as can be seen by the fine work done at Senior Training.

But how about its being your life's work, eh, Betty?



## ANASTASIA ZOSLOSKY

Taunton

*German Club 1; Women's Athletic Association.*

"Stasia" is one of our shining examples of the saying, "still waters run deep". This demure and quiet red head can be seen working industriously only to stop once in a while for a shy smile. At home, however, her Russian temperament has more opportunity for expression. Luck will surely follow her flaming hair all through life especially in her hobbies of dancing and souvenir collecting.



## ROBERT VAN ANNAN

Dorchester

*Glee Club 1, 2, 3; Men's A. A. 1, 2, 3, 4; Dramatic Club 1, 2.*

An amazing fellow, this Van Annan. From the lips of this iron-muscled athlete there continually flows a stream of polysyllabic words, intricately phrased, and spiced with typical Van Annan puns. Nothing ever disturbs his equanimity, nothing ever changes him. He is just Van Annan; he will always be just Van Annan, never perturbed, never serious, never at a loss for words.

# Special Students

## JOSEPH KING

Avon

Joe King has completed the work for his B. S. in Education, and will receive his degree in June, 1941.

## HAZEL TIEDEMANN

Adams

Hazel took a year's leave of absence from her teaching duties and came here last year. The girls in Tilly will remember her subtle humor, and her friendly manner.

# A White One

Vanichka couldn't get along with the English teachers

When they said mine  
he said yours which is the wrong answer

And when they said yours  
he said yours which is still the wrong answer

When he grew older he didn't get along either

Because when they said dance  
he said watch

And when they said bonhommie  
he said farce

And sometimes they said fish or scissors  
and he didn't say anything

And in all that time he has never learned how to say  
Vanyi or Vanichke

Which should make him mighty ignorant

A. S. A. '41



## Former Members of the Class of 1941

Helen Abbott: trained to be a beautician; now practising in Somerset.

Evelyn Allen: working in Randolph.

Virginia Archibald: is Mrs. Ralph Sawyer and has a son, Robert.

Irma Bartlett: living at home in Foxboro.

Esther Brown: will graduate from Massachusetts State College in 1942.

Jean Coady: training to be a nurse in Massachusetts General Hospital.

Doris Dimery: transferred to the Leslie School.

John Dowd: at Camp Edwards.

Alice Dunkerley: now working in Brockton.

Lee Flemming: transferred to Darr Aero Tech. School of Aeronautics in Albany, Georgia.

Marion Hall: now Mrs. James Hornstra; lives in East Bridgewater.

Nelson Houlberg: married and working for the American Refining Company.

Phyllis Johnson: transferred to Salem Teachers College.

Mary Latham: left due to health; living at home in Quincy.

Helen McCullough: left in 1939; now married.

Jean Petrovicz: attending a secretarial school in New York City.

Marion Pratt: working for the Plymouth Cordage Company.

Jeanne Quigley: married and living in Taunton; has a son.

Robert Read: left in 1940; returned this year and will graduate with the class of 1942.

John Selivonchik: now working at Fore River Shipbuilding Company.

Ira Smith: at Camp Edwards.

Fannie Szathmary: working in a millinery shop in Quincy.

Robert Blackwell

Helen Brazil

Nancy Crowell

Leo Curley

Florence Pike

Yone Querze

# Alma Mater

1.

Within thy life we grew;  
The task you set we knew:  
To burn thy beacon bright,  
Where fail the rays of light.

Chorus

O Alma Mater, thy children strive  
To keep thy faith alive  
O Alma Mater, we sing for thee  
This song of loyalty.  
O Alma Mater, thy voice alone  
Will guide in paths unknown.

2.

Within thy life we sang  
Of love and peace that rang  
Throughout thy sounding halls  
Now memories in thy walls.

3.

Beyond thy life we raise  
Thy worthy name in praise  
Where e'er we chance to be  
We'll honor B. T. C.

Walter Nardelli, '33





# History of the Senior Class

We had always intended when the time came to tell our story, to write a simple history of our progress from Initiation Week to Commencement. It was to describe how we gradually laid down our early fallacies and took up lasting truths and principles; and it might have been a useful gift and guide to coming classes. But we were plainly not the class to write it. Our lives did not run with clocklike regularity. The past years overlap those which are here already, and those which are to come have always been with us. Truly a paradox, but we are a very paradoxical class. From the first day we wandered blushing around in our angel robes, we have both surprised and disappointed many people.

Freshmen week didn't frighten us — at least we didn't think it did. It was intense excitement, rather than fear. We were an unfortunate looking lot, we who were so meticulous. We all had a secret desire for that glamour with a capital "G", but bonnets, toys, and black stockings didn't aid us in our search for sophistication. But we clung together, just as we have always clung together; and soon the week was over. We had little regret when we laid aside our disguises — for we had been disguised. Little did we know that we had passed one of the many milestones in going to college. Then there was the first Freshman party. We were all a little timid, but this was soon to wear off, for at the second Freshman party we had all become thoroughly acquainted, and that affair turned out to be one of the best that had been seen in years. Even now we had started to be thought of as a remarkable class.

The Freshman year wore on. All events in the school were to include a freshman, for we were not a class to be excluded. Somehow looking back at that year makes it seem so near. That impression of the first social, the first date on campus, the thrill you got when an upperclassman took you out—the excitement, and the new experience of your first formal, all these seem so vivid. All these, and many more stand out, and yet in between this round of social life we went to classes. Yes, we would remind ourselves once in a while, that is why we are really here. It was all over then, and we weren't freshman any more, and the thought amused us, and secretly thrilled us a little. And still we clung together.

Then another fall had come, and we had become known as the Sophomores, superior, more popular, more liked, so we thought, than any other class in the school. It was our turn to play the hard-hearted, college sophomores to the incoming freshman class. What would we have them wear? But wait, we had been through all that once, and had come out of it with some strong vows never to be guilty of doing a thing like that to another freshman. But what difference did it make really, everyone goes through it, and so we laid our plans. But it was fun, and we really had them scared!

That was the year we had the hurricane. Those were the afternoons we took film after film of pictures. Everything from a devastated lower campus to those brawny N. Y. A. workers. That was the year we lost our prize blue spruce, and a beautiful Christmas tree. Yes, Mother Nature had wrought a few changes in a few hours.

And then somehow we had grown apart. Oh, we girls knew why, and we hoped that the men didn't think it was bothering us. We didn't care—let them take the Freshmen women out. We didn't care. And yet secretly we did—oh, we wouldn't give them the satisfaction, but we did. That was the year that the Woodward scandal sheet came out. And not to be outdone, the fellows wrote one of their own. And we who had clung together, were now slinging mud at one another. But we soon lost interest, just as a child soon loses interest in a new toy, and there we were, right back where we had started from.

The third year was the first year which found us really separated. In between all of us stood the Training School. Opinions differed as to the likes and dislikes, and still do. But how well we remember those eight weeks, with the hours eight to four, if you were fortunate, or any other time after that standing foremost in our minds. Here we seriously came to the conclusion that we were, or were not, made for this profession. But somehow we lived through those long hard eight weeks, which had taken us out of the college life.

But Friday night found us ready to take in the weekly social, concert, or the latest movie at the local theatre. We found ourselves dancing under the tropical flowers at the Junior Social, and at the Junior-Sophomore Valentine Ball.

June ushered in the thoughts of the coming year which was to make us seniors. We loved the sound of that word, and yet more than once someone had remarked—"but I don't feel like a senior". And then we wondered whether anyone had taken time to define "senior feeling". How were we to really to know then?

With Commencement came the daisy chain. We were honored at the privilege, and a little shiver of excitement ran down every spine as we began our long march down the campus. That day brought us to the realization that we were really seniors. Somehow we had grown more mature that year. Perhaps it was our eight weeks in the Training School, and perhaps it was the thought of becoming a senior. But somehow, as we stood under our daisy corsage, we really could appreciate that stray tear that slid down some seniors' cheeks. Somehow, in that hectic year we had come to love the things that these seniors were leaving behind. The thrill and excitement of coming back, that long walk to church, English muffins and coffee at the "dog-cart", always meeting someone in the rotunda, and those nice, crisp afternoons, skating on Carver's Pond. Yes, we could understand those tears, and with this understanding we went home.

And now we are seniors. Somewhere in between the time of the last Commencement, and the Commencement in June, we have found the true meaning of the word senior. There is a dignity about being in the fourth year, that we did not find in any other year. And yet we didn't find ourselves like so many reserved, inhuman creatures. We were still capable of laughing at that funny story told yesterday, or seeing the humorous side to the latest comedy at the theatre.

We have acquired that much spoken of "professional attitude" somewhere along the line. Perhaps it was the outside training that we did, or perhaps it was just being a senior. Our outside training really decided our fate for us. We were all to be teachers, for we had found something, which was not present at the Training School. Somehow our pupils had felt that we were really teachers, and not just experimenters with so many guinea pigs.

We entertained the underclassmen with our chapel program on foreign affairs and again at our barn dance. But then our class has always entertained everyone at school. If there was something to be done, no matter whether we were freshmen or seniors, we could always find some way of doing it. We have been a truly remarkable class.

Senior Prom — what a wonderful time for everyone. How we wished that that night would never end. Everyone looked so well, and there were so many smiles and good wishes.

And then came Commencement — and all the thoughts that had never been spoken came out. We deeply love this old school, and all that it stands for. There are so many things to be remembered. So many incidents to laugh about, and so many to bring those rosy blushes to our necks. Yes, we truly loved this old school steeped in traditions and good fellowship.

Barbara M. Govoni, '41



## Tragedy

The wind niggles among the pines;  
With unhurried regularity the soft white puffs  
Of smoke  
Push their little heads above the distant copse  
And on the gravel shelf  
A playful spurt of sand dances up  
Daintily.  
For a moment, just a moment,  
There is a gleam of steel above the ledge;  
From the bosk  
Another white circle rises leisurely,  
And August Freitag,  
(You know "Kleinchen" Freitag!)  
Sophie Freitag's little August,  
With the pale blue eyes  
And girlish laugh,  
Is dead—as any stone.

A. S. A. '41

## A Nice Girl

When you stand there,  
Purple velvet,  
Looking,  
Never seeing;  
Speaking,  
Never saying;  
What an impulse  
Sieves me  
To grasp you by those classic shoulders,  
And shake you fiercely.  
And I would,  
Believe me,  
If I didn't know that then  
Your head would surely fall off,  
And I should have the embarrassment  
Of picking it up  
And putting it back on for you.

A. S. A. '41





# Commencement Exercises

General Chairman — Loring Felch

June 1 . . . . .	BACCALAUREATE
June 2 Hotel Vendome . . . . .	PROMENADE
General Chairman . . . . .	Dorothy Fontaine
Hospitality . . . . .	Ruth Small
Hall . . . . .	Eleanor McLaughlin
Orchestra . . . . .	Nicholas Megas
Favors . . . . .	Faye Postle
June 4 . . . . .	CLASS PICNIC
General Chairmen . . . . .	{Mary Brigida {Thomas Sparkes
June 5 Gymnasium . . . . .	FACULTY RECEPTION
June 5 Campus . . . . .	SENIOR SERENADE
General Chairman . . . . .	Pauline Murdoch
June 6 . . . . .	CLASS DAY
General Chairman . . . . .	Lora Von Bergen
June 6 . . . . .	GRADUATION
June 6 . . . . .	IVY MARCH
General Chairman . . . . .	Doris Burrell

## Significance of the Ivy March

The trumpet call represents the call of duty for the seniors.

The oak boughs, held by the freshman and sophomores, symbolize the everlasting protection of the college.

The daisy chain, carried by junior women, represents a guard of honor for the seniors.

The ivy, which is planted and also carried by the graduates, symbolizes the spirit of comradeship and good fellowship.

The Alma Mater, sung by the seniors at the conclusion of the march, signifies the continual renewal of their loyalty for the college.



# Graduate Students



The grad students have come and gone, but their memory lingers on. It's a nice memory too, a memory of a group of people who knew how to temper an otherwise too serious existence with a lot of laughs. They will certainly miss their "round-table" discussions, their political disagreements, their spaghetti suppers and all the other foolish little happenings which made the year a happy one. We wish them all the luck in the world, and say with all sincerity, "We'll miss you."

## Grief

Sweetheart,  
Hold this for me, please.  
It's just a mountain  
That I carry,  
And before it grow too  
Precious,  
Take it.

I have borne it  
Long enough.  
Ever since the heavy shovels  
Beat above her;  
Since that morning  
When I spurned you  
Long before I ever met you.

Sweetheart,  
Hold this for me please.  
It's just a mountain  
That I carry,  
And before it grow too  
Precious  
Take it.

A. S. A. '41



## Junior

President

Anthony Perry

Vice-President

Mary Kjellander

In this our junior year we have passed a milestone in our school life. For two years we have been students, now we are teachers. If anyone doubts it, let him consult the Training School children. They know, for they were the victims of our first attempts to impart knowledge to anyone.

Some of our future flying aces learned the A B C's of their profession in the new aeronautical course this year. Our ambitious geography classes enjoyed a most interesting field trip southward via bus, traveling through New York, Pennsylvania, Virginia, and Washington, D. C.





## Class

Secretary

Gloria Marshall

Treasurer

Joseph Murphy



Abreast of the times, as usual, we were very patriotic in our class social this year and celebrated in red, white, and blue. Recipients of free refreshments were drafted from a fish bowl. The Sophomore-Junior Prom turned into a "Midyear Mirage" on January 17th, when the students enjoyed one last fling before the fateful examination week.

Of course, this was the year that the girls graduated from oak boughs to the daisy chain at Commencement. Next year it's caps and gowns for all.

Three years are behind us, one is ahead. With eagerness we face that all-important Senior year and then — !

Gloria Marshall, Secretary.





## Sophomore

President

John Henry Fitzgerald

Vice-President

Madelyn Baker



The Sophomore Class, led again by that able and likable president, John Henry Fitzgerald, entered the 1940 school year with its characteristic enthusiasm and energy.

The "Gay-Nineties" Social, given on December 6, marked the beginning of a busy social year. In spite of the bad weather, the attendance was very large, and the "Boomps-a-Daisy" proved to be an excellent "ice-breaker".

The Sophomore-Junior Prom, January 17, was the social highlight of the entire school. Worried students forgot the impending midyears at the "Midyear Mirage" while dancing to the lovely strains of Bob Deknes's orchestra.





# Class

Secretary

Ruth Sinclair

Treasurer

Joseph Comerford



March 25 the highly entertainable and cultural chapel program, Truth and Consequences, was given. Witty Joseph Comerford served as a genial Master of Ceremonies, and made the innocent victims toe the mark. Nine gallant sophomores tried their best to answer impossible questions and having failed, paid the consequences in a very amusing manner.

Ruth Sinclair, Secretary.







## Freshman

President

Robert Clemence

Vice-President

Thereas Fallon

With the helpful guidance of the faculty and the upper classmen the Freshmen have concluded a successful year at Bridgewater.

The first social event was the Freshman Party which took place December 12, 1940. Members of the Sophomore class arranged a dance and supper, while the Freshmen presented an entertainment program. Discoveries of hidden talent were made, most of these being in the line of music which included singing, dancing, and the playing of different instruments. This gave us an opportunity to become better acquainted with each other.



# Class

## Secretary

Anastacia Coparon

## Treasurer

Earle Bagnall



The Freshman Social held on April 4, 1941 proved to be a success and showed the enthusiasm and interest of the class in school affairs.

The members of the class resolve to make Bridgewater proud of them as leaders in education.

Anastacia Coparon, Secretary.











## Students' Co-operative

President

Pauline Murdock

First Vice-President

Ruth Small

Second Vice-President

Winnie Taylor

A student does not need a special interest or a "try-out" to become a member of the largest and most active organization in the college. Upon entering Bridgewater, one automatically becomes a member of the Student Co-operative Association.

Governing the affairs of this vital organization is the Student Council, which is composed of the following members: the officers of the association, class presidents, representatives from the divisions of all classes, the president of Day Student and of Dormitory Councils, president of Men's Club, president of Women's and Men's Athletic Associations, executive editor of *Campus Comment*, editor-in-chief of *Alpha*, and the chairmen of standing committees.

Students and faculty members are urged to present their problems and suggestions to the Council through their representatives. Meeting twice each month, the Student Council discusses and acts upon all the matters concerning student life and welfare.

Those who attended S. C. A.'s Harvest Ball in October reaped a harvest of enjoyment.



# Association

Secretary

Gertrude Twohig

Treasurer

James Donahue



S. C. A. sponsored the Sue Hastings Marionette Show, which proved to be amusing and educational.

At Christmas time the Council conducted the annual drive to collect money for the needy, and bought gifts for members of the staff at Bridgewater, in recognition of their untiring service.

During the past year, the Student Council has made an earnest attempt to unify the student body; to establish a common interest and a singleness of purpose. The establishment of a strong, organized student cheering section at the basketball games, as well as the formation of the Petitions Committee, are examples of the manner in which this year's Council has tried to advance.

In addition to its many other functions, members of the Student Co-operative Association constantly and graciously act as hospitality committee to all visitors at Bridgewater.

Gertrude Twohig, Secretary.







## Day Students Council

President

Florence Kamandulis

Vice-President

Shirley Thompson

Marguerite Hallisey

Secretary

Mary Coveney

Treasurer

Anne King

The day students were represented this year by an active, energetic council elected from the freshman, sophomore, junior, and senior classes.

The year 1940 marked the official severance of relations between the commuters and their chief "modus operandi" of yesteryear — the railroad. Undaunted by this minor obstacle, the day students shifted their allegiance to the automobile.

Paradoxically, the most successful social undertaking of the Day Students occurred at night — the Jalopi Hop. Under the direction of capable committee members, the gym was transformed into the "wide-open spaces" by means of hiking students, jalopies, and a roadside stand. Everyone enjoyed dancing, entertainment, and refreshments.

The aim of all Bridgewater students is to uphold the many fine traditions which have been established. Social conditions are constantly changing and in order to adapt our dormitory life to these changes, we have a Dormitory Council. This organization has representatives from both dormitories, and their co-operation makes it possible to discuss problems and to make, revise, and enforce rules necessary for harmonious and pleasant dormitory life.

Dormitory Council had the pleasure of planning the Christmas banquet in the re-decorated dining hall this year. Open House, a popular autumn feature, was also received enthusiastically.

## Dormitory Council

President

Louise Stange

Vice-President

Elna Filipson

Secretary

Mary Connelly

Treasurer

Barbara Buffinton



# The Opening of a Door

It was a tropicwater day,

Transparent . . .

And I saw it all:

A white church on a mat green sofa,

A platform where some sleepy signposts sat,

A little car sparrowing from the street ahead . . .

And suddenly,

I felt the clear frivolity of noon

Whisper to the overgrown boy that was our bus,

But there was only time to murmur

"Don't!"

Before we had nuzzled her playfully

toward a pole.

Just like that:

Tap.....Tap

Which didn't even jostle us.

I saw it all

precise and sharp enough

to wind it back

And show again . . . only better.

But two were dead.

I

guess I saw it all.

A. S. A. '41









## French Club

Présidente

Liette Morin

1 ère vice-présidente

Mary Cingolam

2 ème vice-présidente

Alma Boisselle

Secrétaire

Ilmi Anderson

Trésorière

Nellie Kucinskis

Bibliothécaire

Barbara Moore

A quoi bon est le charpentier sans marteau ou le boucher sans couteau? Il serait de même si notre collège fut sans le Cercle Français.

Après une vingtaine d'années de "charité" et de "fraternité", il est évident que le Cercle fournit ses membres d'une richesse d'expériences qui sont indispensables dans la vie d'un étudiant de collège.

Pour ceux qui sont intéressés dans une culture féconde, il vaut la peine de prendre la qualité des membres du Cercle Français.

Ilmi Anderson, Secretary.

Science Club, under the capable guidance of Miss E. Irene Graves, spent another interesting year exploring the various phases of science.

Among the subjects of the meetings were the identification of insects and other arthropodes, a demonstration of soap making, and life histories of common moths and butterflies. Other topics consisted of the collection and preservation of the vascular plants, a demonstration in the greenhouse of how to make cuttings, and a quiz program. Social activities included a fall outing, a Christmas party and an annual marine picnic.

Helen Boyajian, Secretary

## Science Club

President

Betty Milne

Vice-President

Norma Wolfe

Secretary

Helen Boyajian

Treasurer

Arthur Applebaum





## Library Club

President

Elna Filipson

Vice-President

Louise Forsyth

Secretary

Phyllis Jacobson

Treasurer

Helen Swift



Library Club, with its enlightening discussions of the latest books and best sellers, has interesting programs devoted to various types of writings; club programs, given over to absorbing research into the man behind the book. Speakers who are interested in the field of literary advancement, inspired the club with some of their zeal.

In March the members of the Club, following the custom of past years, attended the production of "Cabin in the Sky," starring Ethel Waters.

Phyllis Jacobson, Secretary.

This year the Garden Club celebrated its twenty-eighth birthday with thirty energetic members.

Activities of the Club included a potato roast, a long tramp through the woods in search of mossy evergreens, and the annual trip to the Arnold Arboretum.

The year was climaxed with the Spring Flower Show, an event planned and executed by the members, and a most successful exhibit.

School room projects were studied, as well as garden club organization in general, in an effort to better equip members to carry on their interest after leaving college.

Eleanor Fulton, Secretary.



## Garden Club

President

Mary Cameron

Vice-President

Carolyn Turner

Secretary

Eleanor Fulton

Treasurer

Margaret Burns





## Dramatic Club

President

Leona Gregory

Vice-President

Lawrence Berch

Secretary

Mary Larkin

The Dramatic Club reaches all of the students in the college either directly by participation in plays, or indirectly by attendance at plays.

Miss Ruth Irma Low supervises the work of the club and directs the plays which the club produces. This year three plays were produced: the classical play, the Christmas play, and the modern play.

On November 15, *Pride and Prejudice* proved to be an overwhelming success, when it was presented in the auditorium with a cast of twenty-six actors and actresses.

The spring play, *George Gets Going*, was a comedy, successfully given to a very appreciative audience on May 16.

Meetings were held bi-monthly at which time short plays and dramatizations were given by members of the club.

The year was brought to an enjoyable conclusion at the annual banquet held in the gymnasium.

Mary Larkin, Secretary



# Campus Comment

Executive Editor

Dorothy Giddings

Assistant Editor

Bernard Kinsella

Business Manager

Joseph Plouffe



The members of the Campus Comment staff have been an unusually cooperative group. They have learned how to mix pleasure with work. Striving hard and overcoming difficulties, they have issued a very worthwhile edition bi-monthly.

In the early Fall a striking style show was presented in the Gymnasium. The club also conducted a semi-formal dance; the proceeds of these affairs were used in sending delegates to the Seventeenth Annual Convention of the Columbia Scholastic Press Association at Columbia University, New York. Members of the staff also attended the fall and spring meeting of the Massachusetts Teachers College Publications Association at Salem and Fitchburg.

A chapel program was given in the form of a newspaper play, written, directed, and acted by the newspaper staff. The annual banquet was given at the home of the Club adviser, Miss Lovett.

The present staff has made every effort to furnish the college with a good newspaper — the undergraduate members extend their heartiest wish for success to the Graduating Class of 1941!

Mary Larkin, Secretary.







## Topics of the Day Club

President

Morris Saxe

Vice-President

Marion Kelly

Secretary

Isabelle Hajjar

Treasurer

William Roulis

Are you well acquainted with current topics? It is the primary aim of the Topics of the Day Club to help its members make this acquaintance. As a means to this end, all members are given an opportunity to discuss pertinent questions of the day. The club believes that in this way, real thinking is started and interest is aroused so that members begin to take an active rather than a passive interest in current affairs.

The objectives of the club are to study the fundamentals of journalism and to develop an appreciation for good newspaper writing. These objectives are carried out through the medium of field trips, lectures, journalism, and in the publication of the "Bridgewaterite", a bulletin, the contents of which summarize the outstanding college activities.

This year the Press Club has enjoyed an active program, and through the progressiveness of its officers and members, has become one of the most popular clubs in the college.

A fall "get together", a Christmas tea, and a spring social were included in the Press Club social calendar.

Lois Pearson, Secretary.

## Press Club

President

Richard G. Durnin

Vice-President

Violet A. Porta

Secretary

Lois Pearson

Treasurer

James M. Lynch





# Newman Club

President

Tony Ceddia

Vice-President

Eleanor Gannon

Secretary

Marguerite Savaria

Treasurer

Joseph Horsely

Delegate

Margaret Hagerty



The Newman Club was formed for the purpose of furthering Catholic culture and ideas in non-sectarian colleges. Its constituency is the student body from which our officers are elected. Besides the regular officers we have chairmen of the various committees, such as: Charity, Social Service, Tryst Logos, etc. We are but one small part of a larger organization, national and international, with which our delegate keeps us in constant contact.

The past year has been a successful one with a week-end at New Hampshire University in November, a semi-formal dance in the winter, and a Communion Breakfast in the spring.

The Newman Club is very grateful to Mr. Davoren, the club adviser, for his helpful guidance throughout the past year.

Marguerite Savaria, Secretary.





## Menorah Society

President

Ruth Stone

Vice-President

Florence Harris

Secretary

Beatrice Robbins

Treasurer

Dorothy Stoler

The organization tried to further its cultural aim during the year by having interesting speakers at meetings. One of these was Dr. Kalmer Freedman who spoke to the members on "The Future of Jewish Youth".

Holidays were celebrated in the traditional manner. Ceremonies connected with particular festivals were observed at various meetings.

One of the social events of the year was a scavenger hunt held in Boston.

The final meeting in May was in the form of a farewell to the seniors. This was in charge of the newly inducted officers as follows: President, Marilyn Miller; Vice-president, Florence Harris; Secretary, Beatrice Levins; Treasurer, Shirley Goldsmith.

Beatrice Robbins, Secretary

German Club came through the 1940-41 season with a round of traditional events. It started with the new members initiation, fun for all (even new members) through the annual Hofbrau trip and accompanying tour of cultural activities in Boston. In between was the Christmas meeting full of its usual "gemütlichkeit"—good feeling, joy toward all—jolly Kris Kringle and his array of presents, Yuletide games, songs, and readings and the happy spirit of a happy people. Then there was the German Club Chapel program. Remember the Hofbrau scene of last year?

Carolyn Turner, Secretary.

## German Club

President

Lillian Warren

First Vice-President

Phyllis Jacobson

Second Vice-President

Gertrude Twohig

Secretary

Carolyn Turner

Treasurer

Mary Larkin

Librarian

Lea Hearn

Directors

Andrea Leeds

Amelia Acebo

Adviser

Miss Edith Bradford





## Women's Athletic Association

President

Mary Brigida

First Vice-President

Eileen Walsh

Corresponding Secretary

Agnes Richardson

Recording Secretary

Doris Burrell

Treasurer

Catherine McGloin



Over Hallowe'en week-end, 1940, the Women's Athletic Conference of the Massachusetts State Teachers Colleges was held here at Bridgewater. The theme of the conference, "Trends in Women's Athletics," was carried out by interesting and entertaining discussions, lectures, and demonstrations. As a result of this conference we all gained new friends, new ideas, and new information.

On January 27, 1941, another successful outing for W. A. A. was planned by Lea Hearn, head of outings. About thirty girls went by bus to the Boston Arena where they skated from eight o'clock until ten-thirty. There were no wintry blasts to mar their pleasure.

Horse-back riding and swimming were included in our schedule.

March brought a journey to Hyannis for a basketball play-day. We renewed acquaintances which had been formed at the W. A. A. Conference.

May and spring heralded a sports day at Salem.

A fitting climax to our program was our annual banquet and sports round-up in May, but a crowning success steeped in tradition and colorful pageantry was our biennial Campus Carnival under the skillful direction of Katherine Tiernan.

New heights of success were achieved during this eventful year in W. A. A.'s history.

Doris Burrell, Secretary







## Kindergarten- Primary Club

President  
Elizabeth Wood

First Vice-President  
Gloria Marshall

Second Vice-President  
Barbara Buffington

Recording Secretary  
Lois Smith

Corresponding Secretary  
Arline Adams

Treasurer  
Esther Boyden

For the tenth year, Kindergarten-Primary Club has brought together students interested in the Kindergarten and in the Primary grades.

During this anniversary year, we have had many interesting speakers who have kept us in touch with the progressive movements in this field.

In the fall, our Supper Hike initiated our new members into the social phase of Kindergarten-Primary Club. We held a Christmas Candlelight service at which Dr. Vernora Loeseher gave an inspirational talk. A game meeting, where we learned many new games for children, was fun.

At our tenth annual banquet, we welcomed back our former presidents.

Kindergarten-Primary Club has existed for ten years. We hope that it will live for many times that, and that it will mean as much to the members all along the way as it has meant to us.

Lois Smith, Secretary.



## Women's Glee Club

President

Nancy Hatch

First Vice-President

Faye Postle

Second Vice-President

Amelia Acebo

Secretary

Alice Bubriski

Librarians

Edna Dolber

Marie Sheehan



Members of the Glee Club returned from their summer vacation full of pep, vim and vigor. Interest in furthering Glee Club activities was at a new high. To meet qualifications necessary for a good club, we decided on two rehearsals weekly.

December was full of engagements. On December 8, we sang at the In and About Boston Music Education Club. We also gave a Christmas concert in Chapel, and at the party in the Albert Gardner Boyden Gymnasium, given by the faculty.

On May 2, we held our annual concert.

Baccalaureate Sunday saw us on the stage as we contributed to the graduation festivities.

To Miss Rand, our director, we, the members of both Glee Club and Orchestra, give our sincerest and warmest thanks for the inspiration she has given us. Her vitality, sense of humor, perseverance and faith in our ability have contributed greatly to our success.

Have you a hobby? We have — The aim of this club was to get those without a hobby to become interested in acquiring a worthwhile but entertaining hobby. Mr. Stearns, our club advisor introduced us to many interesting hobbies. Throughout the year, members talked about their hobbies and occasionally outside speakers were presented to the group. Refreshments served at our meetings added delicious delight. A Hobby Club Exhibition at the end of the year gave non-members a chance to see some of our work.



## Hobby Club

President

Phyllis Pray

Vice-president

Mary Ellard

Treasurer

Barbara Daly

Secretary

Charlotte Clark





## Men's Club

President

William Edgar

Vice-President

Charles Haley

Secretary

John J. Skahill

Treasurer

W. Wilbor Parkinson

Boyden Men's Club is designed to create a closer feeling of fellowship among the men of the college. Adopting the old proverb, "Everything comes to him who waits," seems to be the most appropriate. After waiting four years for a place to call their own, it looks as though a man's room at Bridgewater has become a reality. The comfortable chairs and pleasant surroundings have added greatly to the spirit and zeal of the men.

A place for lively discussions or a chance to study or doze is surely appreciated by the men.

Smokers and entertainments were held affording many enjoyable evenings, as good fellowship ran rampant.

The annual Father and Son Banquet and entertainment brought a successful year to a close. Highlighting the program were four Bridgewater alumni who have distinguished themselves in the field of education. Most outstanding of the group was Anson P. Handy recently elected President of The State Teachers College at Hyannis. The essence of his address was, "Playing the Game of Life." Completing the program was a movie "Highlights of Sports" which was thoroughly enjoyed by all.

## Men's Athletic Association

President

Thomas Sparkes

Vice-President

Charles Haley

Treasurer

Henry Barber

Secretary

James Donahue





## Basketball Team

Captain

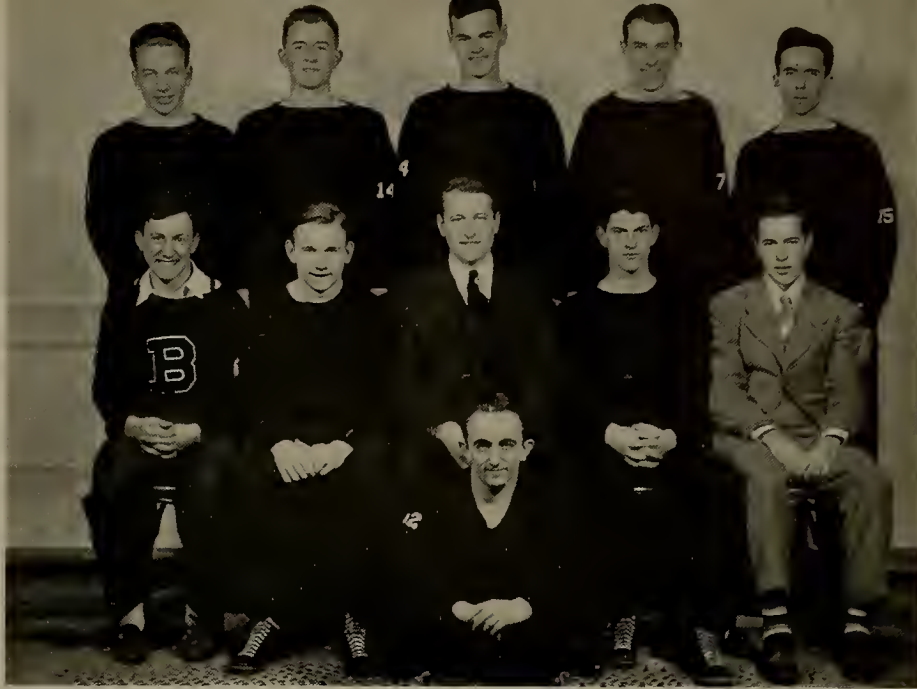
James Costigan

Manager

Gordon Johnson

Coach

Frederick Meier



The 1940-41 season opened a new era in B. T. C. athletic history. Closer co-operation, more spirit, and greater attendance at A. A. events showed that the student body fully realized and appreciated the prowess and sportsmanship of its gladiators. Veterans in every department, aided by a few new-comers, molded rapidly, under the finesse and experience of Coach Meier, into smooth working units. The year as a whole proved to be one of Bridgewater's most successful campaigns.

The soccer team, fighting hard, and losing few games, reached its peak with a double victory over strong A. I. C. Losing four-year stars Captain Jim, Bill and Mal along with Carey, Tom, Nick, and Arny leaves problems ahead for '41.

The basketball team rose to great heights, equalling the success of '39 by scoring victories over all its greatest rivals. Defenseemen Felch and Costigan, and scorers Sparkes, Martin, and Falloni furnished a thrill a minute in upsetting all Teacher College opponents. Graduation takes Tom, Pete and Nicky, but capable subs insure success in 1942.

Baseball was stronger than usual. Nine veterans, long on ability, short on luck. Departing Bill, Van, and Tom, all four-year men, will leave yawning gaps at key positions.

Among our memories: Men's sports nights, — select and successful A. A. dance — interclass basketball — conference conflicts — aspiring net-men.

James Donahue, Secretary



## Baseball

Captain

William Broadrick

Manager

David Barnum

## Men's Glee Club

President  
Secretary

Lee Fleming  
Freeman Smith

Vice-President  
Librarian

Charles Haley  
Joseph Horsely

Men's Glee Club was greatly weakened by the loss of the student leader, Lee Fleming.

Injections of new blood from the Freshman class caused the patient to rally, yet he never fully recovered. Weekly choruses from the north wing gradually diminished, and at mid-year merged into a mixed choir. Yet, under the never-tiring guidance and effervescent influence of Miss Rand, the spirit of the group lives on. Here may the men of the college still unite with their common love—a rousing song.

## Orchestra

Student Director  
Secretary and Librarian

Ina May Mosher  
Loretta Dupre

Assistant Student Director  
Manager

Lillian Russell  
Douglas Macdonald

The Orchestra appeared at the Dramatic Club performances and at community sings in Chapel.

At our spring concert, which was given March 21, the assisting soloists were George Wheeler, tenor, and Elizabeth Norcross Allen, harpist.

## Soccer

Captain

James Savage

Manager

Wilbur Parkinson







**Stooges**



**Graduation**



**Mowing 'em down!**

**Sporting**





# Alpha Board



Editor-in-chief

Business Manager

Advertising Manager

Literary Editor

Art Editors

Photography Editor

Treasurer

Secretary

F. Olive Hey

Henry Barber

Joseph Plouffe

Barbara M. Govoni

Agnes and Alice Richardson

Vernon West, '42

William Kearns

Leona Gregory

## ADVISERS

Miss Mary M. Triggs

Dr. Clement C. Maxwell

## UNDERGRADUATE MEMBERS OF THE BOARD

Assistant Editor

Assistant Business Manager

Assistant Advertising Manager

Assistant Literary Editor

Assistant Art Editors

Assistant Photography Editor

Velma Shorey

Frederick Martin

Charles Haley

Esther Boydan

Lysbeth Lawrence

John Henry Fitzgerald

Richard Durnin

## Explanation of the Book

The plates, "Classes", "S. C. A.", and "Activities", portraying the theme interests of these groups, have been designed and arranged by the Art Board.

Alice and Agnes Richardson, co-editors

Lysbeth Lawrence

John Henry Fitzgerald

We wish to thank Miss Graves for her assistance in photographing the work. This year we have a new cover, designed and executed by John Henry Fitzgerald. We are most appreciative of his untiring work.

## Home Work

Good, Frieda, My dear? Of course they are,  
And I love them every one as if they  
Were my own. But, of late, I've grown so far  
Away from them, that you may believe me when I say  
That the sight of each group entering my class  
Sends shivers of loathing up and down my spine,  
And it's all I can do to keep from hurling the glass  
Tubes and retorts at those innocents in the line.  
It isn't that I need a rest; I realize  
The work is light. It's just the thought that I  
Am stuck at sailor's pay here in this Junior High,  
Teaching a subject I so thoroughly despise . . .  
Oh, if that were money, all that paper there,  
We'd fly away and study languages somewhere!

A. S. A. '41



### MISS RUTH E. DAVIS

We are proud to welcome Miss Davis to the Administration building of the college; such an addition will certainly prove of great benefit to us. The class of '41 will be able to say, "We were the first to work with and receive guidance from Miss Davis as Supervisor of Training."

This is no formal greeting, for Miss Davis has been and will continue to be our teacher, friend, and counsellor as only one of her ability and experience is able.





MISS KATHERINE PACKARD

We are only one among many who are congratulating Miss Packard for her recent appointment to the principalship of the Training School. For one with such exceptional ability and personal charm, there can be no doubt as to the degree of her success.

# College Dance

Four o'clock.  
Too hot—  
Too hot for the thinkers to exercise.  
The ivy-grown gymnasium  
Beams with simulated happiness  
In the afternoon sun,  
Trying vainly to convince  
The skeptical buildings of the quad  
That it can be content  
Without gibbons swinging on its entrails  
And enfilading its great omentum.—  
Under the maples, the plaids  
And ginghamms scuff and giggle,  
Tilted noses under white sun-glasses  
Whirl and chatter,  
Pinks and purples,  
Whites and greens,  
Delighting passing motorists.  
Four o'clock . . .  
The decoration committee  
Enters the gym in listless two's  
Talking piccolo.  
The little one with the raucous laugh  
It telling something about last night,  
And her black eyes sing;  
The tall one with the sad gray eyes  
And narrow chest  
Nods vacantly, concentrating her mental forces  
On the thought of what she is going to say  
When she gets the chance.—  
Three others enter,  
Deploying their inanities in the far corners.  
Work begins slowly.  
Shouts, chatter,  
The drapes are out — laughter —  
And down with a sudden gush.  
(The small eupeptic one, sweating fiercely,  
Leaves to fix something)  
The scrape of the ladders,  
The sighing of paper festoons,  
The glare of the ruthless sun  
Making the dizened interior  
A lady seen too early in the morning.

More laughter,  
Desultory progress . . .  
Nine o'clock  
The usherettes  
Fidget nervously  
In the hallway,  
Dropping a useless word or two  
On the ticket-taker's table.  
Within, the band plays  
While a few early couples  
Scrape in the jaundice-light.  
Imperceptably, the dancers  
Double and redouble  
Like virus in agar  
Blare of the band  
Glare of the lights  
Stamp of the feet  
No-o end.

In the background,  
The faculty stand  
In the receiving line,  
Turn, smirk,  
Turn, and smirk again,  
Like embryos in formalin  
When the bottle is tapped.—

BLARE OF THE BAND  
GLARE OF THE LIGHTS  
STAMP OF THE FEET  
NO-O END.

Down in the men's room  
The blind dates  
Smoke with desperate drags,  
Cursing the slowness of the evening,  
This one's knobby knees,  
That one's basilisk breath.

BLARE OF THE BAND . . .

Three o'clock—  
The darkness sits upon the quad  
Like some dumb gob  
Astride a cloven world.  
The maple wraps one tired arm  
About the back of the sleeping gym,  
And dozes . . .

A. S. A. '41



# A Centennial Pageant

## THE FIRST CENTURY

For the golden century given to us  
We, in turn, raise high the torch  
Of Education.

## OPENING DANCE — GREETING

Prologue

## PART I

Historical

Let these traditions of mind and spirit  
Light yet another cycle of the years.

This part shows the gifts from the State of Massachusetts and from the Town of Bridgewater which made possible the founding of the Normal School. It also shows the generous gifts of the alumni after the fire of 1924 which helped to re-establish the school in its new setting. The graduation scenes show how the graduates of Normal School and College through a century have gone out into the public service, both into schools and into patriotic service.

### Episode I. General Court—1838

In the old State House a committee of the General Court discusses the new idea of Horace Mann that the State should establish Normal Schools. They vote a grant of money for this purpose. The first Normal Schools of America are thus constituted.

### Episode II. Town Meeting—1839

The people of the Town of Bridgewater gather in Town Meeting. They debate whether and how they shall secure the new Normal School for their town. They vote money as a loan to help in building the new school, and disperse. This location has been unchanged for 100 years.

### Episode III. Early Graduation Scene—1848

In 1846 was built the first building in America to be erected to house a State Normal School. In this building, under Principal Nicholas Tillinghast, a class graduates. The graduates of this period went out into town, village, and country schools of the period.

### Episode IV. Civil War Graduation Scene—1862

In 1862, in the midst of the Civil War, Mr. Albert Gardner Boyden was Principal. Some young men left the School to join the United States Army. Their patriotism is honored by the playing of "Taps" and the reading of the roll of those who made the supreme sacrifice. Other graduates went out into the newly graded schools, there to serve their country by educating its youth.

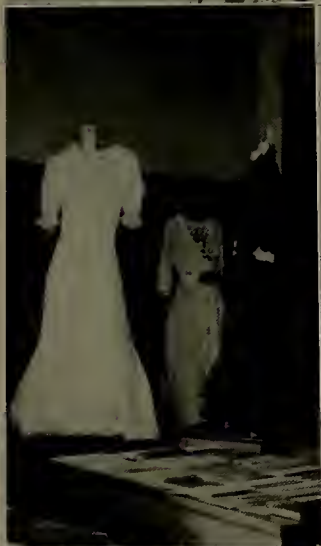
### Episode V. Graduation Scene—1918

Again in 1918, war claimed the service of patriotic youth. Many graduates and undergraduates went into the army, some giving their lives. Dr. Arthur Clarke Boyden was now Principal. We see the graduation exercises suggested and the enlisting of young men. Other graduates were eagerly sought for teaching positions.

### Episode VI. Fire Scene—1924

In 1924 occurred the disastrous fire that destroyed three buildings. Students in quiet and orderly fashion departed to their homes, to be soon recalled to the makeshift classrooms and rapidly growing equipment furnished by the generosity of the townspeople, alumni, and State. We see representatives of the alumni bringing gifts.

The new buildings were beautified by the Alumni decorations and other gifts. These decorations are represented by the tableau of the central mural from our auditorium.



Centennial



## Episode VII. Graduation Scene—1940

This episode shows the graduation of the present. The Normal School has become a Teachers College; we now see the academic procession. But the graduates, like all those of the past century, still carry the Bridgewater Spirit into the communities they serve.

## PART II

### World Influences

From distant lands, from earlier times,  
Come to this place the three-fold treasure  
Mind, Heart, Spirit.

Horace Mann enters. As he writes his "Seventh Report", in which he urges the establishment of Normal Schools, he recalls what he saw in Europe, and meditates on the future of teacher-training institutions.

### Episode I. The educational ideas of central Europe—

Symbolized by Froebel and his school.

Froebel, and his work with children and with student-teachers, typifies the best in European ideals which Horace Mann brought back from his trip abroad.

He remembers

Fraulein Louise Levin (Froebel's Assistant) and student-teachers enter. Froebel enters with children, who play two kindergarten games. Visitors watch. (Middendorf, Poesche, Dr. Kuehner, Dr. Benfey, Baroness von Marenholtz Buelow). Froebel greets visitors and a tardy child. All the children gather around him. The episode closes with a tableau, as Froebel "looks to America for the fulfillment of his dream."

### Episode II. The heritage of other cultures—

Symbolized in song and dance.

Through the century, Bridgewater has received the children of many nations. Each group has enriched the life of the school by contributions from its national culture. Bridgewater, like America itself, has become a fusion of many racial strains. This enrichment is symbolized by the songs and dances from many nations, all represented at some time in the student group. The order is as follows:

Koiviston Polka, Finnish Folk Dance  
Pepolele, Armenian Dance  
Hatikyoh, The Jewish Anthem  
Gavotte, French Court Dance of the 18th Century  
Tarantella, Italian National Dance  
Rapariga Tola Tola, Portuguese Folk Song  
Noh Dance, Japanese Dance of the Theater  
Hambo-polska, Swedish Couple Dance  
Kirby Malzeard, English Sword Dance  
Irish Reel  
Swing Low, Sweet Chariot, Negro Spiritual

At the close, the entire group enters the school in an informal procession.

### Episode III. The Bridgewater Influence—

Symbolized by moving tableaux

As the school has received the cultures of many lands, so her children, in their turn, have gone to many places far and near, carrying the Spirit of Bridgewater into our own and other lands. In some of these countries our students have been pioneers in forming new Normal Schools for training native teachers.

The groups in the large semi-circle represent England, France, Mexico, Japan, India, and America. Graduates of different periods come out of the school, and go toward these groups, forming tableaux which symbolize their service to these races. The last two represent the many graduates who are going and will continue to go all over our own country, carrying with them their motto, "To minister."





**Green - What  
do you think?**



**Tilly Grads**



**Come  
and  
Get It!**



**Worm's Eye Views**



**Our Gang**

## PART III

The School of Today and Its Contributions  
to the Future.

Still burns the flame lighted in other times

(Enter) Fed by the minds' riches from other lands

We are the Present, illumed by a radiant Past

Face-forward to a shining Future.

Pass on this torch!

In this part, the College shows its present modern spirit, and its outlook toward the future. It adopts the well-known "purposes of Education in a Democracy" as the basis for its forward look. These are presented in four floats, each showing one of these purposes.

Let no one think that the Bridgewater Spirit lives in the past.

### Float I. Self-Realization

A student peering into a telescope, a tiny girl admiring a huge flower, another speaking through a microphone, a boy studying with a microscope and a girl playing at archery, show that modern education aims to develop an Inquiring Mind, Appreciation of Beauty, the Ability to Speak Clearly and Read Efficiently, Intellectual Interest, Participation in Sports, and an Interest in Health.

### Float II. Human Relationships

This float shows both school and home. Children discuss their work around a study table, others play together, and the older girl is designing draperies for a home. Thus in modern education children learn the value of Courtesy, Working and Playing Together, the Enjoyment of Friendship, and Appreciation of the Home.

### Float III. Economic Efficiency

The girl typing, a child doing business at a teller's cage, another making a purchase at a store, with a factory suggested by construction show that modern education trains children as future producers and consumers. It helps each child to improve his efficiency, to know the value of work, to select his occupation wisely, to become a skillful buyer, and to have a sound standard of living.

### Float IV. Civic Responsibility

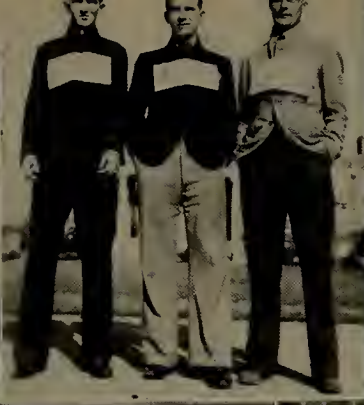
This float presents the circle, which symbolizes the intangible, together with the surveyor's instrument, and the evergreen tree. By these we show that the schools foster civic responsibility through the cultivation of Tolerance, Civic Planning, World Citizenship, and the Conservation of Natural Resources. As a result we hope to find the child appreciative of our Democratic Government.

### Epilogue

## CLOSING DANCE — FAREWELL

## ALMA MATER





## Stepping Out

## Duets

## State Institutions



## Spring Fever



## Training





## Autographs

## Autographs

## Autographs



# Social Calendar

September	20	.	.	.	.	.	.	Acquaintance Social
September	26	.	.	.	.	.	.	Freshman Initiation Party
October	2	.	.	.	.	.	.	Campus Comment Style Show
October	4	.	.	.	.	.	.	Senior Social
October	11	.	.	.	.	.	.	Columbus Day comes the 12th
October	18	.	.	.	.	.	.	S. C. A. Formal
October	25	.	.	.	.	.	.	Plymouth County Teachers Association Convention
November	1-2	.	.	.	.	.	.	W. A. A. Conference
November	3	.	.	.	.	.	.	Dormitory Open House
November	8-11	.	.	.	.	.	.	Long week-end — Armistice Day Alumni week-end
November	15	.	.	.	.	.	.	Dramatic Club Play
November	16	.	.	.	.	.	.	Alumni Tea Dance
November	22	.	.	.	.	.	.	Junior Social
November	29—December 2	.	.	.	.	.	.	Thanksgiving Recess
December	6	.	.	.	.	.	.	Sophomore Social
December	13	.	.	.	.	.	.	Campus Comment semi-formal
December	19	.	.	.	.	.	.	Christmas Banquet
December	30—January 5	.	.	.	.	.	.	Christmas Recess
January	17	.	.	.	.	.	.	Sophomore-Junior Promenade
January	24	.	.	.	.	.	.	End of Semester
February	7	.	.	.	.	.	.	Day Student Social
February	14	.	.	.	.	.	.	M. A. A. Formal
February	21—March 3	.	.	.	.	.	.	Mid-term recess
February	26	.	.	.	.	.	.	Beginning of Lent
March	21	.	.	.	.	.	.	Orchestra Concert
March	28	.	.	.	.	.	.	End of third quarter
April	4	.	.	.	.	.	.	Freshman Social
April	10-21	.	.	.	.	.	.	Good Friday and Easter
April	25	.	.	.	.	.	.	Spring Recess
May	2	.	.	.	.	.	.	Glee Club Concert
May	9	.	.	.	.	.	.	Alpha Semi-Formal
May	16	.	.	.	.	.	.	Dramatic Club Play
May	30	.	.	.	.	.	.	Memorial Day
May	31	.	.	.	.	.	.	Alumni Day
June	1	.	.	.	.	.	.	Baccalaureate
June	2	.	.	.	.	.	.	Senior Promenade
June	4	.	.	.	.	.	.	Senior Picnic
June	5	.	.	.	.	.	.	Faculty Reception
June	6	.	.	.	.	.	.	Commencement

# Directory for Alpha

## FACULTY

Arnold, Joseph I.	24 Grove Street, Bridgewater
Bradford, Edith H.	111 Bedford Street, Bridgewater
Caldwell, Mary Isabel	15 Spring Hill Avenue, Bridgewater
Carter, Julia C.	49 South Street, Bridgewater
Davis, Ruth E.	318 Summer Street, Bridgewater
Davoren, John L.	59 Bedford Street, Bridgewater
Decker, Lois L.	15 Spring Hill Avenue, Bridgewater
Doner, Charles E.	43 Scotland Road, Reading
Durgin, George H.	68 Shaw Road, Bridgewater
Graves, E. Irene	237 Summer Street, Bridgewater
Hill, M. Katherine	49 South Street, Bridgewater
Huffington, Paul	173 Pleasant Street, Bridgewater
Hunt, Brenelle	57 Spring Hill Avenue, Bridgewater
Kelly, John J.	Gates House, Bridgewater
Lovett, Olive H.	36 Shaw Road, Bridgewater
Low, Ruth Irma	56 Bennett Street, Wakefield
Lutz, Iva V.	111 Bedford Street, Bridgewater
Mahoney, Marie P.	Woodward Hall, B. T. C., Bridgewater
Maxwell, Clement C.	11 State Street, Taunton
McGurren, William	44 South Street, Bridgewater
Meier, Frederick A.	527 Pine Street, Whitman
Nutter, Dorothy D.	264 Summer Street, Bridgewater
Nye, Priscilla M.	147 Summer Street, Bridgewater
Pope, S. Elizabeth	15 Spring Hill Avenue, Bridgewater
Rand, Frieda	37 Church Street, Bridgewater
Smith, Mary V.	82 Larch Road, Cambridge
Stearns, Louis C.	206 Park Avenue, Bridgewater
Triggs, Mary M.	191 Newbury Street, Brockton
Tyndall, Balfour S.	200 South Street, Bridgewater

## TRAINING SCHOOL FACULTY

Allen, Gladys L.	Woodward Hall, Bridgewater
Borchers, Louise H.	15 Clarence Avenue, Bridgewater
Lindquist, Evelyn R.	70 Grove Street, Bridgewater
Lockwood, Neva I.	12 Maple Avenue, Bridgewater
Marks, Mary L.	45 Bedford Street, Bridgewater
Packard, Katherine	63 Walnut Street, Abington
Riddell, Grace E.	Woodward Hall, Bridgewater
Rogers, Gertrude M.	49 South Street, Bridgewater
Sleeper, Helen E.	37 Church Street, Bridgewater
Smith, Grace E.	29 Park Street, Rockland
Thompson, Charlotte H.	25 Grove Street, Bridgewater
Warner, A. Mabelle	122 Maple Avenue, Bridgewater

## GRADUATE STUDENTS

Bigoness, Joseph William	246 Newbury Avenue, North Quincy
Gerry, Zenon Andrew	810 Pleasant Sareet, Brockton
Gordon, Charles Jacob	187 Cabot Street, Roxbury
Guindon, Francis Xavier	15 Wilcox Road, Dorchester
Hodgdon, John Goebel	19 Webster Street, Whitman
Kearns, Roland Gerard	19 Emery Street, Brookville
Lohrer, Martin Ruoff	3 Adams Circle, Jamaica Plain
Magistrate, Helen Claire	29 Wall Street, Bridgewater
Manter, Loretta Whiton	23 Anawan Street, Taunton
Marden, William Henry	Broadway, Stoughton
McCourt, Mary Gertrude	1203 Boylston Street, Boston
Pierce, Harold Eustace	33 Clarence Avenue, Bridgewater
Rodgers, William Herbert	242 School Street, Taunton
Siegle, Peter Eugene	128 University Road, Brookline

# CLASS OF 1941

Acebo, Amelia Antonia . . . . .	34 Grossman Street, Quincy
Anderson, Ilmi . . . . .	120 Elm Street, Wareham
Applebaum, Arthur Samuel . . . . .	37 West Tremlett, Dorchester
Backman, Melvyn Abraham . . . . .	18 Hanover Circle, Lynn
Barber, Henry Joseph . . . . .	22 Winter Street, Pittsfield
Berch, Lawrence . . . . .	41 Evelyn Street, Mattapan
Borges, George . . . . .	6 Pleasant Street, Dighton
Brigida, Mary Annina . . . . .	12 Water Street Extension, Plymouth
Broderick, William John Jr. . . . .	392 High Street, Bridgewater
Brown, Edna Louise . . . . .	286 Whitwell Street, Quincy
Brush, Cary Wentworth . . . . .	Church Street, East Raynham
Buffington, Barbara Edith . . . . .	Fall River Avenue, Seekonk
Burrell, Doris Lillian . . . . .	164 East Street, East Walpole
Cameron, Mary Eleanor . . . . .	35 Chapel Street, Gloucester
Ceddia, Antonio John . . . . .	59 Hull Street, Boston
Childerhose, Peggy Jean . . . . .	86 Bromfield Street, Wollaston
Clark, Charlotte Mary . . . . .	74 Evans Street, North Weymouth
Clouter, Malcolm Wilmont . . . . .	Main Street, Marion
Connelly, Mary Antonia . . . . .	84 Bartlett Street, Somerville
Coveney, Mary Bernedette . . . . .	30 Riley Avenue, East Weymouth
Crean, Eileen Virginia . . . . .	587 Canton Street, East Stoughton
Doble, Muriel Elizabeth . . . . .	494 Pleasant Street, South Weymouth
Donahue, James Patrick . . . . .	93 Chester Avenue, Chelsea
Donaher, Kathrin Honora . . . . .	50 Saville Avenue, Quincy
Drummy, Mary Elizabeth . . . . .	11 Miller Avenue, East Braintree
Dunkerley, Alice Constance . . . . .	6 Somerset Place, Brockton
Durgin, Jeannette Louise . . . . .	84 Brow Avenue, South Braintree
Edgar, William John . . . . .	144 Howard Street, Ludlow
Ellard, Mary Elizabeth . . . . .	248 Presidents Lane, Quincy
Fahey, Ellen Frances . . . . .	431 North Main Street, Randolph
Fahnley, Franklin Edward . . . . .	38 Edwin Street, Dorchester
Felch, Loring Oliver . . . . .	14 Custer Street, Brockton
Fields, Ethel C. . . . .	131 Green Street, Brockton
Filipson, Elna Linnea . . . . .	Box 86 West Street, Attleboro
Finn, Mary Janice . . . . .	225 High Street, Canton
Fiske, Helen Marie . . . . .	133 Robbins Street, Waltham
Fitzgerald, Rita Irene . . . . .	241 Columbian Street South Weymouth
Fontaine, Dorothy Ida . . . . .	166 Clara Street, New Bedford
Forsyth, Louise Bernie . . . . .	221 Whitwell Street, Quincy
Fulton, Eleanor . . . . .	Beechwood Street, Cohasset
Gamperoli, Mary Ellen . . . . .	450 Main Street, Bridgewater
Giddings, Dorothy . . . . .	45 Taconic Avenue, Great Barrington
Govoni, Barbara Mae . . . . .	77 Grant Street, Somerville
Gregory, Leona Anne . . . . .	1034 Washington Street, Weymouth
Hallisey, Marguerite Ann . . . . .	494 Warren Avenue, Brockton
Harju, Linnea Elizabeth . . . . .	39 Pine Avenue, Brockton
Hatch, Nancy Vere . . . . .	39 Grand View Avenue, Wollaston
Hawes, Florence Mae . . . . .	590 Broad Street, East Weymouth
Healey, Lucille Frances . . . . .	17 Irving Street, Waltham
Hey, Frances Olive . . . . .	123 Union Street, Bridgewater
Hull, Virginia Bickford . . . . .	32 Spruce Street, Watertown
Jacobson, Phyllis . . . . .	118 Carol Avenue, Brockton
Johnson, Phyllis Maxine . . . . .	23 Brewster Street, Plymouth
Kallaghan, Louise Ann . . . . .	1218 Sea Street, Weymouth
Kamandulis, Florence Anne . . . . .	13 Morgan Street, Brockton
Kearns, William Thomas . . . . .	14 LaFayette Avenue, East Weymouth
Kelly, Marion Josephine . . . . .	70 Holyoke Street, North Quincy
Kenney, Doris Louise . . . . .	11 Albion Road, Wollaston
King, Ann Loretta . . . . .	63 California Avenue, West Quincy
Krupka, Felicia Rosalie . . . . .	7 Fitch Terrace, Randolph
Kucinskis, Nellie Jennie . . . . .	382 Lincoln Street, Stoughton
Kyte, Mary Frances . . . . .	108 Myrtle Street, Waltham



Larkin, Mary Evelyn . . . . .	35 Brunswick, Brockton
Lyons, Patricia Ann Elizabeth . . . . .	40 Standish Street, North Weymouth
Mackey, Estelle Ann . . . . .	31 Garfield Avenue, Somerset
Madan, Marion E. Patricia . . . . .	77 Pleasant Street, Randolph
Maiaowski, Camella Rosalyn . . . . .	South Deerfield
Martin, Ilene Agnes . . . . .	1264 South Main Street, Brockton
Marvil, Lucille Louisa . . . . .	Turnpike Street, Eastondale
MacDonnell, Malvena Elizabeth . . . . .	16 Stratford Road, North Weymouth
McGuire, Mary Catherine . . . . .	105 Bigelow Street, Fall River
McKeachern, Avis Dinsmore . . . . .	239 Arnold Street, New Bedford
McLaughlin, Eleanor . . . . .	180 Hancock Street, Stoneham
Megas, Nicholas . . . . .	114 Rock Street, Lowell
Milne, Betty . . . . .	168 Sea Street, Quincy
Mitchell, Gertrude Mary . . . . .	6 Bigelow Street, Quincy
Morin, Liette Marie . . . . .	61 Wyman Street, Brockton
Mosher, Ina May . . . . .	420 Crescent Street, West Bridgewater
Murdock, Pauline Louise . . . . .	632 Canton Avenue, Milton
Nash, Carolyn . . . . .	34 Chestnut Street, Brockton
Nolan, Catherine Jane . . . . .	Center Street, East Weymouth
Nutter, Ruth Hazel . . . . .	64 Elm Street, Norwood
O'Byrne, Sadie Josephine . . . . .	735 Pleasant Street, Brockton
O'Grady, Rita Mary . . . . .	69 Vine Street, New Bedford
Olenick, Madeline Elizabeth . . . . .	17 Gaudette Street, Brockton
Oliver, Arnold Domingo . . . . .	32 Standish Street, Provincetown
Olson, Eleanor Caroline . . . . .	174 East Spring Street, Avon
Owens, Elizabeth Ann . . . . .	15 Harding Street, Lowell
Paquette, Normand Charles . . . . .	6 Chapel Street, Taunton
Parkinson, Walter Wilbur . . . . .	32 Linden Avenue, Fairhaven
Patenaude, Claire Gertrude . . . . .	222 Broadway, Taunton
Plouffe, Joseph Francis . . . . .	59 Howard Street, Brockton
Postle, Elizabeth Faye . . . . .	25 Laurel Avenue, Brockton
Pratt, Suzanne Frances . . . . .	Plymouth Street, East Carver
Pray, Phyllis Stuart . . . . .	16 Rosalind Road, North Weymouth
Reed, Jeanette Leda . . . . .	394 Quarry Street, Quincy
Richardson, Agnes Theresa . . . . .	20 Perkins Street, Melrose Highlands
Richardson, Alice Currier . . . . .	20 Perkins Street, Melrose Highlands
Roach, Marguerite Catherine . . . . .	682 Eastern Avenue, Fall River
Robbins, Beatrice . . . . .	50 Hunt Street, Brockton
Rogers, Lillian Goodnough . . . . .	2041 South Street, Bridgewater
Rosequist, Donald . . . . .	706 West Main Street, Avon
Rowe, Eileen . . . . .	30 Maple Avenue, Bridgewater
Roy, Jean Marie . . . . .	Burns Avenue, East Walpole
Rubolino, E. Louise . . . . .	189 North Warren Avenue, Brockton
Savage, James Melvin . . . . .	80 Graham Street, Quincy
Sawicki, Edward Walter . . . . .	547 Center Street, Middleboro
Saxe, Morris . . . . .	1232 Blue Hill Avenue, Mattapan
Sclarenco, Irving . . . . .	11 Massachusetts Avenue, Quincy
Shaff, Sylvia Hilda . . . . .	21 Washington Street, Taunton
Skahill, John Joseph . . . . .	5 Everett Street, Wellesley
Small, Ruth Edna . . . . .	New Braintree
Smarsh, Anne . . . . .	390 Bedford Street, Middleboro
Smith, Mary Elizabeth . . . . .	Pleasant Street, Holbrook
Sparkes, Thomas Michael . . . . .	3 Grant Street, Taunton
Stange, Louise Adelaide . . . . .	Hillside Road, North Deerfield
Stoler, Agnes Dorothy . . . . .	112 Main Street, Quincy
Stone, Ruth Rosalyn . . . . .	217 Belmont Avenue, Brockton
Sullivan, Esther Bernadette . . . . .	55 Bigelow Street, Fall River
Taylor, Winifred Florence . . . . .	44 Richmond Street, Brockton
Thompson, Shirley Arlene . . . . .	8 Drinkwater Avenue, Braintree
Turner, Carolyn Underwood . . . . .	76 Shore Street, Falmouth
Twohig, Gertrude Alice . . . . .	82 Manomet Street, Brockton
Tyndall, Rowland Henry . . . . .	Maple Avenue, North Bellingham
Van Annan, Robert Edward . . . . .	20 Ashmont Street, Dorchester

Von Bergen, Lora . . . . .	124 Marlborough Street, Wollaston
Walsh, Eileen Josephine . . . . .	132 Elliot Avenue, North Quincy
Warren, Lillian Sylvia . . . . .	240 Center Street, Brockton
Welch, Harriet Chace . . . . .	Chase Road, East Freetown
Weston, Arlene Elizabeth . . . . .	22 Woodside Avenue, Brockton
Wolf, Norma Isabel . . . . .	60 Massachusetts Avenue, Quincy
Wood, Elizabeth Burnham . . . . .	74 Nesmith Street, Lawrence
Zoslosky, Anastacia . . . . .	27 North Pleasant Street, Taunton

#### CLASS OF 1942

Adams, Arline . . . . .	350 Beacon Street, Waltham
Adams, Erdine Lilly . . . . .	Turnpike Road, Ashby
Arnold, Violet . . . . .	Williamsburg
Barry, Edward Francis . . . . .	39 Quincy Avenue, Quincy
Bartley, Elizabeth Ursula . . . . .	Water Street, Sandwich
Bernstein, Gloria Pearl . . . . .	46 School Street, Fall River
Besbris, Beatrice . . . . .	Hall Street, Raynham
Boiseelle, Alma Claire . . . . .	5 Benjamin Street, Haverhill
Botan, Frances Bernice . . . . .	187 Glenway Street, Dorchester
Boyajian, Helen Grace . . . . .	11 Bass Street, Wollaston
Boyden, Esther Dodge . . . . .	Church Street, Boylston
Bubriski, Alice Agnes . . . . .	Kirk Street, Housatonic
Buckley, Thomas Anthony . . . . .	10 Greenley Place, Jamaica Plain
Burns, Margaret Mary . . . . .	Turnpike Street, Newbury
Carlisle, Ruth . . . . .	167 Warren Avenue, Wollaston
Casey, Mary Elizabeth . . . . .	14 Plymouth Street, North Abington
Cingolani, Mary B. . . . .	15 Howland Street, Plymouth
Colella, Frank James . . . . .	196 Salem Street, Boston
Condric, Florence Fonora . . . . .	606 Main Street, South Weymouth
Connell, Anne Frances . . . . .	18 Hillcrest Road, East Weymouth
Costello, James William . . . . .	735 Highland Avenue, Malden
Cote, Pearl Agnes . . . . .	81 Broadway, Raynham
Cummings, Eileen Margaret . . . . .	202 Prospect Street, Brockton
Daly, Barbara Ann . . . . .	64 Summer Street, Stoughton
De Avellar, Esther Agnes . . . . .	220 Atlantic Street, North Quincy
della Salla, Justine Victoria, II . . . . .	29 Union Terrace, Forest Hills
Dix, David Frank . . . . .	497 Hancock Street, Wollaston
Doyle, Eileen Mary . . . . .	87 Hazard Street, New Bedford
Dupre, Loretta Gertrude . . . . .	1800 Summer Street, State Farm
Earle, Lillian Gertrude . . . . .	Foundry Street, Easton
Ellis, Phyllis . . . . .	Box 126, Orleans
Ferrini, Carmella Maria . . . . .	103 Copeland Street, West Bridgewater
Foley, William Joseph . . . . .	691 Union Street, Rockland
Gannon, Eleanor Mary . . . . .	19 Spruce Street, Braintree
Gloster, Mary Lane . . . . .	29 Granite Street, Weymouth
Godbout, Claire Marguerite . . . . .	Moran Street, North Attleboro
Goldstein, Wallace Leo . . . . .	520 New Boston Road, Fall River
Grand, Lillian . . . . .	585 Montello Street, Brockton
Haggerty, Margaret Marie . . . . .	96 Curlew Road, Quincy
Hajjar, Isabel Sophie . . . . .	124 Main Street, Quincy
Haley, Charles Francis . . . . .	87 West Street, Randolph
Hamalainen, Raakel Irene . . . . .	218 Granite Street, Quincy
Harrington, Kathleen Veronica . . . . .	103 Hanover Street, Fall River
Harris, Florence Adeline . . . . .	782 Morton Street, Mattapan
Hassett, Patricia Mary . . . . .	29 Benton Avenue, Great Barrington
Hathaway, Mary Elizabeth . . . . .	34 Maple Street, Taunton
Hilferty, Frank Joseph . . . . .	Main Street, Millis
Hokanson, Marion Elizabeth . . . . .	Taunton Street, Middleboro
Humphreys, Ruth Eleanor . . . . .	738 Rockdale Avenue, New Bedford
Hurley, Norma . . . . .	16 Central Square, West Bridgewater
James, Charlotte Elsie . . . . .	45 Birch Street, Ludlow
Johnson, Evelyn Louise . . . . .	545 Washington Street, Braintree
Johnson, Gordon Wallace . . . . .	61 Broadway, Arlington



Kapsis, Clara . . . . .	10 Fowler Street, Quincy
Kauppila, Esther Irene . . . . .	26 Harrison Street, Maynard
Kennedy, Loretta Genevieve . . . . .	124 Perry Street, Stoughton
Keyes, Natalie Louise . . . . .	72 Ash Street, Waltham
Kinsella, Bernard Harold Gregory . . . . .	63 Charles Street, Dorchester
Kjellander, Mary Haddock . . . . .	75 Independence Avenue, Braintree
Kobowska, Anna Helen . . . . .	55 Hollingsworth Avenue, Braintree
Lawrence, Emily Elizabeth . . . . .	1035 Washington Street, South Braintree
Levens, Beatrice . . . . .	89 Floyd Street, Dorchester
Lincoln, Wilhelmina Margaret . . . . .	1350 Pleasant Street, East Weymouth
Locantore, Carnella Patricia . . . . .	106 Prospect Street, Weymouth
MacDonald, Douglas Francis . . . . .	38 Kirkland Road, South Weymouth
MacDougal, Frank . . . . .	498 Columbian Street, South Weymouth
Mackinaw, Gertrude Louise . . . . .	47 Gordon Street, Brockton
Magina, Mary Julia . . . . .	29 Leonard's Court, Taunton
Mahoney, William May . . . . .	51 River Street, West Bridgewater
Malloy, Carolyn Elizabeth . . . . .	7 Summer Street, Medford
Marshall, Gloria Olson . . . . .	15 Forest Street, Whitinsville
Martin, Frederick Francis . . . . .	165 Congress Street, Chelsea
McGloin, Catherine Agatha . . . . .	592 Washington Street, Braintree
Melin, Ethel Victoria . . . . .	19 Windsor Street, Arlington
Merrill, Charles Donald . . . . .	21 Newbury Avenue, Atlantic
Murphy, John Joseph . . . . .	531 Crescent Street, Brockton
Napoleone, Umberto Victor . . . . .	17 Henchman Street, Boston
Noel, Harriette Arlene . . . . .	198 Broad Street, Bridgewater
Noel, Juliette Antoinette . . . . .	198 Broad Street, Bridgewater
O'Leary, Helen Marie . . . . .	4 Lincoln Road, Brockton
Oliver, Louise Beatrice . . . . .	75 West Elm Avenue, Wollaston
Olsen, Arthur Edward . . . . .	East Street, Wrentham
O'Neil, James William . . . . .	45 Phillips Street, Weymouth
Osharow, Sylvia . . . . .	60 Plymouth Street, Brockton
Pallatrone, Clara Tita . . . . .	6 High Street, Bridgewater
Parsons, Thelma Helena . . . . .	25A Pigeon Hill Street, Rockport
Paul, Evelyn Lorraine . . . . .	10 Upland Avenue, Bradford
Pearson, Lois Myra . . . . .	334 Winthrop Street, Medford
Perry, Anthony John . . . . .	113 Smith Street, Dighton
Pickett, Elizabeth Helen . . . . .	16 Guild Street, Quincy
Pinel, Priscilla . . . . .	15 Edison Park, Quincy
Quirk, Katherine Mary . . . . .	26 Grove Street, East Weymouth
Reed, Barbara Mae . . . . .	19 Forest Street, Whitman
Riley, George Fred . . . . .	829 Middleboro Avenue, Taunton
Rogers, Elizabeth Charlotte . . . . .	9 Burton Lane, Hingham
Roulis, William . . . . .	176 School Street, Brockton
Royal, Mary Patricia . . . . .	150 Agawam Street, Lowell
Rozenas, Louise Anne . . . . .	488 North Main Street, Raynham
Russell, Lillian May . . . . .	67 Edison Park, Quincy
Ryan, Mary Kathryn . . . . .	127 Manomet Street, Brockton
Sarris, Christos Theodore . . . . .	93 Mount Vernon Street, Lowell
Savaria, Marguerite Sylvia . . . . .	52 Rimmon Avenue, Chicopee
Schrader, Dorothy Virginia . . . . .	144 Marlboro Street, Wollaston
Sheehan, Mary Elizabeth . . . . .	68 Winthrop Street, Brockton
Wheridan, Katherine Ann . . . . .	5 Bent Avenue, Maynard
Wherwood, Dorothy May . . . . .	Wapping Road, Kingston
Shorey, Velma Marie . . . . .	111 Storrs Avenue, Braintree
Simon, Phyllis Marforie . . . . .	20 Lemoyne Street, Braintree
Slovins, Phyllis . . . . .	36 Deering Road, Mattapan
Smith, Edna Claire . . . . .	38 Ingall Street, Taunton
Smith, George Freeman . . . . .	Lake Street, Cotuit
Spearwater, Alma Louise . . . . .	7 Goodwin Street, Bridgewater
Stella, John Henry . . . . .	44 Broad Street Place, East Weymouth
Sullivan, Ruth Rita . . . . .	298 Center Street, Fall River
Swift, Helen Moyce . . . . .	P. O. Box 12, Falmouth
Thompson, Ruth Ursula . . . . .	374 Main Street, West Newbury



Tiernan, Katherine Ann . . . . .	27 Glenn Street, Whitman
Torrance, Arnold Francis . . . . .	30 Maple Avenue, Bridgewater
Walker, Eunice Eileen . . . . .	34 Adams Street, Fall River
Walsh, June Kathleen . . . . .	4 Couch Street, Taunton
West, Vernon Persse . . . . .	High Street, Haydenville
Whittier, June Estelle . . . . .	21 Keeley Street, Haverhill
Zilinski, Helen . . . . .	941 Central Street, East Bridgewater

#### CLASS OF 1943

Ash, Audrey . . . . .	57 Ruggles Street, Quincy
Baker, Madeline . . . . .	11 Davis Street, Plymouth
Banks, Jessie . . . . .	32 Oakview Terrace, Jamaica Plain
Baratta, Katherine . . . . .	22 Whiting Street, Plymouth
Bard, Grace . . . . .	108 Green Street, Woburn
Bendersky, Freda . . . . .	85 Poplar Street, Boston
Berg, Barbara . . . . .	High Street, Woods Hole
Bergeron, Robert . . . . .	607 North Montello Street, Brockton
Bothwell, Marion . . . . .	Curzon Mill Road, Newburyport
Byrne, Elizabeth . . . . .	48 Prospect Street, North Quincy
Campbell, William . . . . .	42 Church Street, Bridgewater
Canegaly, June . . . . .	Pine Street, Eastondale
Carracciolo, Elena . . . . .	45 Madison Street, East Weymouth
Cheromcha, Edward . . . . .	11 Annis Avenue, Brockton
Cohen, Shirley . . . . .	674 Rockdale Avenue, New Bedford
Comerford, Joseph . . . . .	10 Reed Street, Taunton
Coneys, Mary . . . . .	86 Weldo Street, Weymouth
Crosby, Anne . . . . .	600 County Street, Taunton
Cummings, Alyce . . . . .	167 Oak Street, Bridgewater
Cunningham, Martha . . . . .	4 Lillian Street, North Randolph
Dahill, Patricia . . . . .	179 Highland Street, Taunton
Davis, Ellen . . . . .	49 Greenbrier Street, Dorchester
Deknes, Robert . . . . .	334 South Street, Bridgewater
DeSorcie, Madeline . . . . .	Hancock Road, Hanson
Dolber, Edna . . . . .	23 Washington Avenue, Waltham
Dugger, Barbara . . . . .	164 Jerome Street, West Medford
Dunn, Quentin . . . . .	308 Maine Street, Bridgewater
Durnin, Richard . . . . .	11 Lockwood Street, Bradford
Eaton, Luella . . . . .	111 Hollis Avenue, North Quincy
Fallon, Eleanor . . . . .	18 Winthrop Avenue, Bridgewater
Fiorentini, Mary . . . . .	6 Garfield Street, Haverhill
Fishman, Sylvia . . . . .	404 Blue Hill Avenue, Roxbury
Fitzgerald, John H. . . . .	507 West Water Street, Rockland
Folloni, Lawrence . . . . .	61 Wall Street, Brockton
Fox, Robert . . . . .	162 Warren Avenue, Brockton
Fuller, Harriet . . . . .	37 County Street, Seekonk
Gargan, Marie . . . . .	Cape Street, East Lee
Gillis, Margaret . . . . .	208 High Street, Wareham
Glasle, Helen . . . . .	8 River Street, Greenfield
Godsill, Martha . . . . .	41 Grove Avenue, Brockton
Goldsmith, Shirley . . . . .	64 Oak Street, Plymouth
Gould, Priscilla . . . . .	106 County Street, Wareham
Hackett, Priscilla . . . . .	185 Dean Street, Taunton
Harding, Marguerite . . . . .	Main Street, Chatham
Hayward, Priscilla . . . . .	Belmont Street, South Easton
Hearn, Lea . . . . .	53 Thacher Street, Attleboro
Hedlund, Doris . . . . .	2 Hedlund Avenue, Braintree
Hey, Pauline . . . . .	81 Thornton Street, Wollaston
Horsley, Joseph . . . . .	57 Snell Street, Brockton
Howland, Barbara . . . . .	198 Lennox Avenue, Pittsfield
Howsberger, Marguerite . . . . .	42 Foye Avenue, Weymouth
Hurley, Thomas . . . . .	41 Bridge Street, Fairhaven
Joyce, Mary . . . . .	655 Summer Street, South Weymouth
Kamandulis, Elaine . . . . .	13 Morgan Street, Brockton

Kazmack, Wanda . . . . .	312 Harwich Street, New Bedford
Keane, Mary . . . . .	Vine Street, Brockton
Kearns, Rita . . . . .	114 Hawthorne Street, East Weymouth
Killory, Joseph . . . . .	173 Spring Street, Brockton
Kilmain, Phyllis . . . . .	34 Warwick Street, Wollaston
Kirslis, Genevieve . . . . .	48 Cottage Street, Bridgewater
Kuchmeister, Eleanor . . . . .	15 Willow Avenue, Winthrop
Lamb, Charlotte . . . . .	149 Norton Avenue, Taunton
Langley, Christine . . . . .	33 Snell Street, Brockton
Larson, Magda . . . . .	117 Mylord Street, Norwood
LeDuc, Phyllis . . . . .	1 Eaton Court, Winchester
Lemos, Edith . . . . .	Horse Neck Road, Dartmouth
Lindberg, Clare . . . . .	111 Waterson Ave., Wollaston
Lynch, James . . . . .	Plymouth Street, Abington
Macneeland, John . . . . .	29 Park Terrace, Bridgewater
Markey, Rheta . . . . .	22 South Street, Taunton
Mayo, Virginia . . . . .	Allen Road, Billerica
McMorrow, Doris . . . . .	934 Washington Street, Whitman
McSharry, Marjorie . . . . .	59 Academy Street, South Braintree
Mercer, Ellen . . . . .	3 Hartford Terrace, Dorchester
Messier, Grace . . . . .	191 Elm Street, New Bedford
Miller, Marilyn . . . . .	30 Oldfields Street, Dorchester
Moore, Barbara . . . . .	396 Pearl Street, Brockton
Morse, Serena . . . . .	188 Page Street, Avon
Nolan, Eileen . . . . .	599 Main Street, Somerset
O'Brien, Ann . . . . .	439 Moraine Street, Brockton
O'Donnell, Joseph . . . . .	17 Grand Street, Brockton
Pearce, Andrea . . . . .	15 Myrtle Street, Saugus
Pepe, Antoinette . . . . .	11 South Spring Street, Bradford
Pilshaw, Sybil . . . . .	16 Court End Avenue, Middleboro
Porta, Violet . . . . .	102 Walnut Street, Brockton
Powers, Randall . . . . .	558 North Main Street, Randolph
Regini, Mario . . . . .	North Spooner Street, Plymouth
Riley, Mary . . . . .	101 Baldwin Street, Charlestown
Rockwood, Mary . . . . .	102 Lakehurst Avenue, East Weymouth
Rose, Joseph . . . . .	14 New York Avenue, Oak Bluffs
Sardi, Mary . . . . .	12 Muldoon Court, Waltham
Scott, Mary . . . . .	1719 Liberty Street, South Braintree
Sears, Frances . . . . .	8 Granite Street, Norwood
Sheehan, Marie . . . . .	73 Beauchamp Terrace, Chicopee Falls
Sinclair, Ruth . . . . .	79 Adams Street, Waltham
Smith, Lois . . . . .	27 Suffolk Street, Springfield
Snow, Jean . . . . .	27 Spring Hill Avenue, Bridgewater
Sullivan, Barbara . . . . .	15 Beacon Street, Taunton
Sweeney, Winifred . . . . .	33 Rowe Street, Milton
Taylor, Natalie . . . . .	44 Richmond Street, Brockton
Tompkins, Jean . . . . .	328 Union Street, South Weymouth
Tootill, Kathryn . . . . .	355 Mount Hope, North Attleboro
Trehear, Ruth . . . . .	37 Oakcrest Road, South Weymouth
Wentworth, Amy . . . . .	75 Beech Avenue, Melrose
White, Elizabeth . . . . .	Pine Hill Road, Westport
Willett, Gertrude . . . . .	103 Broad Street, Whitman
Winslow, Helen . . . . .	39 West Chester Street, Nantucket
Wrenn, Irma . . . . .	140 Elliot Avenue, North Quincy
Yurkstas, Algirdas . . . . .	48 Cottage Street, Bridgewater

#### CLASS OF 1944

Alden, Arthur . . . . .	49 Courtland Street, Middleboro
Antone, Michel . . . . .	29 Slocum Street, Acushnet
Austin, Margaret . . . . .	645 County Street, New Bedford
Averill, Harry . . . . .	15 Cleveland Street, Taunton
Bagnall, Earle . . . . .	38 Bedford Street, Watertown
Bailey, Joyce . . . . .	747 South Street, Bridgewater

Beaupre, Pauline . . . . .	121 Locust Street, Holyoke
Benson, Eleanor . . . . .	7 Wilson Avenue, Braintree
Blaine, Eleanor . . . . .	51 Ford Street, Brockton
Blount, William . . . . .	East Main Street, Northboro
Boarn, Virginia . . . . .	91 Highland Avenue, Onset
Bordeaux, Eleanor . . . . .	Old Dana Road, Barre
Brady, Florence . . . . .	229 Belmont Street, Brockton
Brega, Evelyn . . . . .	113 Wheeler Avenue, Brockton
Britton, Everret . . . . .	128 Belair Street, Brockton
Bruni, Robert . . . . .	5 Acacia Street, Gloucester
Buck, Marcia . . . . .	Keyes Street, Oakland
Buckley, William . . . . .	19 Platts Street, North Abington
Burnley, Eleanor . . . . .	352 Warren Avenue, Seekonk
Buscom, Theo . . . . .	141 Oakland Avenue, Methuen
Buzzi, Marie . . . . .	11 Claren Street, Quincy
Campbell, Mary . . . . .	28 Harbor Villa Avenue, East Braintree
Carbonara, Pauline . . . . .	152 Lyman Street, Brockton
Carroll, Marjorie . . . . .	222 Summer Street, Bridgewater
Chassey, George . . . . .	247 Park Avenue, Bridgewater
Clapp, Elaine . . . . .	45 Johnson Road, North Weymouth
Clemence, Robert . . . . .	22 Laurel Avenue, Waltham
Clifford, Paul . . . . .	42 Ruggles Street, Quincy
Condrick, Dorothy . . . . .	606 Main Street, East Weymouth
Connelly, Robert . . . . .	246 Summer Street, Weymouth
Coporan, Anastasia . . . . .	334 Broadway Street, Haverhill
Coulombe, Fleurette . . . . .	619 County Street, New Bedford
Cushman, Ruth . . . . .	37 Hale Street, Bridgewater
Daunheimer, Alice . . . . .	298 Cabot Street, Holyoke
Dee, James . . . . .	400 High Street, Bridgewater
Diamond, Molly . . . . .	63 West Street, Brockton
DiMascio, Ilda . . . . .	973 Hancock Street, Quincy
Dolan, Arthur . . . . .	97 Ruggles Street, Quincy
Doran, Alice . . . . .	108 Washburn Street, Taunton
Downs, Beulah . . . . .	Wellfleet
Doyle, Helen . . . . .	501 East Seventh Street, South Boston
Dowd, Margaret . . . . .	545 Main Street, Bridgewater
Driscoll, Mary . . . . .	371 Middleboro Avenue, East Taunton
Dugger, Madeleine . . . . .	164 Jerome Street, West Medford
Durant, Rosemary . . . . .	884 Worthington Street, Springfield
Dzenowagis, Joseph . . . . .	112 Burrill Avenue, Bridgewater
Eagan, Marie . . . . .	301 High Street, Somerset
Fallon, Theresa . . . . .	18 Winthrop Avenue, Bridgewater
Farrell, Leonard . . . . .	254 Park Avenue, Bridgewater
Farrell, Mary . . . . .	783 Second Street, Fall River
Fihelly, Ruth . . . . .	23 Belmont Street, Rockland
Fanara, Josephine . . . . .	3 Duddey Avenue, Waltham
Fitzgerald, Mary . . . . .	20 Wibird Street, Quincy
Flaherty, Mary . . . . .	112 Bates Avenue, Quincy
Foley, Alice . . . . .	57 Highland Street, Norwood
Francis, Jean . . . . .	12 Allen Street, Gloucester
Francis, Lucille . . . . .	28 Sagamore Street, Dorchester
Franco, Sarah . . . . .	Hatchville Road, East Falmouth
Frazar, Edmund . . . . .	Harrison Street, Duxbury
Goldthwaite, Dorothy . . . . .	Pleasant Street, Dunstable
Gottschalk, Sophie . . . . .	23 Farrington Street, Brockton
Hayward, Helen . . . . .	39 Florence Street, Brockton
Herlihy, Ralph . . . . .	22 West Park Street, Brockton
Hill, Arlene . . . . .	93 Jacob Street, Brockton
Hinckley, Phyllis . . . . .	21 Bodwell Street, Dorchester
Hippler, Eleanor . . . . .	62 Beechwood Street, East Braintree
Hoye, Kathryn . . . . .	209 County Street, New Bedford
Iannoni, Mary . . . . .	16 Day Avenue, Brockton
Jenness, Phyllis . . . . .	Pleasant Street, South Natick



Johnson, Eileen	4 Bradford Street, Quincy
Karelitz, Shirley	66 Columbia Park, Haverhill
Keeler, Carolyn	11 High Street, West Bridgewater
Kennedy, Marie	10 Bowdoin Park, Dorchester
Kenslea, Laura	49 Capitol Street, Watertown
Kerr, Gladys	209 Main Street, Rockport
Kula, Catherine	59 Park Street, Taunton
La Belle, Dorothy	703 South Main Street, Randolph
LaCouture, Bernard	65 Brett Street, Brockton
Lanzillo, Charles	149 Chester Avenue, Chelsea
LeBeau, Inez	Main Street, Vineyard Haven
Loneragan, Claire	23 Olive Street, Brockton
Lopes, Olivio	198 Davis Street, New Bedford
Matta, Edna	33 East Canton Street, Boston
McKenzie, Harold	15 Spooner Street, North Easton
McNamee, Georgia	821 Center Street, Jamaica Plain
McNeill, Mary	36 Union Street, Randolph
Mezzanotte, Anna	4 Adams Street, Millis
Melliosm, Rose	519 Harrison Avenue, Boston
Moriarty, Mary	24 Lansdown Street, Brockton
Mullins, Alyce	Revere Street, Brockton
Mulvey, Jeanette	135 North William Street, Fairhaven
Murstein, Beatrice	59 Johnston Road, Dorchester
Nicholson, Ethel	470 Rear Hancock Street, North Quincy
Noonan, John	29 Winthrop Street, Brockton
O'Byrne, Frances	102 Division Street, Brockton
O'Neil, Ann	38 Adams Place, South Weymouth
Paradise, Ann	1333 Quincy Shore Boulevard, Quincy
Peltonen, Miriam	Prospect Street, South Easton
Pitaro, Mary	21 Lowell Street, Brockton
Plante, Marguerite	11 Bourne Street, Boston
Powell, Phyllis	19 Lois Street, Middleboro
Reilly, Mary	175 South Main Street, Randolph
Reynolds, Barbara	25 Old Westport Road, North Dartmouth
Roche, Marion	89 Perthshire Road, Brighton
Rowell, Edith	81 Vine Street, Weymouth
Ruboy, Lillian	8 Hiawatha Road, Mattapan
Santry, Ruth	23 Moulton Avenue, North Weymouth
Sattler, Mildred	Grandville Center
Sheehan, Mary	23 Ames Avenue, Canton
Sites, Katherine	535 North Montello Street, Brockton
Stanton, Frances	Emery Road, Marshfield
Staples, George	407 High Street, Somerset
Starkey, Mary	38 Brow Avenue, Braintree
Sullivan, Barbara	35 East Main Street, Merrimac
Thompson, Marion	940 Summer Street, Bridgewater
Tolivaia, Newton	38 Covington Street, Bridgewater
Tolpin, Jean	116 Copeland Street, West Quincy
Torrey, Jean	5 Torrey Street, Attleboro
Vogel, Patricia	103 South Street, Randolph
Waterman, Mary	243 North Central Street, East Bridgewater
Whiting, Evelyn	52 Oxford Avenue, Haverhill
Woodard, Sarah	136 West Street, Elmwood
Wordell, Doris	5254 North Main Street, Fall River
Zatuchny, Leonard	44 Hansborough Street, Dorchester
Zeidman, Dorothy	106 Maple Street, Roxbury

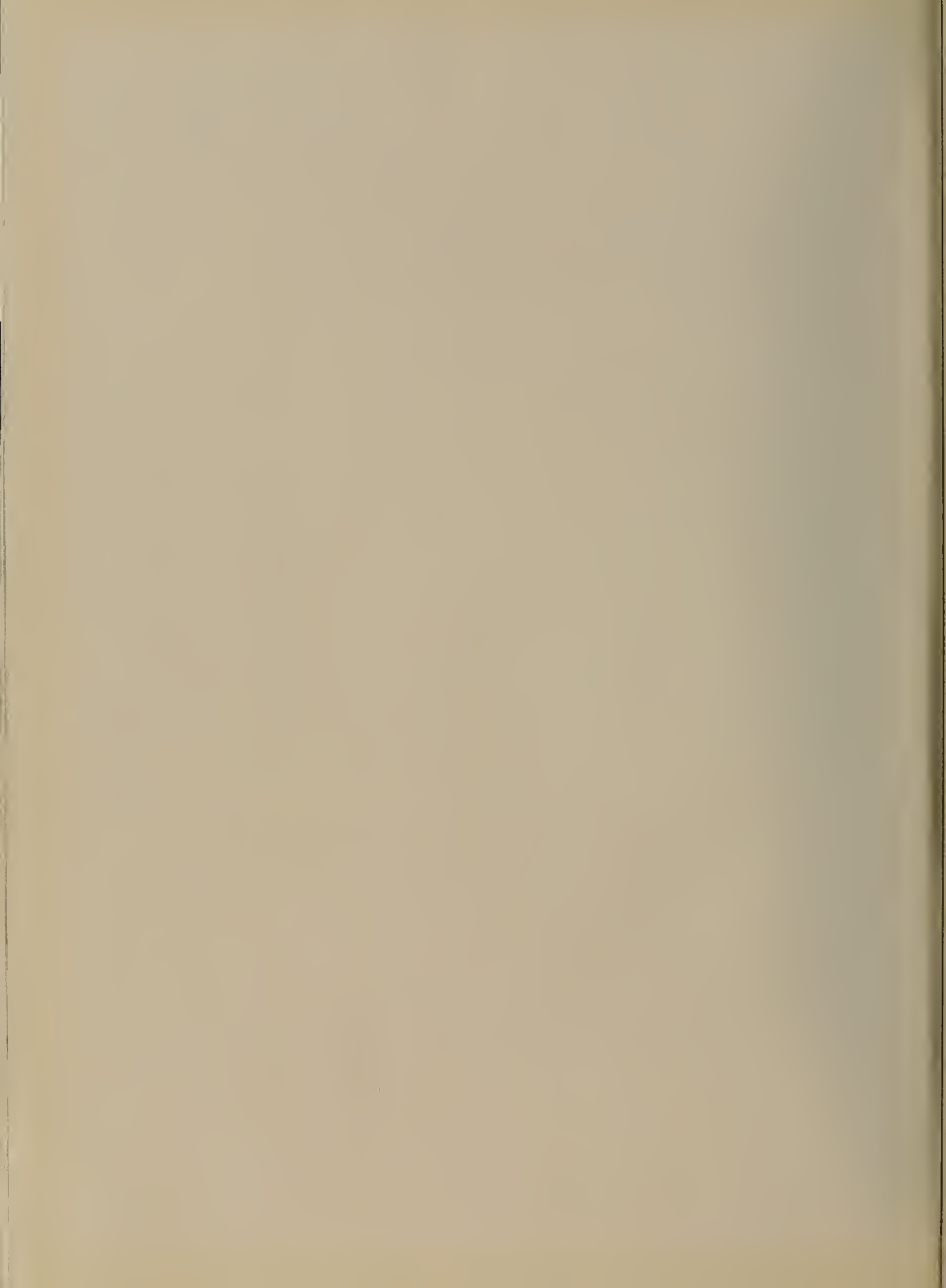
## These Too Shall Pass

A stranger watched in Michigan's sunset low,  
A wolf attack a herd of doe.  
Deep night, by Northern lights, and campfire spent  
These words he penned, cold fingers bent.

"Such preying wolves as yonder will  
Be here, while there are deer to kill."  
A hundred years have passed, another age,  
Since wet the ink upon that page.

Wolves long are gone from Michigan's brink  
Yet still the deer come down to drink.  
For he forgot, though fierce, wolves tread alone  
And loyal weak will yield to none.

Katherine Ann Tiernan, '42





---

COMPLIMENTS OF

# The Bridgewater Alumni Association



THE BOYDEN HOUSE

THE PROPOSED CENTENNIAL GIFT FROM  
THE ALUMNI TO THE COLLEGE, TO BE USED  
AFTER NECESSARY ALTERATIONS AND REPAIRS  
FOR EXPANSION OF LIBRARY FACILITIES.

---

---

COMPLIMENTS OF

# C. K. GROUSE COMPANY

NORTH ATTLEBORO

MASSACHUSETTS



MAKERS OF

BRIDGEWATER STATE TEACHERS COLLEGE RINGS

And Manufacturers of

CLUB AND FRATERNITY PINS

---

---

**THE FICKETT TEACHERS'  
AGENCY**

●  
8 Beacon Street  
Boston, Mass.

●  
Consult Us  
for  
Personal Effective  
SERVICE

●  
Established 1885

●  
E. W. FICKETT, Manager  
Member National Association  
of Teachers' Agencies

**ANNE'S KITCHEN**

Breakfasts - Luncheons - Dinners  
Home Cooking

Bread - Pies - Rolls - Doughnuts  
Fancy Pastry

---

**CHAPIN—LARKINS  
PRESS**

Telephone 660

Fine Printing - School Supplies  
20 Main St. Bridgewater.

---

**ELECTRIC HOT WATER**

is surprisingly economical, very likely costing less than you now pay, yet it is deluxe service — clean, safe and silent, and all you ever do is turn the faucet. Get the full story.

*Brockton Edison Co.*

---

*Patronize Our Advertisers*

---



---

COMPLIMENTS OF  
**SNOW'S FRIENDLY STORE**

---

**BRADY'S DINER**

**Wishes Good Luck and Success to the Graduating Class of 1941**

---

**REED TEACHERS AGENCY**

**120 Boylston Street — Boston**

Fred Reed, Owner

**Personal interest in candidates**

**Aggressive methods**

---

**To the Graduating Class**

**Congratulations and Best Wishes for a Successful Future**

**CENTRAL SQUARE PHARMACY**

The Rexall Store

**BRIDGEWATER, MASSACHUSETTS**

---

**THE FIELD COMPANY**

**290 Montello Street**

**Brockton, Mass.**

Simpson Spring Beverages  
Confectionery at Wholesale

---

**EASTERN GRAIN  
COMPANY**

Bridgewater                      Massachusetts  
Distributors of Wirthmore Feeds  
Use Wirthmore Feeds for Best Results

WIRTHMORE  
Poultry  
Feeds

WIRTHMORE  
Dairy and Stock  
Feeds

**DAIKER NURSERIES  
FLOWER SHOP**

Corsages — Hair Ornaments  
Cut flowers of all kinds  
We wire flowers anytime, anywhere

977 Summer St.                      Bridgewater  
Tel. 937

**Members of  
Florist Telegraph Delivery  
Association**

---

---

# **The Grace M. Abbott Teachers' Agency**

Grace M. Abbott, Manager

•

120 Boylston Street

Boston

---

COMPLIMENTS OF

**A FRIEND**

---

**DORR'S PRINT SHOP**

**PRINTERS**

Printers of Campus Comment

---

COMPLIMENTS OF

**BART CASEY**

---

**CAPITOL**

THEATRE ——— BRIDGEWATER

MATINEES

Daily

at

2:00 P. M.

UP TO THE MINUTE

MOTION PICTURE ENTERTAINMENT

FOR THE ENTIRE FAMILY

SUNDAYS AND HOLIDAYS CONTINUOUS

EVENINGS

From

6:45—

11:00 P. M.

---

**BRIDGEWATER SAVINGS BANK**

BRIDGEWATER, MASSACHUSETTS

•

A Mutual Savings Bank

Incorporated 1872

---

---

# Advertisers Engraving Company

Incorporated



ARTISTS

ENGRAVERS



126 Dorrance Street

Providence, Rhode Island

Telephone Gaspee 7095

---



---

# **WAID STUDIO**

18 NEWBURY STREET  
BOSTON, MASSACHUSETTS

• • •

## **SCHOOL and COLLEGE PHOTOGRAPHERS**

Completely equipped to render the highest quality craftsmanship  
and an expedited service on both personal portraiture  
and photography for college annuals.

• • •

**PHOTOGRAPHERS TO THE CLASS OF 1941**

Patrons May Obtain Duplicates at Any Time

---



•

Congratulations to  
the editor and the staff  
of the 1941 Alpha

•

*Reynolds Printing*

NEW BEDFORD, MASSACHUSETTS

*Would also appreciate the pleasure of serving you*

---





