



Bridgewater State University

Virtual Commons - Bridgewater State University

Bridgewater State Yearbooks

Journals and Campus Publications

1938

Alpha [Yearbook] 1938

Bridgewater State Teachers College

Follow this and additional works at: <https://vc.bridgew.edu/yearbooks>



Part of the [Education Commons](#), and the [Social History Commons](#)

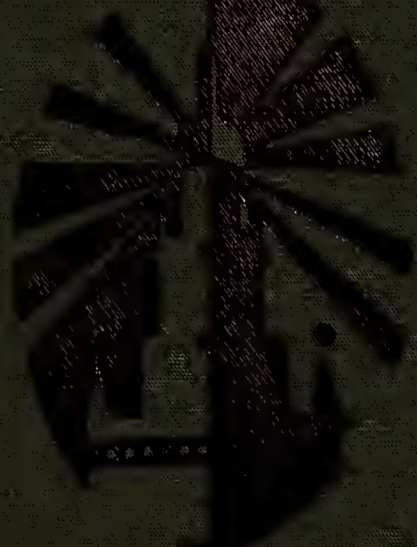
Recommended Citation

Bridgewater State Teachers College. (1938). *Alpha [Yearbook] 1938*.

Retrieved from: <https://vc.bridgew.edu/yearbooks/40>

This item is available as part of Virtual Commons, the open-access institutional repository of Bridgewater State University, Bridgewater, Massachusetts.

alpha



publication of the students of the
state teachers college bridgewater, massachusetts

Reference Copy
P. B. L. L. L.
L. L. L. L.

nineteen
thirty
eight
alpha

dedication

to our new president,

john joseph kelley

. . . amiable, just, and unselfish . . .
member of our faculty for twenty years
. . . dean of men for thirteen years
. . . whose every activity manifests
fair play, honor and sincerity . . .
whose humaneness is fast becoming a
living bridgewater tradition . . . we
respectfully dedicate this fortieth volume of *alpha*.

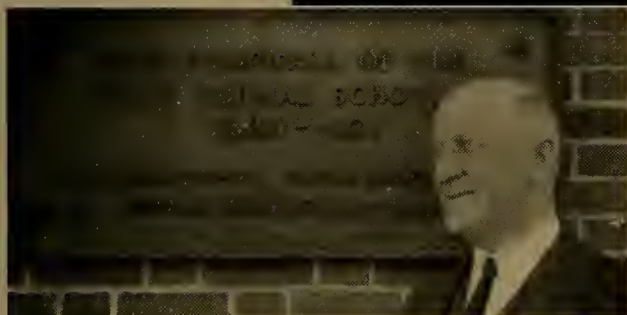
educator

philosopher

friend

builder

administrator



idealist

counselor

gentleman

guide

instructor

class ode

throughout the years, thy ivied walls
have kept us safe within the fold,
secure from all the winds of chance,
and sheltered from the bitter cold.

within these walls we looked to thee
for high ideals and counsels wise
just as thy tower light becomes
the "cynosure of neighboring eyes."

now when the parting moment comes
and paths appear to future bright,
thy faithful guidance will remain—
a hidden source of truth and light.

—kathleen graham



explanation of the book

. . . an experiment in suggestion . . . with modernism as the keynote . . .
. . . seniors' individual write-ups . . . an attempt to catch . . . the essential personality . . . without sentimentality . . . an impression . . . drawn from four years' contact . . . and set down for remembrance . . .

. . . reports of organizations . . . typical or significant of . . . the activities and interests of the organization . . . for this year . . .

. . . the cover . . . a modernized version of the college tower . . . designed by margaret carlson . . .

. . . the "classes" plate . . . portrayal of mr. kelly's printing class . . .
. . . designed by arthur applebaum . . .

. . . the "s. c. a." plate . . . depiction of the swearing into office of the student government president . . . designed by virginia viner . . .

. . . the "clubs" plate . . . representation of mr. kelly's class in woodwork designed by muriel logan . . .

. . . the "athletics" plate . . . illustration of student receiving his letter from the president . . . designed by ruth strange . . . ours the work . . . yours the verdict.

appreciation

. . . the editorial board of *alpha* . . . wishes to extend sincere appreciation . . . to all members of the college who have participated in the experience of publishing the 1938 *alpha* . . .

. . . to miss pope . . . for her valuable financial guidance . . .
. . . to miss nye . . . for her way of lifting our heads above the clouds . . .
. . . to miss davis . . . for her habit of keeping our feet well upon the ground.

editor-in-chief, polly t. hull

business manager, john mcgovern



undergraduate members of alpha board

assistant editor

literary editor

assistant art editor

assistant treasurer

assistant business manager

assistant advertising managers

assistant photography editor

virginia black

judith carlson

ruth strange

edmund senesac

walter harding

john metevier

robert blaney

verne olson

advertising manager, george johnston

art editor, margaret carlson

treasurer, john smith

photography editor, joseph chicetti

faculty



joseph i. arnold
social science



alice b. beal
supervisor of training



edith h. bradford
modern language



john l. davoren
education



lois l. decker
physical education



charles e. doner
penmanship



george h. durgin
mathematics



olive h. lovett
english



ruth i. low
english



iva v. lutz
methods

• 1938



mary i. caldwell
physical education



julia c. carter
library



ruth e. davis
english



e. irene graves
science



m. katherine hill
literature



paul v. huffington
geography



brenelle hunt
psychology



william a. mcgurren
science



frederick a. meier
physical education



priscilla m. nye
art

faculty



s. elizabeth pope
dean of women



frieda rand
music



gordon l. reynolds
art



cora m. vining
library



martha m. burnell
prin. of training school



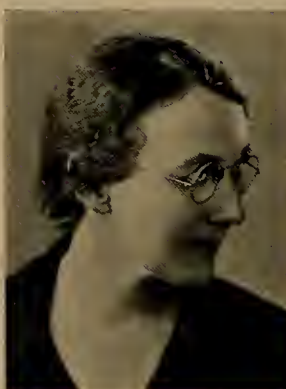
gladys l. allen
grade two



louise h. borchers
grade five



katherine packard
grade four



gertrude m. rogers
grade two



helen e. sleeper
grade four

• 1938



mary v. smith
history



louis c. stearns
science, garden



balfour s. tyndall
science



lucy b. braley
grade three



evelyn r. lindquist
grade six



neva i. lockwood
grade six



mary l. marks
kindergarten



grace e. smith
grade one



charlotte m. thompson
grade three



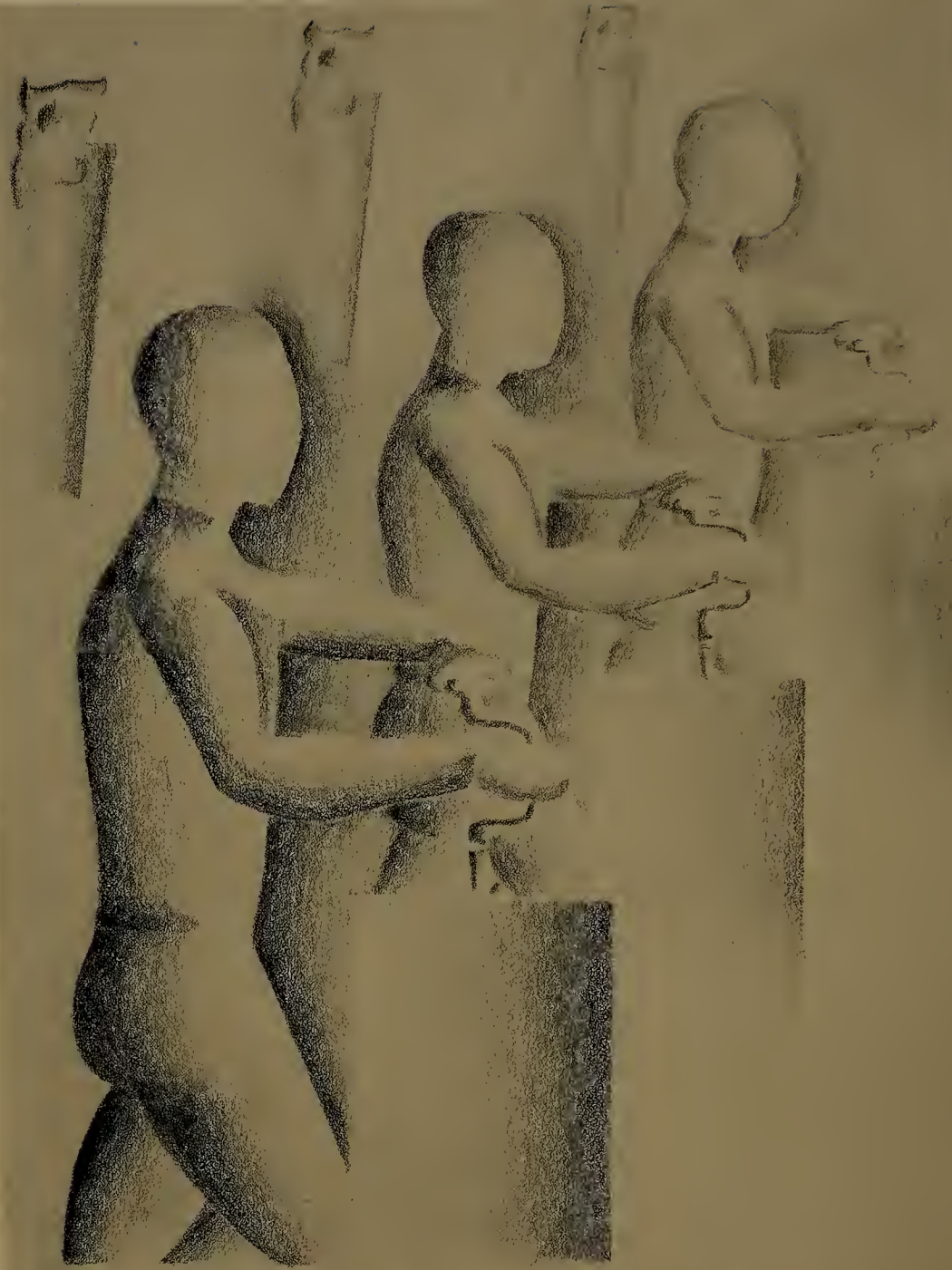
a. mabelle warner
grade five

foreword

. . . the pages of the 1938 *alpha* . . . an effort to portray both editorially and pictorially the student life of the college . . . the result of an urge common to all men to leave behind some fragment of personality . . . a hope to preserve for the future the memories of our under-graduate experience . . . so vivid now . . . so quickly dimmed . . . so easily crowded out . . .

. . . there is something about one's own . . . "deserving or not . . . that is always dear . . . thus it is with the past four years . . . sharing the same joys and unhappinesses . . . the fellowship of sports . . . the friendship of instructors . . . the congeniality of classes . . . we have come to hold them dear . . .

. . . this yearbook, too, is our own . . . into it we have set that which is worth remembering . . . but the mere act of recording characterizes it as an ending . . . of a four-year dash toward the festival of life . . . which we may not enter . . . until the salt and savor of the character, the taste, and the wit of each of us come into their own . . . when we can live with people and yet love them . . . fight with them and for them . . . share our experiences with them and build our philosophies independently . . . break down barriers and move on into usefulness . . .



classes classes classes



senior class notes

president

george johnston

vice-president

florence kuchmeister

treasurer

edward koskela

secretary

june sherman

. . . the last year . . . and the best . . . having our ups . . . and our
downs . . . our agreeings . . . and our differences . . . but stronger . . .
and more tolerant . . . for the experience . . . breaking down barriers . . .
and building up friendships . . . learning to work more for the class . . .
and the college . . . and less for the individual . . .

. . . the senior social . . . the wholesome cutups of the country . . .
square dances . . . and john paul jones . . . pigtails and overalls . . .
rubes and their countrified gal-friends . . . mutual loss of inhibitions . . .
by faculty and students . . .



. . . truly impressive . . . during mr. kelly's inauguration . . . truly professional . . . during practice teaching . . . truly original . . . in their class day presentation . . .

. . . into boston for the biennial . . . teaing the todd lecturers . . . together again . . . for the senior tea . . . its initiation . . . voted a splendid idea . . .

. . . romping at the class outing . . . but pomp and circumstance . . . for baccalaureate sunday . . .

. . . formality . . . favors and a big-name orchestra and prom gowns . . . nostalgia . . . faculty reception and senior serenade . . .

. . . individualistic . . . but cooperative . . . youthful . . . but maturing . . . idealistic . . . but with common sense . . . sometimes misunderstood . . . but understanding . . . hail and farewell . . . to the seniors.

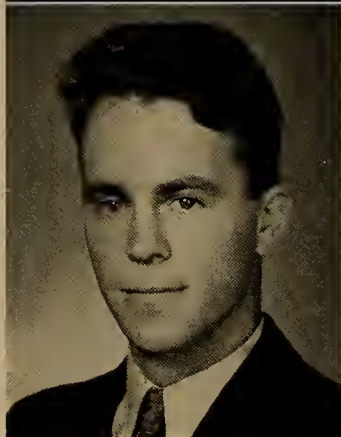


beatrice irene barton

12 eustis street

wollaston, massachusetts

. . . stealing a march on us all . . .
proving a woman can keep a secret
. . . a merry twinkle . . . true under-
standing of child nature . . . slow, sub-
tle humor.



ernest bazinet

15 schofield street

dudley, massachusetts

*circulation manager of campus comment,
assistant treasurer of s. c. a., treasurer
of s. c. a.*

. . . glutton for work . . . cheery and
likable . . . poring over s. c. a.'s bank-
books and statements . . . no co-ed
ever getting to first base with this little
man . . . intellectual tastes . . . running
to opera and concerts.

dorothy franklin bell

173 spring street

brockton, massachusetts

*kindergarten-primary club, girl scouts,
hobby club*

. . . everybody's friend . . . so much
in love . . . clowning for the class . . .
spontaneity matched with thoughtfulness
. . . impulsive generosity . . . whole-
some.

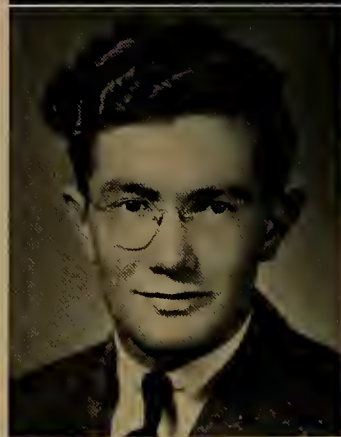
milton biller

3 summer street

quincy, massachusetts

*treasurer of men's club, glee club, class
representative*

. . . 10.2 for the hundred . . . nothing
flat for any piano ditty . . . still clinging
to a gay nineties bow tie . . . an unsus-
pected whizz in classes.



eleanor frances blake

34 linden street

fall river, massachusetts

campus comment

. . . mild in manner and disposition
. . . fine-textured skin and auburn hair
. . . flair for sociology and knitted
clothes . . . patient . . . unassuming
. . . soft voiced.



alice blanchfield

13 holyoke street

easthampton, massachusetts

*president of dormitory council, vice-pres-
ident of dramatic club, social activities
committee*

. . . two alices . . . one flighty . . .
wisecracking . . . good-natured . . . tak-
ing life with a laugh . . . the other, ser-
ious . . . capable . . . balanced . . .
being understanding as dorm council
head . . . interested in a c. o. g. (certain
old grad) . . . blond, refreshing resil-
ience.



magda borgatti

75 high street

bridgewater, massachusetts

*french club, student co-operative asso-
ciation, president of day student organ-
ization*

. . . dark bewitchment . . . efficiently
leading the day students . . . flick of
alluring glance . . . charm of under-
standing smile . . . french club's love-
liest mademoiselle . . . a vital crispness.



benjamin james bump

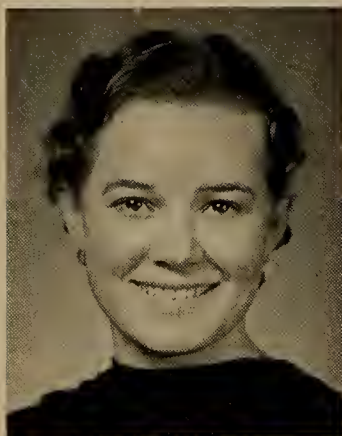
26 courtland street

middleboro, massachusetts

*dramatic club, b. t. c. a. a. council, stud-
ent government*

. . . character actor par excellence . . .
determined crusader for any given cause
. . . ready and willing with a quick
comeback . . . first man to head dra-
matic club.





emma elizabeth cadwell

42 summer street
kingston, massachusetts

hobby club, topics of the day club, day student council

. . . no suffering from spectatoritis here
. . . active participation in all sports
. . . an especially proficient hockey goalie . . . a stocky frame which breathes perseverance . . . capable . . . steadfast . . . kindly.



eleanor cavanaugh campbell

42 church street
bridgewater, massachusetts

campus comment, dancing, glee club

. . . vital, flexible design for living . . .
quick friendliness . . . unfailing sports-
manship . . . almost always gay . . .
enlivening life with a dance step . . .
unselfconscious . . . personable.

margaret carlson

105 plympton street
middleboro, massachusetts

*campus comment, art-editor of alpha, cul-
ture fund*

. . . doll-like, fragile fairness . . .
making the college culture-conscious and
civic-conscious . . . supervising alpha's
art work . . . beautiful old english let-
tering in green ink . . . acme of delicate
precision . . .



muriel carr

247 summer street
west somerville, massachusetts

. . . valuable newcomer to the class of
'38 . . . vigorous initiative . . . sub-
stantial judgments . . . alert interest
. . . all offset by an infectious sense of
humor.



rita carroll

65 norton avenue
taunton, massachusetts

. . . quiet . . . yet with a spirit that matches her crowning glory . . . studious and dependable . . . dramatics, story-telling, handicrafts among her talents . . . stability and conscientiousness.



alice virginia chadwick

51 francis avenue
west bridgewater, massachusetts

campus comment, vice-president of w. a. a., director of basketball

. . . a well-rounded personality . . . hard to know . . . varying moods . . . from gaiety to calm . . . boyishly agile . . . magnetic . . . able to arouse enthusiasm.



joseph anthony chicetti

framingham, massachusetts

president of camera club, photo editor of alpha, men's club

. . . the mighty atom . . . marshaling his amazing energies . . . truckin' in the gym . . . photography enthusiast . . . what the well-dressed collegiate will wear . . . adept at handicrafts.



marjorie edith cleary

108 phillips street
wollaston, massachusetts

w. a. a. representative, field hockey, glee club

. . . baby face — breaking up into one surprisingly wide smile, two misplaced (or well-placed?) dimples, and two mirthful eyes . . . adding up to 100% blond companionship . . . good dancer, good sport, and good looking.





barbara ruth cleaves

185 bridge street
north weymouth, massachusetts

orchestra, modern dancing, field hockey

. . . often the victim of mistaken identity — very mistaken, 'cause they really are not look-alikes . . . noon-time gym enthusiast . . . clever with her hands and modern in her tastes . . . an easy, friendly manner . . . interesting union of blonde hair and brown eyes . . . chatty.



elizabeth anthony clegg

fall river avenue
seekonk, massachusetts

garden club, library club

. . . an inflexible will . . . agreeable combination of dark brows, snapping eyes, and pleasant smile . . . an extensive social life not guessed at by many . . . swift skill on ice . . . firm in her opinions and quick to defend them.

mary alice connell

44 iron hill
east weymouth, massachusetts

camera club, library club, president of newman club

. . . personification of nervous vitality and dash . . . enthusiastically doubling newman club's membership . . . a friendly slap on the back . . . no mere giggle this . . . enjoying outdoor and indoor sports . . . the leap without the look.

margaret costello

10 hanna street
quincy, massachusetts

german club

. . . an infectious gaiety . . . a genuine and real person . . . supreme good nature . . . handling her various responsibilities in the well-known responsible way . . . hale and hearty.



genevieve courant

56 washington street
gloucester, massachusetts

*vice-president of french club, library club,
garden club*

. . . busy, black-eyed bustler of third floor . . . ever-ready to tell a joke or bear up under yours . . . to do her work, then help you struggle through . . . to come sputtering through a teasing — but smiling! . . . an easy-going, generous nature.

ethel cowgill

onset, massachusetts

director of baseball, volley ball, and field hockey

. . . two ethels . . . one gay and careless . . . enjoying life . . . full of enthusiasm . . . for w. a. a. sport projects . . . one serious . . . a little cynical . . . questioning life . . . with a keen appreciation of the lovely and the poetic . . . jaunty.

eileen katherine creney

426 summer street
brockton, massachusetts

president of topics of the day club, french club, little dance group

. . . a questioning, naive manner . . . dabbling in french, pottery, literature, design . . . versatile and humorous . . . competent scholastically . . . energetic socially . . . sincere.

geraldine claire crowell

26 hartsuff street
rockland, massachusetts

hobby club, topics of the day club

. . . topics of the day club and swing club of equal interest to gerry . . . often expressing delightfully original opinions . . . glossy brown hair . . . refreshingly natural.





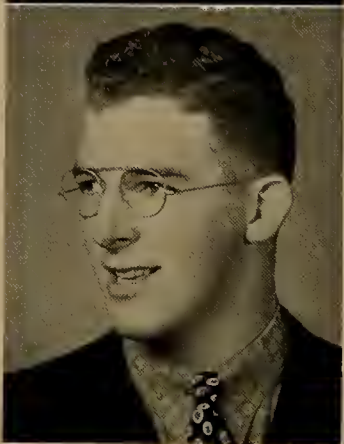
dorothy rae cushman

37 hale street

bridgewater, massachusetts

assistant treasurer of day students, glee club, dramatic club

. . . collegiate co-ed . . . launcelot on the stage . . . green flash in basketball . . . member of the orchestra . . . dot and ted: backbone of the socials . . . enthusiastic . . . eyes crinkling in a smile . . . active . . . enterprising.



milo emerson cushman, junior

wyben road

westfield, massachusetts

captain of basketball, soccer, baseball

. . . is it true what they say about milo?
. . . prize goon hanger . . . a living statue in shorts . . . saw red for years . . . who will break his hot-dog record?
— 19 . . . "the perfect defensive guard".

margaret deane

462 summer street

bridgewater, massachusetts

kindergarten-primary club, garden club, basketball

. . . deliberate and drawling . . . soft, agreeable southern atmosphere . . . disturbed by true yankee ambition and vigor . . . pumping a bike or striding along . . . sympathetic . . . amicable.

doris roberta dennison

43 quincy avenue

quincy, massachusetts

president of hobby club, scholarship committee, campus comment

. . . exact and artistic tastes manifesting an exact and artistic mind . . . skilful fingers . . . missing "bea" . . . quietness, frequently interrupted by her own wit or an appreciative laugh over yours . . . just a little shy.



mary rita donahoe
217 commercial street
weymouth, massachusetts

*president of glee club, choir, campus
comment*

. . . what goes on beneath that cool, detached surface? . . . ridiculously impressionistic jingles . . . poised leader of chapel sings . . . unperturbed . . . originality in the arts . . . leisurely.



rita donovan
19 beads street
north weymouth, massachusetts
newman club, golf

. . . impeccable grooming . . . lorelei endlessly combing black locks . . . the results well worth the effort . . . an unsuspected domestic knack for the culinary art . . . a suspected social knack for the terpsichorean art . . . unhurried . . . positive.



shirley dutton
10 alvin road
plymouth, massachusetts

*vice-president of s. c. a., treasurer of
junior class, dormitory council*

. . . cavorting, capering cutter-upper . . . the temple infant playing dr. jekyll and mr. hyde . . . conscientiousness and capability . . . doing a swift change to a charming irresponsibility . . . serving up a witty retort with each package of notebook paper.

richard dwyer
basket street
huntington, massachusetts

*president of men's glee club, campus
comment, a cappella*

. . . oil on the troubled waters of miss rand's wrath . . . an authentic maiden aunt in a thespian venture . . . house papa at tilly for three years . . . a veritable "jack dalton" with the mail.





kathryn flaherty

115 woodlawn street

lynn, massachusetts

*president of kindergarten-primary club,
campus comment, men's club play*

. . . gazing with a baby stare . . . an
ultra smooth little dancer . . . unaware
and naïve . . . or an act? . . . anyway,
acting superlatively in "the first year"
. . . this ingeniously ingenuous president
of k. p. . . of all things!



sylvia fleish

gammons road

acushnet, massachusetts

science club, day student council

. . . possessed by a consuming passion
for all things scientific . . . a most faith-
ful follower in the legion of "microbe
hunters" . . . to be depended upon al-
ways to do the conscientious thing . . .
an idealistic and scrupulously honest per-
sonality . . . flooded with warmth.

grace ellen foley

35 plain street

randolph, massachusetts

dramatic club

. . . cool, calm, and collected . . .
applying her efforts to many fields . . .
notably dramatic club . . . knowing what
she wants . . . and making sure she
gets it.



marilyn ellen francis

38 county road

chelsea, massachusetts

*class representative, treasurer of library
club, w. a. a. board*

. . . feminine morganthau, keeping wood
out of the red — her favorite color . . .
sport enthusiast . . . cheerful pilot of
a bulging buggy piled high with fair
co-eds . . . uncompromising . . .
cheery.



mabel jeanne gallery

682 second street
fall river, massachusetts

hockey, tennis, volleyball

. . . charitably humane . . . using "it happened one night" technique . . . self-contained in the face of difficulties . . . giving clear-cut interpretations in history classes . . . direct.



claire avis gardner

37 beebe road
bridgewater, massachusetts

orchestra, german club, treasurer of junior class

. . . poised always . . . dignified sometimes . . . comical often . . . charming executive of n. y. a. workers . . . prettiest and most emphatic when vexed . . . musical . . . well-groomed.



wilder ayling gaudette

high street
rockland, massachusetts

lecture fund, topics of the day

. . . intimate of blanche yurka . . . northeastern's loss, our gain . . . dapper little man . . . earnest . . . friendly . . . possessed of a serious purpose and intent.



mary anntoinette gauszis

46 upland road
brockton, massachusetts

secretary of french club, glee club, topics of the day club

. . . a many-sided personality . . . agreeable and argumentative . . . serious and clowning . . . practical and dreaming . . . possessed of a fine alto voice . . . artistic.





mildred roberta goldstein

889 robeson street
fall river, massachusetts

*dramatic club, treasurer of hobby club,
campus comment*

. . . a happy disposition broadcasting
an infectious giggle . . . condemned
by height to play the children's roles in
school productions . . . capable . . .
a shining light in history classes.



kathleen lydia graham

highland street
south middleboro, massachusetts

*president of german club, glee club, day
student council*

. . . an answer for every baffling ques-
tion . . . economic, political, or social
. . . a brilliant mind . . . sincere . . .
unusual personality . . . a keen under-
standing of people.

elizabeth gurney

349 cottage street
new bedford, massachusetts

orchestra, glee club

. . . versatile . . . from music to cal-
culus . . . famous for between-class
naps . . . but never any in-class dozes
. . . soothing, solicitous manner . . .
gift for the dramatic . . . a full, modu-
lated voice.

lawrence john hanlon

211 copeland street
quincy, massachusetts

*president of freshman class, dramatic
club, glee club*

. . . handsome president of those un-
mentionables . . . fully as popular as
he is bashful . . . yet the man about
town . . . having heavy majors in senior
english and sophomore brunette.



eleanor frances harlow

marshfield, massachusetts

garden club, science club, dormitory council

. . . biologist . . . botanist . . . zoologist . . . science her focus . . . pleasantness her forte . . . cooperative resident of tillinghast . . . the most conscientious of workers.



anna rosaline hepperle

129 hollis avenue

braintree, massachusetts

german club, girl scouts

. . . modest possessor of an unusual musical gift . . . humorous . . . enthusiastic over the complexities of economics and sociology . . . thorough in all her undertakings . . . firmly sensible.



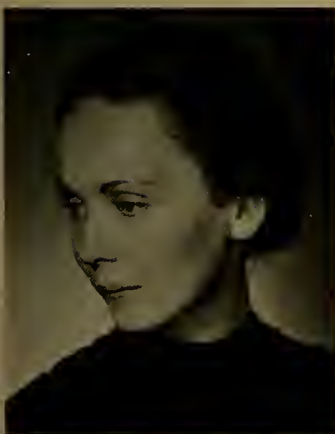
pauline torrey hull

8 abbott road

gloucester, massachusetts

editor of alpha, secretary of library club, lecture fund

. . . meaningful simplicity of a modern design . . . executed with finesse . . . subtlety of humor reserved for intimates . . . a smock into a schiaparelli . . . paradox of the eternal feminine . . . smooth as ice . . . and as cool . . . individual in mind and expression.



francis jagello

4 dawes street

dorchester, massachusetts

topics of the day club, science club

. . . he of the martian physique and radical philosophies . . . his dancing ability producing a pun on his name . . . city slicker number one . . . often more definite than accurate in his arguments . . . taking genuine pleasure in loafing about.



barbara jenkins

chartley, massachusetts

. . . gift from hyannis . . . seeing the funny side of everything . . . but sharing her sense of humor only with intimates . . . schoolma'am's pug . . . quickly moved to sympathy . . . depth beneath that calm.

george francis johnston

307 east squantum street

atlantic, massachusetts

class president of sophomore, junior, senior class, advertising manager of alpha, orchestra

. . . that good-natured man-about-campus . . . one half of a duumvirate smacking of dictatorship . . . superlatively successful class president . . . a quizzically cocked eyebrow and a bass voice . . . constituting a distinct appeal to co-eds . . . slip-horn artist.

kathleen buddington kelly

bridgewater, massachusetts

president of tillinghast dormitory, chairman of lecture fund, modern dance group

. . . thrice blest . . . with creative hands, a keen mind, and a warm heart . . . too aloof for her best interests — and ours . . . the reserve of assurity . . . thoughtful humor sometimes descending to riotous fun . . . cordial . . . wise.

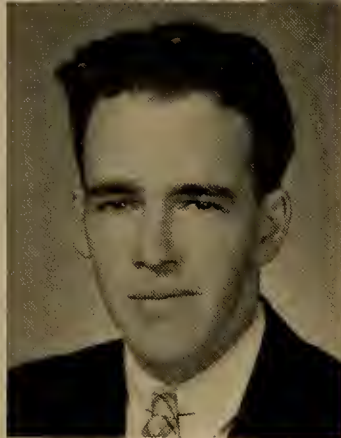
moira estelle kispert

69 herman street

fall river, massachusetts

student cooperative association, library club, french club

. . . mona lisa by a dutch master . . . fickle and constant . . . placid and vivacious . . . casual and enthusiastic . . . huffy's acknowledged successor as weather forecaster . . . a suppressed vitality bubbling up at odd moments.



sylvia knuttunen

63 buckley street
quincy, massachusetts

student director of orchestra, treasurer of w. a. a., college trio

. . . laughing girl . . . miss rand's more than capable assistant . . . loving music . . . student director of orchestra . . . 'cello soloist . . . neat basket shooter . . . a happy combination of light-heartedness and true ability.



edward werner koskella

sagamore, massachusetts

glee club, captain of baseball, treasurer of senior class

. . . the blocky blond . . . with fine features and a genial grin . . . pillar of support to bridgewater-brockton run of the eastern mass . . . catcher with a batting average plus . . . one of our more consistent romeos.



florence louise kuchmeister

15 willow avenue
winthrop, massachusetts

vice-president of freshman and senior classes, president of library club, lecture fund

. . . combination of the incongruous . . . platinum blond effect with ladylike dignity and graciousness . . . the boyishly abrupt with the charmingly feminine . . . the impulsive with the thoughtful . . . the youthfully idealistic with adult practicality.



violet jenny kundiz

18 wilmington street
brockton, massachusetts

glee club, modern dancing, financial secretary of w. a. a.

. . . an hysterical giggle . . . a mop of rebellious curls . . . holding her own nicely, thank you . . . in decoration committees . . . singing groups . . . or finance boards . . . arty . . . musical.





ardelle meredith leonard

41 court street

brockton, massachusetts

french club, topics of the day club, day student council

. . . gently honest . . . as lacking in
pretense as a puppy's tail wag . . . soft
as silk . . . artistic designer of mardi
gras' modern robes . . . blushing . . .
so red the rose . . . straightforward.



josephine mae lindsay

1348 main street

south weymouth, massachusetts

french club, hobby club

. . . hilarious hoyden . . . amusing in
her bluntness and amazing in her pep
. . . truly professional when she chooses
. . . a whiz at scrambling through piles
of work . . . tiring the observer with
her exhibition of energy.

dorothy lipman

138 myrtle street

new bedford, massachusetts

. . . breezy loquacity . . . sophisticated
swinger to any tune . . . more than hold-
ing her own in argumentation . . . defin-
ite in her viewpoints . . . steadfast in
her convictions.



helena hope logan

540 columbian street

south weymouth, massachusetts

hobby club

. . . sunny and impulsive . . . deft-
fingered in art and handicrafts . . . an
enviable complexion . . . vigorous . . .
holding her giggle in reserve for an op-
portune moment.



jeannette martin

1 warren avenue
plymouth, massachusetts

w. a. a. governing board, archery

. . . amazonian dipper in wintry waters
. . . appearing as regularly as monday
with original and different hair-do's . . .
but never changing her heart interest
. . . talkative . . . surprisingly con-
scientious . . . athletic . . . well-built.



mary ellyn masterson

145 shores street
taunton, massachusetts

. . . two distinctive talents — one for
things "arty" . . . the other for preserv-
ing a quietness of manner . . . a sweet
smile flooding her face with light . . .
a beneath-the-surface type of charm.



daniel justin mccarthy

18 hamilton street
brockton, massachusetts

*orchestra, secretary of s. c. a., dramatic
club*

. . . the dark man with the "bump" on
his elbow . . . swinging a wild ride on
his licorice stick . . . a la goodman . . .
and singing a good tenor, too . . .
great lover behind the footlights.



eileen mcdonough

28 north avenue
norwood, massachusetts

*editorial editor of campus comment, class
representative, library club*

. . . a light heart and a carefree smile
. . . observes st. pat's practically every
day . . . absent-minded . . . like the
best of us . . . an all-enduring class rep
for two consecutive years . . . the
pleasantness of extreme good-nature . . .
tolerant.





margaret mcgloin

592 washington street
braintree, massachusetts

president of w. a. a., glee club, newman club

. . . consistently fine worker . . . active . . . assured . . . shouldering easily the many-dutied office of girls' athletic leader . . . unassuming over her successes . . . small stature never limiting her athletic prowess . . . agile.



john francis mcgovern

13 charles street
north abington, massachusetts

business manager of alpha, basketball manager, glee club

. . . teddy bear with a good-natured grin . . . clowning his way to success . . . handling the business of basketball and alpha . . . with equal skill . . . singing and playing a piano with the best . . . but refusing to dance.

mary metcalf

450 plymouth street
bridgewater, massachusetts

class representative, basketball

. . . as ruggedly independent as our new england coastline . . . knowing her swing from "ickies" to "snakes" . . . lunching with calloway . . . eloquent in upholding her strong convictions . . . cooperative . . . affable.

dorothy moynan

13 everett street
taunton, massachusetts

topics of the day club, hobby club

. . . a ready humor lurking just beneath a calm exterior . . . really enormous eyes . . . sometimes questioning, sometimes sparkling . . . capable fingers fashioning artistic bits to delight the eye . . . the inseparables.



marjorie frances moore

99 mt. prospect street
bridgewater, massachusetts

campus comment, garden club

. . . still reserve . . . but only a rest
between witty observations . . . pink-
cheeked bashfulness . . . little girl ging-
hams . . . a budding personality.



phyllis evelyn morgan

896 allen street
springfield, massachusetts

*vice-president of library club, dormitory
council, w. a. a. representative*

. . . moods as changeable as — "if you
don't enjoy phyllis now, wait five min-
utes" . . . skilful hands . . . content
with the old lease on love . . . clever
decorator . . . frank critic . . . em-
phatic debater . . . gay companion.



rita mae murphy

36 lincoln street
north weymouth, massachusetts

*president of woodward dormitory, glee
club, treasurer of french club*

. . . chief babe-in-wood . . . between
the devil . . . but a diplomat . . . thus
preserving peace and quiet in our happy
home . . . joking, dark-haired colleen
. . . amiable but earnest . . . ask for a
sample of priceless imitation of campus
characters.

malcolm franklin nash

81 chapel street
abington, massachusetts

basketball, baseball, soccer

. . . still mourning the passing of one
salmon-colored suit . . . an unconscious
air . . . actually quite the scholar . . .
collecting letters . . . breaking hearts
in albany . . . wondering "who that
woman was".





dorothea wilma newsome

40 hancock street
boston, massachusetts

treasurer of tillinghast, science club, german club

. . . miss pope's right hand lady . . .
accomplishing her numerous duties . . .
with a minimum of trouble and annoyance . . . eager and able to help . . .
the perfect secretary . . . diminutive and dainty . . . soft-voiced and affectionate . . .
. . . no outward sign of a scientific bent.



william joseph nolan

60 sagamore street
dorchester, massachusetts

president of men's club, associate editor of campus comment, a. a. council

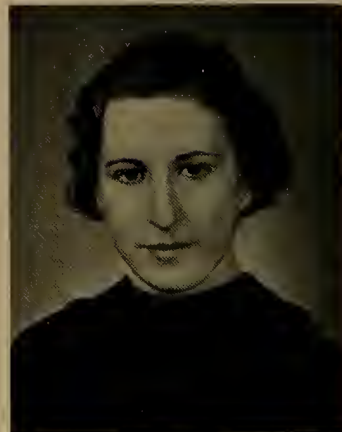
. . . dapper little man . . . with strong features and a husky frame . . . master of the well-turned phrase . . . managing the store . . . hobnobbing with the "prexies" . . . enthusiastic . . . cordial . . . forceful . . . carrying his thoughts through to completion.

alma nye

23 pearl street
middleboro, massachusetts

glee club, choir

. . . modest possessor of a sweet soprano . . . to be depended upon to have all work well-done . . . eager to make friends with everyone . . . conservative . . . unobtrusively social.



anna irma o'brien

312 franklin street
quincy, massachusetts

campus comment, class representative, student council

. . . concentrating on how to make chapel attendance a joy and not a duty . . . unobtrusive yet cordial . . . quietly efficient . . . successful in solving everyday problems.

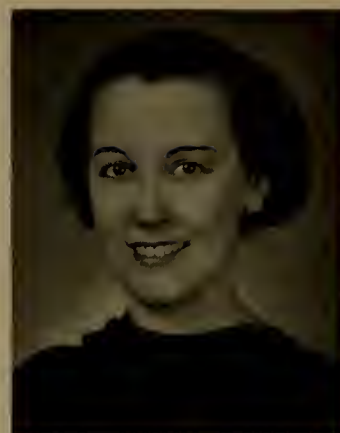


alice oram

45 kenneth street
west roxbury, massachusetts

kindergarten-primary club, library club

. . . charming manners and a cool air
. . . sophistication relieved by occasional animation . . . odd bits of amusing conversation . . . allure.



jeannette aldora paul

77 perry avenue
whitman, massachusetts

french club, hobby club

. . . impersonating the cat in "il elait une bergere" . . . a quiet, retreating personality . . . time for many hobbies . . . including patch-work quilts . . . and an accordeon . . . an unsuspected sense of humor.



dorothy rose perkins

8 alexander street
dorchester, massachusetts

president of s. c. a., vice-president of sophomore and junior classes, alpha art editor

. . . pagliacci to hamlet in one day . . . stateliness and speeches . . . attractive, arty aristocrat of the campus . . . perky, but poised . . . a trim, well-tailored air.



amy frances perry

212 hawthorn street
new bedford, massachusetts

treasurer of dormitory council, library club, pro-tem treasurer of senior class

. . . small, silky, and surprising . . . a budding sense of her own individuality . . . seriously inhibited by an over-developed bump of decorum . . . constantly in a dither . . . over such world problems as how to balance dorm council's books . . . or how to learn all dr. maxwell's notes . . . but without these, what would our aim be?





barbara steere polsey

170 union street
attleboro, massachusetts

*secretary of dormitory council, campus
comment, camera club*

. . . blonde, smiling attractiveness . . .
bringing flavor and style to campus com-
ments feature articles . . . quick, lively
action . . . exquisite, cameo-like profile
. . . winning . . . genuine.



margery elizabeth powell

54 fuller street
middleboro, massachusetts

*german club, w. a. a. representative, day
student council*

. . . as refreshing as an ocean breeze
on a day in june . . . absolutely nat-
ural and without pretenses . . . a sense
of humor that carries no sting . . . awak-
ening echoes of spontaneous laughter
. . . staunch and friendly . . . she car-
ries her fortune with her.

lucille radlo

18 schuyler street
roxbury, massachusetts

german club

. . . an absorbent mind . . . with ability
to express itself individually and defin-
itely . . . an answer to every social
question . . . darkly attractive . . . vivid
in personality . . . experienced librar-
ian . . . really knowing books she cir-
culates.

jack rapaport

18 crowell street
dorchester, massachusetts

german club, topics of the day club

. . . a loosely knit frame and a genial
grin . . . famed lecturer on rats . . .
argumentative . . . the second of the
city slickers . . . and the star gasoline
salesman.



martha frances reynolds

51 holmes street
north quincy, massachusetts

*vice-president of french club, campus
comment, topics of the day club*

. . . a conscientious spirit plus a well-known worried look . . . one of french club's most hard-working mam'zelles . . . a persistent desire to know all the answers . . . she'll get along.



ada joan roberti

tupper avenue
sandwich, massachusetts

corresponding secretary of w. a. a., director of soccer, basketball

. . . the best of intentions . . . a heart of purest 14-carat gold . . . occasional spurt of latin fire . . . a whiz on the athletic field . . . easy embarrassment often mistaken for indifference . . . eagerness to be of service . . . companionable temperament.



marie rudd

36 holyoke street
boston, massachusetts

recording secretary of w. a. a., basketball, badminton

. . . well-built lines of the typical athlete . . . well-dressed air of the typical modern . . . thoughtful comment . . . quick to grasp learning . . . not to be budged in her individual opinions by others . . . social.



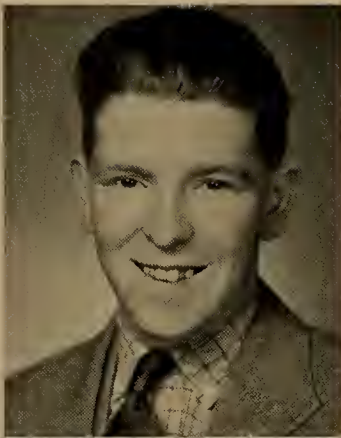
marjory floyd russell

30 keith place
east bridgewater, massachusetts

kindergarten-primary club

. . . nimble pixie . . . a witty remark to brighten up a dull moment . . . short on height . . . but long on friendliness . . . a gleam in her eyes . . . making resolutions . . . and keeping them.





albert thomas ryan

56 park street
rockland, massachusetts

assistant manager of baseball, manager of baseball

. . . laughing his way out of anything
. . . going to a class . . . polishing
the apple in training school . . . red hair
proclaiming good nature only . . . making
leisure use of worthy time.



bronia bertha rymut

furnace street
halifax, massachusetts

kindergarten-primary club

. . . plucky little commuter . . . with
the patience of a saint . . . and the per-
sistence of a scientist . . . her glow
hidden beneath a bashful and retiring
exterior.

helen sandlovitz

15 grafton street
quincy, massachusetts

hobby club

. . . achieving the impossibility of en-
joying life while accomplishing things
. . . dark vivacity . . . tickling your
sense of humor . . . happy-go-lucky and
laughing.



angela santospirito

73 franklin street
quincy, massachusetts

. . . though not with us for the entire four
years, a much appreciated addition to
the class . . . calmness of manner
coupled with good nature . . . obliging
friendliness.



lillian valencourt shaw

930 kempton street
new bedford, massachusetts

*vice-president of woodward dormitory,
library club, glee club*

. . . wood's fire chief . . . no change
in her program either . . . always effe-
vescent and bubbling . . . fastidious-
ness of dress accentuating a trimness of
figure . . . a fine alto . . . pert.



olga julia skerston

303 summer street
bridgewater, massachusetts

*editor of campus comment, topics of the
day, class representative*

. . . placidity as well as wit and toler-
ance . . . painstakingly careful . . .
many-dutied executive of our newspaper
. . . clear-cut opinions . . . thoughtful,
deliberate speech . . . earnest . . . cor-
dial.



dorothy ellsworth sherman

turnpike street
eastondale, massachusetts

. . . "purl two, knit one" . . . keeping
everyone in stitches . . . settling down
for an amusing chat . . . gathering her
considerable energies to go plowing
through work . . . solid judgment.



june sherman

state farm, massachusetts

secretary of the senior class

. . . june . . . reminiscent of flowers
and sunlight . . . dually gifted . . .
with a musical talent . . . with a quiet
charm . . . sweetly practical recorder
of senior class meetings.



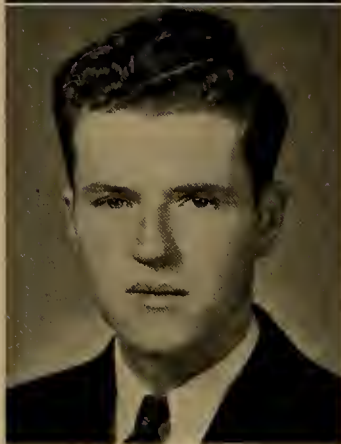


edward vincent skahill

5 everett street
wellesley, massachusetts

glee club, captain of soccer, dramatic club

. . . the wellesley warbler with the harvard haircut . . . majoring in extra-curriculars . . . still up in studies . . . squelching you and me but not miss rand . . . dancing like a "little dark man" . . . an all-time all-bridgewater fullback.



john gregory smith

83 nelson street
dorchester, massachusetts

secretary of camera club, treasurer of alpha, glee club

. . . big and bewildered . . . number three of durgin's city slicker triumvirate . . . he of the good bass voice . . . and the poor tenor ford . . . straining the faculty's sense of humor with his questions . . . fun to clown with . . . but taking a serious interest in alpha's bank-books.

margaret smith

buzzards bay, massachusetts

garden club, library club

. . . new york veneer . . . but just a country girl at heart . . . a non-believer in any unnecessary exertion . . . tall and brown-haired . . . her walk characterized by a shortness of stride . . . agreeably determined.

alice louise sparkes

33 grant street
taunton, massachusetts

basketball, dancing, newman club

. . . getting some joy out of life . . . no dance step too new or difficult . . . disagreeing with pestalozzi . . . and dewey . . . and davoren . . . reversing the convention of business before pleasure . . . joking . . . teasing.



katherine spillane

11 marietta avenue
east braintree, massachusetts

*kindergarten-primary club, hobby club,
garden club*

. . . the bane of traffic officers . . . her arguments truly backed by knowledge and intelligence . . . as temperamental as a prima donna . . . spirited.



elizabeth southworth

426 plymouth street
bridgewater, massachusetts

hobby club, basketball, soccer

. . . silvery blonde . . . dependable . . . for an evening of fun . . . or an hour of hard work . . . musical in all branches . . . steady . . . touch of vivacity . . . overtone of sweetness.



anna elizabeth sullivan

32 maple street
randolph, massachusetts

w. a. a. board, camera club, campus comment

. . . hail fellow, well met . . . seasoning classes with her pep . . . extremes of sobriety and joviality . . . outstanding in athletics . . . willing and able . . . untiring . . . losing her boyishness . . . richly human.



lillian marie sullivan

69 presidents avenue
quincy, massachusetts

kindergarten-primary club, garden club

. . . wit that often approaches the caustic . . . chief interests ranging from knitting to banana splits . . . from men of art to pickles . . . fun to laugh with . . . a light-hearted and broad-spirited disposition.





mary elizabeth sullivan

33 south walker street
lowell, massachusetts

french club, librarian of glee club, vice-president of dormitory council

. . . recommended for the white house
as banquet-handler . . . remember the
christmas dinner . . . jollity and smiles
. . . deepest of dimples . . . and bluest
of eyes . . . tactful . . . considerate.



ruth mayre sullivan

55 bigelow street
fall river, massachusetts

glee club

. . . out from between vogue's pages
. . . never displeased or annoyed . . .
even-dispositioned . . . red-haired at-
tractiveness . . . the cheery word for a
jerk from the depths . . . the considerate
act for smoothing out the bumps . . .
nice to have about.

gladys thomas

sheridan street
north easton, massachusetts

*campus comment, hobby club, topics of
the day*

. . . a definite opinion on everything
. . . the courage to stick to it . . . and
the ability to defend it . . . milly and
gladys: inseparables . . . reliable . . .
full of hard-headed, new england com-
mon sense.

elaine bona vanelli

26 high street
quincy, massachusetts

day student council, campus comment.

. . . dark and retiring latin . . . hiding
her light beneath a bushel . . . her ener-
getic efforts swelling our money-bags
. . . thoughtful . . . smiling . . . her
pursuit of the muse featured in campus
comment's pages.



dorothy marie vestburg

29 common street
weymouth, massachusetts

topics of the day club, hobby club

. . . a blue-eyed, flaxen-haired type to delight the eye . . . a genial, genuine attitude to warm the heart . . . impossibly deep dimples . . . truly fitted for her chosen profession . . . the original school-girl complexion.



virginia caroline viner

18 nilsen avenue
quincy, massachusetts

glee club, campus comment, french club

. . . a bubble of joy . . . efficiency coupled with vivacity . . . a quick and keen mind . . . beneath a crown of chestnut curls . . . writing blank verse . . . eagerly expressing an opinion . . . a loquacity interspersed with snappy chatter.



carol vollmer

17 curtis avenue
scituate, massachusetts

vice-president of library club, campus comment, student council

. . . tall, tanned, and terrific . . . lending her individuality to library club activities . . . suggestion of suavity . . . hint of languor . . . a soft-voiced drawl.



thomas larkin warren

state farm, massachusetts

president of b. t. c. a. a., manager of baseball, soccer

. . . poised president of a. a. . . an ideal tall, slim, dark setting for a tall, slim, blonde ideal . . . a smooth speaker and scholar . . . an authority on how to wear what when.





doris waters

14 oldfields street
roxbury, massachusetts

vice-president of french club, glee club

. . . joyful, enthusiastic, and sunny
. . . pulling through two successful mardi
gras . . . with flying colors . . . and un-
impaired disposition . . . a resourceful
nature that enjoys work.



helen webber

oak hill road
rutland, massachusetts

*secretary of library club, secretary of
woodward, glee club*

. . . tall brunette with a skip in her
walk . . . resurrecting the lost art of
the blush . . . lowering her head to look
naïve . . . and spoiling the act with a
grin . . . the good companion . . .
keen sense of the ridiculous.

anne wehter

21 garfield street
quincy, massachusetts

*w. a. a. council, garden club, president
of science club*

. . . a business like, calm manager of
science club . . . a brown-eyed twinkle
. . . seeing the funny side of life . . .
taking her modern dancing seriously
. . . quiet efficiency.

althea virginia weldon

41 columbia street
watertown, massachusetts

camera club, elections committee

. . . painstaking perfectionist . . . a
well-developed sense of humor . . . all
wool and a yard wide . . . ability to
fall in with others' ideas . . . yet not
losing sight of her own . . . easily dis-
quieted.



dorothy alice whittemore

42 overlook road

north randolph, massachusetts

orchestra, modern dance group, dramatic club

. . . harmonizing an interest in things scientific with a flair for things social
. . . worried over trifles . . . exponent of the pleasant word . . . definite in opinions . . . genial.



charles wintermeyer

4 walker street

weymouth, massachusetts

varsity baseball, campus comment, new-man club

. . . the original bashful boy . . . good-looking and friendly . . . once a long distance lover (detroit) . . . now appreciative of local talent . . . his individual baseball technique . . . making a buzz in the bees' bonnet.



charles emerson witherell

south worthington, massachusetts

campus comment, men's club

. . . going his own business-like reserved way . . . handing out campus comments . . . pondering over math and physics . . . at home with a fish pole . . . calling out square dances.



rowena wynot

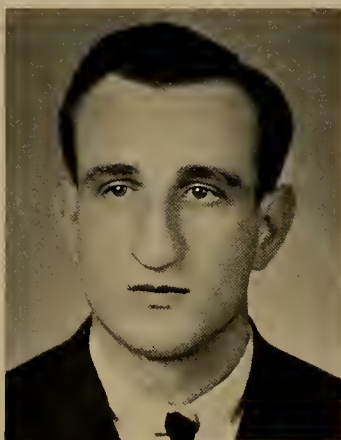
17 clark street

braintree, massachusetts

kindergarten-primary club, archery

. . . the sparkle of a toothpaste ad smile
. . . the good-nature of a well-balanced personality . . . the exuberance of health
. . . a pert little combination . . . leaving us wondering if worry really is a state of mind.





victor zubrycki

30 sanger street

bridgewater, massachusetts

topics of the day, soccer

. . . he of the scientific mind in class
. . . and of the destructive body in
soccer . . . often radical in thought
. . . mr. tyndall's friendly adversary.

leo henry cohen

14 balfour street

dorchester, massachusetts

topics of the day

. . . a walking chemistry department
. . . chief gigolo to the faculty ladies
. . . the man who made popeye a vital
part of any chapel program.

john harper

5 lincoln street

natick, massachusetts

. . . one of the greatest of bridgewater's
athletic greats . . . returned after a pro-
longed absence with no further pitching
ambitions . . . a true gentleman, jovial
but reserved . . . studying methods over
a groundwork of administrative exper-
ience.

mildred higgins

37 elmwood avenue

brockton, massachusetts

. . . lending the distinction of adult
opinions to our classes . . . mellowing
our theory with excerpts from a back-
ground of experience . . . an under-
standing manner . . . deliberate speech.

e. kendall scouten

chartley, massachusetts

orchestra, class ode committee

. . . good-looking cleric . . . with a re-
freshingly keen interest in life . . .
possessor of a program of record-breaking
weight . . . keeping classes alive with
his probing questions and enlightening
conclusions.

alpha

former members of the class of 1938

. . . virginia boutchie . . . of essex . . . has worked in the art department of a boston store . . . and spent a winter as tutor to some small children . . .

. . . dorothy chase . . . of orleans . . . was married three years ago . . . and as mrs. almond nickerson . . . has delightful twins, donna and dorothy . . . living in providence. . . .

. . . elaine dillon . . . of chicopee falls . . . is doing laboratory work . . . in a medical supply house in chicopee . . .

. . . katherine gavitt . . . of williamstown . . . has been mrs. howard latimer . . . of pittsfield . . . for two years . . . and has a small son, eric . . .

. . . marjorie hartford . . . of gloucester . . . graduates this june from boston university school of education . . .

. . . margaret reddie . . . of weymouth . . . became engaged a few months ago to john gould . . .

. . . isabel jenkins . . . of falmouth . . . is teaching a sub-primary grade . . . in falmouth . . .

. . . viola chassey . . . of bridgewater . . . attended an office practice school in boston . . . and is now working in an insurance office . . .

. . . margaret cooke . . . of fall river . . . married three years ago to lloyd dodge . . . has twin sons . . .

. . . dorcas moulson . . . of ware . . . is enjoying teaching in the wide open spaces . . . of center harbor in new hampshire . . .

. . . constance peabody . . . of beverly . . . is in the graduating class
from salem teachers college . . .

. . . maryrose riordan . . . of brockton . . . now mrs. richard larkins
. . . is living in weymouth . . .

. . . dorothy kirby . . . of fall river . . . is attending a secretarial
school . . .

. . . edward matthews . . . of weymouth . . . is assisting his father in
the shoe business . . .

. . . dorothy kellogg . . . of orange . . . is filling a civil service position
in our nation's capitol . . .

. . . elisabeth raymond . . . of west bridgewater . . . is governess in
new york city . . .

. . . marie bromley . . . of bridgewater . . . is substitute teacher in
bridgewater . . .

. . . beatrice barton . . . of wollaston . . . has been married since last
june to fred adams . . .

. . . emma bickford . . . of bridgewater . . . is married and is living
here . . .

. . . elizabeth dix . . . of brockton . . . married to hammond stanley is
living in brockton . . .

. . . gertrude king . . . of haydenville . . . has recovered from a recent
illness . . . we are glad to hear . . .

. . . marion gould . . . of wareham . . . is married and has a small
daughter.

junior class notes

president	william mcghee
vice-president	mary judge
secretary	rose leonard
treasurer	clement daly

. . . quoth tennyson: "the old order changeth, yielding place to new" . . .

quoth juniors: "instruction in college, intuition in training school" . . .

. . . the junior social . . . aurora borealis . . . icebergs . . . penguins

. . . but only the treasury shivered . . .

. . . the soph-junior prom . . . no "big apples" put through the mill . . .

but everyone has fun . . .

. . . the paragon of cooperative and socialistic rule . . . this june . . .

we and the vassar girls . . . next june . . . we.



junior class roll

albertini, albert paul
 allan, barbara sawyer
 allen, anne dean
 andrews, louise blanche
 augustine, john
 austin, jane elizabeth montgomery
 bailey, frank merrill
 barchi, rita edith
 bardini, mary
 barnes, marion elizabeth
 barrett, mary rita
 barton, amy bertha
 behan, geraldine margaret
 bentley, marjorie frances
 bertoli, lillian theresa
 black, virginia edith
 blaney, robert leonard
 bongarzone, elito
 boyd, gertrude elizabeth
 boyle, dorothy mary
 bragg, meredith cove
 brine, elizabeth gertrude
 burnett, john raymond
 butterfield, esther frances
 campell, helen
 carlson, judith viola maria
 chaput, marjorie louise
 cheetham, dorothy louise
 chisholm, mary bernadette
 church, elsie jane
 cole, evelyn arvilla
 coulter, herbert wesley
 crooker, frank charles
 currier, gertrude ricker
 daley, clement william
 day, harriet olive
 denault, edna frances

31 prince st., plymouth
 533 chestnut st., needham
 4666 north main st., fall river
 105 graham st., quincy
 244 south st., bridgewater
 47 school st., springfield
 9 sawyer st., wareham
 64 ledge rd., seekonk
 tyler ave., east wareham
 35 jefferson st., taunton
 15 carter rd., south braintree
 12 eustis st., wollaston
 pleasant st., holbrook
 20 keith st., weymouth
 66 madison st., quincy
 50 willow st., wollaston
 113 front st., marion
 76 madison st., east weymouth
 6 glenwood way, quincy
 chestnut st., hatfield
 112 randolph st., south weymouth
 73 prospect st., west newton
 32 thorndike st., somerville
 112 fremont st., lowell
 28 harbor villa, east braintree
 96 middlesex st., springfield
 20 ninth ave., haverhill
 430 read st., somerset
 18 guild st., quincy
 1431 washington st., south braintree
 23 park ave., attleboro
 washington st., south easton
 15 ruggles st., westboro
 105 prescott st., north andover
 210 highland st., brockton
 fruit st., norfolk
 26 ingell st., taunton



dewolfe, ellen barbara
 dinardo, vincent james
 dobson, gladys lorraine
 dorosz, alfred frank
 dunn, harry paul
 dunphy, mary elizabeth
 edwards, helen seale
 emery, rachel adeline
 farnham, philip clayton
 field, dorothy emily
 fischer, lilly irene
 fisher, karolyn
 fiske, marjorie gertrude
 francis, lillian mae
 fruzzetti, adeline
 galotti, phyllis frederica
 gannon, george francis
 gardella, dora rose marie
 gonet, joanna clara
 groht, elizabeth adella
 guzzi, rosina
 haggerty, earl
 haley, alice rita
 hancock, janet
 hannigan, walter edward
 harding, walter roy
 hayden, bettina lillian
 heenan, alice mary
 hern, dorothy helena
 hill, thelma louise
 hodgdon, william bernard
 holbrook, barbara thayer
 holtz, clara merium
 johnson, victor carl
 judge, mary rose
 kachan, theresa
 karimaki, violet lilly
 kaufman, charles william
 kelleher, rita julia
 kelley, helen elizabeth
 keohan, mary gertrude

30 chackatabot st., quincy
 98 edwards st., quincy
 4 parkins cl., taunton
 353 south st., bridgewater
 308 main st., bridgewater
 19 south main st., randolph
 14 arlington st., haverhill
 gardner's neck rd., swansea
 43 lincoln st., needham
 33 gen. cobb st., taunton
 158 west st., randolph
 108 cedar st., braintree
 158 main st., greenfield
 716 rockdale ave., new bedford
 1100 pleasant st., bridgewater
 2085 washington st., braintree
 659 broad st., weymouth
 8 south maple st., bradford
 russells mills rd., dartmouth
 52 bayview st., north weymouth
 243 arlington st., wollaston
 1 sunset st., rockland
 78 west st., randolph
 riverside ave., somerset
 288 k st., south boston
 54 prospect st., bridgewater
 208 billings st., north quincy
 450 pond st., rockland
 83 oak st., taunton
 207 brown st., waltham
 171 white st., south weymouth
 95 church st., north attleboro
 5 proctor st., haverhill
 bay st., north easton
 226 green st., brockton
 reservoir st., northboro
 1 sampo rd., quincy
 102 bickford st., jamaica plain
 189 dover st., brockton
 102 water st., quincy
 51 norfolk st., weymouth

kiley, dorothy frances	36 bruch hill rd., milton
lahey, katharine alice	10 nelson st., plymouth
lang, rita mary	weston ave., holbrook
lantz, doris elizabeth	629 union st., south weymouth
larsen, carol lillian	hixville rd., north dartmouth
leonard, rose mary	87 prospect st., weymouth
lovet, anna elizabeth	main st., hatfield
luce, walter anderson	main st., vineyard haven
luttet, helen hortense	104 cedar st., stoughton
lynch, rosalie marie	57 oliver st., malden
macleod, norma louise	49 endicott st., quincy
madden, margaret regina	35 greenway st., pittsfield
matteson, avis june	3 butler st., blackstone
maurer, ruth lucille	351 mass. ave., cambridge
mcfarlin, thomas huit	thompson st., middleboro
mcghee, william robertson	72 moffat rd., quincy
metevier, john louis	198 west water st., rockland
moore, mary louise	484 main st., bridgewater
moriarty, catherine elizabeth	11 falmouth ave., brockton
morrissey, margaret theresa	191 liberty st., rockland
mosher, ernine	140 read st., somerset
murphy, joseph francis	30 pleasant st., randolph
nylen, norma	58 ash st., stoughton
o'hayre, kathleen elizabeth	85 beal st., rockland
olsen, verne hamlyn	east st., wrentham
osgood, carolyn louise	266 farrington st., wollaston
osuch, louise nellie	1051 plainville rd., new bedford
paterson, henry finlayson	41 bradford st., quincy
payson, margery ward	34 snell st., brockton
penley, ruth abbie	174 birch st., bridgewater
perron, laura agnes	124 brown st., pittsfield
perry, robert	987 washington st., newtonville
quigley, mary louise	18 oak st., milton
reilly, john clifton	30 spring hill ave., bridgewater
reinhalter, marquerite lillian	53 kimball st., quincy
reposa, mary elizabeth	103 wheaton ave., seekonk
rizzi, helen rose	29 hayden st., quincy
roberts, helen rita	19 payson ave., rockland
roper, sylvia ann	princeton
rosenthal, leonard ellis	164 glenway st., dorchester
ryce, cynthia alice	38 washburn ave., cambridge
sanderson, constance taylor	16 hastings st., west roxbury
savarica, eleanor madeline	52 rimmon ave., chicopee
senesac, edmond everett	136 central ave., new bedford
shaw, charles albert	825 main st., south weymouth
shaw, madeline	88 pearl st., middleboro
sherman, marion frances	121 beech ave., melrose
shields, mary louise	42 franklin ave., rockland
skoczulek, joanna marion	71 hathaway st., new bedford
simon, naomi ruth	20 lemayne st., braintree
smethurst, clara	3123 riverside ave., pottersville
smith, frances	27 bates rd., milton
smith, jean elizabeth	pine hill rd., westport
snider, helen louise	washington st., duxbury
strange, ruth emma	12 cypress st., greenfield
sweinimer, louise christina	29 leavitt st., brockton
taylor, henry sidney	71 temple st., north abington
thebodo, kathryn mary	stanton ave., huntington
thomas, miriam	111 brook st., wollaston
torrey, barbara lois	5 torrey st., attleboro
trulson, beatrice verna	90 eliot st., norwood
turner, dorothy little	76 shore st., falmouth
turner, elizabeth gray	bow st., north reading
walton, barbara	26 morton ave., saugus
warren, esther georgette	65 housatonic st., lee
wastcoat, elizabeth jane	29 ellington rd., wollaston

sophomore class notes

president	martin killory
vice-president	alba martinelli
secretary	vernon nickerson
treasurer	barbara dobbyn

. . . the first symptoms . . . of that feeling of achievement and conquest
. . . which reaches its height . . . during the senior year . . .

. . . initiating the frosh . . . to all the various aspects . . . and problems
of life . . . at bridgewater . . . to the amusement of all the other classes . . .

. . . entering the social field . . . instrumental in the successful functioning
of the soph-junior prom . . . and the soph social . . .

. . . entering the athletic field . . . with an interest in both intra-mural
. . . and varsity sports . . .

. . . realizing the values and benefits . . . of courses . . . plus extra-
curricular activities . . . a year of gratifying our expectations . . . of
bringing nearer . . . our ultimate goal.



sophomore class roll

allen, mary elizabeth
 andrews, mary elizabeth
 baltzer, melba elizabeth
 batho, jeanne margaret
 bissett, ruth margaret
 boundy, marjorie power
 bowley, priscilla may
 bradshaw, florence anne
 breen, annette patricia
 brennan, mary janice
 briody, mynette margaret
 buckley, joan carol
 callan, francis edward
 cardoza, ida
 carter, mercia
 chadwick, ruth esther
 chambers, virginia ruth
 cole, alice hathaway
 crowley, alice marie
 curran, claire mary
 daly, phyllis lee
 davis, ruth
 decoste, mary evelyn
 deich, samuel isadore
 dobbyn, barbara elizabeth
 dobbyn, helen josephine
 doherty, genevieve christina
 drummey, catherine mary
 dzenowagis, john
 estey, elsie ruth
 tahey, elizabeth mary
 farrell, richard joseph
 fiore, jordan dominick
 fisher, olive lucile
 foster, elizabeth ruth
 freeman, barbara louise

16 smith st., taunton
 45 belmont st., brockton
 71 martland ave., brockton
 58 summit st., hyde park
 21 gilmore st., quincy
 476 school st., belmont
 high st., randolph
 read st., somerset
 15 cushioning ave., belmont
 62 east alvord st., springfield
 8 briggs st., taunton
 160 sea st., n. weymouth
 3 goddard rd., brockton
 56 winter st., taunton
 dutton st., new bedford
 francis ave., w. bridgewater
 107 waverly st., everett
 prospect hill, plympton
 214 neck st., north weymouth
 303 prospect st., norwood
 78 north st., randolph
 main road, westport
 34 bennington st., quincy
 77 willowwood st., dorchester
 44 fraxon ave., quincy
 289 palmer st., new bedford
 35 lee st., cambridge
 11 miller ave., e. braintree
 112 burrill ave., bridgewater
 324 bolivarst st., canton
 13 east broadway, taunton
 254 park ave., bridgewater
 80 quarry st., fall river
 51 faxon st., e. braintree
 east sandwich
 288 bedford st., bridgewater



gamble, muriel elizabeth
 garvey, anne frances
 george, ida gertrude
 george, irene
 gerry, zenon andrew
 gibson, elizabeth ann
 grundberg, eleonor marie
 hannan, dorothea christine
 harris, george foster
 harrington, mary bernardine
 harrison, eunice claire
 hatchfield, rosalie ann
 higgins, agnes elizabeth
 howes, barbara lee
 jenness, ellwood stephen, jr.
 judge, helen frances
 kelly, anna ferriter
 kelley, esther louise
 killory, martin francis
 kimball, elizabeth janice
 kravif, ruth rebecca
 lamkin, arnold haskell
 lang, albert anthony
 lans, rose vellamo
 larson, bertha angelyn
 laughlin, winifred marie
 lawler, edith margaret
 lesenschal, elizabeth
 lesenechal, joseph jules, jr.
 levenson, david eli
 levine, arnold
 lindquist, rheca marie
 lindsay, jean therese
 littlejohn, lois weston
 lockary, mary gertrude
 logan, muriel elizabeth
 luttet, barbara mildred
 macfarland, irving phillips
 mador, margaret edith
 manter, loretta whiten

228 pleasant st., brockton
 38 franklin st., brockton
 74 south st., wrentham
 43 plymouth st., holbrook
 810 pleasant st., brockton
 10 highland st., gloucester
 10 gould st., stoneham
 12 delaware st., brockton
 269 south main st., palmer
 92 webb st., weymouth
 old county rd., westport
 29 fullerton ave., whitman
 37 franklin st., whitman
 872 park st., stoughton
 pleasant st., natick
 226 green st., brockton
 185 billings st., quincy
 126 union st., bridgewater
 130 moraine st., brockton
 149 union st., east walpole
 38 chavenson st., fall river
 939 blue hill ave., dorchester
 weston ave., holbrook
 chapman st., walpole
 53 martin st., attleboro
 134 broadway, taunton
 331 nantasket ave., nantasket
 12 pearl st., north weymouth
 12 pearl st., north weymouth
 58 hunt st., brockton
 26 harrington ave., boston
 69 highland st., avon
 1348 main st., south weymouth
 plymouth st., middleboro
 223 randolph st., south weymouth
 15 old colony ave., wollaston
 104 cedar st., stoughton
 756 south st., bridgewater
 648 green st., cambridge
 23 anawan st., taunton

marquette, nance
 martinelli, alba
 mattie, irene may
 mattson, thelma
 mayo, harriette isabelle
 mccann, mary agnes
 mccarthy, margaret mary
 mcdonald, catherine veronica
 mcdonald, cecelia agnes
 mcgrory, anna louise
 mchugh, margaret
 mckean, carrie elizabeth
 mclaughlin, elizabeth
 meade, margaret mary
 meranda, josephine
 merrey, elizabeth may
 moore, gladys vernon
 mullin, eleanor mary
 murphy, margaret eleanor
 nerenberg, arnold lasrus
 newton, betty
 nickerson, vernon ward
 o'brien, patrick joseph
 o'neil, helen virginia
 o'rourke, mary juliette
 osberg, constance irene
 parent, anna elizabeth
 pearson, laura barbara
 pekarski, virginia anne
 peterson, tylene
 pinand, frances eldora
 pitts, eleanor anna
 prince, barbara elizabeth
 purtell, nan frances
 queenan, mary irene
 randall, edwin harold
 raymond, jane lillian
 richman, sylvia merilyn
 robinson, dorothy ellen
 rogers, william herbert
 russell, dorothy leith
 sanford, eileen
 scanlon, marie-louise delicia
 shnitzler, robert karl
 silviera, winifred mary
 skulley, william gerald
 smith, elizabeth berthia
 snow, ruth edna
 spatz, henry maxwell
 spencer, marion stone
 stein, miriam
 studley, marilyn walker
 taylor, barbara weston
 taylor, constance
 taylor, jean wilson
 tebbetts, helen elizabeth
 tobin, john francis
 trenear, lucille doris
 tripp, marion agnes
 trojano, lena anne
 tuomala, norma
 tyndall, john woodrow
 wall, grace margaret
 wall, irma aina
 wall, margaret mary
 walsh, eleanor elizabeth
 wardwell, geraldine frances
 21 fernwood ave., bradford
 11 westwood rd., plymouth
 674 commercial st., braintree
 18 grossman st., quincy
 orleans
 122 garfield ave., chelsea
 14 grand st., brockton
 102 crescent st., quincy
 30 hill st., east weymouth
 105 south main st., randolph
 1 hemlock st., east walpole
 17 hollis ave., braintree
 86 maple ave., bridgewater
 36 forest ave., brockton
 howland rd., assonet
 328 south st., bridgewater
 99 mt. prospect st., bridgewater
 56 high st., canton
 81 highland ave., arlington
 22 stellman ave., brockton
 roosevelt rd., weymouth
 bridge rd., orleans
 19 norfolk st., weymouth
 54 orange st., attleboro
 35 pontiac rd., quincy
 219 main st., fairhaven
 18 elgin st., stoughton
 348 wareham st., middleboro
 146 sawtell ave., brockton
 51 arthur st., quincy
 11 flynt ave., monson
 9 birch st., quincy
 north eastham
 272 eagle st., north adams
 38 chapel st., canton
 5 lake shore rd., natick
 buzzards bay
 352 center st., brockton
 sturbridge
 242 school st., taunton
 attleboro
 87 thacher st., attleboro
 42 arch st., middleboro
 5 greenheys st., boston
 12 summit st., gloucester
 488 ash st., brockton
 jordan road, dartmouth
 wolf island road, mattapoisett
 43 clifford rd., roxbury
 21 roosevelt rd., weymouth
 61 verchild st., quincy
 177 concord st., rockland
 10 riverdale road, wellesley
 prospect rd., plympton
 683 high st., westwood
 92 thurber ave., brockton
 25 winthrop ave., bridgewater
 1081 main st., south weymouth
 hathaway st., wareham
 137 pine st., brockton
 65 buckley st., quincy
 maple street, bellingham
 35 west ashland st., brockton
 24 brook rd., quincy
 723 pleasant st., brockton
 24 russell park, quincy
 276 belmont st., brockton

wentworth, alice louise
wheeler, mildred louise
whiting, jean orr
winsor, elizabeth
woodbury, doris ellen
woodward, gertrude kimball
woodward, henry francis
worthy, ruth
wright, elizabeth stevens
wright, marjorie rita
zatuchny, bernard victor
zeoli, harold wilson
ziemian, phyllis nancy

422 elm st., braintree
413 maxfield st., new bedford
11 mayflower st., plymouth
11 overlook ave., brockton
253 washington st., abington
main st., east norton
65 plain st., west bridgewater
239 northampton st., boston
55 dartmouth ave., dedham
69 allen st., braintree
44 hansborough st., dorchester
294 middle st., east weymouth
65 deven st., indian orchard

freshmen class notes

president

william edgar

vice-president

gertrude twohig

secretary

arlene weston

treasurer

loring felch

. . . usual routine . . . of arriving in september . . . and home the first
week-end . . . comedy a la grecque . . . on the administration building
steps . . . for the entire school population . . . the boys put on their act
. . . with the girls' blue bonnets . . . and black-stockinged legs . . . all in
a row . . . a definition of education . . . the sack rush . . . with the sophs
upset . . . by a frosh victory . . . several huskies . . . appear for soccer
. . . the acquaintance social . . . hi jah! . . . the book week teas . . .
emily post plus microscopic sandwiches . . . and in the spring . . . the
freshmen social . . . aren't they?



freshmen class roll

abbott, helen elizabeth	235 north street, somerset
acebo, amelia antonia	34 grossman street, quincy
anderson, ilmi	120 elm street, wareham
applebaum, arthur samuel	37 west tremlett street, dorchester
archibald, esther virginia	92 howard street, haverhill
barber, henry joseph	22 winter street, pittsfield
bartlett, irma grant	112 central st., foxborough
berch, lawrence	1700 south st., bridgewater
blackwell, robert	88 highland ave., taunton
borges, george	6 pleasant st., dighton
brazil, helen vincent	511 somerset ave., taunton
brigida, mary annina	112 water st. ext., plymouth
broderick, william john	392 high st., bridgewater
brown, edna louise	286 whitewell st., quincy
brown, esther mather	north westfield st., feeding hills
bruch, carey wentworth	church st., east raynham
buffington, barbara edith	fall river ave., seekonk
burrell, doris lillian	164 east st., east walpole
cameron, mary eleanor	35 chapel st., gloucester
ceddia, antonia john	59 hull st., boston
childerhose, margaret jean	86 bromfield st., wollaston
clouter, malcolm wilmont	main st., marion
coady, jean gale	box 364, monument beach
connelly, mary antonia	84 bartlett st., somerville
coveney, mary bernadette	30 riley ave., east weymouth
crian, eileen virginia	587 canton st., stoughton
crowell, nancy leach	45 brooks ave., newtonville
curley, leo michael	181 washington st., taunton
dimery, doris mae	420 pleasant st., north andover
doble, muriel elizabeth	494 pleasant st., south weymouth
donaher, katherine honora	50 saville ave., quincy
donahue, james patrick	93 chester ave., chelsea
dowd, john francis	428 high st., bridgewater
drummey, mary elizabeth	11 miller ave., e. braintree
dunkerly, alice constance	23 nye ave., brockton
durgin, jeannette louise	84 brow ave., braintree
edgar, william john	43 oak st., ludlow
ellard, mary elizabeth	248 presidents lane, quincy
fahey, ellen frances	108 warren st., randolph



fahnley, franklin edward
 felch, loring oliver
 fields, ethel
 filipson, elna linnea
 finn, mary janice
 fiske, helen marie
 fitzgerald, rita irene
 flemming, edward lee
 fontaint, dorothy ida
 forsyth, louise birnie
 fulton, elanor
 gamperoli, mary ellen
 giddings, dorothy
 govoni, barbara mae
 gregory, leona anne
 hall, marion estella
 halliday, marguerite anne
 harju, linnea elizabeth
 hatch, nancy vere
 hawes, florence mae
 healey, lucille frances
 hey, frances olive
 houlberg, nelson
 hull, virginia bickford
 jacobson, phyllis
 johnson, phyllis maxine
 kalaghan, louise ann
 kamandulis, florence anne
 kearns, william thomas
 kelly, marion
 kenney, doris louise
 king, ann loretta
 krupka, felicia rosalie
 kucinskis, nellie jennie
 kyte, mary frances
 larkin, mary evelyn
 latham, mary gertrude
 lyons, patricia elizabeth
 macdonnell, elizabeth malvena
 madan, marian ellen
 maiewski, camella rosalynd
 martin, ilene agnes

34 edwin st., dorchester
 14 custer st., brockton
 131 green st., brockton
 west st., attleboro
 225 high st., canton
 113 robbins st., waltham
 241 glumbian st., s. weymouth
 grove st., east taunton
 266 clara st., new bedford
 221 whitwell st., quincy
 beechwood st., cohasset
 450 main st., bridgewater
 45 taconic ave., gt. barrington
 77 grant st., somerville
 1034 washington st., weymouth
 52 hale st., bridgewater
 91 west elm st., brockton
 39 pine ave., brockton
 39 grandview ave., wollaston
 590 broad st., e. weymouth
 17 irving st., waltham
 123 union st., bridgewater
 hammond st., bridgewater
 46 emerson rd., watertown
 118 carroll ave., brockton
 14 robinson st., plymouth
 148 sea st., n. weymouth
 13 morgan st., brockton
 14 lafayette ave., e. weymouth
 21 bayfield rd., north quincy
 11 albion rd., wollaston
 87 west elm ave., wollaston
 7 fitch terrace, randolph
 740 washington st., stoughton
 108 myrtle st., waltham
 35 brunswick st., brockton
 80 lawn ave., quincy
 40 standish st., n. weymouth
 16 stratford rd., n. weymouth
 77 pleasant st., randolph
 south deerfield
 1264 south main st., brockton

marvill, lucile louise
 mccullough, helen elizabeth
 mcguire, mary catherine
 mckeachern, avis dinsmore
 mclaughlin, eleanor
 megas, nicholas
 milne, betty
 mitchell, gertrude mary
 morin, lisette marie
 mosher, ina mary
 murdock, pauline louise
 nash, carolyn
 nolan, catherine jane
 nutter, ruth hazel
 o'bryne, sadie josephine
 o'grady, rita mary
 olenick, madelyn elizabeth
 olson, eleanor caroline
 owens, elizabeth ann
 parkinson, walter wilbar
 paternaude, clare gertrude
 paternaude, doris mary
 pike, florence ethelyn
 plouffe, joseph francis
 postle, elizabeth faye
 pratt, marion
 pratt, suzanne francis
 pray, phyllis stuart
 querze, yone blanche
 quigley, jeanne harper
 read, robert john
 reed, jeanette lida
 richardson, agnes theresa
 richardson, alice currier
 roach, marguerite catherine
 robbins, beatrice
 rogers, lillian goodnough
 rosequist, donald
 rowe, eileen
 roy, jean marie
 rubolino, evelyn louise
 savage, james melvin
 sawicki, edward walter
 saxe, morris
 sclarenco, irving
 selivonchik, john
 shaff, sylvia hilda
 shea, mildred anna
 skahill, john joseph
 small, ruth edna
 smarsh, annie
 smith, ira
 smith, mary elizabeth
 sparkes, thomas michael
 strange, louise adelaide
 stoler, agnes dorothy
 stone, ruth roselyn
 szathmary, fannie
 taylor, winnifred florence
 thompson, shirley arlene
 turner, carolyn underwood
 twohig, gertrude alice
 tyndall, rowland henry
 vanannan, robert edward
 von bergen, elsa lora
 walsh, eileen josephine
 warren, lillian sylvia
 welch, harriett chace
 weston, arleen elizabeth
 wolfe, norma isabel
 wood, elizabeth burnham
 zoslosky, anastasia

turnpike st., eastondale
 60 holmes st., braintree
 1007 high st., fall river
 239 arnold st., new bedford
 180 hancock st., stoneham
 114 rock st., lowell
 168 sea st., quincy
 67 bigelow st., quincy
 61 wyman st., brockton
 420 crescent st., cochesett
 632 canton ave., milton
 34 chestnut st., brockton
 54 centre st., east weymouth
 64 elm st., norwood
 pleasant st., brockton
 69 vine st., new bedford
 17 gaudette ave., brockton
 174 e. spring st., avon
 15 harding st., lowell
 32 linden ave., fairhaven
 222 Broadway, taunton
 119 grant ave., medford
 40 cranberry rd., weymouth
 59 howard st., brockton
 25 laurel ave., brockton
 425 court st., north plymouth
 plymouth st., east carver
 15 rosalind rd., north weymouth
 sagamore
 42 union st., taunton
 summer st., north dighton
 394 quarry st., quincy
 20 perkins st., melrose
 20 perkins st., melrose
 682 eastern ave., fall river
 50 hunt st., brockton
 2041 south st., bridgewater
 706 west main st., avon
 30 maple ave., bridgewater
 burns ave., east walpole
 189 n. warren ave., brockton
 80 graham st., quincy
 547 center st., middleboro
 1232 blue hill ave., mattapan
 162 main st., quincy
 93 hale st., bridgewater
 21 washington st., taunton
 18 stickney ave., somerville
 5 everett st., wellesley
 new braintree
 390 bedford st., middleboro
 52 selden st., dorchester
 48 pleasant st., holbrook
 3 grant st., taunton
 hillside rd., south deerfield
 112 main st., quincy
 117 belmont ave., brockton
 31 mechanic st., quincy
 44 richmond st., brockton
 415 elm st., braintree
 76 shore st., falmouth
 82 manomet st., brockton
 35 maple st., bellingham
 20 ashmont st., dorchester
 44 hillside ave., wollaston
 132 elliot ave., north quincy
 249 center st., brockton
 chace road, east freetown
 22 woodside ave., brockton
 60 mass. ave., quincy
 74 nesmith st., lawrence
 49 north pleasant st., taunton



S.C.A. S.C.A. S.C.A.

student cooperative association

. . . the largest and most important organization of the college . . .
every student . . . automatically becomes a member . . . upon entrance
. . . a union of organizations . . . supervising all forms of student activity
. . . directly concerned . . . with the functioning of the college . . .
composed of the student council . . . dormitory council . . . day student
council . . . the men's club . . . the athletic associations . . . and all
standing committees . . .

. . . standing committees . . . concentrating on special fields . . . of
college work . . . including social activities committee . . . to plan the
social calendar . . . the lecture fund committee . . . to select speakers
and musical groups of distinction . . . the civic committee . . . bulletin
board committee . . . the elections committee . . . and the chapel com-
mittee . . .

. . . purpose of the organization . . . regulation of all matters . . . pertain-
ing to student life . . . not falling under the jurisdiction of the faculty . . .
fostering of a spirit . . . of unity and cooperation . . . maintenance of the
high standards of the college . . .

. . . obtainance of these objectives . . . through efficient work and effort
of the various councils . . . under the leadership and guidance of the
student council.

. . . besides its officers . . . the student council includes:

president dormitory council	alice blanchfield
president day students	magda borgatti
president men's club	william nolan
executive editor campus comment	olga skerston

standing committees:

lecture fund	kathleen kelly
chapel	helen edwards
civic	margaret carlson
handbook	june sherman
elections	avis mattison
scholarship	charles shaw
bulletin board	margaret carlson
social activities	shirley dutton

presidents of classes:

senior	george johnston	sophomore	martin killory
junior	william mcghee	freshman	william edgar

division representatives:

a1	eileen mcdonough	c2	edwin randall
a2	milton biller	c3	anna kelley
a3	mary metcalf	c4	virginia pekarSKI
b1	margery payson	c5	barbara taylor
b2	philip farnum	d1	arthur applebaum
b3	edna denault	d2	olive ney
b4	marjorie fiske	d3	alice richardson
b5	helen roberts	d4	mary brigide
c1	vernon nickerson	d5	florence kamandulie

student cooperative association



row 3—v. petrarski, g. johnston, w. mcghee, m. killory, p. farnham, e. randall, v. nickerson, m. payson.
row 2—h. roberts, a. kelly, m. carlson, o. skerston, f. kuchmeister, b. taylor, a. o'brien, e. mcdonough,
m. fiske.
row 1—m. borgatti, w. nolan, j. mccarthy, s. dutton, d. perkins, m. kispert, e. bazinet, c. daley,
a. blanchfield.

student council

president	dorothy perkins
first vice-president	shirley dutton
second vice-president	moira kispert
secretary	justin maccarthy
treasurer	ernest bazinet
assistant treasurer	clement daly

. . . a truly representative membership . . . consisting of men and women
. . . day and dormitory students . . . class and division representatives
. . . heads of outstanding activities and standing committees . . .

. . . work of the council . . . to act as intermediary . . . between faculty
and students . . . in raising the standards of scholarship . . . of conduct
. . . and of extra-curricular activities . . .

. . . aim of the group . . . to initiate the best movements . . . of student
collegiate life on the campus . . . to improve and broaden . . . the life in
the college . . . by making available . . . the best that is possible . . .
in cultural and educational achievement . . .

. . . attendance in the fall . . . of many of the members . . . at the
new england teacher preparation association conference . . . listening and
participating in the various panel discussions . . . feeling the conference a
valuable experience . . . realizing our standards compare favorably with
those . . . of other educational institutions represented . . .

. . . formation of an important new committee . . . to work for maintaining
. . . high scholastic standards . . . and for revising the point system . . .
thus limiting participation in extra-curricular activities.



seated—k. thibodo, m. sullivan, c. sanderson, f. kuchmeister.
standing—j. brennan, h. edwards, m. killory, h. dunn.

social activities committee

chairman
secretary

shirley dutton
estelle mackey

. . . upperclassmen meeting old friends . . . freshmen making new . . .
as the committee begins work . . . on social affairs for the college . . .
with the acquaintance social . . .

. . . hustle and bustle in the dormitories . . . much moving of beds . . .
and cleaning of rooms . . . and brightening with flowers . . . in prepara-
tion for the alumni weekend . . . the luncheon . . . the gym trans-
formed . . . for the tea dance . . .

. . . the contrast of tuxedos . . . and pastel evening gowns . . . the swing
of an orchestra . . . and the dancers . . . the anticipation . . . and the
enjoyment . . . of the first formal of the year . . .

. . . june . . . and graduation . . . endings and beginnings . . . bacca-
laureate sunday . . . traditional ivy march . . . and the daisy chain . . .
and the end, too . . . of a socially successful year . . . for s. a. c.

social calendar

1937 - 1938

september 24	acquaintance social
october 12	columbus day
october 15	senior social
october 29	plymouth county conference
november 5	n. e. teacher training conference
november 11	armistice day . . . end of quarter
november 12	dramatic club play
november 13	alumni tea dance
november 19	woodward social
november 24	thanksgiving recess
november 29	return to school
december 3	s. c. a. formal
december 10	junior social
december 17	christmas recess
january 3	return to school
january 7	s. a. c. social
january 14	sophomore-junior prom.
january 21	exams
january 28	close of first semester
february 4	men's club play
february 5	b. t. c. a. a. formal
february 11	mardi gras
february 18	winter recess
february 28	return to school
march 2	beginning of lent
march 4	campus comment
march 11	day student social
march 25	sophomore social
april 1	end of quarter
april 8	orchestra concert
april 15	good friday and spring recess
april 25	return to school
april 29	girls' glee club concert
may 6	freshman social
may 13	dramatic club play
may 20	alpha formal
may 30	memorial day
june 3	campus carnival
june 6-10	commencement week



row 2—f. kuchmeister, miss smith, mr. tyndall, miss rand.
row 1—w. gaudette, j. buckley, e. bazinet.

lecture fund committee

mr. balfour tyndall, chairman

miss frieda rand

miss grace smith

kathleen kelly, student chairman

ernest bazinet

meredith bragg

joan buckley

marjorie cleary

james dinardo

wilder gaudette

florence kuchmeister

. . . cooperating with chapel committee . . . to present to the student body . . . worthwhile speakers and musical groups . . . financed by a fund of contributions . . . from students and faculty . . . representing all classes . . . except the freshman . . .

. . . predominance this year . . . of current events and the arts . . . dr. chi of china . . . dr. minakuchi of japan . . . with latest news and contrasting views . . . of the far-eastern conflict . . .

. . . poet with the interesting name . . . and the interesting lecture . . . robert peter tristram coffin . . . in an hour of original poetry . . . and personal anecdote . . .

. . . classic string quartet . . . but the highlight of the year: blanche yurka . . . as therese defarge . . . in a reading from *the tale of two cities* . . .

. . . appointment of miss grace smith . . . as third faculty representative . . . and mr. tyndall . . . becoming chairman.

student
cooperative association

lecture fund programs

1934-1935

october 22		bronson de cou
	"dream pictures"	
november 17		clare tree major players
	"pocahontas"	
january 15		cornelia stratton parker
	"travel versus college education"	
february 4		john erskine
	"a better education"	
may 27		prof. j. anton de haas
	"economic conflict in the world"	

1935-1936

november 1		john martin
	"the ancient art of modern dancing"	
november 4		dr. john haynes holmes
	"is our present civilization worth saving?"	
january 3		dr. clarence f. jones
	"the highland indians of peru and bolivia"	
march 30		dr. william lyon phelps
	"contemporary books"	

1936-1937

october 1		boston symphony orchestra
	woodwind ensemble	
february 10		james powers
	"can europe make peace?"	
march 30		rockwell kent
	"art is for everyone"	
april 29		carl sandburg
	"american folk songs and tall tales"	

1937-1938

september 30		dr. howard w. haggard
	"medical fads and superstitions"	
november 2		dr. chi-ao-ting chi
	"the present conflict in the far east"	
december 6		blanche yurka
	"the ever-expanding theatre"	
march 8		yutaka minakuchi
	"japan's policies in the far-eastern conflict"	
march 16		robert peter tristram coffin
	"my poetry as part of my life"	
may 3		forum string quartet
	classical selections	



row 3—j. skoczulek, b. trulson, b. taylor, e. harrison, g. currier.
row 2—e. cole, e. fields, m. francis, h. webber, m. wheeler, r. small.
row 1—r. murphy, m. sullivan, a. blanchfield, b. polsey, j. smith.

dormitory council

president	alice blanchfield
vice-president	mary sullivan
secretary	barbara polsey
treasurer	amy perry

. . . assuming responsibilities last june . . . taking charge of the supper
for the graduating class . . . on baccalaureate sunday . . . continuing
responsibilities last fall . . . opening the dormitories to parents and friends
. . . that they might taste of bridgewater hospitality . . . and friendliness
. . . for the sunday of open house . . . welcoming back old grads . . .
for alumni weekend . . . making them comfortable . . . and at home at
home . . . planning the luncheon for the alumni . . . highlight of all highly
organized affairs: the combined christmas dinner . . . and inauguration
banquet for our new president . . . working with the faculty . . . to make
this an experience . . . worth the planning . . . and the remembering . . .
extending the privileges of the dormitory girls . . . with out-of-town week-
end permissions . . . and the underclassmen . . . gaining the joy of study-
ing . . . and listening to the goodman swing session . . . cooperating with
. . . and achieving the cooperation of . . . the girls in the dormitories.

student
cooperative association

woodward hall

president	rita murphy
vice-president	lillian shaw
secretary	helen webber
treasurer	marilyn francis

. . . royal road to romance . . . out the door of wood . . . and to the right . . . house meetings . . . the first monday of every month . . . fun with occasional refreshments . . . "he's here!" . . . suppers in the kitchenette . . . finding that the longest way around . . . is not the shortest way home . . . but getting fire-proof stairs . . . for our efforts . . . food sales . . . the experience of dormitory life . . . colored with fun and frolic . . . strengthened with study and probing discussions.

tillinghast hall

president	kathleen kelly
vice-president	joanna skoczulek
secretary	kathryn thibodo
treasurer	wilma newsome

. . . reputation of residents as perpetual workers fast fading . . . with the piano in the reception room vibrating incessantly . . . from mozart to rosalie . . . with modern dance compositions produced to order in the corridors . . . with stairway conversations about "him" . . . the roof popular at all hours of the day or night . . . to view aurora borealis . . . or to sweep rugs . . . interior decoration notes . . . a new paint job . . . colorful chintz draperies in the reception room . . . chinese maze . . . dining-hall tables changed about . . . rain in buckets . . . petition for a new fire alarm in order.



row 3—n. dewolfe, l. trojano, t. peterson, e. postie, b. robbins, d. hern.
row 2—l. francis, e. parent, m. smith, m. coveney, m. tripp, s. richman, v. black.
row 1—k. graham, v. viner, j. lindsay, m. borgatti, r. penley, e. cadwell.

day student council

president	magda borgatti
first vice-president	ruth penley
second vice-president	alice haley
secretary	jean lindsay
treasurer	dorothy cushman
assistant treasurer	mary moore

. . . autumn breezes in . . . little sister breezes out . . . at the big-little sister party . . . hallowe'en party and faculty introduction to commuters . . . comments indicating enjoyment . . . songs, games, refreshments . . . geographic raconteur excelling as doughnut absorber . . . perfect fall atmosphere in recreation room . . . done in tan, brown, and orange . . . new lounge chairs . . . for luxurious studying . . . or gentle chit-chat . . .

. . . december blusters in . . . hot soup at lunch keeps it out . . . a soup line makes a square meal . . . everyone trouping to the social . . . over-nighters . . . enjoying the advantages . . . without the annoyances . . . of dormitory life . . . in their newly furnished rooms in wood.



clubs clubs clubs



row 3—d. turner, a. sullivan, r. leonard, r. lynch, g. dobson, d. levenson, w. harding, l. rosenthal, j. fiore, r. blane, v. hull, j. carlson, l. andrews, l. perron.
row 2—r. maurer, m. marrosey, m. thomas, m. francis, e. vanelli, m. connell, m. donahoe, v. chadwick, e. creny, m. bentley, m. carlson, c. curran, w. silveira, e. mackey, c. holtz, l. pearson.
row 1—m. shaw, w. nolan, b. polsey, a. o'brien, o. skerston, miss lovett, e. savaria, c. witherell, e. mcdonough, c. vollmer, l. radlo, v. viner.

campus comment staff

executive editor
assistant executive editor
associate editors
editorial editor
junior editor
assistant
news editor
junior editor
sports editors

olga skerston
eleanor savaria
madeline shaw; william nolan
eileen mcdonough
rose leonard
muriel logan
anna o'brien
barbara torrey
c. shaw; g. behan; c. wintermeyer

reporters

m. morrissey
m. thomas
l. pearson

j. fiore
m. bentley
v. viner

l. radlo
m. donahoe
a. sullivan

business manager
assistants
feature editor
junior editor

charles witherell
l. rosenthal; e. levenson; r. blaney
barbara polsey

feature writers

e. vanelli
j. carlson
m. carlson

k. flaherty
w. harding
r. lynch
m. moore

v. chadwick
e. creny
l. pearson

technical editor

carol vollmer

assistants

m. connell
l. perron
d. turner

m. francis
w. silveira
c. curran

c. holtz
c. sanderson
r. maurer

g. dobson

d. gardella

campus comment

. . . a year of change . . . of new policies . . . making positions on the
staff harder to get . . . and more to be desired . . . of monthly meetings
. . . and of teas . . . of an energetic and tireless editor-in-chief . . .
. . . of electing bill nolan as our king for mardi gras . . . of an ultra-modern
robot . . . writing caustic comments on our float . . . and afterward . . .
guarding the entrance to wood . . .

. . . of campus comment going to a baby party . . . blue and white
checks and little girl braids and buster brown collars . . . short skirts
and shorter shorts . . .

. . . of a style show . . . exhibiting the smoothest in gowns and girls . . .
of the columbia press association conference . . . attended by several
delegates . . . of miss lovelt's cheery equanimity and indispensable help.

oh, i pray
that the snow will blush
more deeply,
that the shadows will purple
the blue glens,
and the ice will glaze copperly
on the dark trees—
on christmas eve.

that will be
the loveliest kind
of foreshadowing.

—margaret meade



row 3—r. farrell, h. dunn, e. bungarzone, j. mccarthy, e. senesac, e. levenson, f. callan.
row 2—m. meade, h. schneider, a. blanchfield, b. trulson, e. mullens, e. murphy, l. sweinimer.
row 1—d. whittemore, f. bailey, m. moore, miss low, b. bump, m. goldstein, g. foley.

dramatic club

president	benjamin bump
vice-president	mary moore
secretary	frank bailey

. . . curtain, lights! . . . dramatic club takes its bow . . . with a record membership of twenty-seven . . . youthful thespians at tryouts . . . casting of the panther's claw . . . november 12 . . . play presented . . . november 13 . . . karloff retires . . . the christmas banquet . . . making a sacrifice for art . . . the club dining en masse far from loved ones . . . who hath not seen . . . original play by miss low, the adviser . . . the holiday party . . . producing for the spring play . . . the classic silas marner.

dramatic club productions

the panther's claw

cast of characters

clifton king	benjamin bump
norma	beatrice trulson
elaine	mary lou quigley
jake mccord	edmond senesac
jerry freeman	justin mccarthy
luther stone	joseph plouffe
carl blythe	harry dunn
tony	d. eli levenson
hope fenwick	helen snider
olive dale	dorothy kiley
edith dale	dorothy whittemore
tillie lish	mildred goldstein

silas marner

cast of characters

eppie	nancy hatch
silas marner	francis callan
dr. kimble	frank bailey
jem	edmond senesac
dolly	mildred goldstein
nancy lammeter	eleanor mullen
jane gunn	helen fiske
mary gunn	eleanor murphy
priscilla lammeter	rosalie lynch
mr. lammeter	george harris
aaron winthrop	richard farrell
martha kimble	grace foley
godfrey cass	d. eli levenson
dunstan cass	lawrence berch
master bryce	harry dunn
squire cass	elito bongazone



row 1—e. creny, g. courant, w. silveira, c. moriarty, m. gouszis, g. dobson, miss bradford, m. reynolds,
d. waters, m. borgatti, j. paul, v. viner.
row 2—r. small, j. brennan, d. fontaine, c. patenaude, r. guzzi, e. gibson, e. brown, d. burrell,
w. laughton, e. gundberg, l. healy, l. morin.
row 3—w. kearns, n. hatch, l. anderson, e. senesac, e. postle, j. roy, o. day, h. spatz.

le cercle francais

présidente	gladys dobson
lère vice-présidente	martha reynolds
2ième vice-présidente	doris waters
secrétaire	mary gauszis
trésorière	nam purtell
bibliothécaires	jean taylor et joan buckley
reporteur	catherine moriarty

. . . l'histoire du mardi gras . . . chaque membre avait une tâche . . .
programme, invitations, billets, décors, hospitalité, costumes . . . puis, la
"riviera" . . . savoir-faire au clair de la lune . . . impromptu de lucien
lelong . . . parade des chars . . . serveuses en rouge et blanc . . . café
au balcon . . . pâtisseries . . . roi et reine en blanc, argent, et or . . .
la farandole . . . les pages en bleu et blanc . . . bataille de fleurs . . .
père carême . . . samedi matin . . . confetti sur le plancher . . . la
solitude . . . des masques oubliés . . . souvenirs heureux jusqu'au prochain
mardi gras.



row 2—l. stange, c. nash, f. kamandulis, w. taylor, e. mccullough, b. robbins, g. twohig, p. jacobson,
a. zolosky.
row 1—a. acebo, l. warren, k. graham, e. hayden, e. levenson, l. sweinemer, m. studley, f. szathmery.

der deutsche verein

president	betty hayden
first vice-president	eli levenson
second vice-president	louise sweinimer
secretary	meredith bragg
treasurer	kathleen graham
librarian	elizabeth turner

. . . promoting a friendliness and understanding toward germany . . .
through correspondence . . . increasing a knowledge of german culture
. . . through discussion of german art, music, and literature . . . develop-
ing a skill in spoken german . . . through use at meetings . . .

. . . initiation meeting . . . roll call . . . bremen, dresden, hamburg,
munich . . . club pledge . . . dr. leining's travel talk on germany . . .
the christmas party . . . pfeiffer family . . . refreshments: german pastry
and coffee . . . presentation of *das abenteuer neujahrs nacht* . . . some
members in the cast . . . the song festival . . . punch and cookies . . .
current events . . . report on german feast days . . . installation of new
officers . . . the banquet.



row 3—e. mcdonough, j. austin, l. forsythe, a. matteson, g. dobson, j. carlson, r. strange, e. grundberg, a. richardson, p. hull.
row 2—m. kispert, b. allan, d. fontaine, d. giddings, e. smith, m. sherman, r. lans, r. maurer, b. prince, e. sanford, g. courant.
row 1—m. connell, c. vollmer, m. francis, miss vining, miss carter, p. kuchmeister, h. webber, b. polsey.

library club

president	florence kuchmeister
vice-president	carol vollmer
secretary	helen webber
treasurer	marilyn francis

. . . the meaning behind the initial b? . . . unofficial motto: good books and good food . . . intellectual well-being . . . fortified by reviews of *northwest passage*, *katrina*, *the travels of haijii baba*, *conversation at midnight*, and *the arts* . . . physical well-being . . . fortified by the initiation party, the desert party at miss hill's house, the food sale, and the outdoor hot-dog roast . . . roll call of favorite authors . . . allen, willa cather . . . austin, sigrid unset . . . success story: from queen of library club to queen of mardi gras . . . play-goers enjoy the lunts in *the sea-gull*.

ballade on books

broncho bustin', restless cattle,
wild stampedes, and "two-gun petes",
risky rustlin', barroom battles,
shootin' sheriffs, desert heat,
bar b ranches, necktie parties,
round-up time and campfire cooks,
wild horse mesas, faithful doggies—
—live and breathe for you in books.

bill and coo'ing, lovers's prattle,
heroines demure and sweet,
racing pulse and blushing tattle,
hearts that wildly throb and beat,
moonlight, music, orchids, candies,
burning lips and hidden nooks,
wildest rapture, charming dandies—
—live and breathe for you in books.

phantom killers, human chattel,
hilts of daggers, "stiffs" and sheets,
whining bullets, deep death rattles,
midnight prowlers swag secrete,
piercing screeches, witches' cronies,
frankensteins, detectives, crooks,
gangsters' molls, and manchu phonies—
—live and breathe for you in books.

envoy

every dream that you're rehearsing,
every hope you e'er forsook,
every place and thing and person
—lives and breathes for you in books.

—r. lynch



row 3—m. kyte, a. richardson, e. filipson, v. hull, n. simon, t. kachan, p. lyons.
row 2—j. gonet, f. pinand, r. lans, b. larson, s. pratt, m. hawes, m. wheeler, e. smith, h. o'neil.
row 1—c. larson, e. murphy, r. strange, mr. stearns, m. fiske, e. wood, e. mackey.

garden club

president

marjorie fiske

vice-president

ruth strange

secretary

kathryn thibodo

treasurer

eleanor murphy

. . . initiation into the vegetable kingdom . . . corsages of vitamins . . .
and carrot and peanut-butter sandwiches . . . thirty-one earnest horti-
culturists . . . cutters, planters, grafters . . . the arboretum flowers, trees,
bees . . . auditorium christmas decorations . . . poinsettias on stage . . .
pinus strobus garland . . .

. . . over two hundred attending the flower show in boston . . . finding it
lovely beyond imagination . . . meetings combining the theoretical . . .
reports and discussions . . . and the practical . . . making cuttings or
potting plants . . . t c . . . the unknown.



row 3—m. dumphy, i. wall, h. judge, m. larkin, l. gregory, g. twohig, o. foshier, p. johnson, d. turner, m. hallisey, m. mccann, d. patenaude, m. shields, p. murdock.
row 2—m. connelly, t. kachan, e. oison, m. smith, n. hatch, m. harrington, m. cameron, e. levenson, l. manter, k. o'hayve, m. olenick, b. dobbyn, c. macdonald, s. o'byrne, c. crummery.
row 1—b. dewolf, l. healey, f. kroupka, m. goldstein, r. guzzi, h. kelley, j. paul, g. crowell, g. thomas, e. cadwell, j. meranda, f. bertoli.

hobby club

president	doris dennison
first vice-president	helen kelley
second vice-president	jeannette paul
secretary	beatrice barton
treasurer	rosena guzzi

. . . forty women and two men on a hobby horse . . . with a nosebag full of stamps, dolls, shells, coins . . . match covers, pencils, bottles . . . with a few wild oats . . . in the form of an initiation party . . . christmas party . . . and the final farewell party . . . not to except . . . the entertaining and educational meetings . . . truly a haven for hoarders . . . enriching the leisure moments of its members.



row 3—*a. albertini, v. nickerson, r. blaney, e. randall, f. bailey, r. crooker, j. metevier.*
row 2—*l. osuch, b. luttet, e. merrey, b. taylor, w. hannigan, j. taylor, b. hayden, b. larson, w. newsome.*
row 1—*s. fleish, e. savaria, a. wehter, miss graves, m. barnes, j. skoczulek, e. harlow.*

science club

president
vice-president
secretary
treasurer

anne wehter
eleanor savaria
marion barnes
joanne schoczulek

. . . the pioneer of extra-curricular activities . . . at bridgewater . . .
an opportunity for the embryonic scientist . . . to go beyond the classroom
. . . to understand the latest developments in science . . . requiring a true
interest in things scientific . . . and a good scholastic rating . . . for
membership . . .

. . . the surrealistic initiation party . . . where we looked for . . . a brush
of white hair . . . eyelashes from north to south . . . lipstick's social
usage . . . economic's overshoes . . . einstein's lesson plans . . . heady
shoelace . . . muse's magic wand . . . apollo's p. f. i. . . . performed
with the faculty in mind . . .

. . . field trips . . . amateur motion picture operators . . . formaldehyde
. . . visual education . . . excursions . . . hot dogs . . . to woods hole
. . . getting a first-hand view . . . of the home life of marine creatures.



row 3—c. kaufman, h. dunn, w. parkinson, h. barbour, a. dorocz.
row 2—w. rogers, c. holtz, l. perron, a. mattson, e. butterfield, l. bertolli, j. murphy.
row 1—a. weldon, j. smith, m. francis, m. connell, j. chicetti, a. sullivan, b. polsey.

camera club

president
vice-president
secretary
treasurer

joseph chicetti
mary connell
john g. smith
clara holtz

. . . progressively adopting new policies . . . pleurably enjoying new activities . . . enthusiastically learning more about the technicalities of photography . . .

. . . recording memorable moments of campus life . . . and worthwhile highlights of fine photography . . . in an album of snapshots . . . and an album of enlargements . . .

. . . return of the prodigal adviser . . . mr. reynolds lectures on composition . . . illustrates with blackboard sketches . . . parkinson wins a double victory . . . with his dramatic enlargement . . . judged the best for the month . . . and fitting in so well with *alpha's* modern make-up . . .

. . . from beneath the layers of dust . . . the dark room emerges . . . into a studio . . . the secretary's reports becoming . . . rather informal . . . the entire group travels to boston . . . and winds up the year . . . with a visit to the beach . . . at the cottage of the new adviser, mr. tyndall.



kindergarten primary club

president

kathryn flaherty

vice-president

madeline shaw

secretary

dora gardella

treasurer

jean smith

k. p. professionally . . . meetings in a miniature world . . . preparing for work in kindergarten and primary grades . . . promoting a better understanding of small children . . . learning of new developments and the ever-increasing importance of the kindergarten . . .

k. p. educationally . . . speakers . . . miss thorndike . . . m. a. c. e. convention . . . conferences . . . visits to other kindergartens . . .

k. p. socially . . . tea dances . . . food sales . . . sugar and spice and everything nice . . . parties . . . penny sales . . . modern simplicity of mardi gras float . . . froebel's tools of knowledge, the sphere, circle, and square.



mr. mcgurren, w. nolan, r. farrell, h. dunn, e. senesac.

boyden men's club

president	william j. nolan
vice-president	harry dunn
secretary	edmund senesac
treasurer	milton biller

. . . membership . . . including every man student in the college . . .
second largest democratic organization . . . first father and son night . . .
with a banquet in tillinghast . . . and mr. mcgurren, faculty adviser, as
toastmaster . . . distinguished guests and special speakers . . . enter-
tainment by a group from the men's glee club . . . novel and successful . . .
. . . the club play . . . tryouts for parts . . . the last of the female imper-
sonators . . . and the men actors aided and abetted . . . by selected
women performers . . . the first year . . . entertaining . . . light . . .
human . . . coach davoren . . . surprised with a party . . . by the cast.



seated—b. prince, b. taylor, e. harrison.
standing—j. taylor, miss davis, h. patterson, w. edgar.

student fellowship group

president	barbara taylor
vice-president	jean taylor
secretary	barbara prince
faculty adviser	ruth e. davis
clerical adviser	reverend myron bunnell

. . . sunday at six-forty-five . . . group of sometimes fifteen and sometimes forty . . . a knowledge of ancient and foreign religions . . . brought by resumes of student leaders . . . hinduism, judaism, confucianism, buddhism, mohammedanism . . . and christianity . . . a new series . . . explaining the views and principles of the protestant churches . . . baptist, methodist, episcopal, congregational, and unitarian . . .

. . . members of all faiths . . . invited to attend . . . to learn . . . to feel . . . and to grow . . . visitors from the council of churches . . . illustrated lectures . . . discussions and debates . . .

. . . miss davis' quiet guidance . . . the felt loss of mr. bunnell's departure . . . strength . . . interest . . . fellowship.



newman club

president	mary alice connell
vice-president	marjorie chaput
secretary	katherine moriarty
treasurer	richard dwyer
federation delegate	james dinardo

. . . bowed heads and the opening prayer . . . business . . . reports and
 comments . . . choir successfully accomplishing its aim . . . the communion
 breakfast . . . mr. reynolds . . . commenting on the place of religion in
 art . . . father daly of holy cross cathedral . . . talking on modern books,
 a combination of good literature and bad . . . boston college debating
 society . . . fiery discussion on catholic education . . . state auditor thomas
 buckley . . . practical and genial . . . the question box . . . a conglomera-
 tion of the everyday and the imaginary . . . charity . . . baskets of good
 things and happy children . . . the federation . . . sunday trips to boston
 . . . more business . . . yes . . . but . . . the motion to adjourn . . . aye!



row 3—r. read, w. scully, e. jenness, a. applebaum, m. saxe, a. lamkin.
row 2—w. hannigan, e. haggerty, j. fiore, b. zatuchney, l. flemming, w. parkinson, m. clouter, miss rand.
row 1—j. mcgovern, e. skahill, j. dinardo, r. dwyer, p. farnham, h. paterson, j. chicetti, n. megas.

men's glee club

president	richard dwyer
vice-president	philip farnum
secretary-treasurer	james dinardo
librarian	henry patterson

. . . talent search of '37 and '38 proves successful . . . carols for the
christmas play . . . romeos serenading juliets at one a. m. . . . furnishing
the tenors and bases . . . for that far-famed a cappella group . . . overcoming
the handicaps . . . of the pull of athletics . . . and training periods . . .
to build up . . . a really worthwhile organization . . . supplemented by the
women's glee club . . . culmination in the spring concert.



row 3—e. fields, m. studley, b. winsor, w. laughlin, m. chaput, e. kelley, d. kiley, d. cheetham, m. wall, b. taylor, a. breen, m. thomas, n. marquette, j. brennan, e. harrison, e. mosher.
row 2—m. sherman, r. cole, g. moore, c. patenaude, n. purtell, m. madden, e. mcLaughlin, e. murphy, e. westcoat, n. hatch, r. small, h. fiske, m. reposa, j. austin, r. bacchi.
row 1—k. thebodo, r. sullivan, k. graham, m. sullivan, r. murphy, w. silveira, t. hill, miss rand, b. trulson, l. shaw, m. cleary, a. nye, m. mcgloin, m. fiske, f. szathmary.

women's glee club

president	mary donahue
vice-president	thelma hill
secretary	beatrice trulson
librarians	virginia chambers winifred silveira

. . . seventy nightingales . . . with beautiful tone and close harmony
. . . the cold, quiet common . . . thrilled listeners . . . music's in the air
. . . and the college feels proud . . . of its radio stars . . . trained voices
. . . blending with the men's . . . at the spring concert . . . conscientious
attendance at every meeting . . . participating in every important college
affair . . . from inauguration to graduation.

glee club concert program

the combined glee clubs

assisted by

howard goding, pianist

1. i know a bank
orpheus with his lute
inconstancy
full fathom five
song of the pedlar

horn
sullivan
chadwick
ireland
williams

women's glee club

2. carnival scenes in vienna—first movement
mazurka in g minor
polonaise in f sharp minor

schumann
chopin
chopin

howard goding

3. four love songs
"was once a pretty, tiny birdie"
"in wood embowered"
"no, there is no bearing with these spiteful neighbors"
"secret nook in shadey spot"

brahms

women's glee club

intermission

4. proudly as the eagle
the cossack's song
the last mile
the hunter's farewell

spohr
williams
danish folk song
mendelssohn

men's glee club

5. the island spell
 triana
pantomime
rhapsody in c major

ireland
albeniz
de falla
dohnanyi

howard goding

6. jesu, joy of man's desiring
how lovely are the messengers

bach
mendelssohn

combined glee clubs



row 3—m. judge, i. sclarenco, v. johnson, e. senesac, a. lenine, b. zatuchny, h. taylor, v. olsen, z. gerry, i. macfarland, w. coulter, f. krupka.
row 2—l. cohen, j. skoczulek, m. smith, m. larkin, e. mcloughlin, g. twohig, g. wardwell, m. wall, t. peterson, i. george, m. daly, a. kelly, s. o'byrne, w. gaudette.
row 1—j. smith, v. kundiz, m. gauzis, f. jagello, h. kelley, w. harding, e. dreney, j. metevier, g. thomas, g. crowell, a. leonard, e. koskela.

topics of the day club

president	eileen creney
first vice-president	francis jagello
second vice-president	helen kelley
secretary	john metevier
treasurer	walter harding

. . . stimulation . . . of current thought . . . information . . . on current events . . . animation . . . of current discussions . . .

. . . organization of the "ists" . . . pacifist, socialist, anarchist, economist, or sociologist . . . all these aspects . . . dissected and speculated upon . . .

. . . solvers of world problems . . . government control of industry . . . japanese invasion of china . . . hitler's movements . . . war and peace . . . swing . . . how to peel the "big apple" . . .

. . . onlookers at the passing scene . . . lectures . . . special reports . . . heated debates . . . general discussion . . . of topics of the day.



row 2—y. quenze, h. luttet, m. clouter, w. mcghee, p. farnham, w. scully, n. nylen, e. mccullough.
row 1—j. hancock, r. emery, j. sherman, f. crooker, miss rand, t. paterson, h. paterson, e. walsh, v. hull.

orchestra personnel

frieda rand, conductor

violins	trumpets	trombones
luttet, h. concert mistress	sclarencio, i.	farnham, p.
paterson, h.	mcghee, w.	johnston, g.
nylen, n.		clarinets
kaufman, c.	piano	mccarthy, j.
emery, r.	chambers, v.	buckley, j.
peterson, t.	mosher, i.	
sherman, j.		saxophone
walsh, e.	violoncellos	gardner, c.
trulson, b.	knuttunen, s.	
quenze, y.	gurney, e.	horn
crooker, f.	cleaves, b.	scouten, e.
hancock, j.	whittemore, d.	
	mccullough, b.	percussion
viola	worthy, r.	skully, w.
garvey, a.	winsor, b.	turner, d.

esther kelley at the piano with the string ensemble.

officers

student directors	justin mccarthy sylvia knuttunen
student executive	henry patterson
secretary	tynne peterson
librarians	frank crooker june sherman

orchestra concert

program

1.	
shepherd's dance — from "rosamunde"	schubert
unfinished symphony in b minor	schubert
first movement — allegro moderato	

2.

songs	
pilgrim's song	tschaikowsky
none but the lonely heart	tschaikowsky
with a water lily	grieg
aria: "eri tu" —	verdi
from "un ballo in maschera"	
walter kidder	

3.

romance and minuet—	mozart
from "eine kleine nachtmusik"	
string ensemble	

4.

exaltation	coerne
------------	--------

intermission

5.

waltz — artist's life	strauss
-----------------------	---------

6.

songs	
bid me to live	hatton
up from my tears	weaver
when i think upon the maidens	head
clouds	charles
nichavo (nothing matters)	mana-zucca
walter kidder	

7.

saeterjentens sondag	ole bull
(solitude on the mountain)	arr. by svendsen
string ensemble	

8.

northwind march	chambers
-----------------	----------

i can hear the
garden going to sleep all rustling—
the silken stir of a breeze
in the cups of lion-bearded irises,
a blue bug, closing and
unclosing his scissors,
and the sighing of falling petals
as a purple rose shakes her head.
i am sleepy, too.
go away, moon.

—margaret meade

fatigue . . .

a yearning backward to the womb . . .
the thickening fingers of the mind
push out to grasp
a half-remembered nothingness.
. . . is it nothingness you find? . . .



athletics athletics athletics

w. a. a. council

executive board

president	margaret mcgloin
vice-president	virginia chadwick
corresponding secretary	ada roberti
recording secretary	marie rudd
treasurer	sylvia knuttenen
financial secretary	violet kundiz
assistant treasurer	norma tuomala
assistant financial secretary	lillian francis

advisory board

director of soccer	mary bardini
director of hockey	ethel cowgill
director of basketball	gerry behan
director of baseball	margaret morrissey
director of quoitennis	mary mccann
director of dancing	virginia black
director of health	nan purtell
director of golf	mary judge
director of volley ball	ruth chadwick
director of hiking	marjorie fiske
director of bicycles	sylvia roper
director of et cetera sports	ruth penley

w. a. a. leaders

a1	carol vollmer	c1	harriet mayo
a2	margery powell	c2	barbara dobbyn
a3	marjorie cleary	c3	geraldine wardwell
b1	dorothy boyle	c4	jean whiting
b2	eleanor savaria	c5	janice kimball
b3	rita kelliher	d1	margaret kelley
b4	joanna gonet	d2	katherine nolan
b5	katherine lahey	d3	alice dunkerley
d4	dorothy fontaine		
d5	winifred taylor		



row 3—m. kelley, d. turner, r. penley, c. nolan, r. chadwick, g. wardwell, j. kimball, v. black, m. morrisey.
row 2—m. fiske, n. purtell, e. savaria, e. cowgill, a. sullivan, m. powell, w. taylor, s. fleish, m. bardini,
b. dobbyn, d. fontaine.
row 1—n. tuomala, a. wehter, s. knuttunen, miss decker, m. mcgloin, v. kundiz, a. roberti, v. chadwick, c. vollmer.

women's athletic association

. . . aiming to establish a permanent interest in physical recreation . . .
to carry over into adult life . . . to cooperate with the physical education
department . . . to inculcate ideals . . . of service . . . of stability . . .
of sportsmanship . . . and of scholarship . . .

. . . acknowledging the increasing importance of the modern dance . . .
and presenting hanya holm . . . renowned teacher . . . composer of
dances . . . and concert dancer . . . playing hostess to the guests from
hyannis teachers college . . .

. . . planning extensively for a high school play day . . . "but the best
laid plans of mice and men" . . . rain . . .

. . . sponsoring a new idea in playdays . . . with basketball as the high-
light . . . and with salem girl-athletes as guests . . .

. . . being social at conferences . . . of the women's athletic associations
at framingham . . . at the new england conference.



t. warren, w. nolan, a. ryan, b. bump, j. mcgovern, j. dinardo.

athletic association council

president
vice-president
secretary
treasurer

thomas l. warren
charles shaw
benjamin bump
james dinardo

. . . soccer players . . . winning many, losing few . . . swamping m. i. t.
. . . freshmen stars . . . fitchburg stars . . . losing ed and cush and vic
and mal . . .

. . . hoopers tall and short . . . tall on ability, short on luck . . . losing
. . . cheering . . . fighting . . . building . . . "giants" clem and augie
scoring the points . . . jayvees winning them all . . . not too tough a year
. . .

. . . baseball team much stronger . . . bigger squad . . . interclass
games a boon . . . track men go to town . . . local donaldbudges: shaw,
mcghee, murphy, and skahill, best in bridgewater history . . .

. . . a. a. dance, small but select . . . banquets . . . conference con-
flicts . . . great possibilities for '39.



row 3—*a. houlberg, h. paterson, a. lang, t. warren, p. farnham, e. bungarzone, j. savage, h. dunn, n. megas.*
row 2—*m. clouter, j. skahill, w. edgar, c. shaw, e. senesac, e. reilley, j. dzenowagis, a. dorocz.*
row 1—*w. nolan, j. dinardo, b. zubricki, e. skahill, m. cushman, j. chicetti, m. nash.*

soccer season

. . . despite a loss . . . to the ancient rival, fitchburg . . . enjoying a very satisfying season . . . under the leadership of coach fred meier . . . and captain ed skahill . . .

. . . off to a flying start . . . avenging three defeats of the previous season . . . namely a. i. c., new bedford, and m. i. t. . . .

. . . then two heart-breaking set-backs . . . at the hands of clark and fitchburg . . . but the team came back . . . to wind up the season . . . with a victory over durfee . . . probably the best game of the year . . . the best of luck to captain-elect jimmy dinardo and his team!

american international college	2—1
new bedford textile	3—1
massachusetts institute of technology	5—0
clark university	1—2
fitchburg teachers college	0—2
durfee textile	2—1

basketball

. . . main objective this season . . . the retaining of the coveted harrington trophy . . . as a result of three successive defeats . . . fitchburg loses all claim to the trophy . . . already allotted a permanent nest in our trophy case . . .

. . . the envious undefeated record . . . of the junior varsity squad . . . giving mr. meier plenty of promise . . . for successful varsity campaigns . . . during the next few years.

varsity games

hyannis	36—32
r. i. college of ed.	36—39
newport	32—24
providence	45—46
r. i. college of ed.	36—40
assumption	34—42
salem	36—26
newport	32—36
assumption	28—32
alumni	49—31
hyannis	39—27
salem	43—31
fitchburg	42—28
am. international	36—49

junior varsity games

hyannis j. v.	31—17
r. i. c. e. j. v.	28—16
salem j. v.	32—21
r. i. c. e. j. v.	33—26
independents	41—28
hyannis j. v.	33—32
salem j. v.	36—19
fitchburg j. v.	39—21



row 2—j. tobin, t. sparkes, g. gannon, c. daly, j. mcgovern, a. dorocz, j. selevonchik, j. dowd.
row 1—j. dinardo, j. donahue, m. cushman, j. augustine, h. woodward.



row 2—n. megas, w. luce, r. burnett.
row 1—j. mcgovern, w. edgar, l. flemming, j. skahill, a. dorocz.

newcomers to our teaching staff



. . . marie p. mahoney . . . retiring and youthful . . . graduate of clark university . . . coming from the history department of a worcester high school . . . to take over elective history courses . . . charm beneath the reserve . . .

. . . dr. clement c. maxwell . . . scholarly and human . . . visiting for this year . . . we hope he decides to remain . . . his english and history courses . . . promising to end relaxation in classes for all time . . . lectures stocked with material . . . and barbed with wit.

shake hands with spring!

with half a million floating appleblossoms,
and the pale wings of the maple,
with a gold-eyed violet
and a liquid finger of moon-silver
in a snow-born brook.

—margaret meade

commencement exercises

baccalaureate	june week	june 5
	dr. zenos e. scott	
promenade		june 6
	parker house	
	jean val jean's orchestra	
	general chairman	florence kuchmeister
	hospitality	rita murphy
	hall	benjamin bump
	orchestra	justin mccarthy
	favors	moira kispert
	programmes	doris dennison
class picnic		june 8
	general chairman	francis jagello
faculty reception		june 9
class day		june 10
	general chairman	kathleen kelly
	theme — a philosophy of contemporary education	
graduation		june 10
ivy march		june 10

significance of the ivy march

- trumpet call . . . representing the call to duty . . . for seniors . . .
- oak boughs . . . held by underclassmen . . . symbolizing the everlasting protection of the college . . .
- ivy . . . which is planted . . . and also carried by each graduate . . . symbolizes the spirit of comradeship and good-fellowship . . .
- the daisy-chain . . . carried by the junior women . . . representing a guard of honor for the seniors . . .
- the alma mater . . . sung by the seniors . . . at the conclusion of the march . . . signifies the continual renewal of their loyalty for the college . . .

the lilies
are snow-white spiders
with long legs
a-gangle in the wind.

—margaret meade

impressions of the college

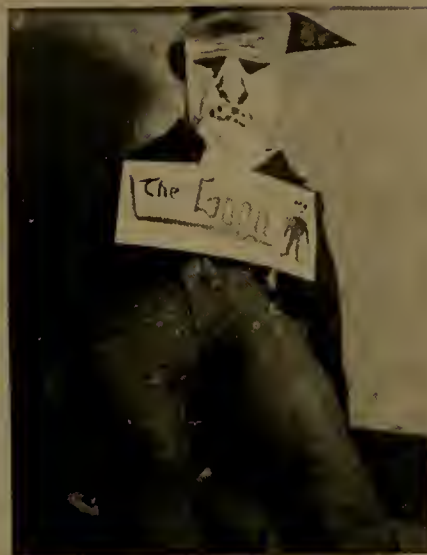
fall

fall effects two feelings,
gain with the coming of new energy
and loss with the going of former gains.
now the once-green of the trees has fallen,
the grass retreats from its plotted edges,
but youth runs lithely over the dying grass
and youth scuffs through the burial mounds of leaves.
down in the garden the pool is a mirror
not of blue sky, but of shrubs brown in crisp death.
fall effects life and death.



winter

winter is here . . . so awake
to the clang of heat-forced pipes.
walk out on snow that swerves
like cornstarch underfoot.
along the sidewalks banked
feet high with diamond chips.
look out through the windows
where black trees are etched on white.
and when night comes, watch the moon
that is round and warm orange
on the horizon
contract into frozen white
high in the cold blue.



spring

spring comes to bridgewater
on the day you wake early to lean out the window
to crane for that bubbling bird,
on the day you lift your burrowing chin
from the fur collar of winter
into the velvet ruff of spring air.
certainly it is spring —
when shoes grayed by winter's slush gleam unseasonably
like driven snow in sunlight.
and when you feel the golden preciousness
of wall-sheltered dandelions,
you rejoice in spring at bridgewater.



summer

just as those microscopic red fuzzies
swarm on the stone arms of the building steps,
so students pour out of dark shelters to
take over the greenness of the campus,
thankful that grass is the color it is,
not pink . . . or blue . . . or red . . . just verdant green.
they let the sun's rays hit on their eye-balls
until they go in, blind in the cool black
of cavern-like corridors with red signs,
blinking at each end.
perhaps at night a thunder storm rains down.
then in tillinghast hall hands run up
bared arms that sleeve-less dresses don't keep warm.
cocky white flannels and ducks wilt at the
freshness of the air.
a half-hour later the stars reflected
in side-walk pools wink at the spike heel that
disturbed their stillness.



reflections from the campus pond

. . . four years are about to close . . . the end of a distinct period in our lives is near . . . so why may we not spend our final week in reminiscing? . . . before speakers exhort us "youth of the new era" to "look ahead to a brilliant future" . . .

. . . the time seems a particularly apt one for the purpose of determining how much we owe to bridgewater . . . to appreciate her in the one remaining week, without waiting for time to mellow us . . . for we all are imbued with the lack of gratitude which too easily attained benefits bring . . . to gain a slight measure of appreciation . . . let us imagine a balance . . . into one pan we place the advantages which we as individuals have gained from the college . . . into the other the things we have contributed to bridgewater to build a better college . . .

. . . on the personal side, we see . . . if we have applied ourselves at all . . . a widely diverse background of knowledge and interests . . . allowing us to enjoy more fully the present and the future . . . we see a creditable fund of definite information in our chosen subjects, coupled with a workable philosophy of application . . . aimed to remove the parrot-like qualities from learning . . . added to this is a feeling of having something definite to offer . . . being prepared for a profession . . . as so many of our contemporaries are not . . .

. . . if we have ever had the potentialities for becoming men and women . . . they have been fostered here . . . for let us remember that freedom and independence are very relative quantities . . . which are never quite attained . . . and thus let us realize that the very limitations which surround us have frequently been a better preparation for living than great freedom might have been . . .

. . . these four years have been happy ones . . . the security from major worries . . . the facilities for enjoyment . . . the general atmosphere . . . are intangibles upon which you cannot set a value . . . what institution could possibly offer more opportunities for ridding us of self-consciousness and lack of poise . . . which are such drawbacks in meeting the multivarious situations of modern life? . . .

. . . all these . . . and more . . . were offered . . . can we blame the college if we failed to take advantage of them? . . .

. . . high on the other side hangs the pan with our personal contributions to the institution . . . could we mention the tuition paid? . . . the answer is obvious . . .

. . . the college has progressed since we entered . . . but then, it has progressed in the past . . . is progressing in the present . . . and will no doubt continue to progress in the future without our aid . . . tho we have shown cooperation, to some extent, with the authorities in achieving advances . . . most of us have appreciated the advantage of added courses and added study loads . . . realizing that the ultimate benefits would be ours . . . yet we certainly did not cooperate to the extent warranted by the advances . . . the encouragement given to the already overworked faculty has been negligible . . . the crying-down of the college has not decreased . . . what feasible plans of improvement have we submitted? . . .

. . . how have we conducted ourselves off-campus to increase the prestige of the college? . . .

. . . favorably . . . we hope now . . . but we are reminded that there was much room for improvement . . .

. . . all in all . . . we do not seem to have reached a very close equilibrium . . . so let us humbly leave . . . with a hope that future classes may more nearly hit the mark we missed . . . realizing the great debt of the student . . . ambitious to fulfill it.

afterthought

. . . and yet this not an ending . . .
nor even a beginning . . . but rather
a filling in of one side of the pattern
. . . the pointing up of one ray of the
star . . . we move on to the next
. . .

autographs

compliments of

c. k. grouse company

north attleboro

massachusetts

10
7 15



makers of

bridgewater state teachers college rings

and manufacturers of

club and fraternity pins

we wish to extend sincere compliments to the class of '38—and express the wish that the future of each member to be bright with success and happiness.

92
H. 15

van dale

class photographer

distinctive portraits
oil paintings
etchings — pastels
home, studio, commercial
illustrative and school
photography.

255 main street

pawtucket

rhode island

best wishes *from your alumni*

today you are a graduate of bridgewater.
today we wish you joy and success.
today you become an alumnus of bridgewater.
we welcome you! we welcome you! !

doings

in june 1939 we have a regular biennial meeting at bridgewater
it will be your first grand meeting with us
make it at all costs

your first alumni meeting is a great event in your life

in june 1940 we have a centennial meeting at bridgewater

our centennial committee is seeking a fund to celebrate this great
occasion in a fitting way and make a gift to our alma mater in keeping
with what she has done for us

now you are one of us
we count on your work and your loyalty

bridgewater alumni association

1
to the graduating class
congratulations and best wishes for a successful future
central square pharmacy the rexall store
bridgewater, massachusetts

2
dorr's print shop
printers

2
brady's diner
wishes good luck and success to the
graduating class of 1938

2
compliments of
bart casey

2
compliments of
albert f. hunt, m. d.

bridgewater

massachusetts

4
the field company
290 montello street brockton, mass.
simpson spring beverages
confectionery at wholesale

2
compliments of
snow's
friendly store



2
isabel's
beauty salon
eugene and realistic permanents
and
all branches of beauty work
central square
bridgewater massachusetts
telephone 2281

costumes
for
plays — operas — carnivals — pageants — masquerades

hayden costume company

786 washington street

boston, mass.

hancock 4346

j. m. vine, prop.

the fickett teachers agency

eight beacon street, boston

for over fifty years this agency has been rendering professional, effective service to bridgewater graduates. we shall be glad to represent you and to give to you our careful, personal attention.



edward w. fickett, managers

bertha d. chellis

start now toward having
your electric kitchen

ranges, refrigerators and water heaters are designed to supplement each other in the modern kitchen scheme. each contributes its share and helps the others render the fullest convenience and service.

brockton edison company

compliments of the

h. h. dudley company, inc.

druggists

2 central square

bridgewater, mass.

daiker nurseries
flower shop

2 corsages — hair ornaments —
cut flowers of all kinds.

we wire flowers anytime, anywhere.

977 summer street — bridgewater
tel. 937

eastern grain
company

bridgewater massachusetts 2

distributors of wirthmore feeds

use wirthmore feeds for best results

wirthmore
poultry
feeds

wirthmore
dairy and stock
feeds

compliments of

a friend



advertisers engraving company
incorporated



artists

engravers



126 dorrance street
providence, rhode island
telephone gaspee 7095

the grace m. abbott teachers' agency

grace m. abbott, manager

120 boylston street

boston

member national association teachers' agencies

records show that there is
no safer place for your savings
than in a mutual savings bank

bridgewater savings bank

deposits go on interest the first day of each month

bridgewater

massachusetts

compliments of

ruth and kenneth wakefield

auburn street

whitman, mass.

harry brown's sport shop

86 main street

second floor

brockton, mass.

sporting goods — games — toys

established 1930

phone 7653

bolton-smart company, inc.

purveyors of choice

beef, lamb, veal, pork, poultry, fish, butter, cheese, eggs, relishes

19-25 south market street

41 fish pier

boston, massachusetts

plymouth rock ice cream

tested and approved by the good

housekeeping institute

telephone

rockland 1620

greeting cards — stationery

at the

bridge and gift shop

m. a. condon

prompt service

telephone 71-2—71-3

w. h. luddy & son

busses and limousines

trucking and furniture moving

71 north central street

east bridgewater, massachusetts



the mark of craftsmanship



congratulations to
the editor and the staff
of the 1938 alpha



reynolds printing

new bedford, massachusetts

would also appreciate the pleasure of serving you.
