

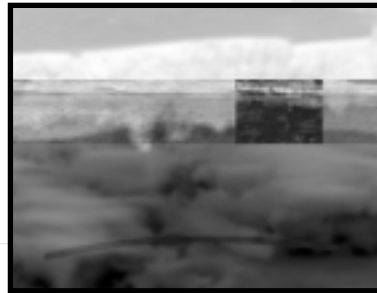
Jun-2002

Table of Contents, Vol. 21, No. 1, June 2002

Recommended Citation

(2002). Table of Contents, Vol. 21, No. 1, June 2002. *Bridgewater Review*, 21(1), 1.
Available at: http://vc.bridgew.edu/br_rev/vol21/iss1/2

Bridgewater Review



ON THE COVER

Gary Stanton's *Low Tide* is a composite digital image created from three photographs taken during July 2001 in Bennington, Vermont.

INSIDE FRONT AND BACK COVERS

- Photographs**
Marc Raila
-
- 2 **Working Together, Building on Our Accomplishments**
A message from Bridgewater's new President
Dana Mohler-Faria
-
- 4 **Chasing Solar Eclipses**
Martina Arndt
-
- 8 **International Artist Exchanges in Former Yugoslavia**
Margaret Tittlemore
-
- 10 **Princes (and Princesses) of Rhode Island**
Suzanne Ramczyk
-
- 13 **Cultural Commentary: Eating High off the Hog**
Garland Kimmer
-
- 15 **Becoming Ndebele**
Brenda Molife
-
- 21 **Editor's Notebook: Our E-Mails, Ourselves**
Barbara Apstein
-
- 24 **The Deadly Trypanosome**
Patricia E. Mancini
-
- 28 **Misguided Censorship (Book Reviews)**
Stephen Chbosky, *The Perks of being a Wallflower*
Melba Pattilo Beals, *Warriors Don't Cry*
Marjorie Heins, *Not in Front of the Children: 'Indecency,' Censorship and the Innocence of Youth*
Charles F. Angell
-
- 31 **Poetry Review**
Faye George, *A Wound on Stone*
Phil Tabakow

EDITOR

Barbara Apstein
English

ASSOCIATE EDITORS

William Levin
Sociology

Lee Torda
English

DESIGN

Donna Stanton
Art

ADVISORY BOARD

Charles Angell
English

Ratna Chandrasekhar
Librarian

Paul Dubois
Physical Education

Stephen Levine
Theatre Arts

Mercedes Nuñez
Art

Thomas Moore
Mathematics
and Computer Science

Thomas Turner
History

The Bridgewater Review is published twice a year by the faculty of Bridgewater State College. Opinions expressed herein are those of the authors and do not necessarily reflect the policies of the Bridgewater Review or Bridgewater State College. Letters to the Editor should be sent to: Bridgewater Review, c/o Editor, Department of English, Bridgewater State College, Bridgewater MA 02325

Articles may be reprinted with permission of the Editor © 2002, Bridgewater State College ISBN 0892-7634