



2005

The Taunton River's Last Major Tributary: Chemical Analysis of a Freshwater Dam System in the Upper Assonet River

Recommended Citation

Bridgewater-Raynham Regional High School, Bridgewater, Massachusetts (2005). *The Taunton River's Last Major Tributary: Chemical Analysis of a Freshwater Dam System in the Upper Assonet River*. In Watershed Access Lab Projects. Project 38.
Available at: http://vc.bridgew.edu/wal_projects/38

This item is available as part of Virtual Commons, the open-access institutional repository of Bridgewater State University, Bridgewater, Massachusetts.

**The Bridgewater-Raynham
Watershed Team (BRWT)**

Presents:

The Taunton River's Last Major Tributary

**Chemical Analysis of Water in a
Freshwater Dam System in the Upper
Assonet River**

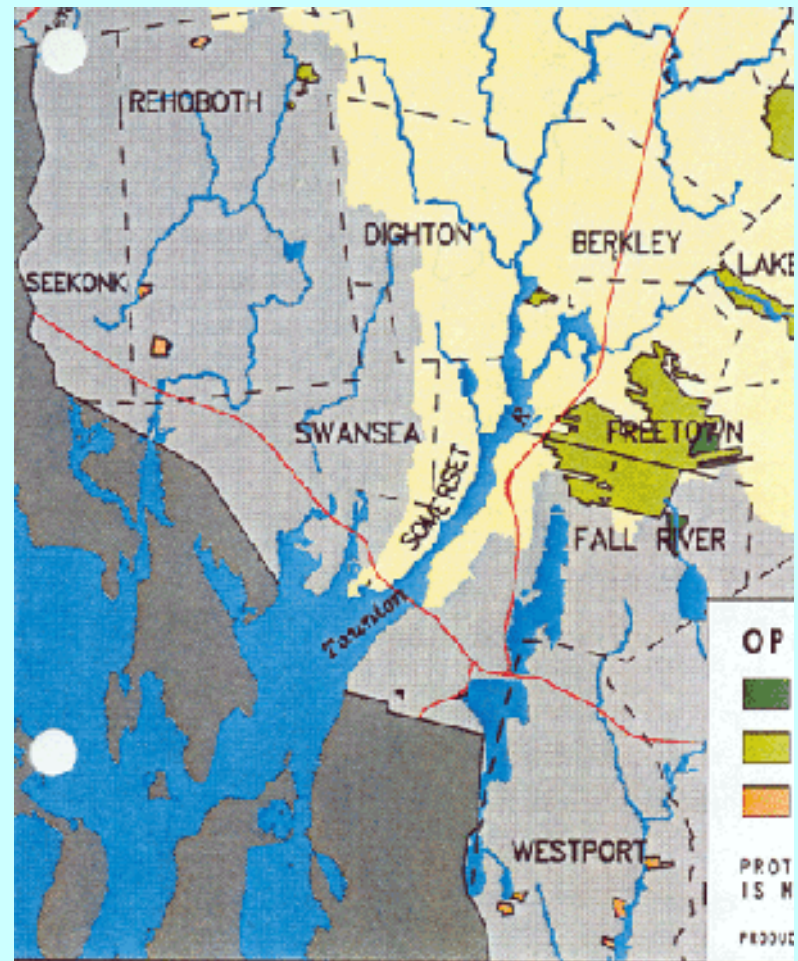
Fall 2005

Purpose of the Study

- To study how a dam system in the upper Assonet River effects the chemical and nutrient levels downstream.
- To prepare the Science Olympiad Team for the Freshwater Ecology section of their December 22nd meet at Bridgewater Raynham regional High School.
- Figures will help students complete the eagle scout communication merit badge.
- To increase stewardship and knowledge of the Taunton River Watershed (TRW) across Southeastern Massachusetts.

The Taunton Watershed Basin (southern portion pictured)

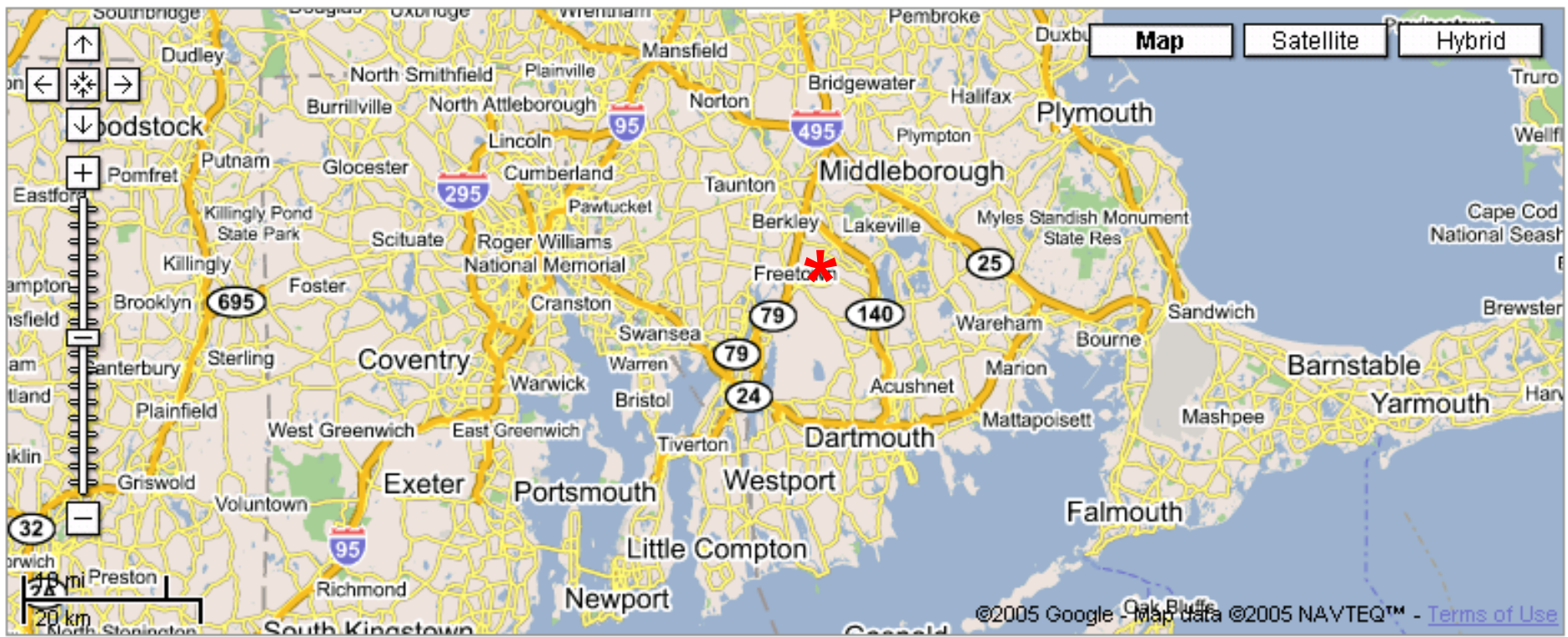
- Basin for 38 towns.
- 221 lakes and ponds
- 173 canoeable river miles
- Home to the 16,800 acre Hocomock Swamp
- 29 species of fish (brook trout included)
- 114 species of birds
- Source:
<http://www.trwaonline.org/>



Location of Study

Local

 [Print](#)  [Email](#)  [Link to this page](#)



[Help](#)



[Web](#) [Images](#) [Groups](#) [News](#) [Froogle](#) **Local^{New!}** [more >>](#)

assonet, ma

Search

Search the map
[Find businesses](#)
[Get directions](#)

e.g., "hotels near lax" or "10 market st, san francisco"

Local

[Print](#) [Email](#) [Link to this page](#)



©2005 Google - Map data ©2005 NAVTEQ™ - [Terms of Use](#)



Web Images Groups News Froogle Local^{New!} more »

assonet, ma

Search

Search the map Find businesses Get directions

e.g., "hotels near lax" or "10 market st, san francisco"

Local

Print Email Link to this page

Map Satellite Hybrid



Weather and Site Conditions

- Cloudy with some precipitation.
- Cool Air Temperature (45°F)
- Deciduous Trees dominate the landscape
- Dark Water (leaves release dark acids)
- Relatively Shallow Pond

Sample Locations

Local

 [Print](#)  [Email](#)  [Link to this page](#)



Pond and Dam System



Spillway

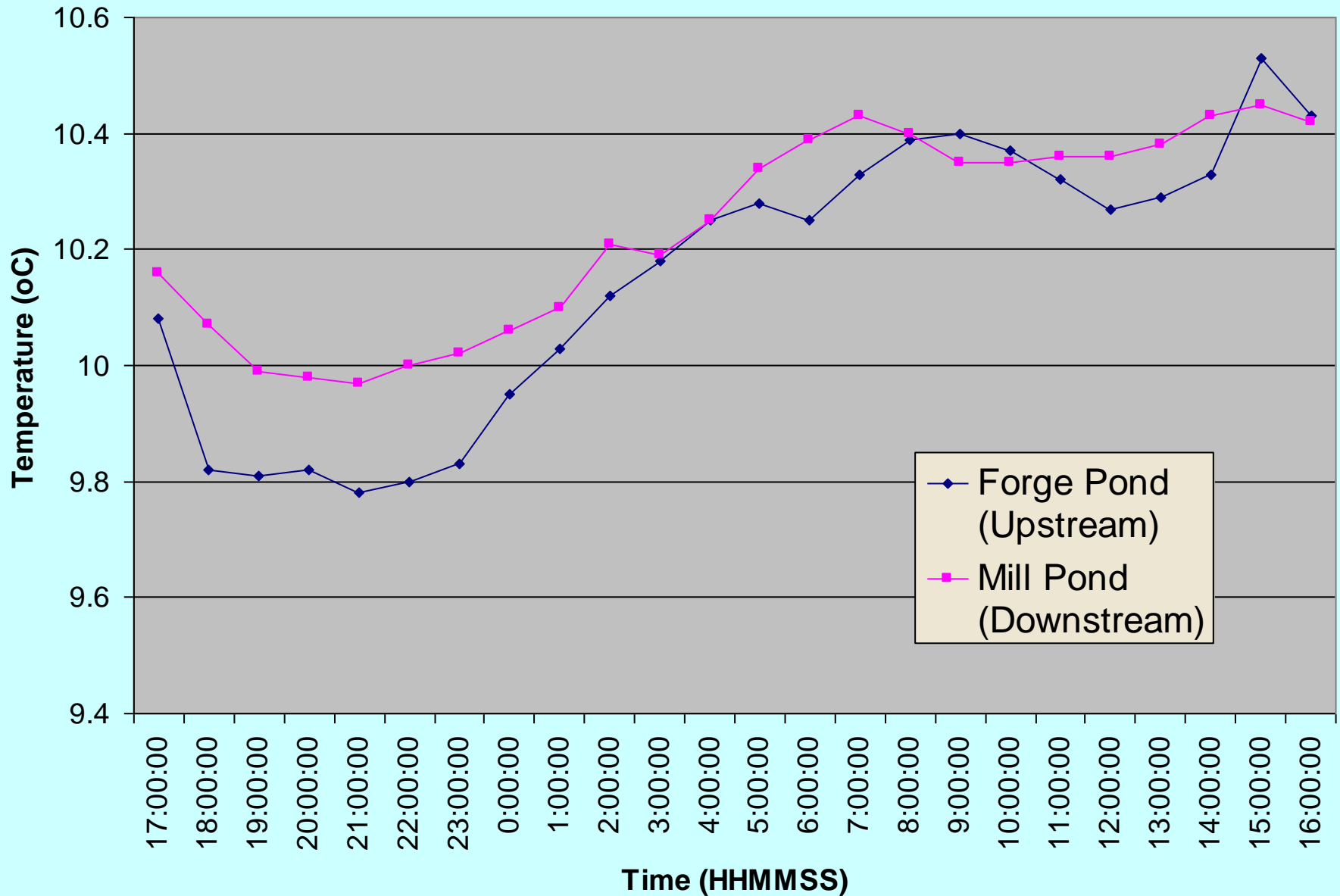


Hydrolab Data

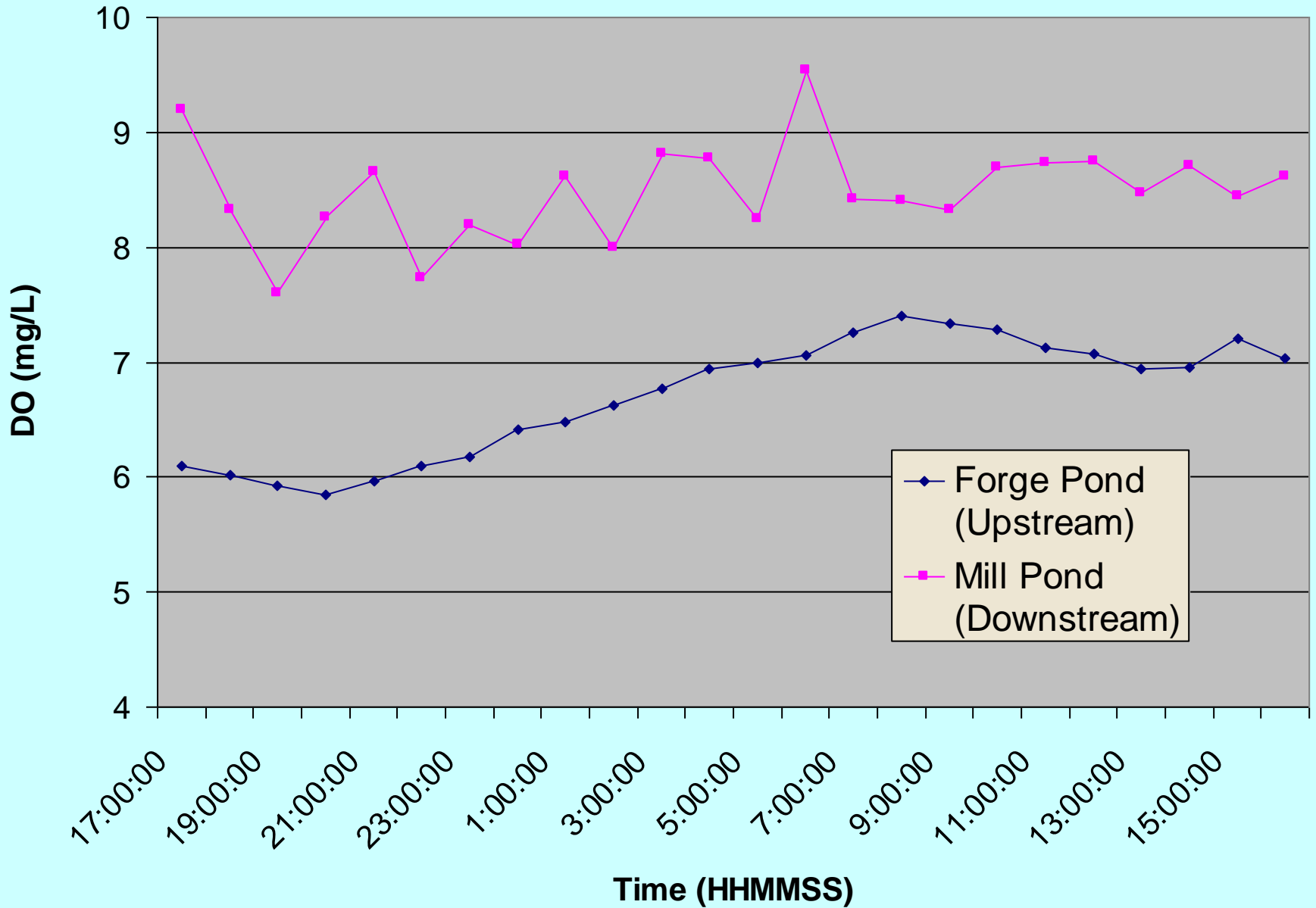
- Probes for hourly readings.
- Graphical Analysis of Temperature, pH, Dissolved Oxygen (DO), and Specific Conductivity.



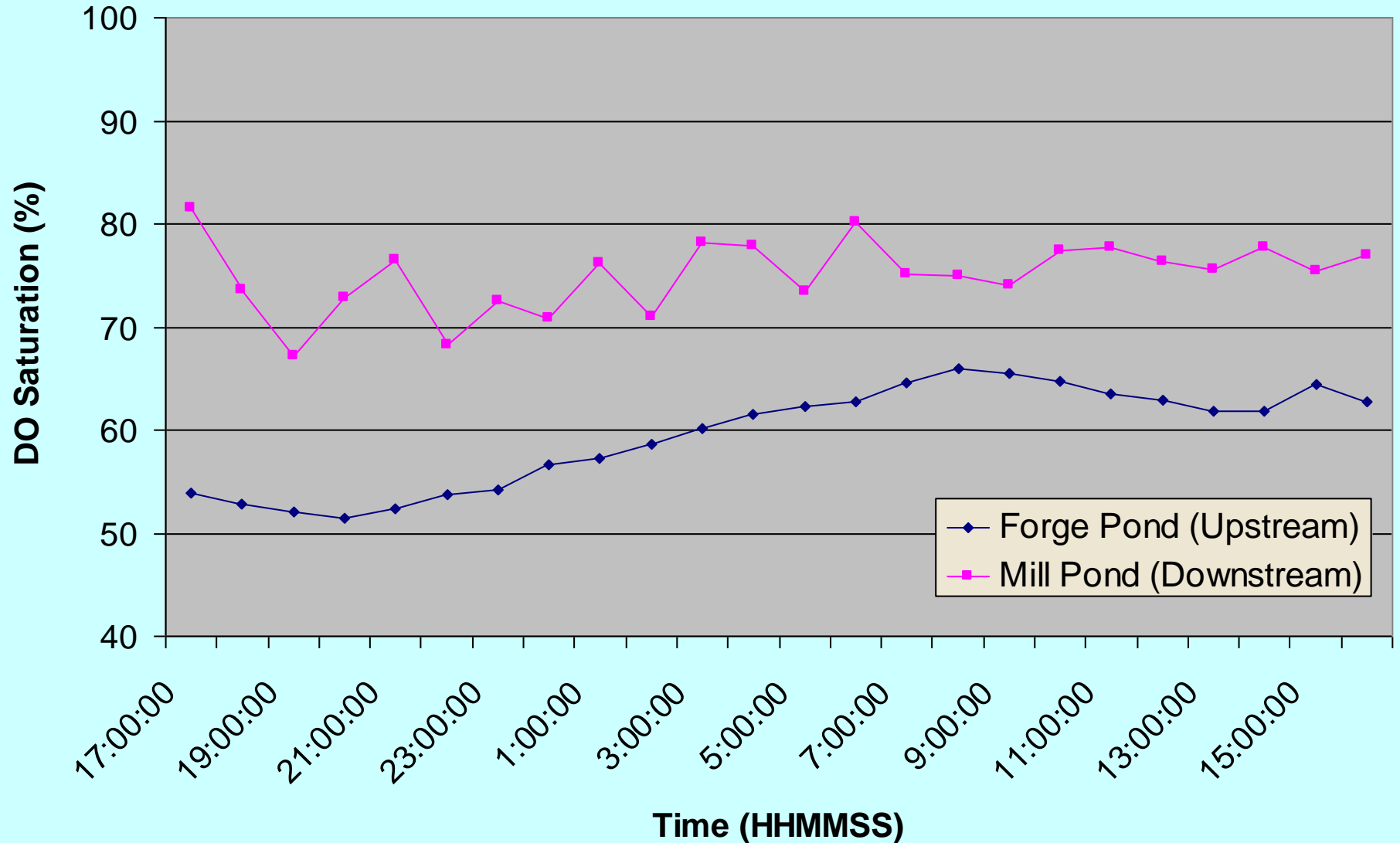
Temperature vs. Time



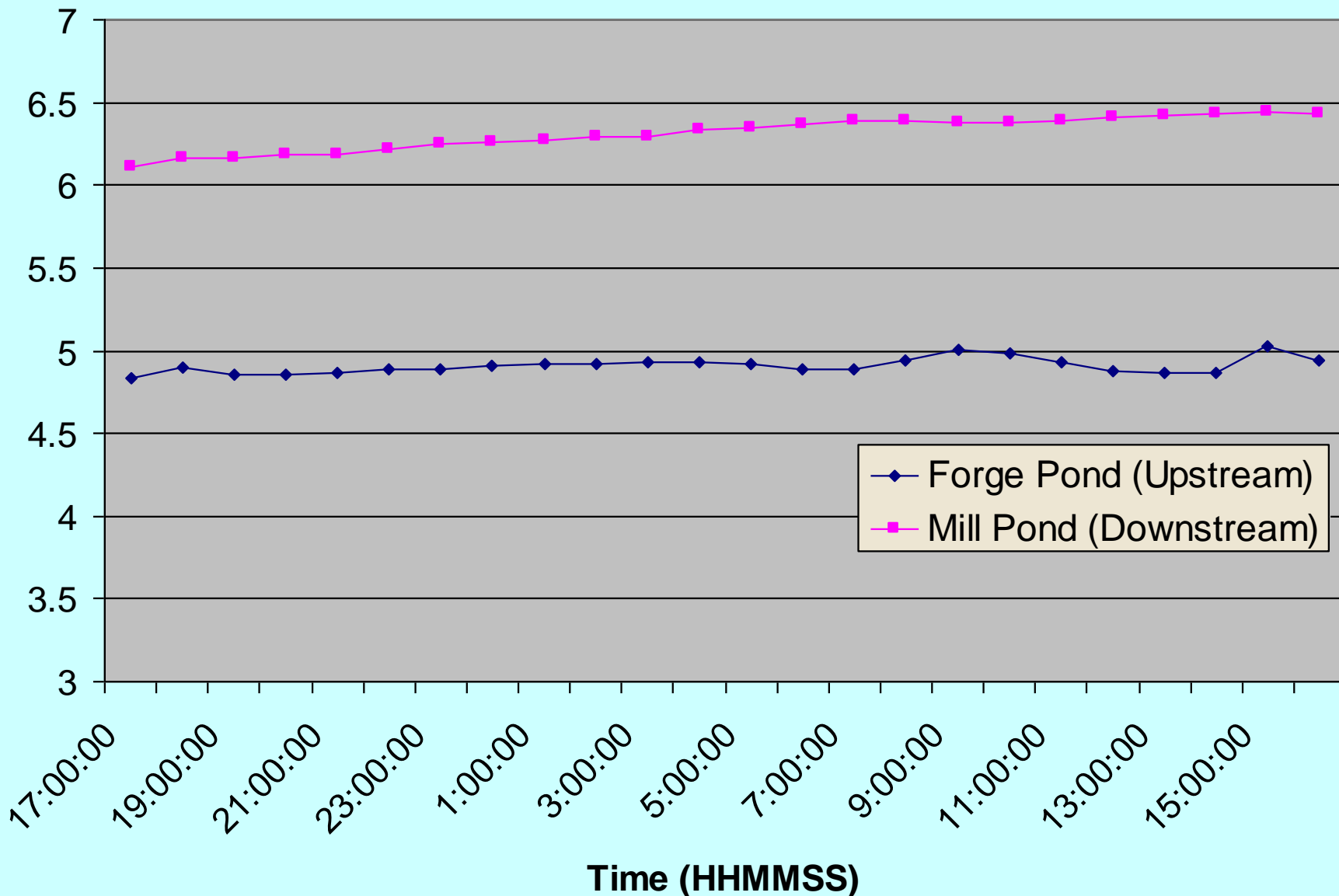
DO vs. Time



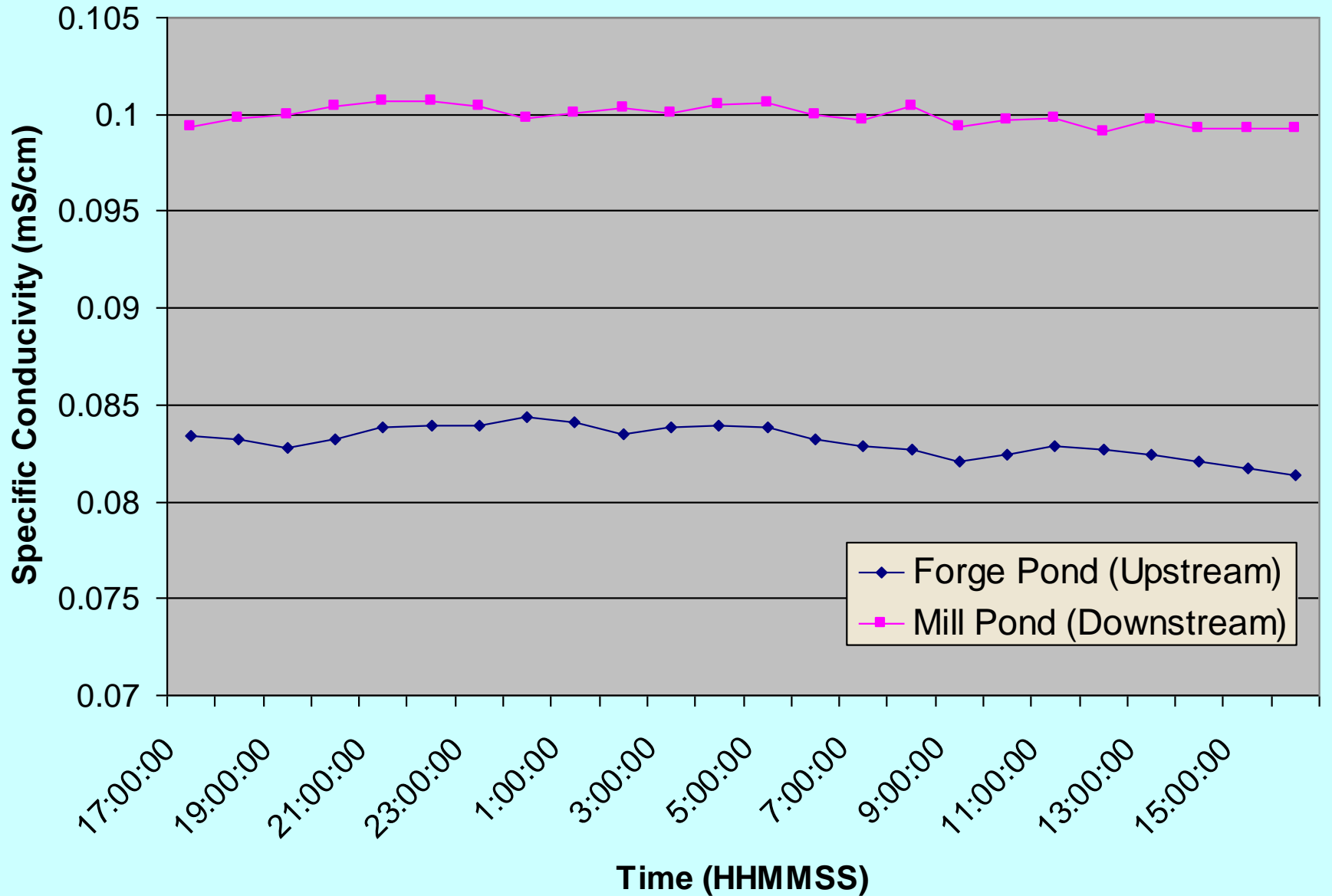
DO Saturation (%)



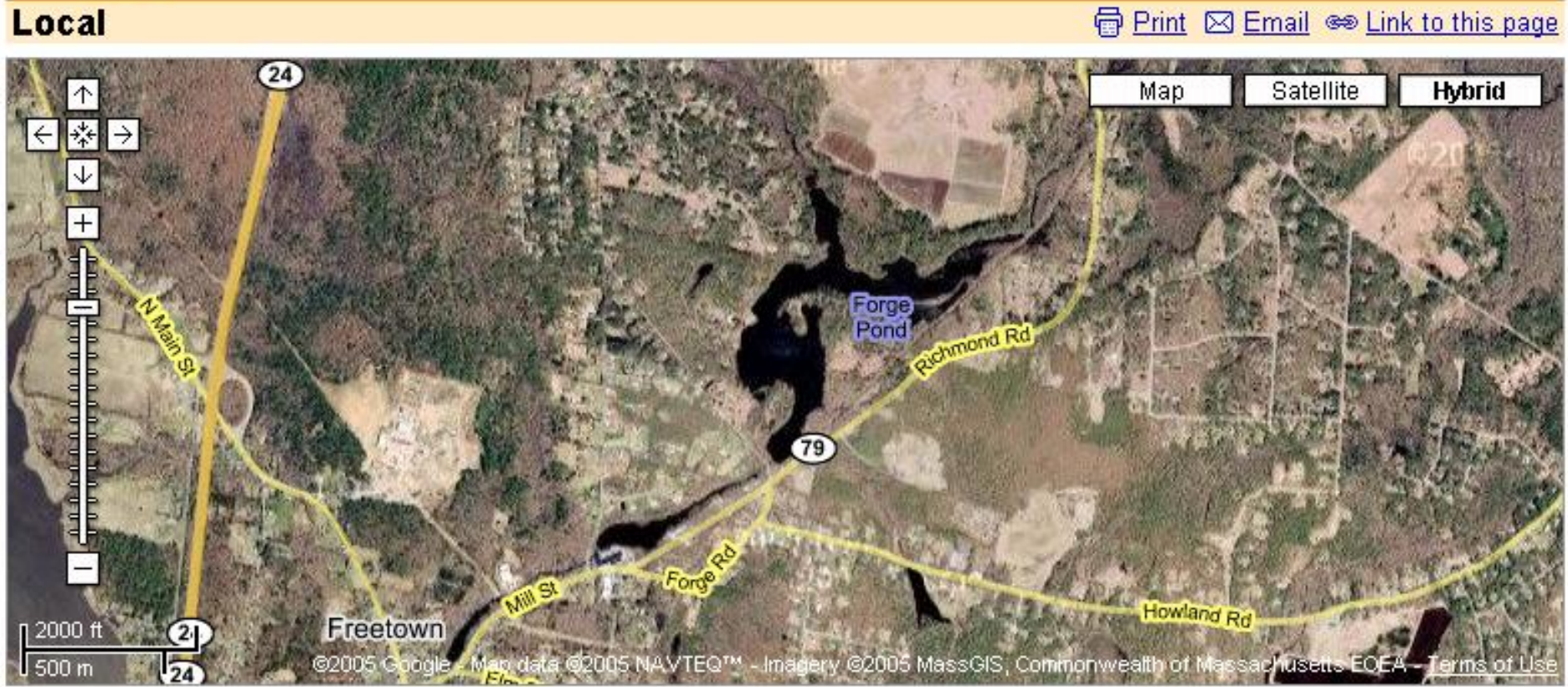
pH vs. Time



Specific Conductivity (mS/cm)



More Dissolved Substances in Mill Pond???



Sigma Data



- Hourly water samples collected in bottles.
- Analyzed at the Bridgewater State College Watershed Access Lab by Kim McCoy.
- Larger amounts of phosphate and nitrate downstream.
- Rainfall and storm events effect nutrient availability.

Discussion and Conclusions

- Dam systems can effect water temperature.
- The dams changed the habitat by created pools and larger pond surface area.
- DO levels were higher after the dam.
- DO levels were higher in slightly warmer water.
- DO effects the water pH by pushing other dissolved gasses out.
- Specific conductivity is effect by narrow stream beds.

Future Studies

- Include data from the third dam.
- Historically, the Assonet River was known for its trout. Then the dams were built.
- Check seasonal variation (vegetation & evaporation)
- Measure flow, discharge, and nutrient loading from the spillway.
- Measure DO in the turbulent spillway.

Thank you to...

- Dr. Curry for his insight during the site visit.
- Kim McCoy for her help with the equipment and data.

Bridgewater-Raynham Watershed Team

- Mark Madonna
- Ray Seekell
- Ann-Marie Illsey
- Sehrish Abid
- Laurie Soderbom
- Kara Son
- Mr. Levesque